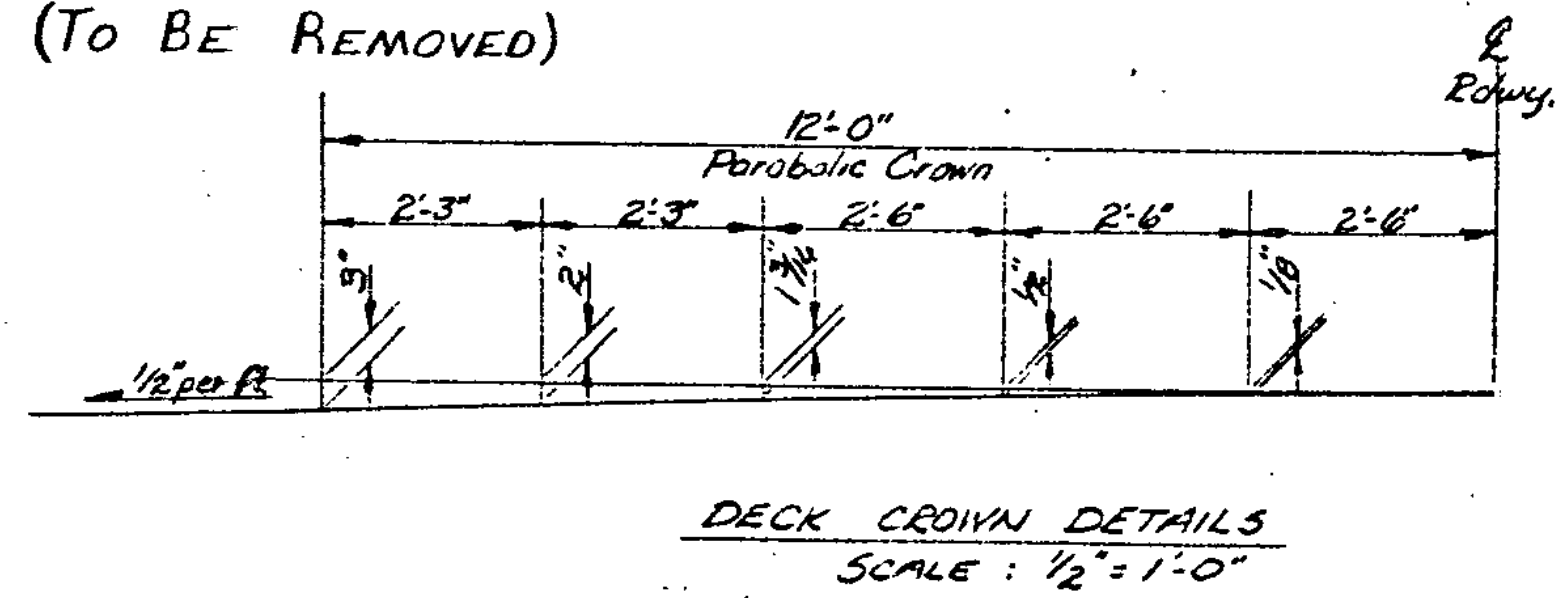
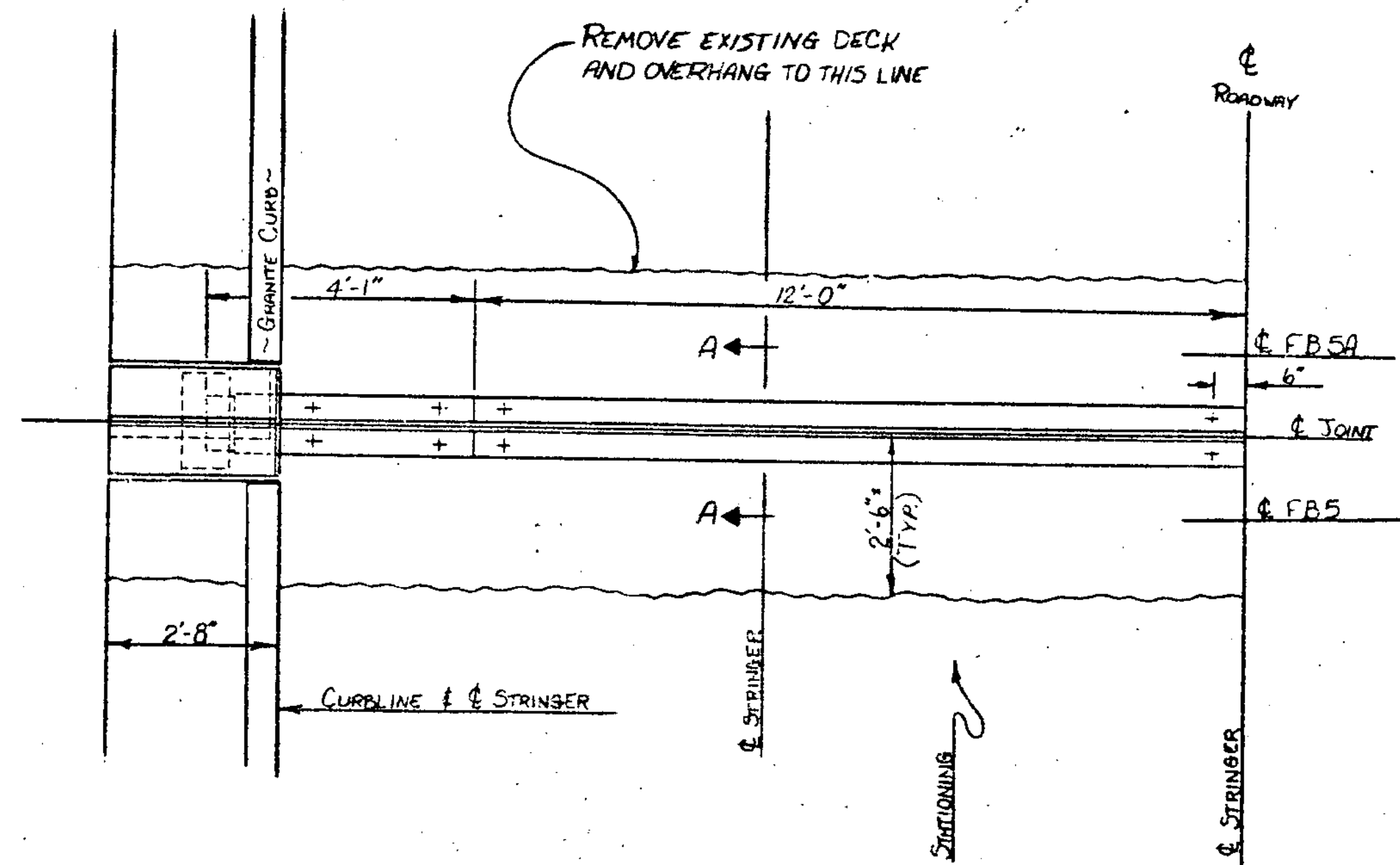


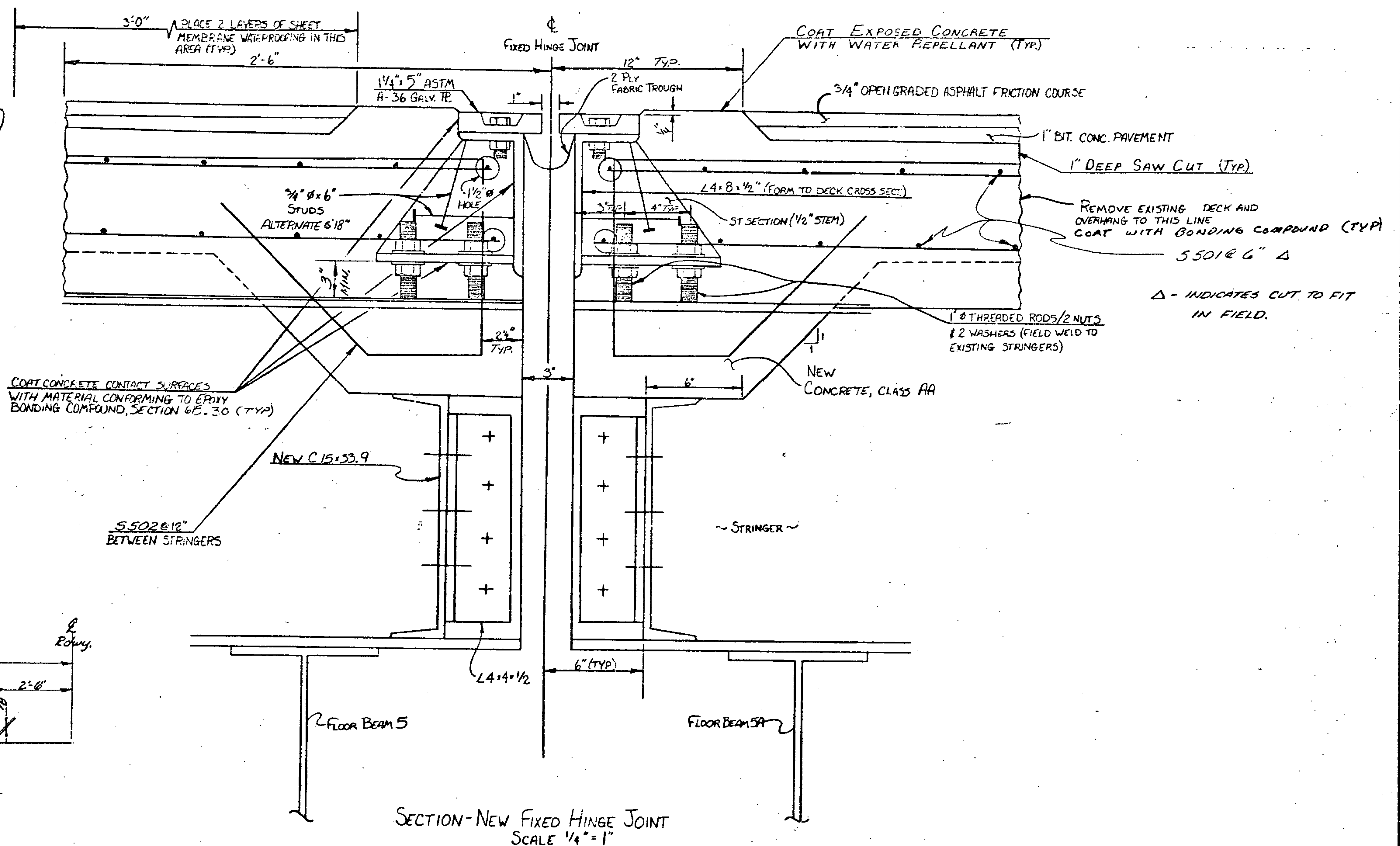
SECTION-EXISTING FIXED HINGE JOINT
SCALE 1/4" = 1"
(TO BE REMOVED)



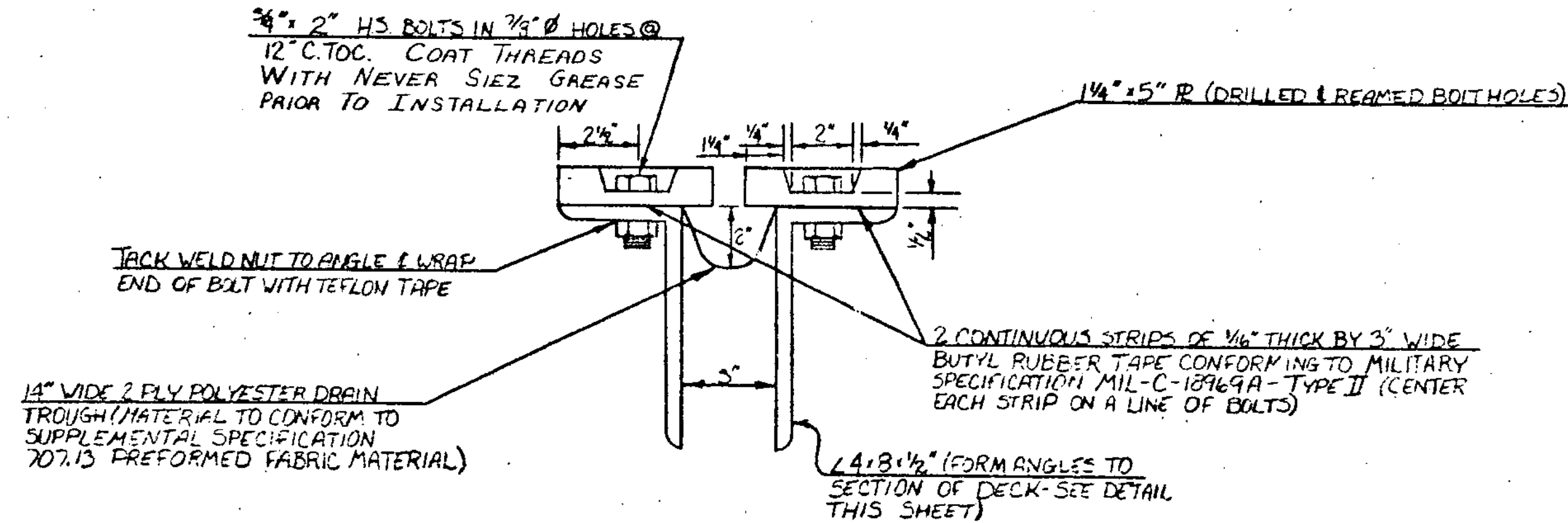
DECK CROWN DETAILS
SCALE: 1/2" = 1'-0"



PLAN-NEW FIXED HINGE JOINT
SCALE 1/2" = 1'-0"



SECTION-NEW FIXED HINGE JOINT
SCALE 1/4" = 1"



SECTION A-A
SCALE 1/4" = 1"

STATE OF VERMONT AGENCY OF TRANSPORTATION	
Town Of HARTFORD	Bridge No. 44 N&S
Highway No. I 91	Log Sta. Surv. Sta.
FIXED HINGE JOINT DETAILS	
I 91 OVER THE WHITE RIVER AND U.S. 4	
Designed By A. ELWOOD	Drawn By K. LYONS
Checked By AWE Date 8-84	Bridge Design Supervisor R.S. HAUPT Date 8-84
PROJECT HARTFORD	PROJECT NO. TR91-2(1)
I.G.C. Info.	
Bridge Sheet No.	Sheet 23 of 30

BRIDGE 62165