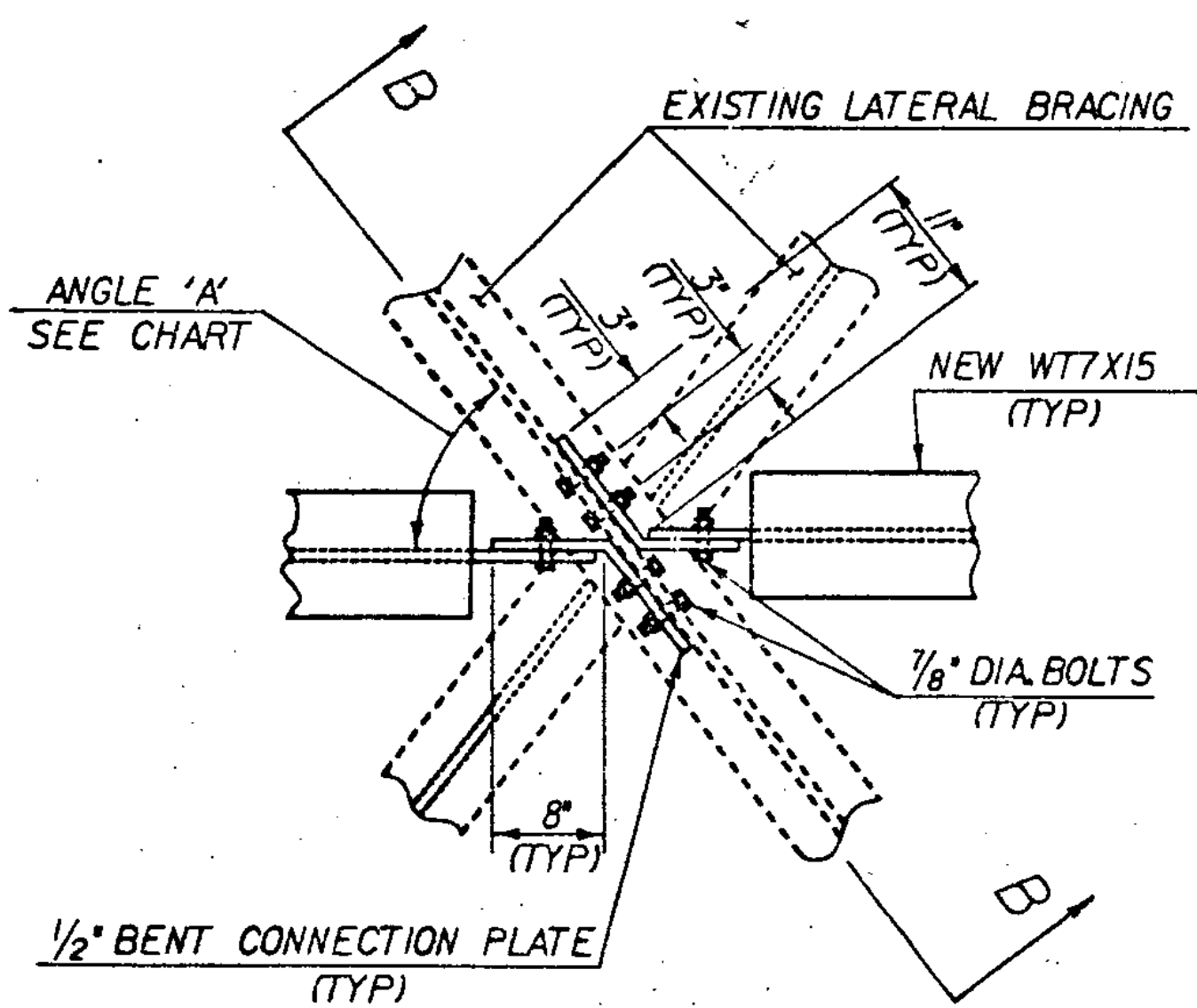
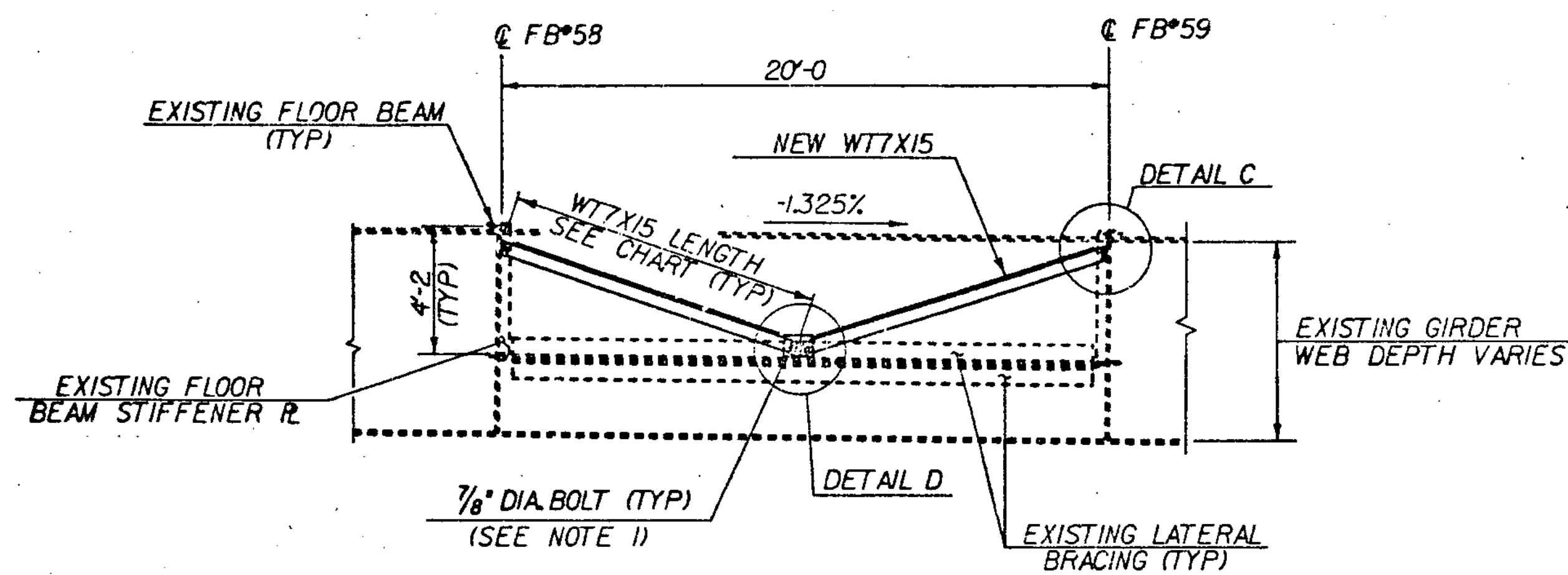


PLAN
SCALE 1/4"=1'-0"

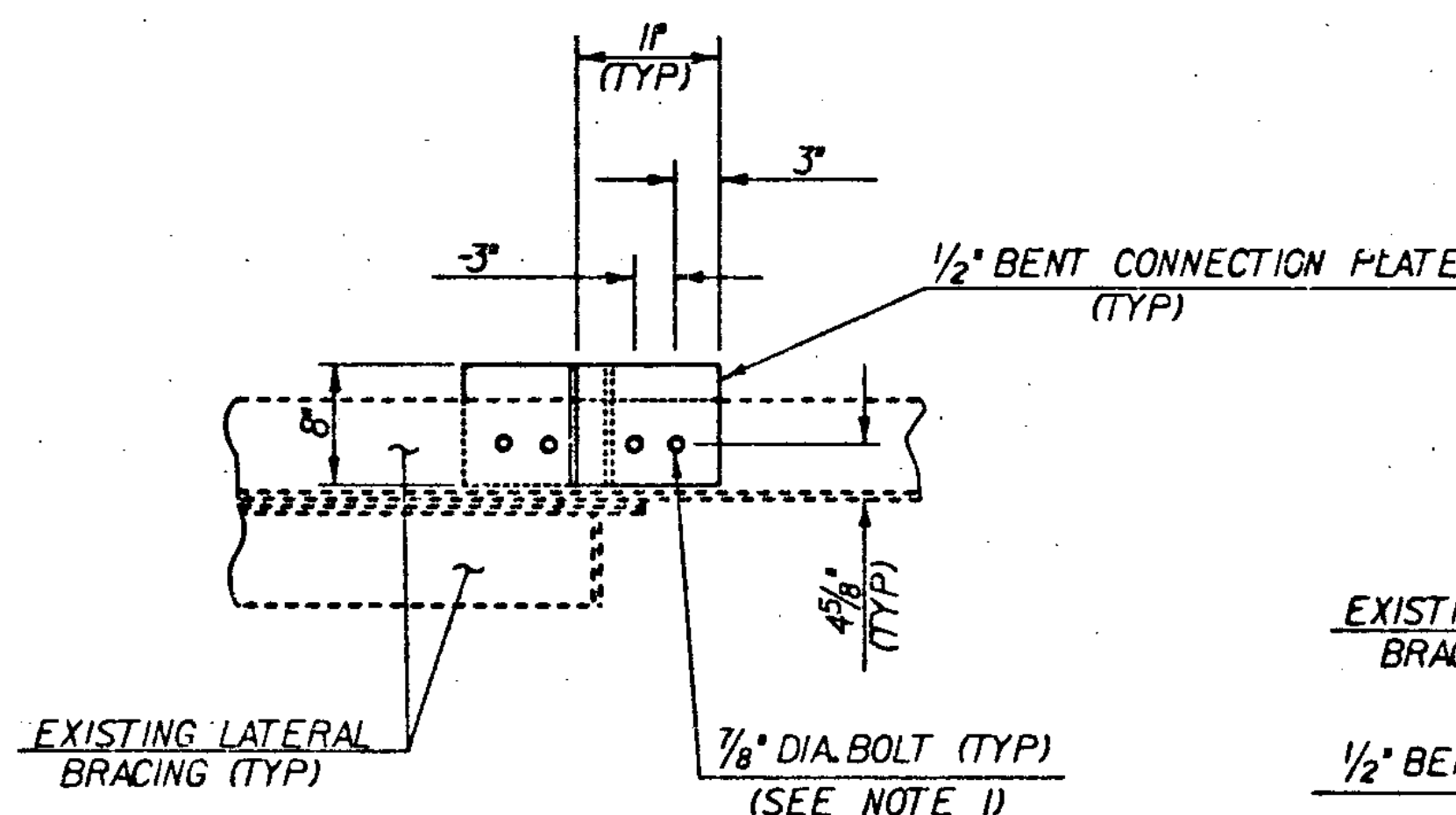
NOTE: PLAN OF BAY FROM FLOOR BEAM #58 TO #59 SHOWN, BAYS FROM FLOOR BEAM #10 TO #4 AND #5A TO #11 AND #55 TO #60, ARE SIMILAR.



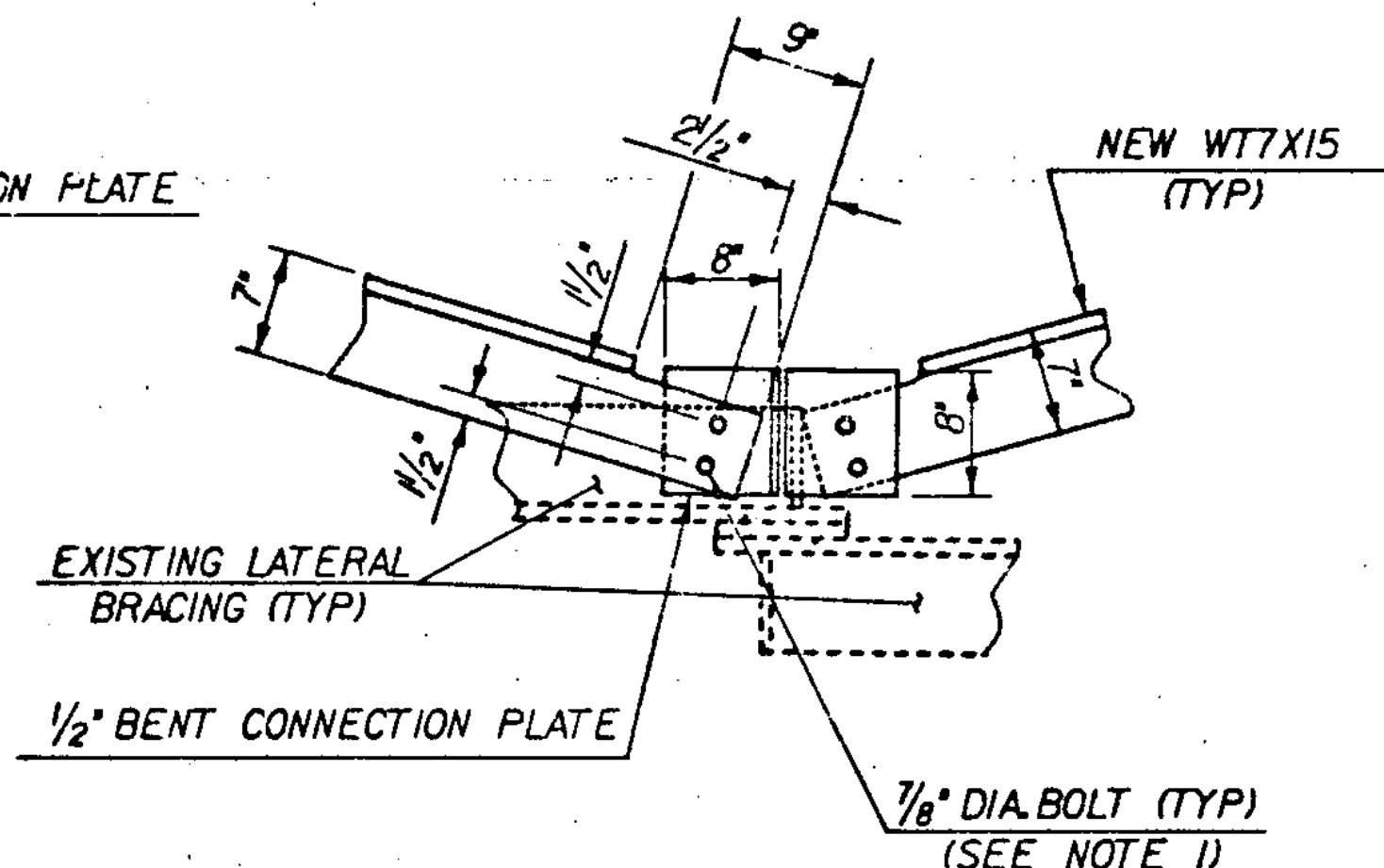
DETAIL A
SCALE 1"=1'-0"



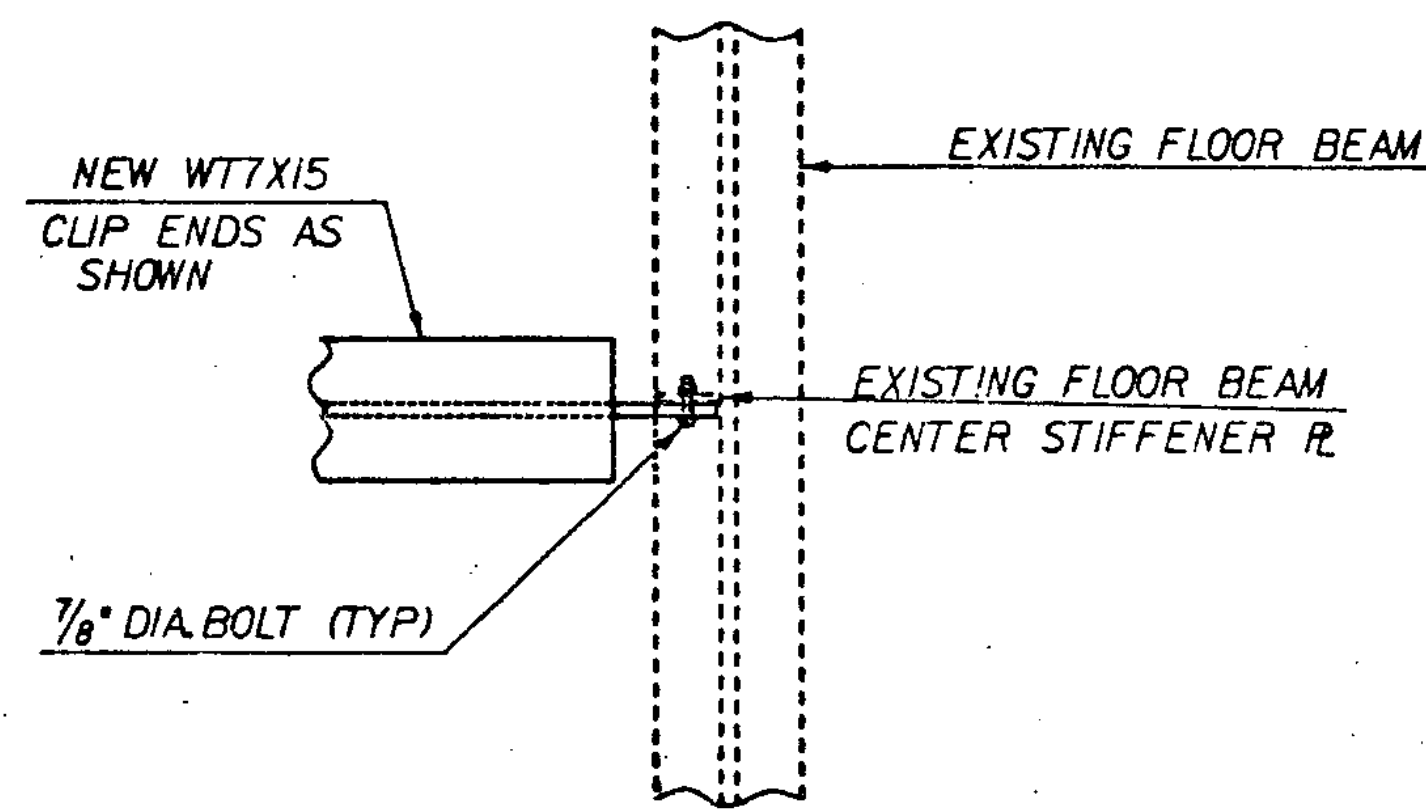
SECTION A - A
SCALE 1/4"=1'-0"



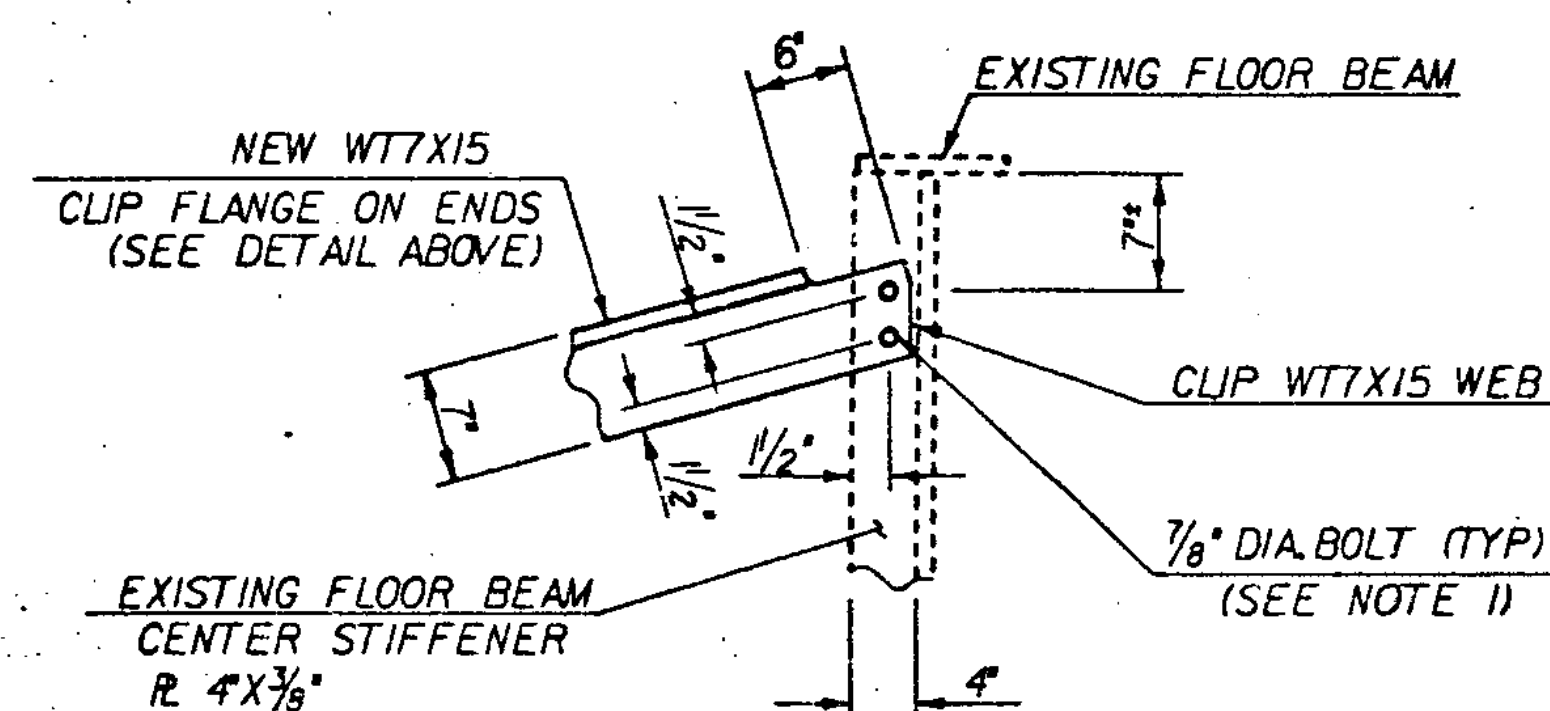
SECTION B - B
SCALE 1"=1'-0"



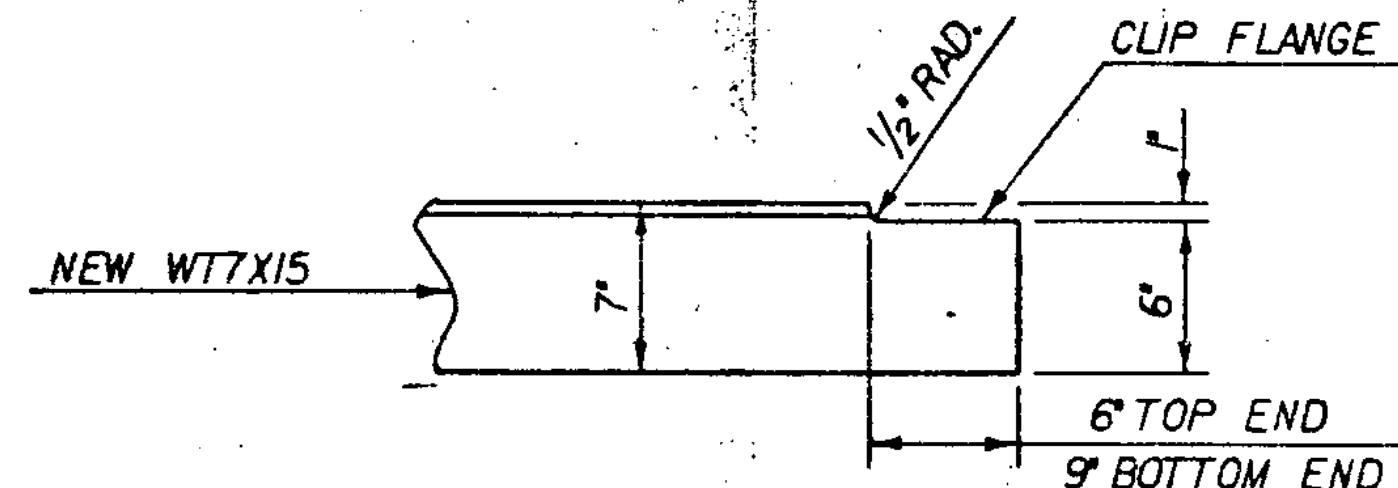
DETAIL D
SCALE 1"=1'-0"



DETAIL B
SCALE 1"=1'-0"



DETAIL C
SCALE 1"=1'-0"



FLANGE CLIP DETAIL
SCALE 1/2"=1'-0"

BAY LOCATION	APPROXIMATE LENGTH OF WTTX15	ANGLE 'A'
F.B.#1-F.B.#2	11'-2"	30°-12'-12"
F.B.#2-F.B.#3	11'-2"	30°-12'-12"
F.B.#3-F.B.#4	11'-2"	30°-12'-12"
F.B.#4-F.B.#5	—	45°-33'-5"
F.B.#5A-F.B.#6 S.B.	11'-2"	30°-13'-14"
F.B.#5A-F.B.#6 N.B.	10'-11"	30°-52'-44"
F.B.#6-F.B.#7 S.B.	11'-2"	30°-13'-14"
F.B.#6-F.B.#7 N.B.	10'-11"	30°-52'-44"
F.B.#7-F.B.#8 S.B.	11'-2"	30°-13'-14"
F.B.#7-F.B.#8 N.B.	10'-11"	30°-52'-44"
F.B.#8-F.B.#9 N.B.	10'-11"	30°-52'-44"
F.B.#9A-F.B.#10	9'-3"	35°-31'-31"
F.B.#10-F.B.#11	10'-1"	33°-1'-26"
F.B.#11-F.B.#55 SEE SHEETS 17 & 18	—	33°-1'-26"
F.B.#55-F.B.#56	10'-1"	33°-1'-26"
F.B.#56-F.B.#57	9'-3"	35°-31'-31"
F.B.#57A-F.B.#58	9'-3"	35°-31'-31"
F.B.#58-F.B.#59	10'-1"	33°-1'-26"
F.B.#59-F.B.#60	10'-1"	33°-1'-26"

* THERE IS NO FLOOR BEAM #8 ON THE SOUTH BOUND BRIDGE.

NOTE: UNLESS OTHERWISE NOTED NORTH BOUND (N.B.) AND SOUTH BOUND (S.B.) BRIDGES ARE THE SAME.

**STATE OF VERMONT
AGENCY OF TRANSPORTATION**

Town Of	HARTFORD	Bridge No.	44 N & S
Highway No.	191	Log Sta.	
		Surv. Sta.	
KNEE BRACING DETAILS FROM F.B.#1-11 AND #55-60			
191 OVER THE WHITE RIVER, U.S. RTE.4, AND VT. RTE. 14			
Designed By	A. ELWOOD	Drawn By	DAVE WILLEY
Checked By	J. POTTER	Date	3-84
		Bridge Design Supervisor	R. S. HAUPT
		Date	5-84
PROJECT	HARTFORD	PROJECT NO.	IR-91-2 (1)
U.G.C. Info.	05A1:30,25182A115LB.DGN		
Bridge Sheet No.		Sheet	16 of 30