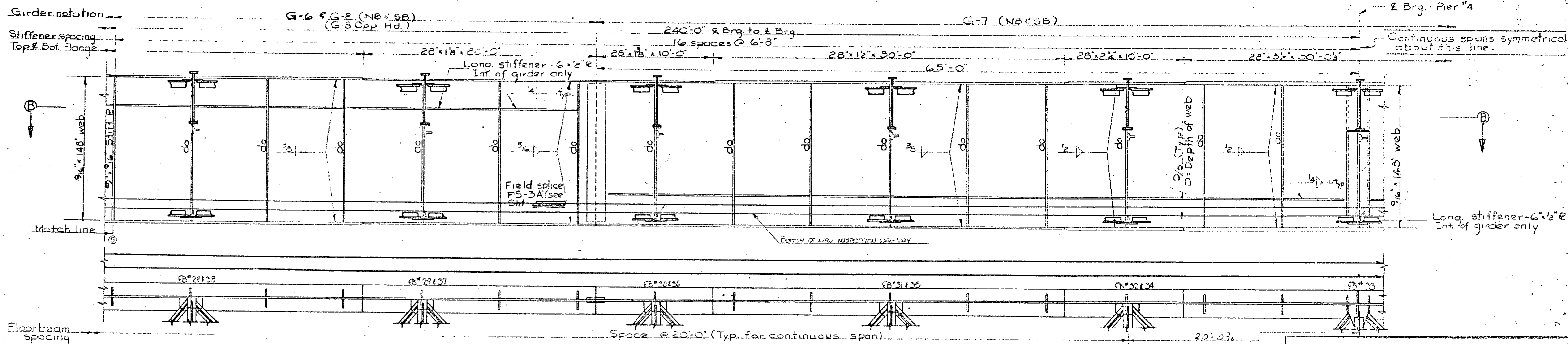
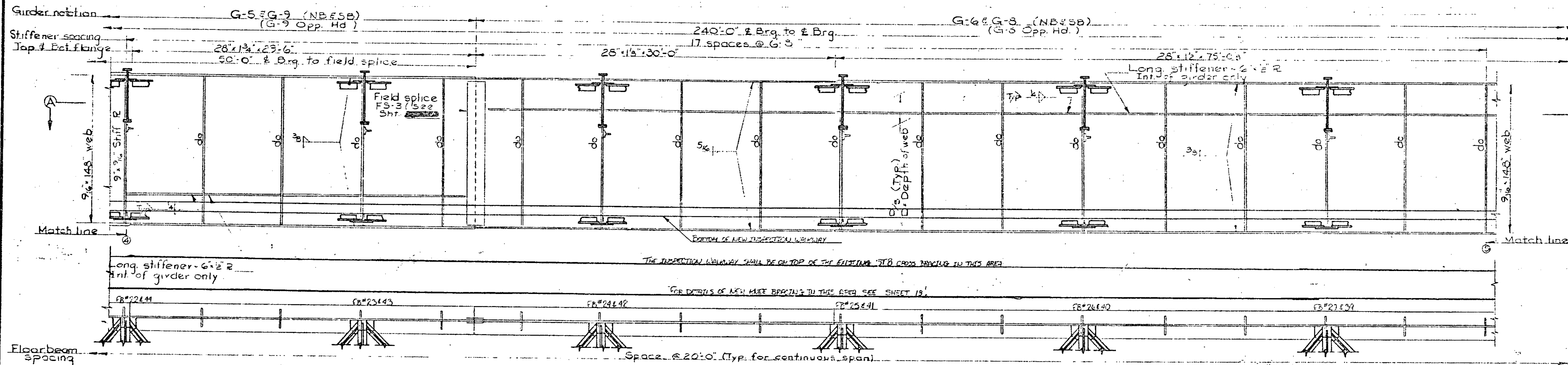
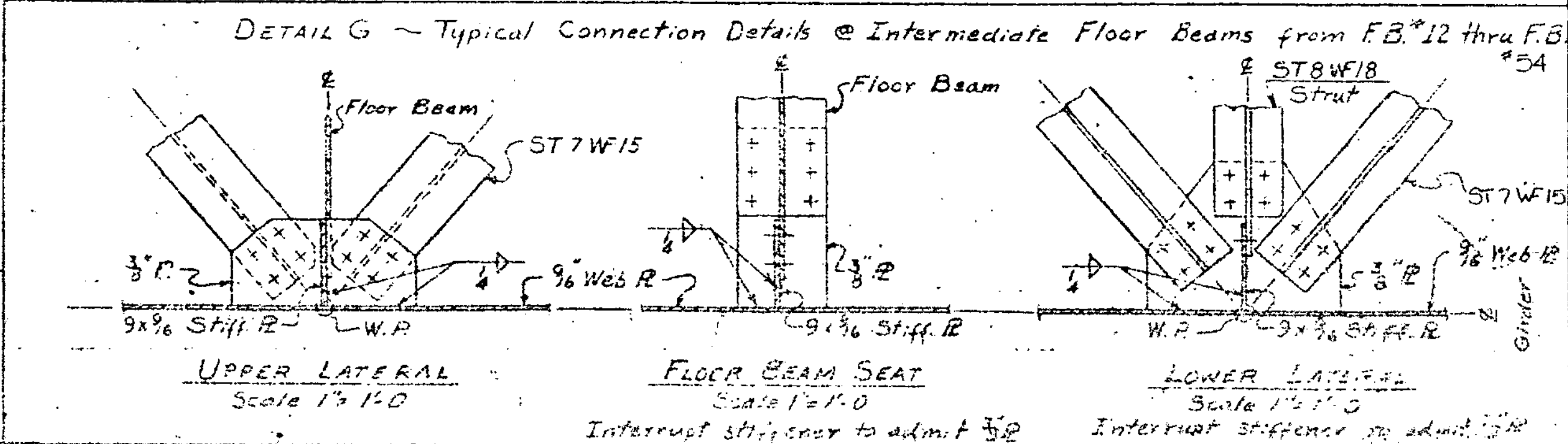


Weld sizes shown at change
in flange size



SECTION B-B

NOTE: THIS SHEET IS FROM THE ORIGINAL PROJECT PLANS,
AND IS FOR REFERENCE PURPOSES ONLY. THESE BRIDGES
WERE BUILT AS HARTFORD PROJECT NUMBER I-91-2(3)(22),
PLANS DATED 1963.



STATE OF VERMONT	
AGENCY OF TRANSPORTATION	
TOWN OF HARTFORD	BRIDGE NO. 44 N.E.5
HIGHWAY NO. 191	LOG STA.
	SURV. STA.
EXISTING GIRDER DETAILS	
191 OVER THE WHITE RIVER AND U.S. Rte 4 AND VERMONT	
DESIGNED BY A. E. WOOD	DRAWN BY NET
CHECKED BY D.C. WILLEY	BRIDGE DESIGN SUPERVISOR
DATE 7-17-81	DATE 7-81
PROJECT HARTFORD	PROJECT NO. IR-91-2(1)
BRIDGE SHEET NO.	SHEET 7 OF 30