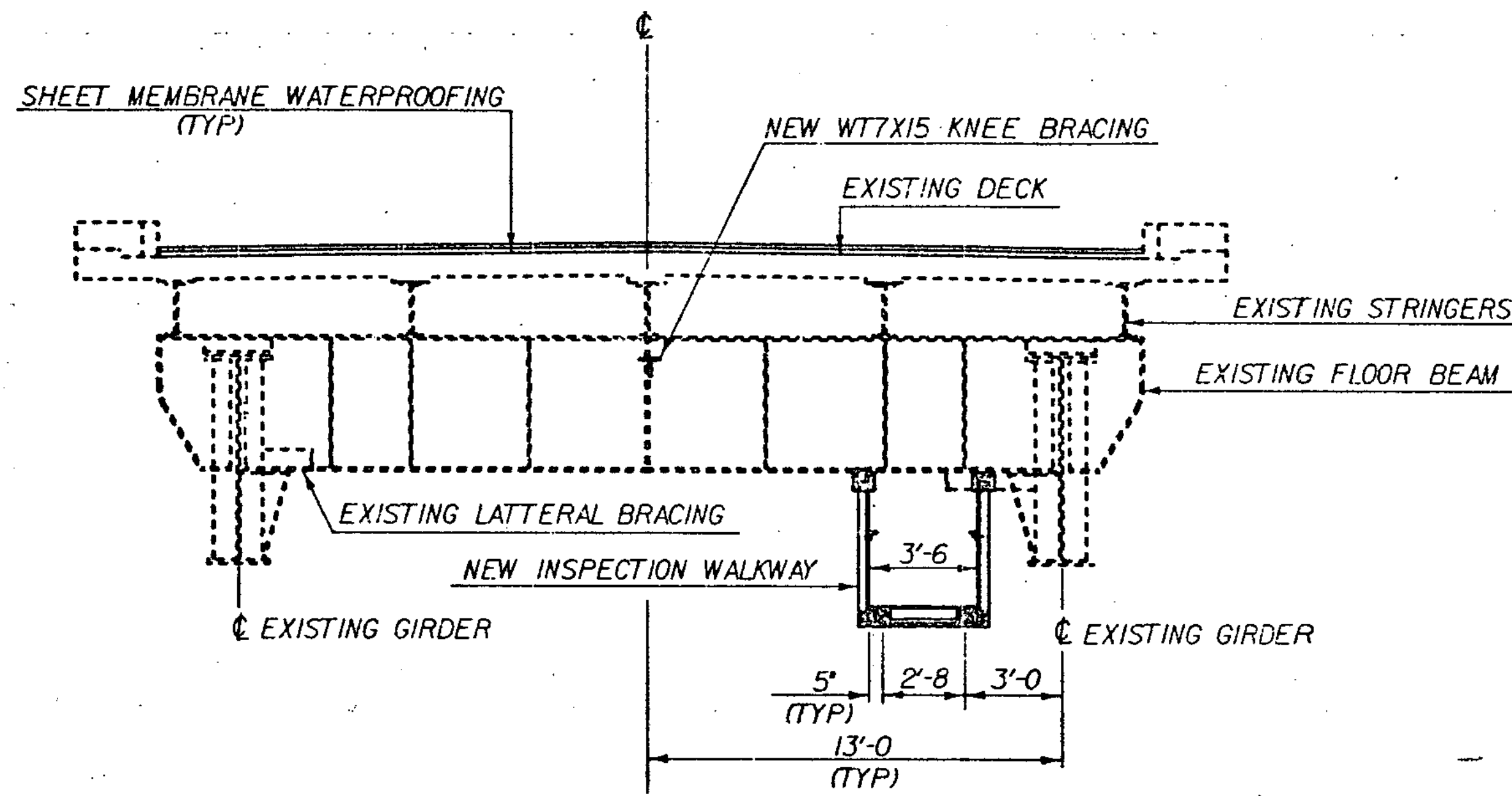


SECTION A - A
SCALE 1/4"=1'-0"

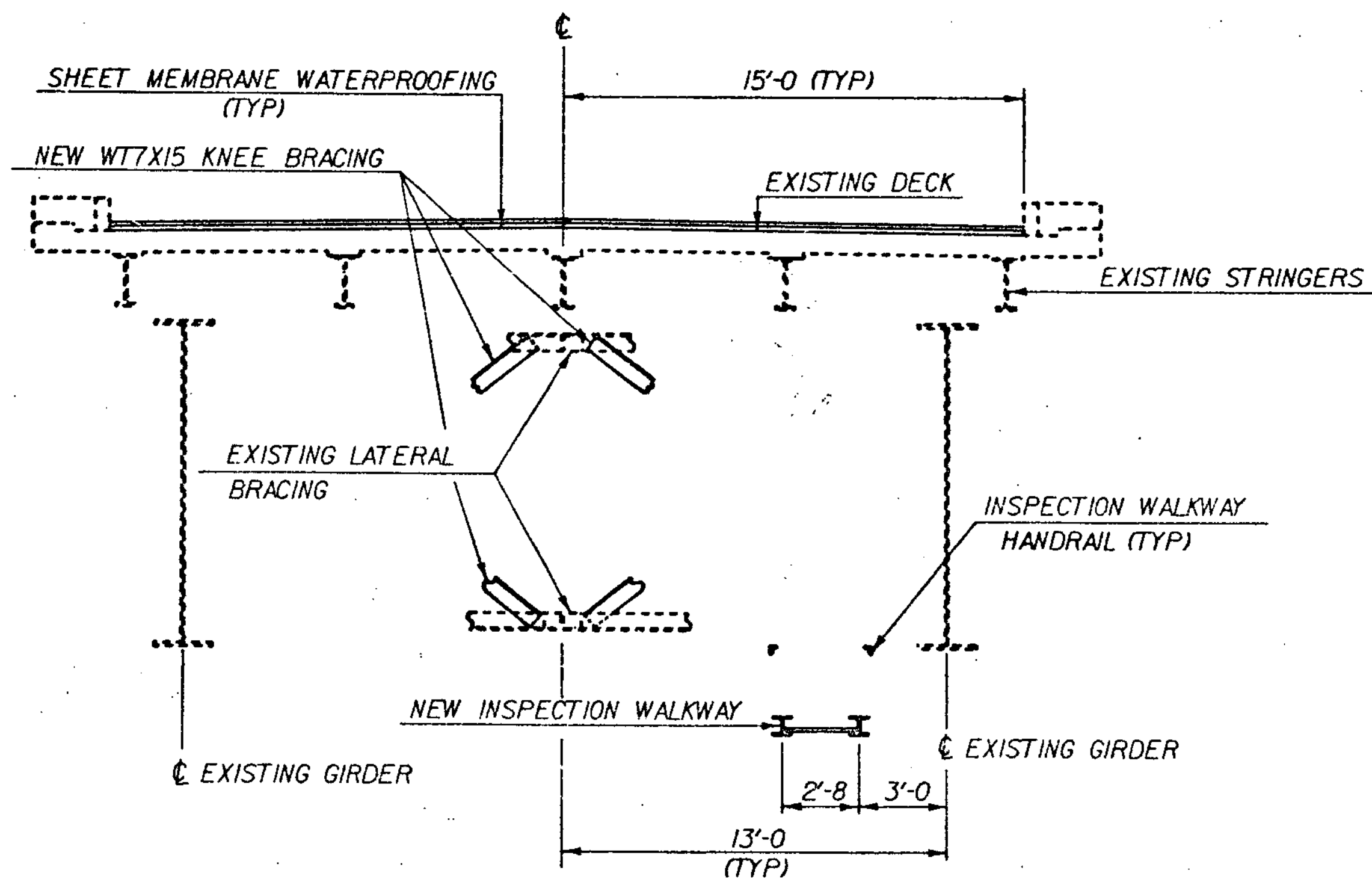
THESE SECTIONS TYPICAL FROM F.B.*1-10 AND F.B.*56-60 FOR THE INSPECTION WALKWAY.
THESE SECTIONS TYPICAL FROM F.B.*1-11 AND F.B.*55-60 FOR THE NEW KNEE BRACING.



SECTION B - B
SCALE 1/4"=1'-0"

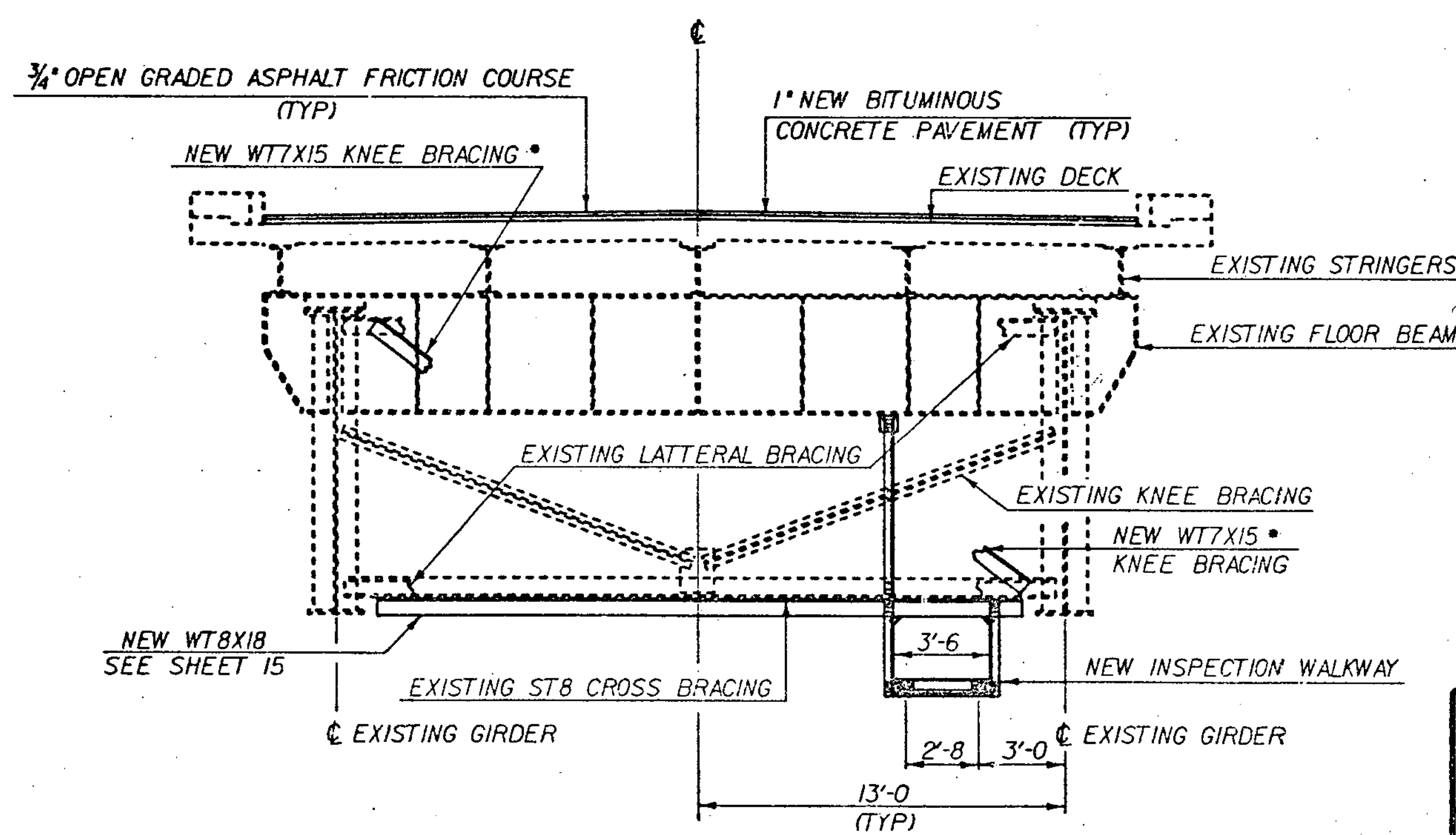
NOTES

1. SEE SHEET 4 FOR LOCATION OF SECTIONS.
2. FOR INSPECTION WALKWAY DETAILS SEE SHEETS 11-15.
3. FOR KNEE BRACING DETAILS SEE SHEETS 16-18.



SECTION C - C
SCALE 1/4"=1'-0"

THESE SECTIONS TYPICAL FROM F.B.*11-21 AND F.B.*45-55 FOR THE INSPECTION WALKWAY.
THESE SECTIONS TYPICAL FROM F.B.*11-20 AND F.B.*46-55 FOR THE NEW KNEE BRACING.



SECTION D - D
SCALE 1/4"=1'-0"

* PRECEDING FLOOR BEAM SIMILAR EXCEPT OPPOSITE HAND FOR KNEE BRACING ONLY.

**STATE OF VERMONT
AGENCY OF TRANSPORTATION**

Town Of HARTFORD	Bridge No. 44 N&S
Highway No. 191	Log Sta. Surv. Sta.

TYPICAL SECTIONS

191 OVER THE WHITE RIVER, U.S. RTE. 4 AND VT. RTE. 14

Designed By A. ELWOOD	Drawn By D. C. WILLEY
Checked By A. ELWOOD	Bridge Design Supervisor R. S. HAUPT
Date 7-27-84	Date 7-84

PROJECT HARTFORD	PROJECT NO. 1R-91-2 (1)
-------------------------	--------------------------------

U.C. Info. 05423025182A157 P100N	Sheet 5 of 30
---	-----------------------------