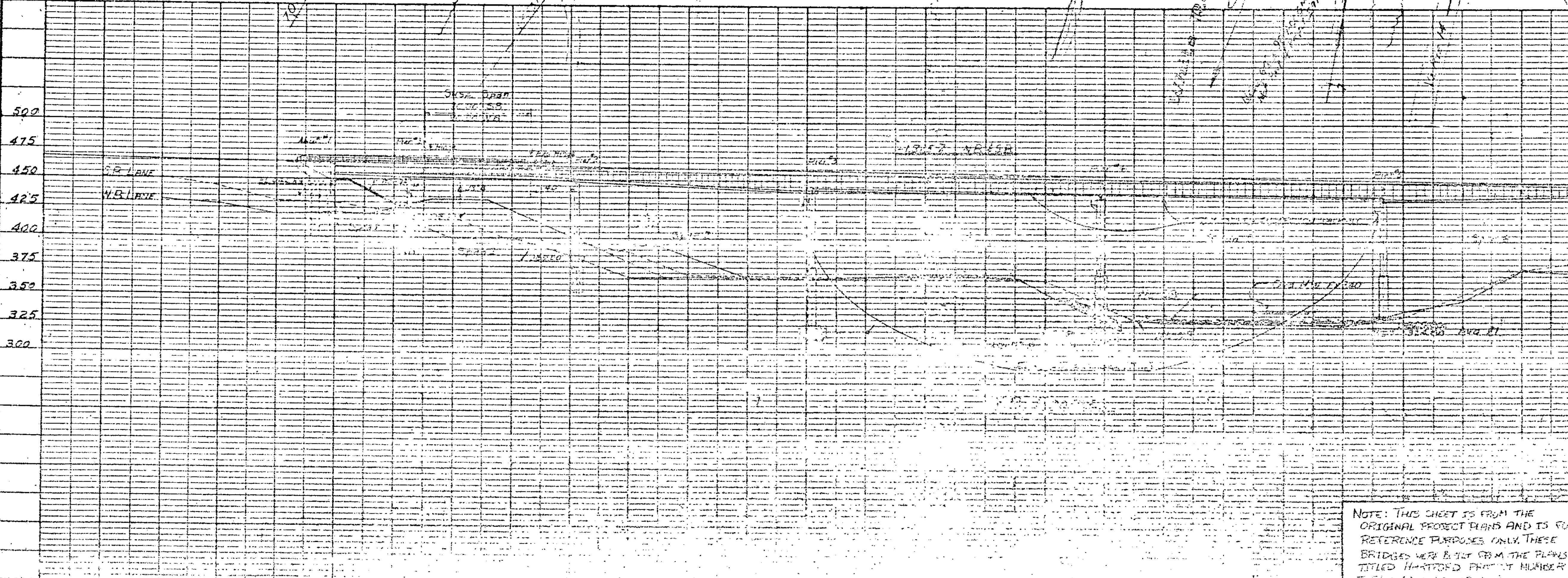
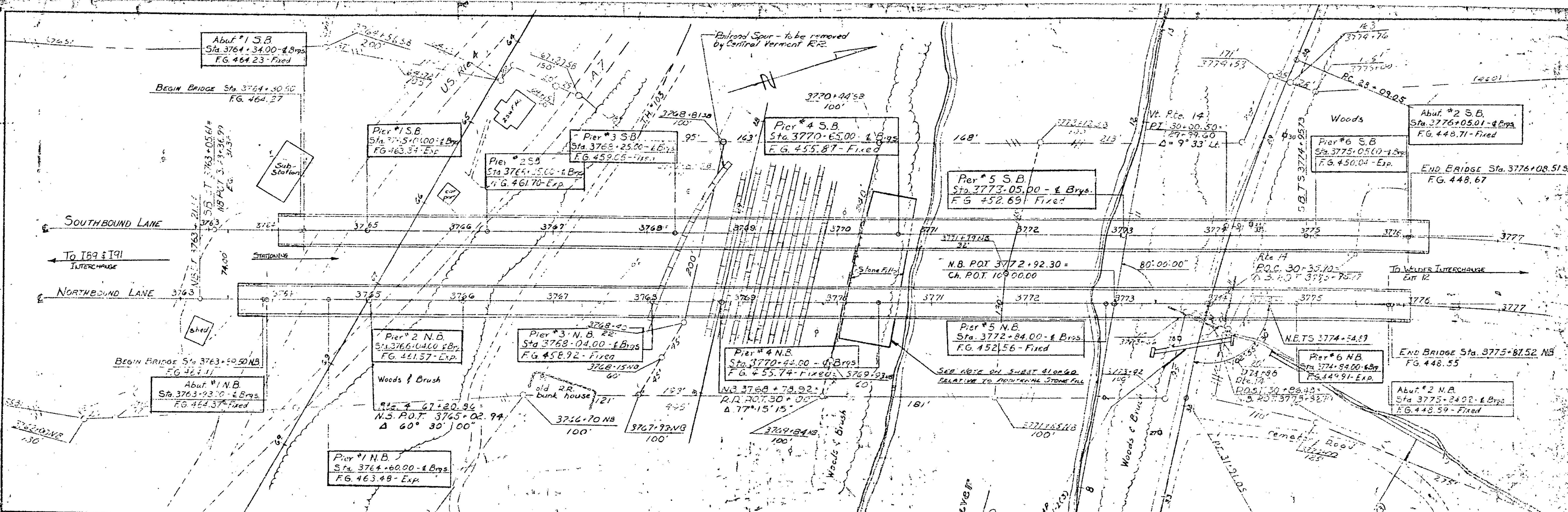


DATE: 7-1-24
 BY: J. G. GIBB
 CHECKED: J. G. GIBB
 PROJECT: I-91
 SHEET: 2 OF 2



**STATE OF VERMONT
 AGENCY OF TRANSPORTATION**

TOWN OF HARTFORD BRIDGE NO. 44115
 HIGHWAY NO. I-91 LOG STA.
 SURV. STA.

PLAN AND PROFILE
 I-91 OVER WHITE FERRIS RIVER AND VT. Rte. 14
 DESIGNED BY J. G. Gibb DRAWN BY J. G. Gibb
 CHECKED BY J. G. Gibb BRIDGE DESIGN SUPERVISOR
 DAVID WILEY DATE 7-1-24 RS HAUPT DATE 7-6-24
 PROJECT HARTFORD PROJECT NO. 19-91-2(1)
 BRIDGE SHEET NO. SHEET 2 OF 2

NOTE: THIS SHEET IS FROM THE ORIGINAL PROJECT PLANS AND IS FOR REFERENCE PURPOSES ONLY. THESE BRIDGES WERE BUILT FROM THE PLANS TITLED HARTFORD PROJECT NUMBER 19-91-2(1).