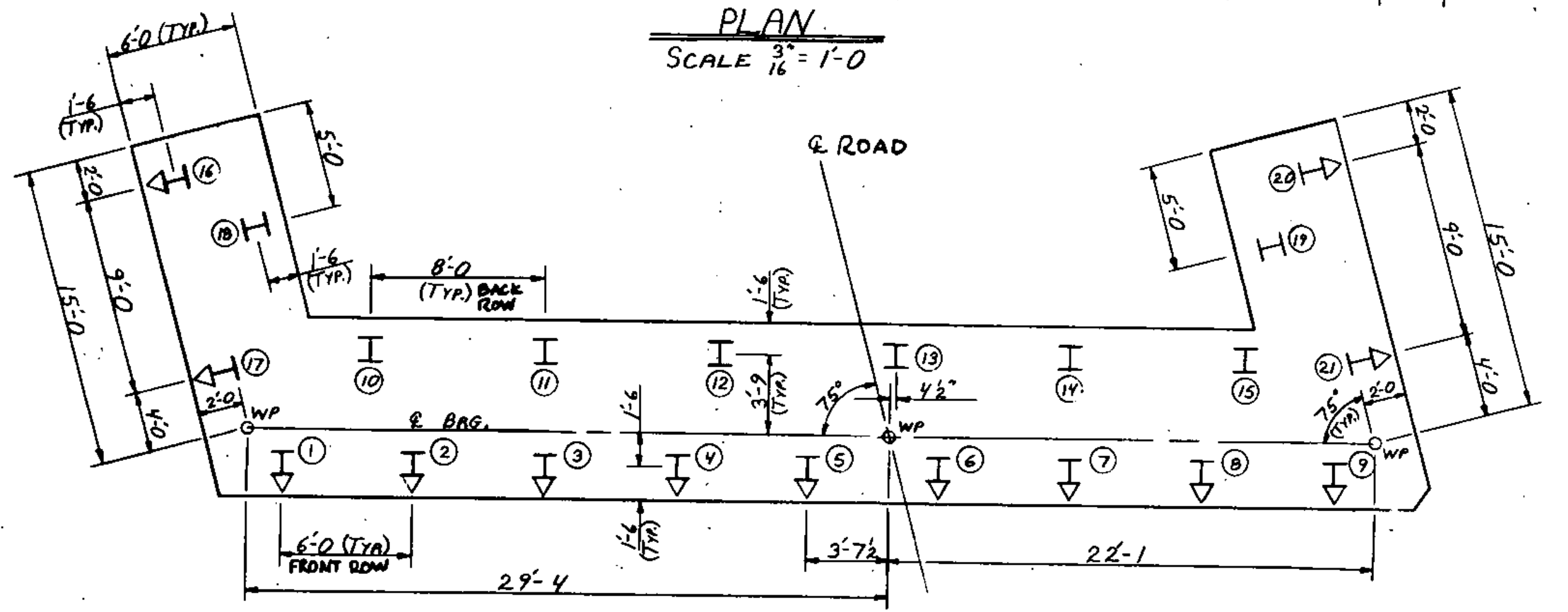
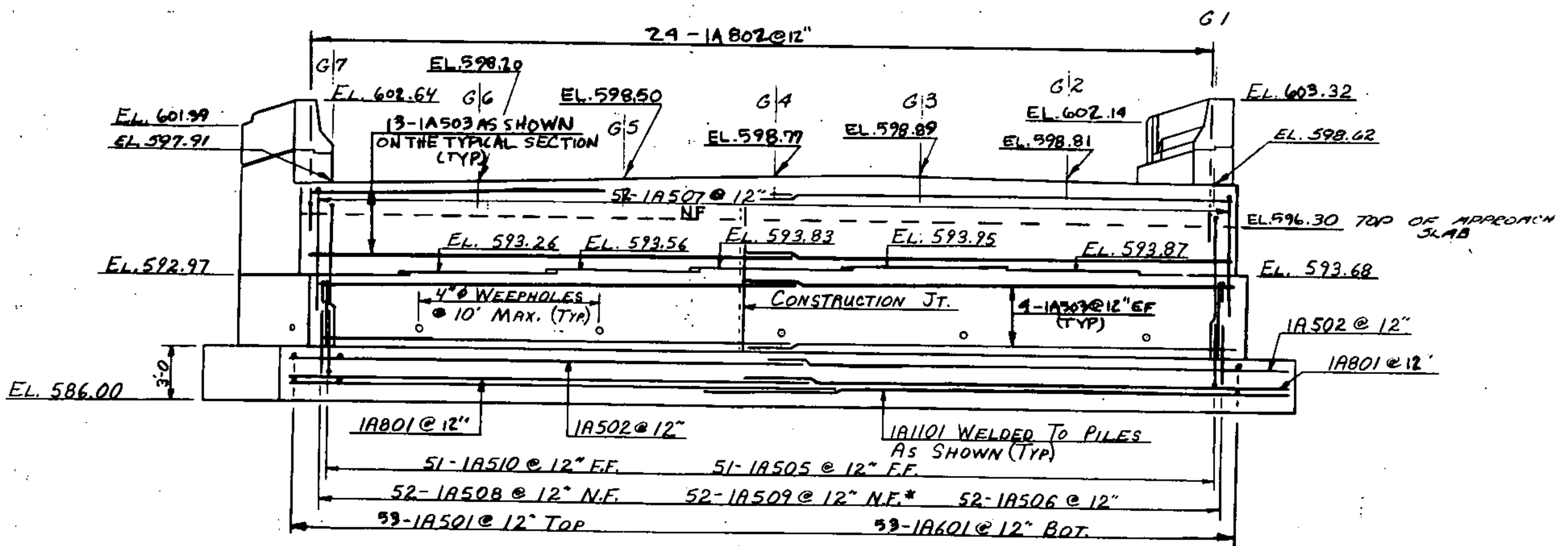


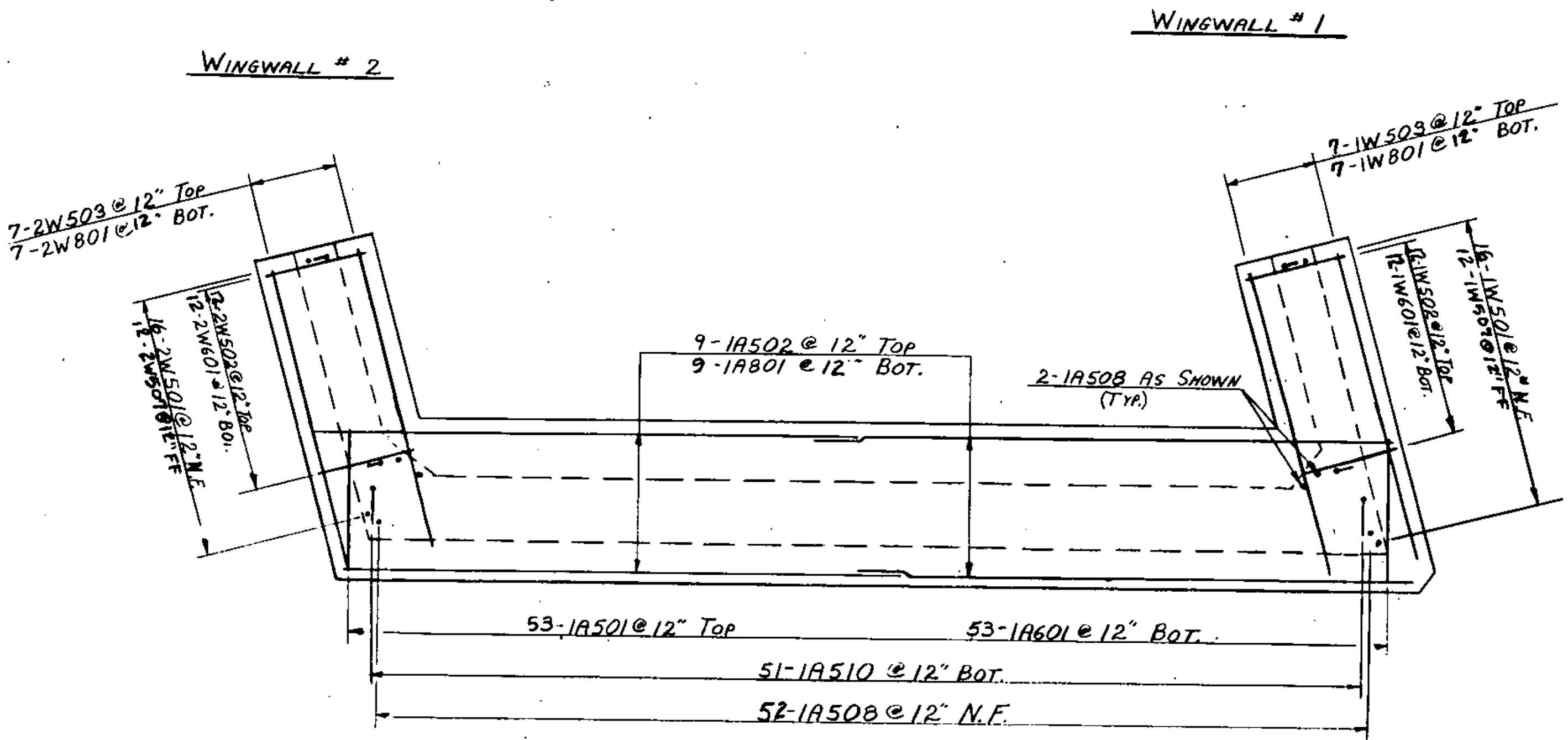
PLAN
SCALE 3/16" = 1'-0"



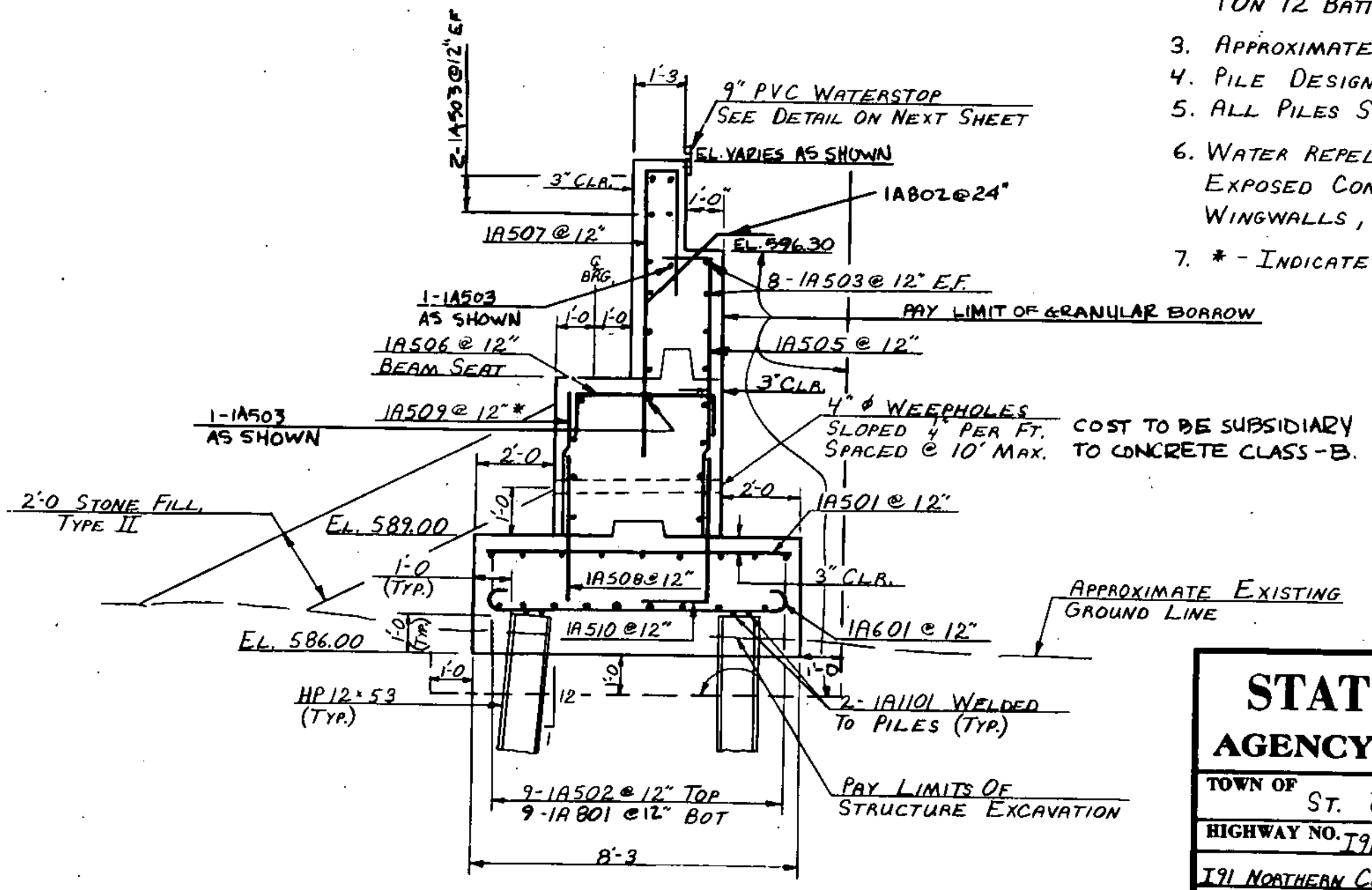
PILE LAYOUT
SCALE 3/16" = 1'-0"



ELEVATION
SCALE 3/8" = 1'-0"



FOOTING REINFORCING PLAN
SCALE 3/8" = 1'-0"



ABUTMENT TYPICAL SECTION
SCALE 3/8" = 1'-0"

NOTES

1. I- INDICATES LOCATION OF A VERTICAL PILE.
2. I with arrow - INDICATES LOCATION AND DIRECTION OF 1 ON 12 BATTERED PILE.
3. APPROXIMATE LENGTH OF THE PILES IS 50'.
4. PILE DESIGN LOAD IS 69 TONS.
5. ALL PILES SHALL BE DRIVEN TO LEDGE OR REFUSAL.
6. WATER REPELLENT SHALL BE APPLIED TO ALL EXPOSED CONCRETE SURFACES OF THE CURBS, WINGWALLS, ABUTMENTS AND BACKWALLS.
7. * - INDICATES CUT TO FIT IN THE FIELD.

STATE OF VERMONT	
AGENCY OF TRANSPORTATION	
TOWN OF ST. JOHNSBURY	Bridge No. 1
HIGHWAY NO. 191 NORTHERN CONN.	Log Sta.
	Surv. Sta. 60+0
191 NORTHERN CONNECTOR OVER PASSUMPSIC RIVER	
ABUTMENT NO. 1 DETAILS	
Designed by G.V. SPILAK	Drawn by D.C. WILLEY
Checked by M. GARCIA	Bridge Design Supervisor
date 7-84	R.S. HAUPT
	date 12-83
PROJECT ST. JOHNSBURY	PROJECT NO. DP-FF 041-1(10)
Bridge Sheet No. BR119	Sheet 77 of 229