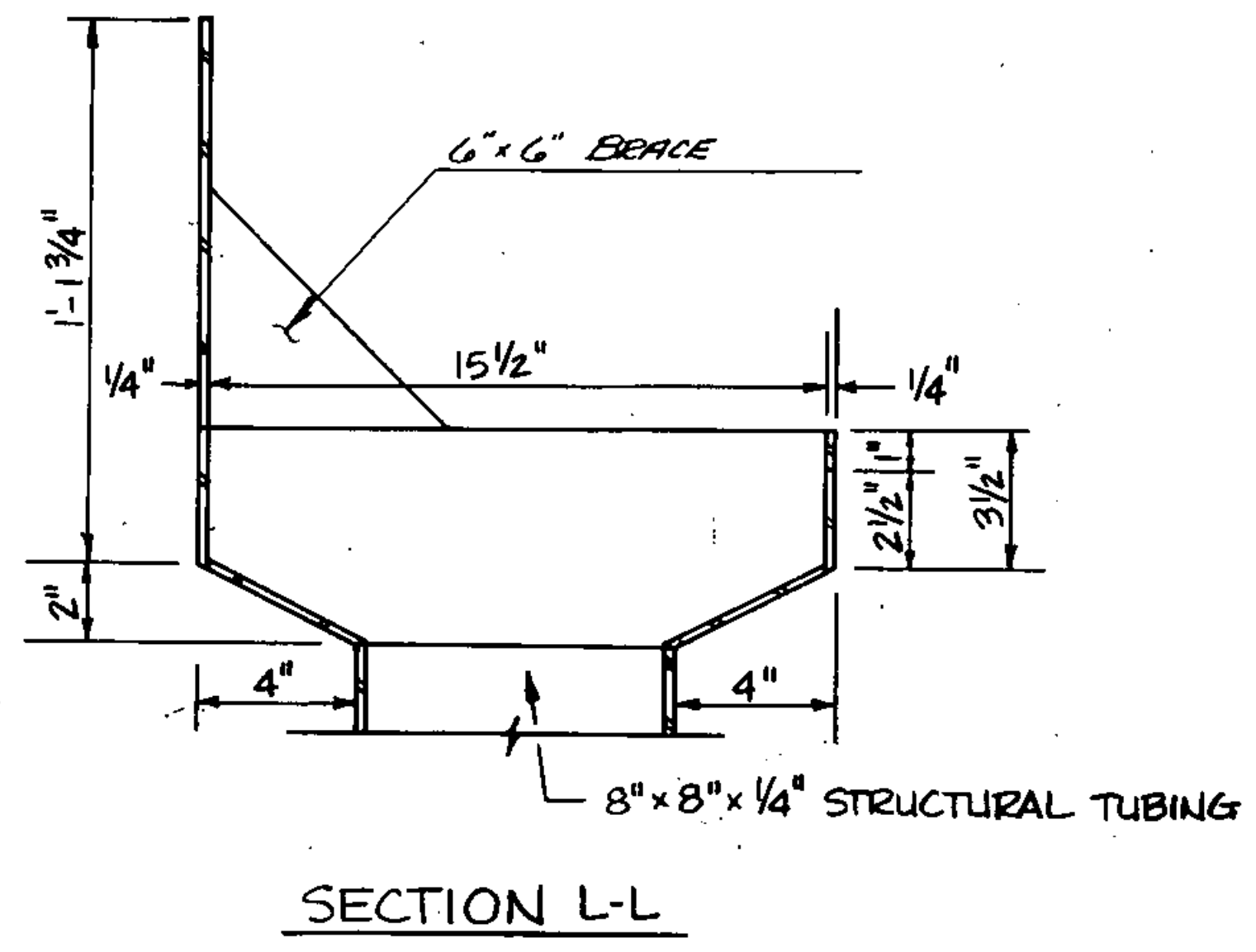
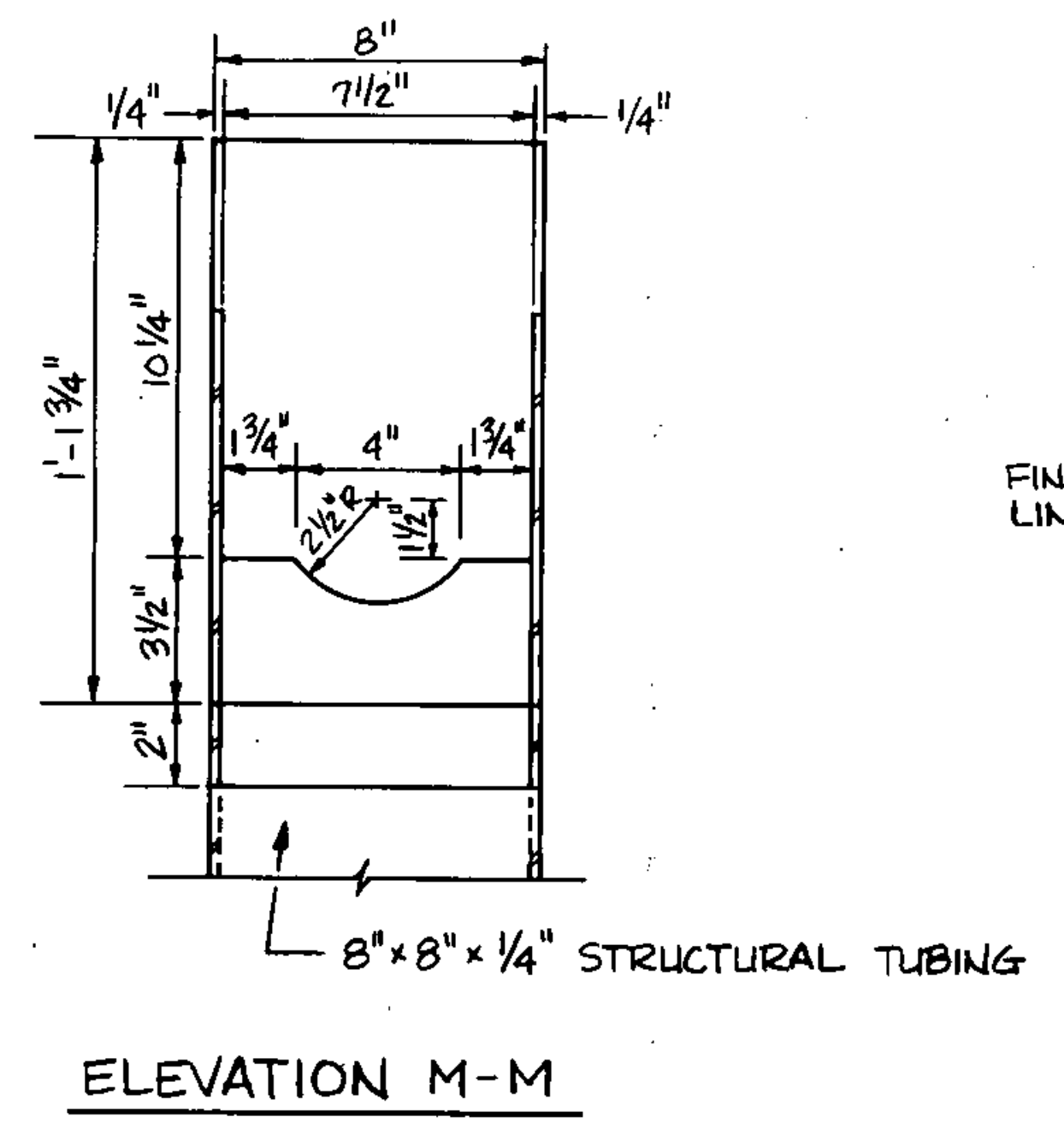
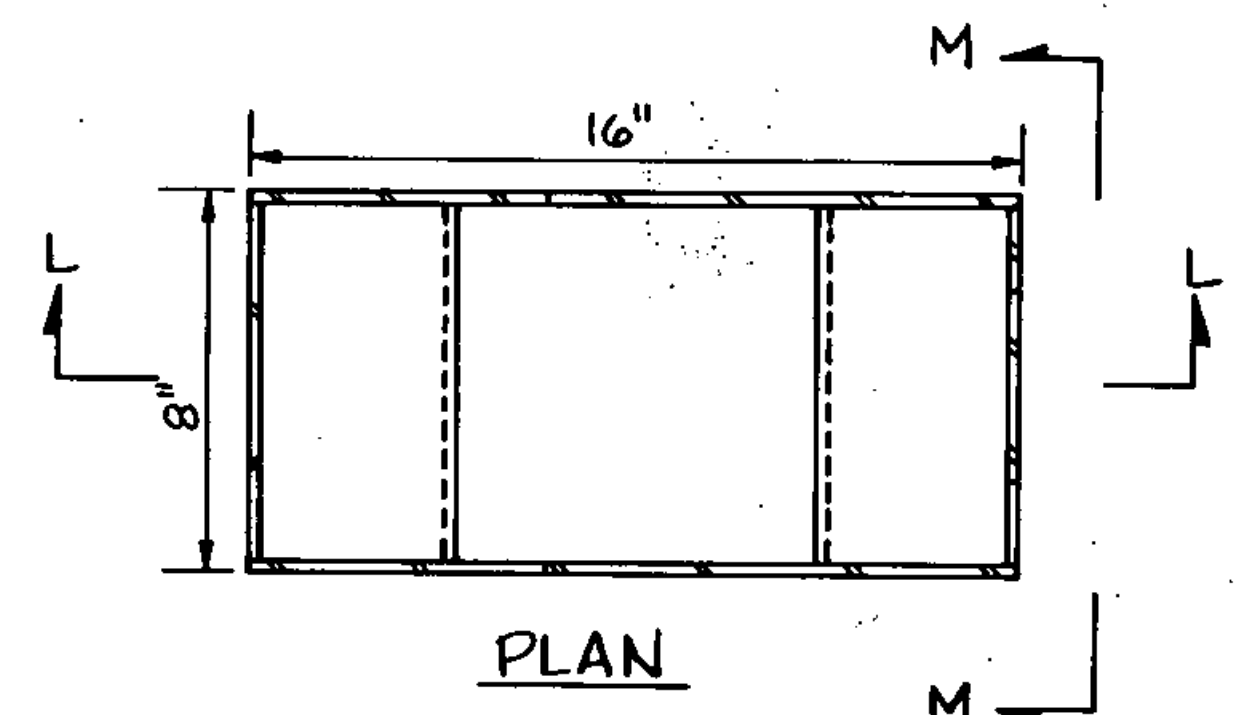
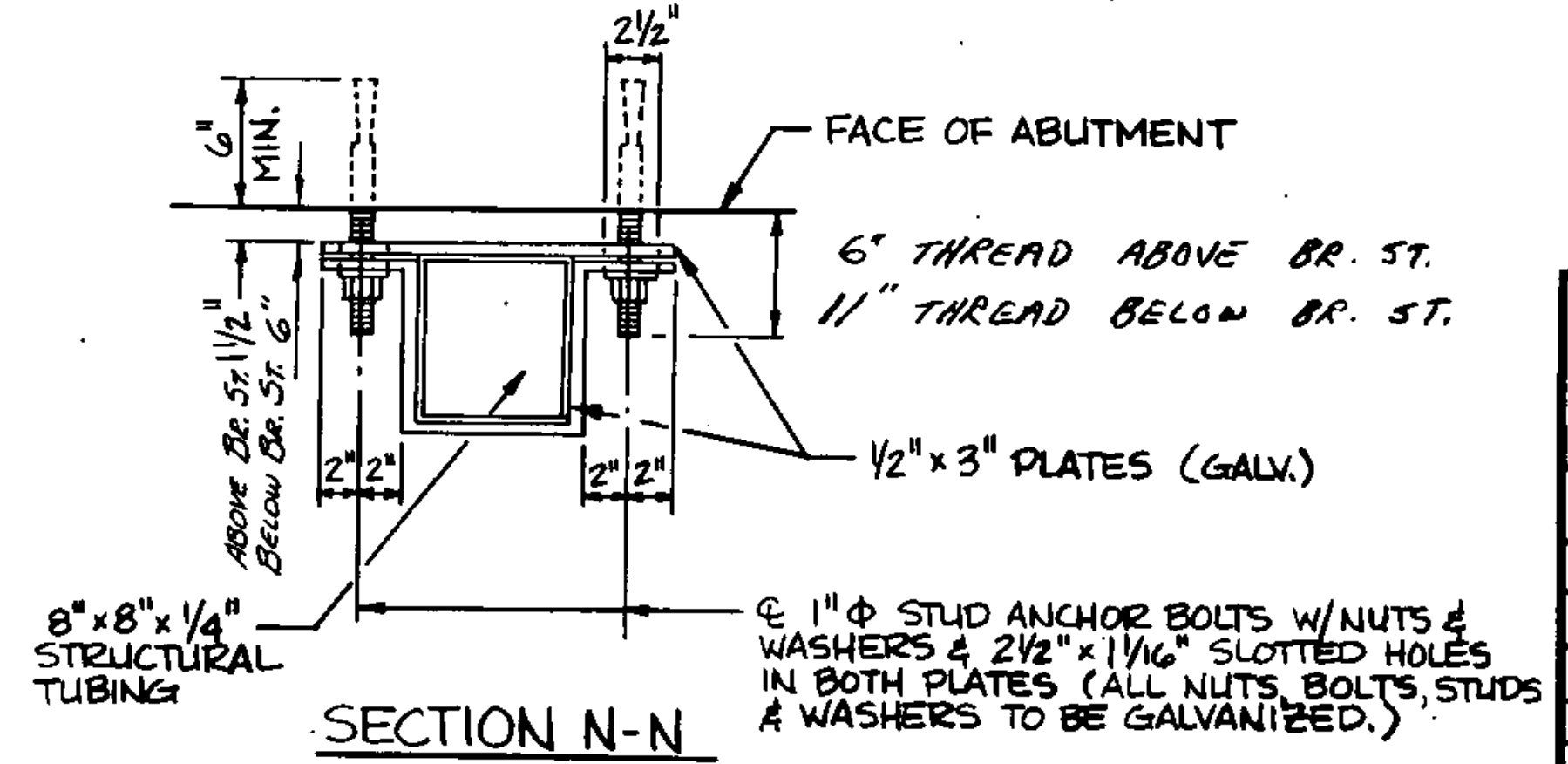
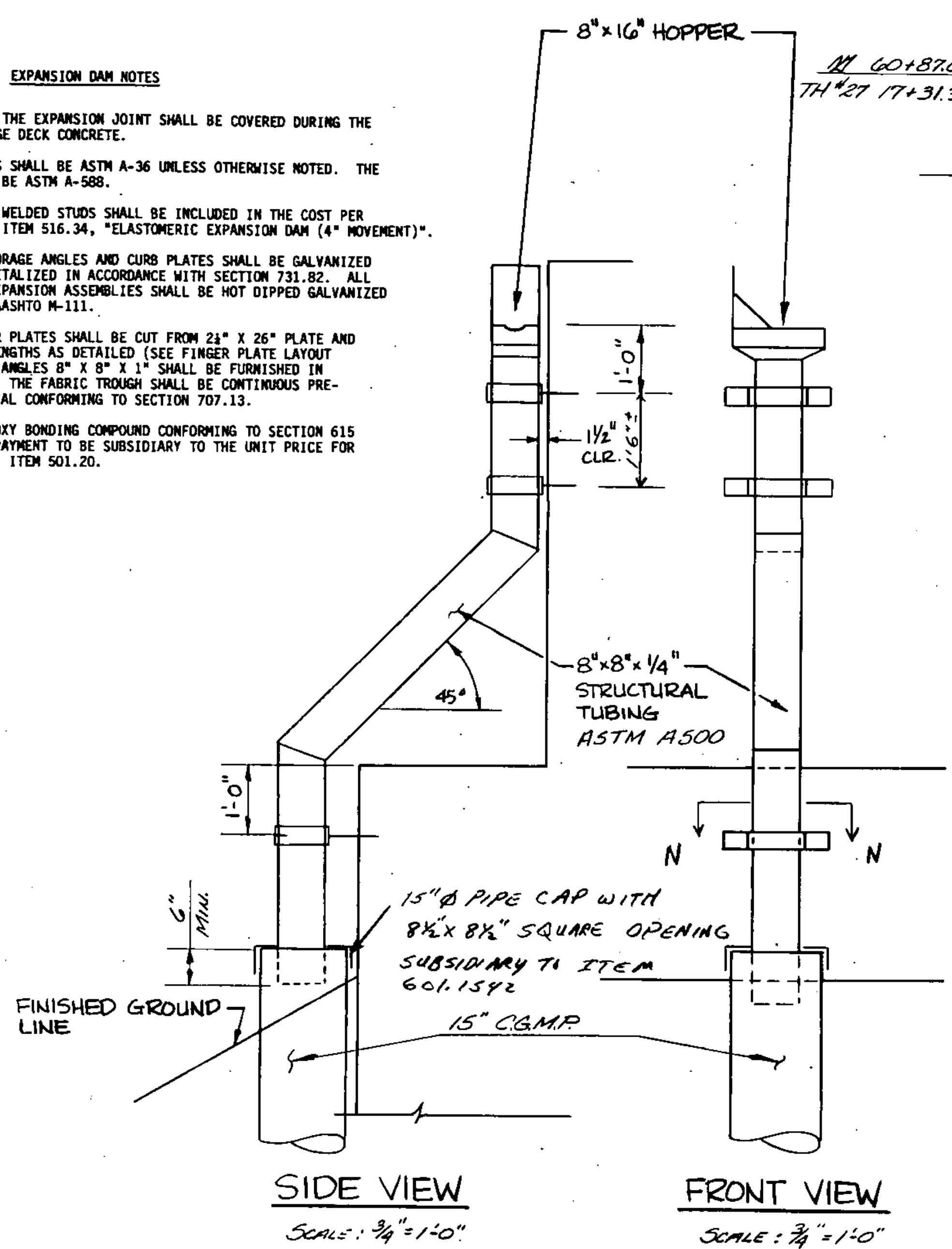


- EXPANSION DAM NOTES**
1. THE FINAL FINISH OF THE EXPANSION JOINT SHALL BE COVERED DURING THE PLACING OF THE BRIDGE DECK CONCRETE.
 2. ALL STEEL COMPONENTS SHALL BE ASTM A-36 UNLESS OTHERWISE NOTED. THE FINGER PLATES SHALL BE ASTM A-588.
 3. ALL CURB PLATES AND WELDED STUDS SHALL BE INCLUDED IN THE COST PER LINEAR FOOT BID FOR ITEM 516.34, "ELASTOMERIC EXPANSION DAM (4" MOVEMENT)".
 4. FINGER PLATES, ANCHORAGE ANGLES AND CURB PLATES SHALL BE GALVANIZED (AASHTO M-111) OR METALIZED IN ACCORDANCE WITH SECTION 731.82. ALL HARDWARE AND CURB EXPANSION ASSEMBLIES SHALL BE HOT DIPPED GALVANIZED IN ACCORDANCE WITH AASHTO M-111.
 5. THE 21" THICK FINGER PLATES SHALL BE CUT FROM 21" X 26" PLATE AND FURNISHED IN FOUR LENGTHS AS DETAILED (SEE FINGER PLATE LAYOUT SHEET BR 116). THE ANGLES 8" X 8" X 1" SHALL BE FURNISHED IN CONTINUOUS LENGTHS. THE FABRIC TROUGH SHALL BE CONTINUOUS PRE-FORMED FABRIC MATERIAL CONFORMING TO SECTION 707.13.
 6. WHERE INDICATED, EPOXY BONDING COMPOUND CONFORMING TO SECTION 615 SHALL BE APPLIED. PAYMENT TO BE SUBSIDIARY TO THE UNIT PRICE FOR "CONCRETE, CLASS A", ITEM 501.20.

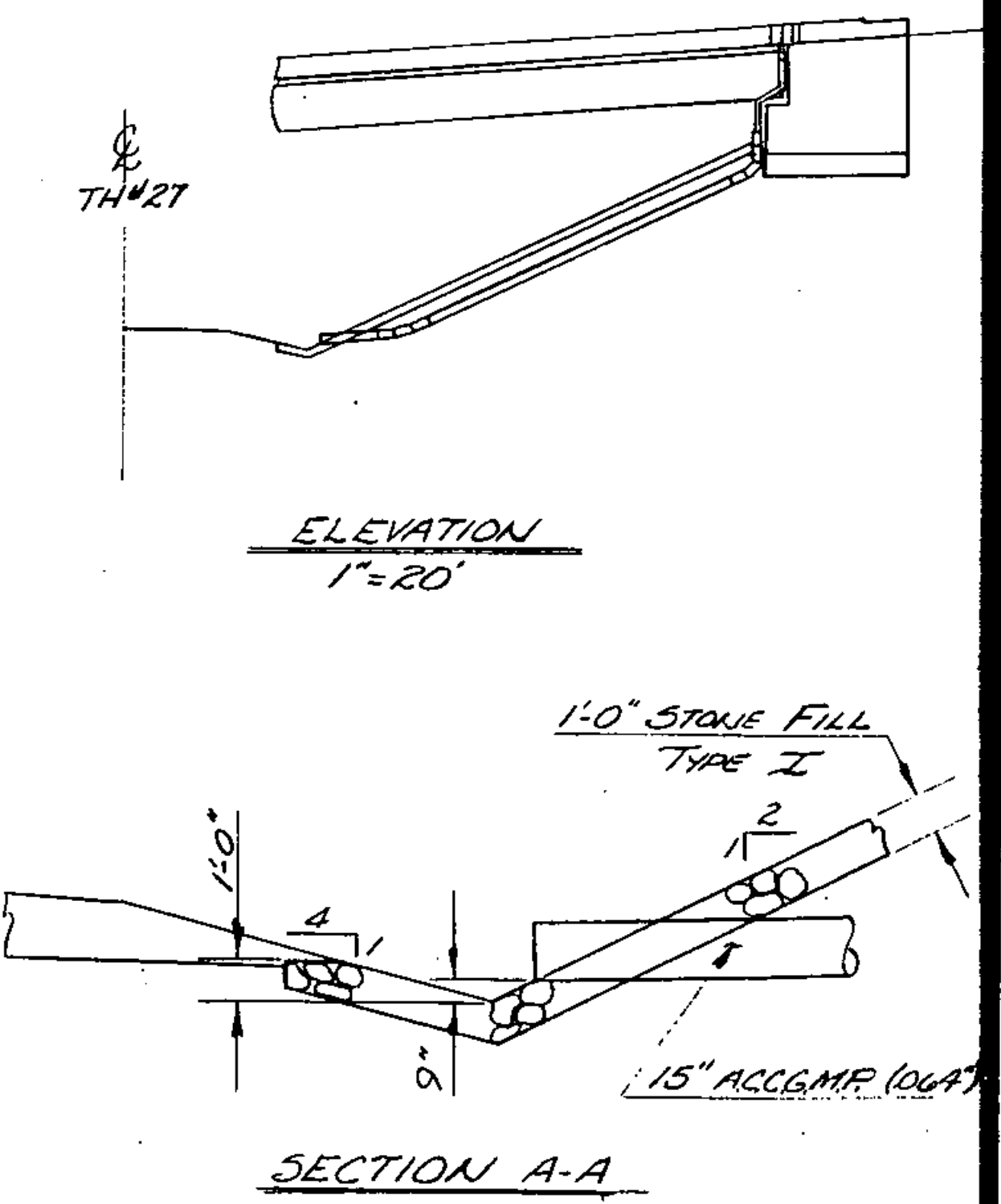
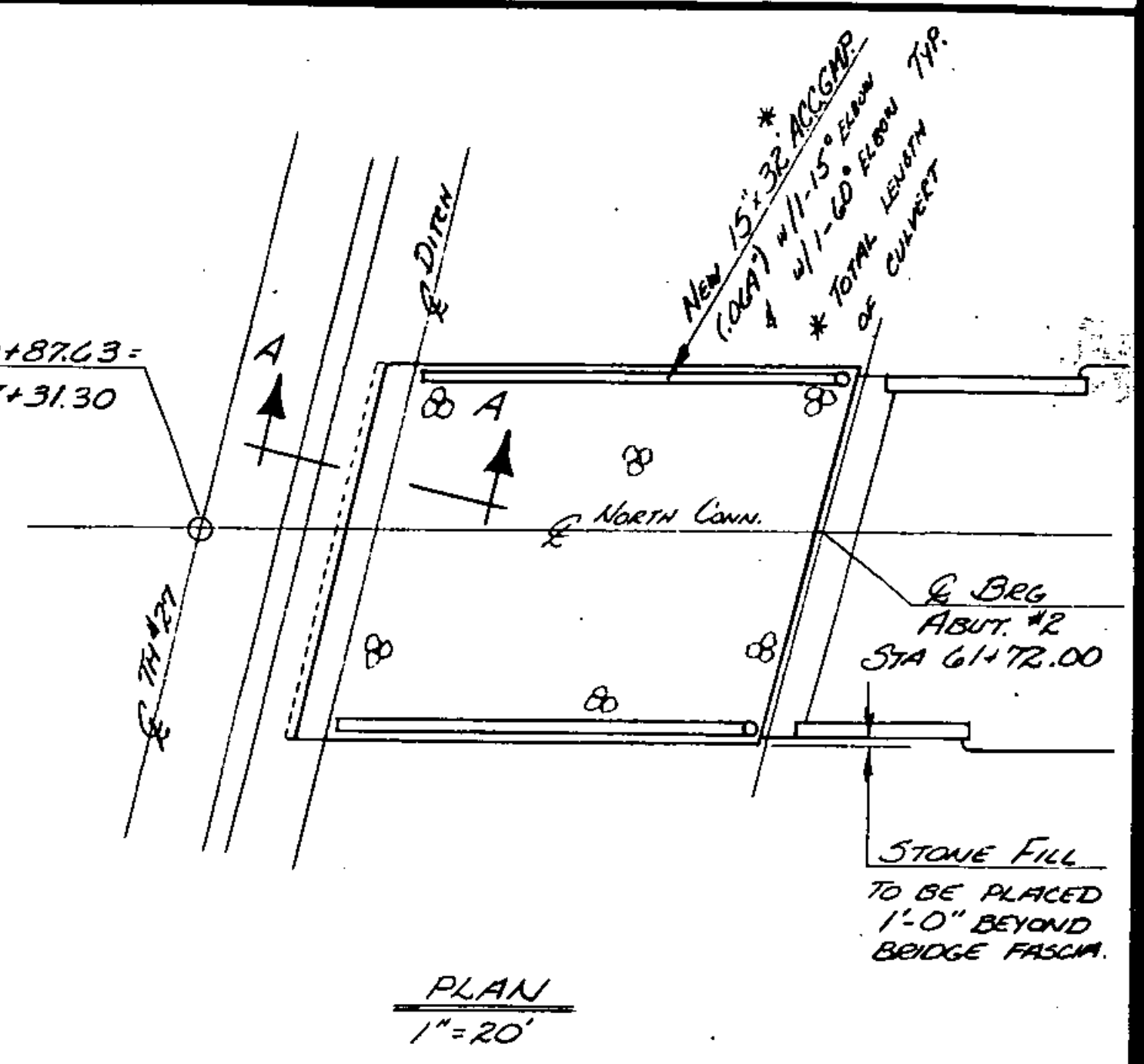


HOPPER DETAILS
SCALE: 3" = 1'-0"
(2 REQUIRED)

SEE BR118 FOR ADDITIONAL HOPPER / SCUPPER NOTES



TYPICAL DOWNSPOUT DETAILS
SCALE: 1 1/2" = 1'-0"



STATE OF VERMONT	
AGENCY OF TRANSPORTATION	
TOWN OF ST. JOHNSBURY	Bridge No. 1
HIGHWAY NO. I-91 NORTH CONNECTOR	Log Sta. 60+0
I-91 NORTH CONNECTOR OVER PASSUMPSIC RIVER	
EXPANSION JOINT DETAILS - ABUT #2	
Designed by G.V. SPILAK	Drawn by G. KLINEFELTER
Checked by G.V.S.	Bridge Design Supervisor R.S. HAUPT
date 12/84	date
PROJECT ST. JOHNSBURY	PROJECT NO. DP-FF041-1(10)
Bridge Sheet No. BR117	Sheet 75 of 229