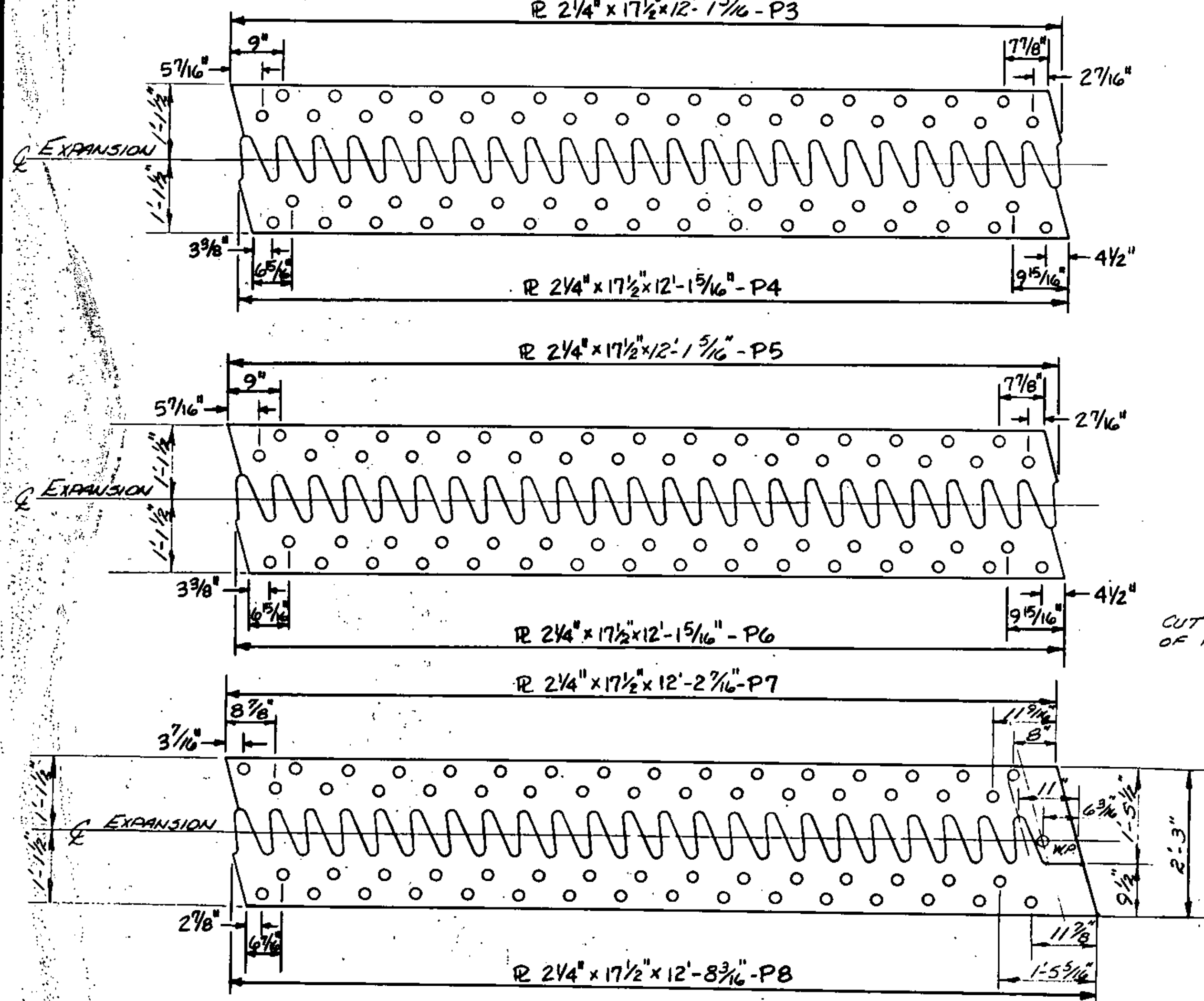
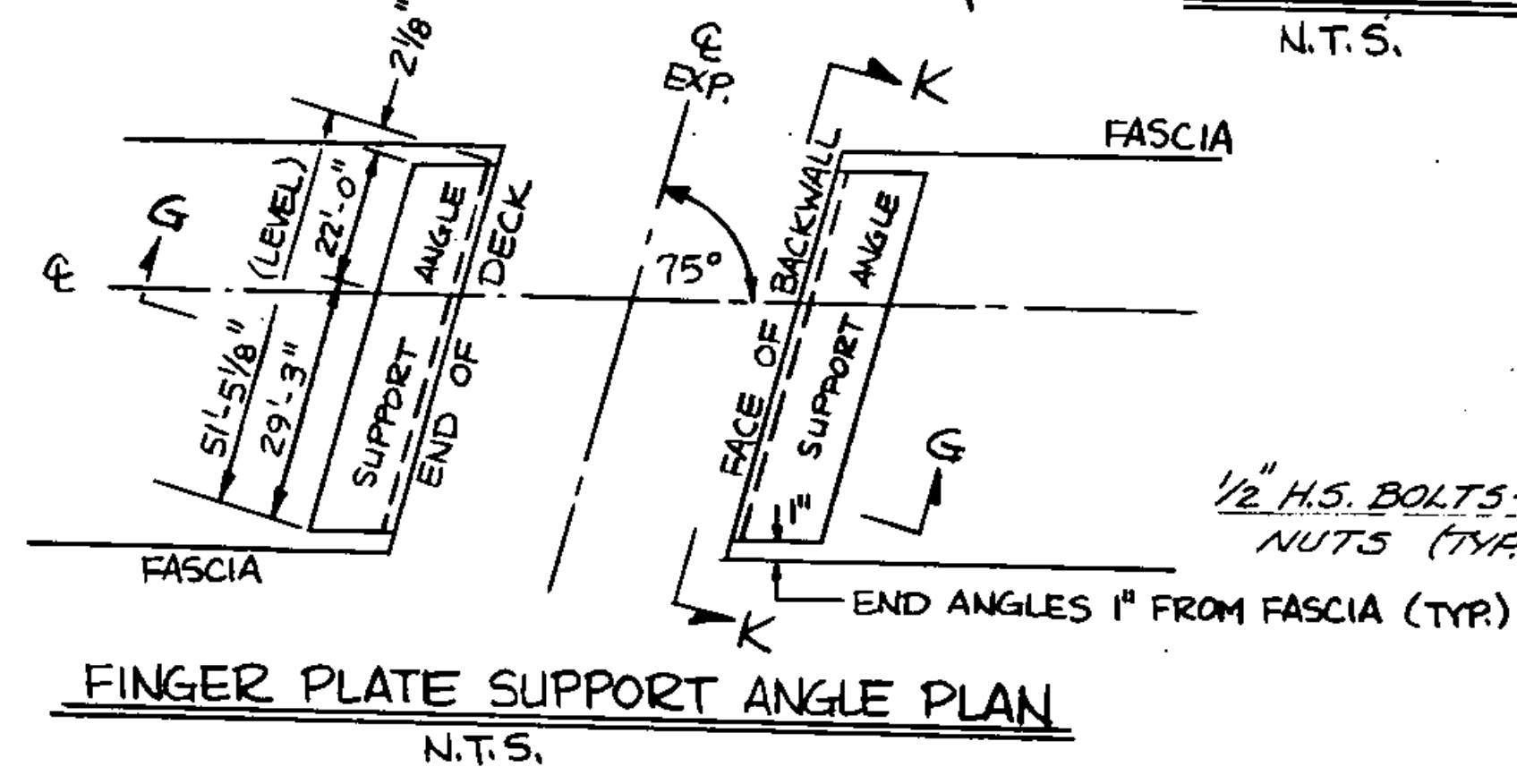


FINGER PLATE PROFILE
SCALE: 1" = 5' HORIZ. VERT. N.T.S.
NOTE: DISTANCES SHOWN ARE ALONG SKEW UNLESS OTHERWISE NOTED.

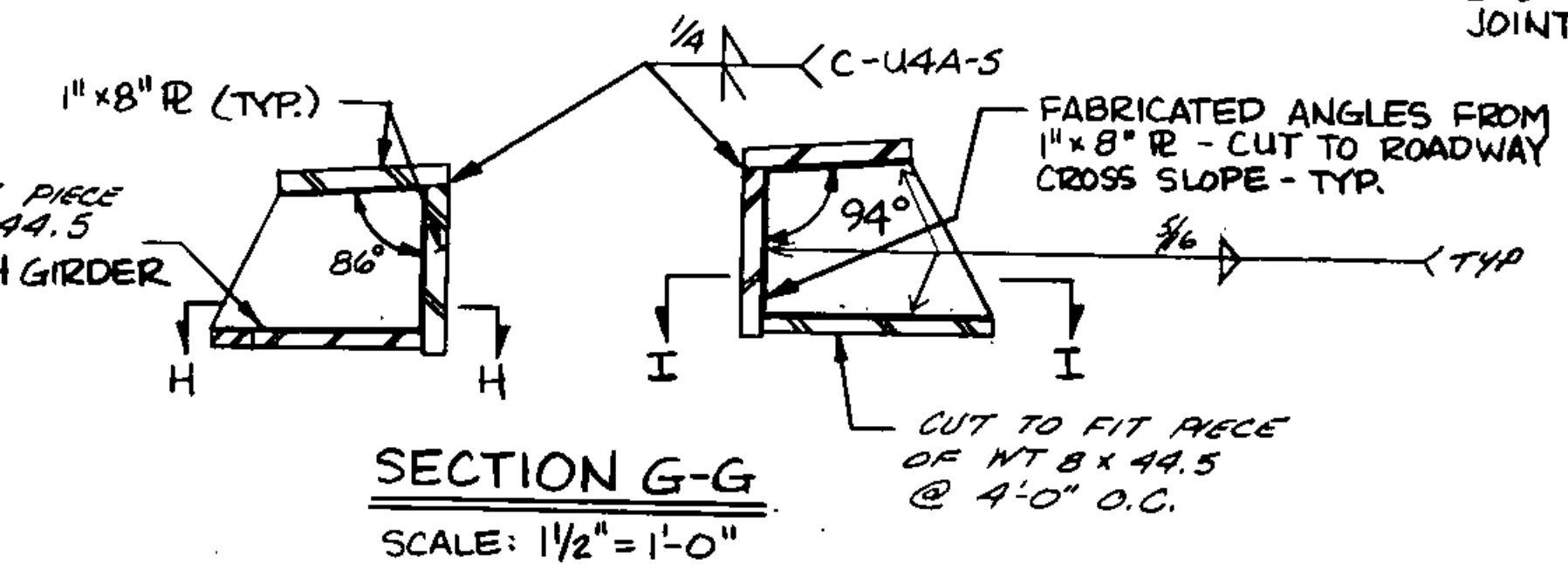


OPTIONAL FINGER PLATE LAYOUT
SCALE: 3/4" = 1'-0"

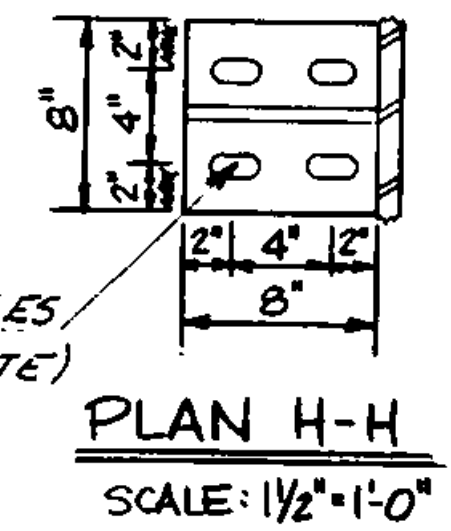
- NOTES:**
1. REQUIRED: ONE EACH - P1 THROUGH P8
 2. MAXIMUM LENGTH NOT TO EXCEED 13'-6"
 3. MINIMUM EDGE DISTANCE FROM ϵ 7/8" ϕ HOLES = 1/2"
 4. DISTANCE (X) FROM BEGINNING (OR END) OF PLATE TO FIRST (OR LAST) FINGER BETWEEN 6" MINIMUM AND 9" MAXIMUM.
 5. CUT PLATES FROM 2G" MATERIAL. ALL CUTS TO BE SMOOTH - REMOVE ALL BURRS.
 6. FINGER PLATES TO BE FORMED TO ROADWAY CROSS SLOPE PRIOR TO DRILLING SUPPORT ANGLES.



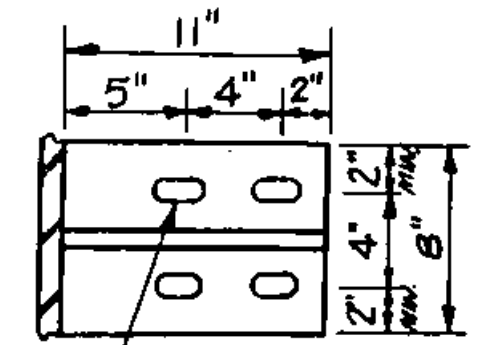
FINGER PLATE SUPPORT ANGLE PLAN
N.T.S.



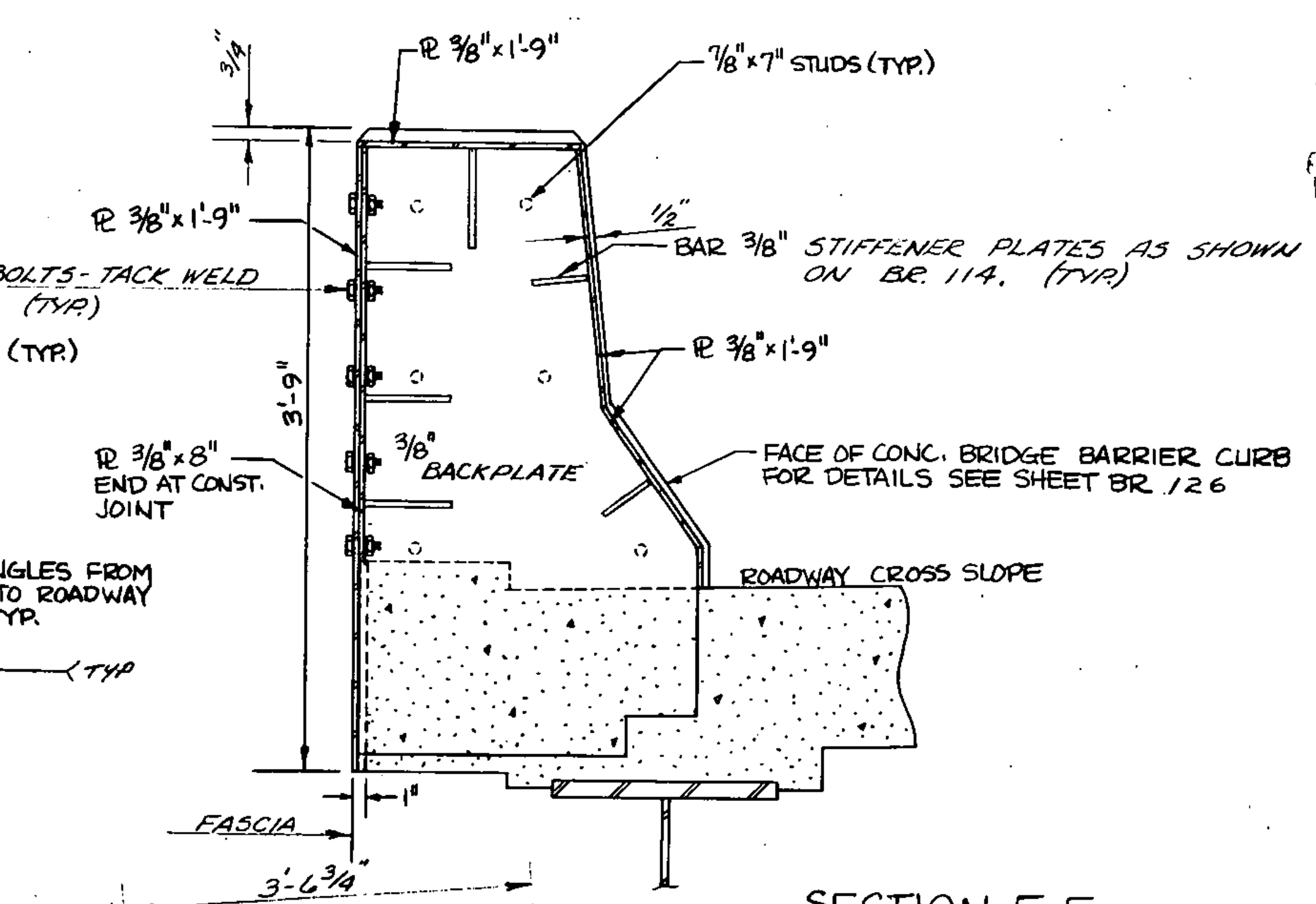
SECTION G-G
SCALE: 1/2" = 1'-0"



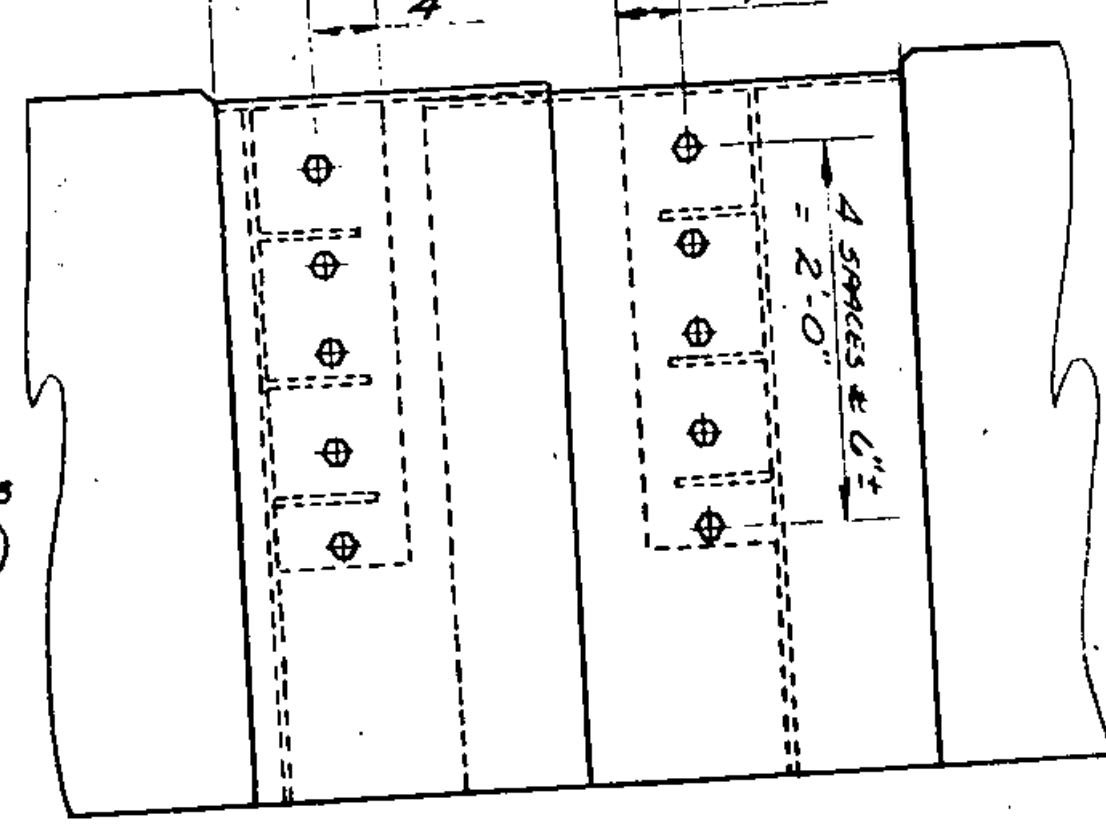
PLAN H-H
SCALE: 1/2" = 1'-0"



PLAN I-I
SCALE: 1/2" = 1'-0"



SECTION E-E
SCALE: 1/2" = 1'-0"



CURB PLATE ELEVATION & FASCIA
SCALE: 1" = 1'-0"

STATE OF VERMONT	
AGENCY OF TRANSPORTATION	
TOWN OF ST. JOHNSBURY	Bridge No. 1
HIGHWAY NO. I-91 NORTH CONNECTOR	Log Sta. 60+0
I-91 NORTH CONNECTOR OVER PASSUMPSIC RIVER	
EXPANSION JOINT DETAILS - ABUT E	
Designed by G.V. SPILAK	Drawn by G. KLINEFELTER
Checked by M. GARCIA date 10-87	Bridge Design Supervisor R.S. HAUPT date
PROJECT ST. JOHNSBURY	PROJECT NO. DP-FF041-1(10)
Bridge Sheet No. BR 116	Sheet 74 of 229