

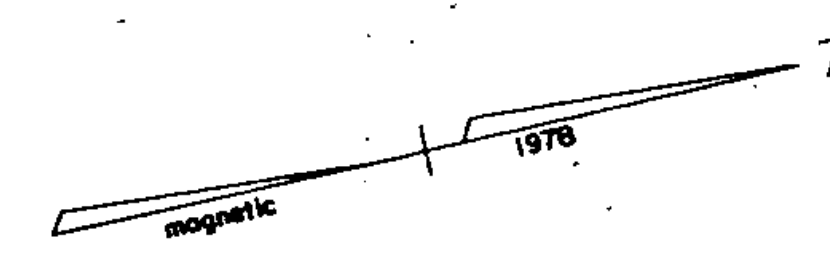
EROSION MATTING
ITEM 654.20
T.R. 27 15+00-18+50 LT

GUARDRAIL STD. ST BEAM
W/ WOOD POSTS, TYPE II
ITEM 621.28
62+42 - 62+79.5 RT
62+58 - 63+70.5 LT
RT
LT

Guard Rail Plank w/Wood Posts
T.H. 27 13+50 LT

Sand Borrow
63+00-64+00

Drilling & Blasting of
Solid Rock Subgrade
62+75 - 67+00



Note: The discontinued portion
of T.H. 27 is to be topped
seed, fertilized & mulch

Construct Drive
66+60 RT
18+65 LT T.H. 27

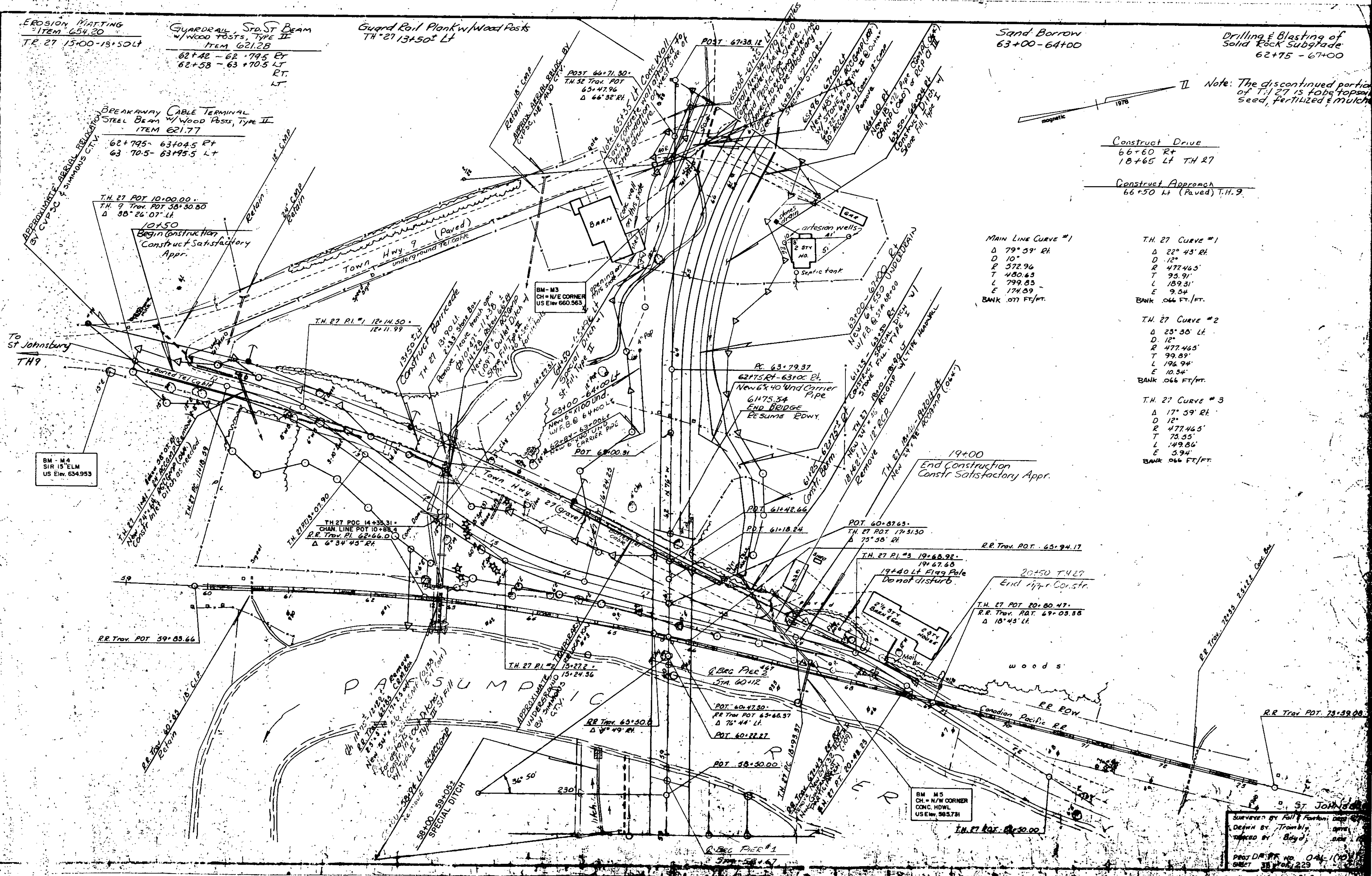
Construct Approach
66+50 LT (Paved) T.H. 9

MAIN LINE CURVE #1
Δ 79° 59' RT
D 10"
R 572.96
T 480.63
L 799.83
E 174.09
BANK .077 FT/FT.

T.H. 27 CURVE #1
Δ 22° 43' RT
D 12"
R 472.465
T 93.91
L 189.31
E 9.54
BANK .066 FT/FT.

T.H. 27 CURVE #2
Δ 23° 36' LT
D 12"
R 472.465
T 99.89
L 196.94
E 10.34
BANK .066 FT/FT.

T.H. 27 CURVE #3
Δ 17° 59' RT
D 12"
R 472.465
T 73.55
L 149.86
E 3.94
BANK .066 FT/FT.



BM - M4
SIR 15' ELM
US Elev. 634.953

BM - M5
CH - N/W CORNER
CONC. HDWL
US Elev. 585.731

Surveyed by Full & Farnham
DRAWN BY Trambly
CHECKED BY Boyd
PROJ. DR. NO. 046-110
SHEET 38 OF 229