

INDEX OF SHEETS

SHEET NO.	TITLE PAGE
1	TYPICAL SECTIONS
2	QUANTITY SHEET
3	SIGN SUMMARY SHEET
4	TRAFFIC CONTROL SHEETS
5	STATION/MILEPOST SHEET
6	E-1 FEDERAL AID CONST. IDENT. SIGNS 2/14/71
7	E-2 ROAD CONST. APPROACH SIGNS 12/14/71
8	E-4 ROAD CONST. SIGNS PAVING 12/14/71
9	E-6 ON PROJECT CONST. SIGNS 12/14/71
10	E-7 BARRICADES 12/14/71
11	E-9 BRIDGE MAINTENANCE APPROACH SIGNS 2/29/72
12	E-17 REGULATORY SIGNS 1/4/72
13	E-21 WARNING SIGNS 1/31/72

RECORD PLANS PAVEMENT AREA MATERIALS 249,316 S.Y.

BITUMINOUS SURFACE TREATMENT—HUMBLE—EVERETT, MA.  
 EMULSIFIED ASPHALT—NEW HAMPSHIRE BITUMIN CO.—BOSCAWEN, N.H.  
 BITUMINUS CONCRETE—L.M. PIKE (PLANT)—W. LEBANON, N.H.  
 METAL CULVERT PIPE—NEW ENGLAND METAL CULVERT CO.—WHITE RIVER JCT., VT.  
 BITUMINOUS CRACK FILLING—TRIRAM CORP.—FRAMINGHAM, MA.  
 SEED—S.T. GRISWOLD & CO., INC.—WILLISTON, VT.  
 TRAFFIC SIGNS—BARRE SIGN CO.—BARRE, VT.

CONTRACTOR  
 L.M. PIKE & SON—LACONIA, N.H.  
 RES. ENG.—WAYNE A. JARVIS.  
 INSPECTORS—E.J. WOOD, R.H. DUKE,  
 J.W.P. STODDARD, E.J. CORRIAN,  
 F. J. HALL, JR. & R. RUSSELL, JR.  
 RECORD PLANS—A.G. SPIDLE.

CONTACT  
 DATED—JUNE 20, 1972.  
 STARTED—JUNE 19, 1972.  
 COMPLETED—AUGUST 1, 1972.  
 ACCEPTED—AUGUST 1, 1972.

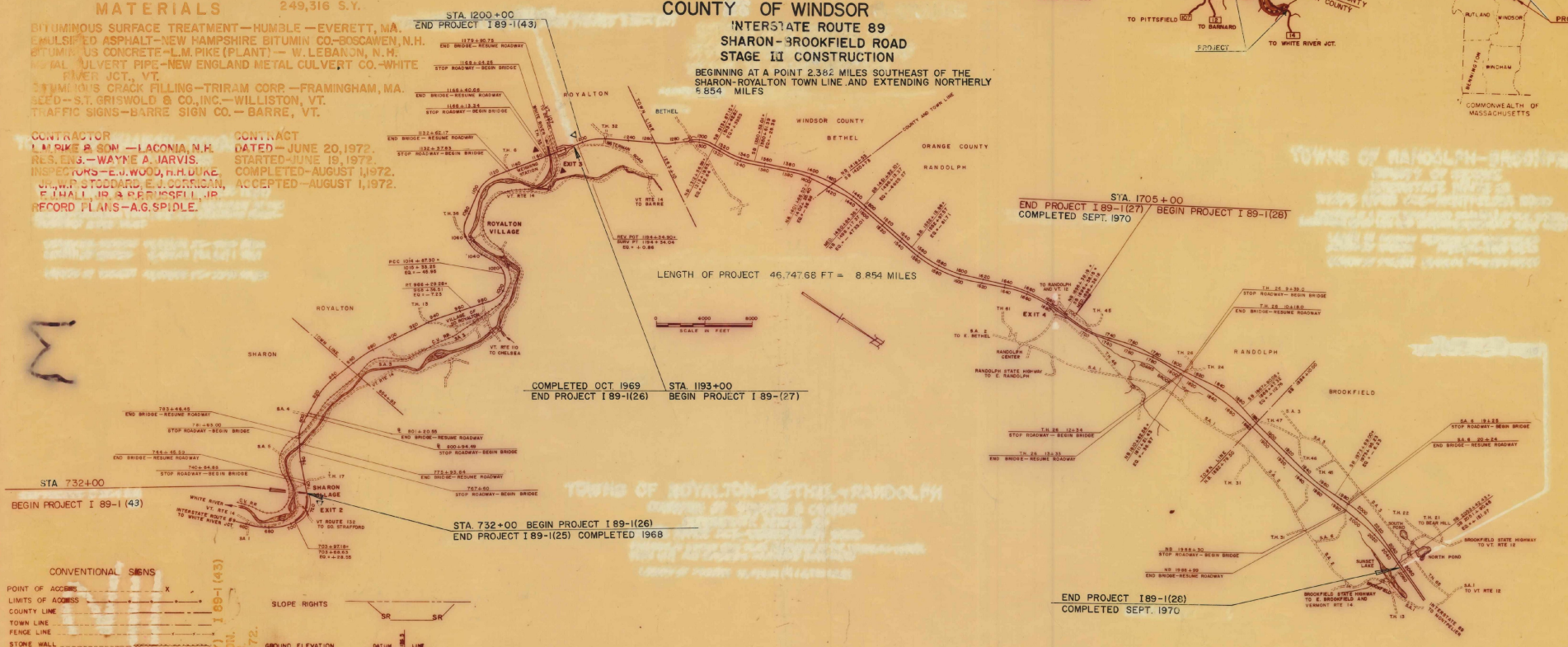
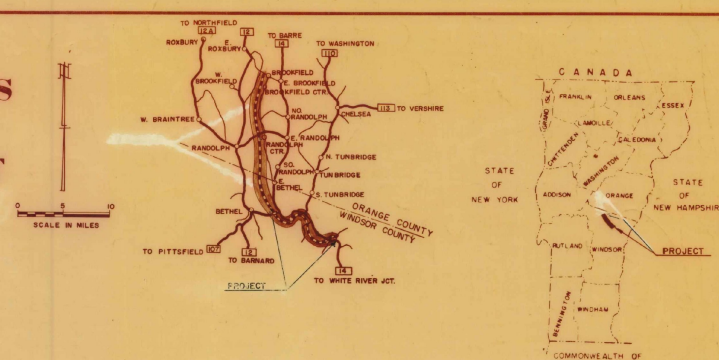
STATE OF VERMONT  
 DEPARTMENT OF HIGHWAYS  
 INTERSTATE PROJECT  
**Proposed Improvement**  
 TOWNS OF SHARON—ROYALTON  
 COUNTY OF WINDSOR

COUNTY OF WINDSOR

INTERSTATE ROUTE 89  
 SHARON—BROOKFIELD ROAD  
 STAGE II CONSTRUCTION

BEGINNING AT A POINT 2.362 MILES SOUTHEAST OF THE SHARON-ROYALTON TOWN LINE AND EXTENDING NORTHERLY 8.554 MILES

LENGTH OF PROJECT 46,747.68 FT = 8.854 MILES



CONVENTIONAL SIGNS

POINT OF ACCESS	X
LIMITS OF ACCESS	X
COUNTY LINE	---
TOWN LINE	---
FENCE LINE	---
STONE WALL	---
UNFENCED PROPERTY	---
GUARD RAIL	---
TRAVELED WAY	---
RAILROAD	---
RETAINING WALL	---
CENTER LINE	---
SURVEY LINE	---
CULVERT	---
DROP INLET	---
TROLLEY POLE	---
POWER POLE	---
TELEPHONE POLE	---
TREES	---
HEDGE	---
F.A. CONSTRUCTION IDENTIFICATION SIGNS	---

FOR RIGHT OF WAY DETAILS, SEE RIGHT OF WAY PLANS FOR THESE PROJECTS

THESE PLANS ARE SUBJECT TO SUCH ENGINEERING CHANGES AS MAY BE REQUIRED BY THE FEDERAL HIGHWAY ADMINISTRATION OR THE CHIEF ENGINEER.

CONSTRUCTION IS TO BE CARRIED ON IN ACCORDANCE WITH THESE PLANS AND THE STANDARD SPECIFICATIONS FOR HIGHWAY AND BRIDGE CONSTRUCTION DATED JAN. 3, 1972 AS APPROVED BY THE FEDERAL HIGHWAY ADMINISTRATION ON DECEMBER 28, 1971 INCLUDING ALL SUBSEQUENT APPROVED REVISIONS AND SUCH REVISED SPECIFICATIONS AND SPECIAL PROVISIONS AS ARE INCORPORATED IN THESE PLANS.

APPROVED: *[Signature]*  
 DATE: 4/24/72  
 SUBMITTED BY ORDER OF THE STATE HIGHWAY BOARD

DEPARTMENT OF TRANSPORTATION FEDERAL HIGHWAY ADMINISTRATION	
APPROVED	DATE
DIVISION ENGINEER	DATE
PROJECT I NO. 89-1 (43)	
SHEET 1 OF 16 SHEETS	

# TYPICAL SECTIONS

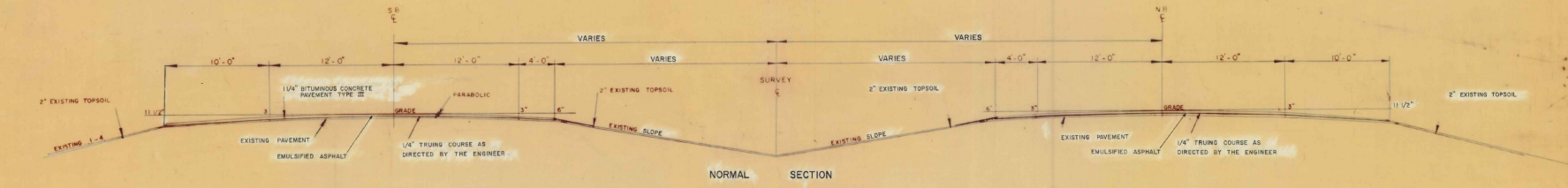
1/4" BITUMINOUS CONCRETE PAVEMENT, TYPE III (\*1/4" FOR TOTAL THICKNESS)  
 W/ TRUING COURSE - 1/4" AVERAGE DEPTH  
 (FOR SHOULDER COMPOSITION SEE SKETCH AT LOWER RIGHT)  
 EMULSIFIED ASPHALT, ITEM 404.65, ROADWAY ONLY

CONSTRUCTED AS DESIGNED

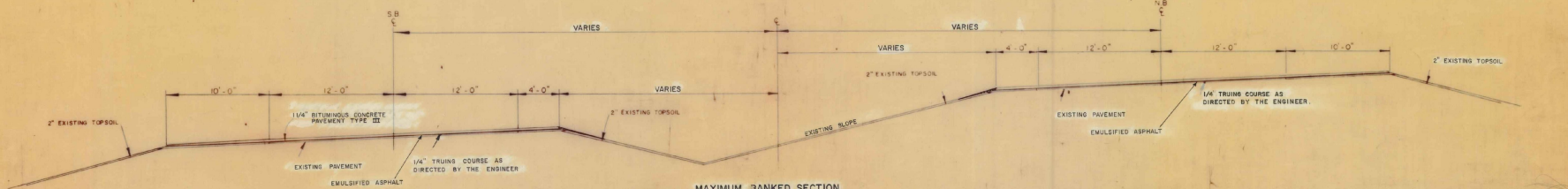
PERMISSIBLE TOLERANCES APPLY TO THICKNESS ONLY

SEEDING, ITEM 611	% WT.	LBS/ACRE	NAME	PURITY %	GERM %
41.67	25		CREeping RED FESCUE	98	85
25.00	15		ALFALFA	99	85
8.33	5		RED TOP	92	85
6.67	10		PERENNIAL RYE GRASS	95	90
8.33	5		BIRDFOOT TREFOL (VAR. EMPIRE)	98	80

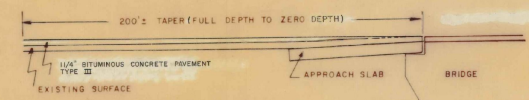
10000' 60 LBS PER ACRE  
 THE SEED MIXTURE SHALL NOT HAVE A WEED CONTENT EXCEEDING 0.40% BY WEIGHT AND SHALL BE FREE FROM ALL NOXIOUS WEED SEED.



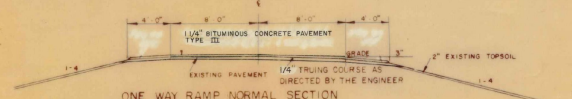
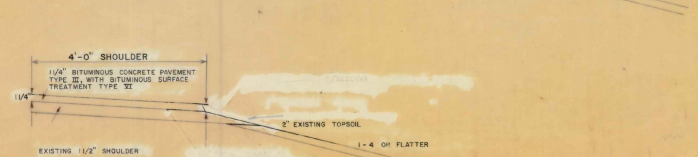
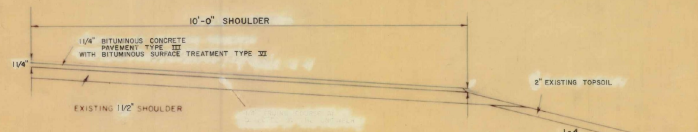
NORMAL SECTION



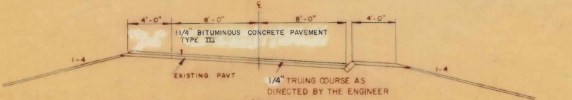
MAXIMUM BANKED SECTION



SUGGESTED BRIDGE TRANSITION



ONE WAY RAMP NORMAL SECTION



ONE WAY RAMP BANKED SECTION WITH SLOPE EDGING

SHARON-ROYALTON  
 SURVEYED BY \_\_\_\_\_ DATE \_\_\_\_\_  
 DRAWN BY \_\_\_\_\_ DATE \_\_\_\_\_  
 TRACED BY \_\_\_\_\_ DATE \_\_\_\_\_  
 STAGE III CONSTRUCTION  
 PROJ. I NO. 89-1(43)  
 SHEET 2 OF 16



# TRAFFIC CONTROL SIGNS SUMMARY SHEET

IDENTIFICATION	NUMBER OF SIGNS	SIZE		TEXT	SIGN COLOR		TOTAL SIGN AREA
		WIDTH	HEIGHT		TEXT	BACK-GROUND	
W-1	4	48"	48"		BLACK	ORANGE	64 1/2
W-2	2	48"	48"		BLACK	ORANGE	32 1/2
W-3	2	48"	48"		BLACK	ORANGE	32 1/2
W-4	4	48"	48"		BLACK	ORANGE	64 1/2
W-5	1	48"	48"		BLACK	ORANGE	16 1/2
W-6	2	48"	48"		BLACK	ORANGE	32 1/2
W-7	4	48"	48"		BLACK	ORANGE	64 1/2
W-8	4	48"	48"		BLACK	ORANGE	64 1/2
W-9	6	48"	48"		BLACK	ORANGE	96 1/2
W-9A	6	24"	18"		BLACK	ORANGE	18 1/2

COLUMN TOTAL = 482 1/2

IDENTIFICATION	NUMBER OF SIGNS	SIZE		TEXT	SIGN COLOR		TOTAL SIGN AREA
		WIDTH	HEIGHT		TEXT	BACK-GROUND	
W-10	1	48"	48"		BLACK	ORANGE	16 1/2
W-11	3	48"	48"		BLACK	ORANGE	48 1/2
W-12	2	24"	24"		BLACK	ORANGE	8 1/2
W-13	1	30"	30"		BLACK	ORANGE	6.3 1/2
W-14	1	30"	30"		BLACK	ORANGE	6.3 1/2
W-15	1	30"	30"		BLACK	ORANGE	6.3 1/2
W-16	4	48"	24"		BLACK	ORANGE	32 1/2
W-17	4	48"	24"		BLACK	ORANGE	32 1/2
R-1	4	30"	30"		WHITE	RED	—
R-2	5	24"	30"		BLACK	WHITE	—
G-1	2	60"	24"		BLACK	ORANGE	20 1/2

COLUMN TOTAL = 174.9 1/2

IDENTIFICATION	NUMBER OF SIGNS	SIZE		TEXT	SIGN COLOR		TOTAL SIGN AREA
		WIDTH	HEIGHT		TEXT	BACK-GROUND	
G-2	2	12"	24"		BLACK	WHITE	—
G-3	2	24"	24"		BLACK	WHITE	—
G-4	3	15"	21"		BLACK	WHITE	—
G-5	1	15"	21"		BLACK	WHITE	—
G-6	2	12"	24"		WHITE	BLUE	—
G-7	1	12"	24"		WHITE	BLUE	—
G-8	3	24"	24"		WHITE	BLUE	—
G-9	3	15"	21"		WHITE	BLUE	—

COLUMN TOTAL =

**IDENTIFICATION OF TRAFFIC SIGNS**  
Traffic signs are identified on these plans by a number prefixed by a letter which indicates the following general classifications:

- G - Other guide signs
- R - Regulatory signs
- W - Warning signs

Traffic signs may be mounted on a portable support. They will be positioned in accordance with plan sheets 5,6,8,7 (Typical display for traffic signs)

The background and text on all traffic signs may be of non-reflectORIZED character and will be displayed only during daylight hours.

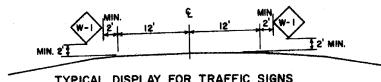
Traffic Control signs to be furnished and installed (unless otherwise indicated) as Section 641, Traffic Control.

SHARON-ROYALTON

**SECTION 641**  
**TRAFFIC CONTROL SIGNS**  
**SUMMARY SHEET**

PREPARED BY: RFS DATE: 11/17/71  
CHECKED BY: DATE: 4/7/72  
TRACED BY: DZG DATE: 4/7/72  
STAGE 3 CONSTRUCTION  
PROJ. 1 NO. 89-1(43)  
SHEET 4 OF 16

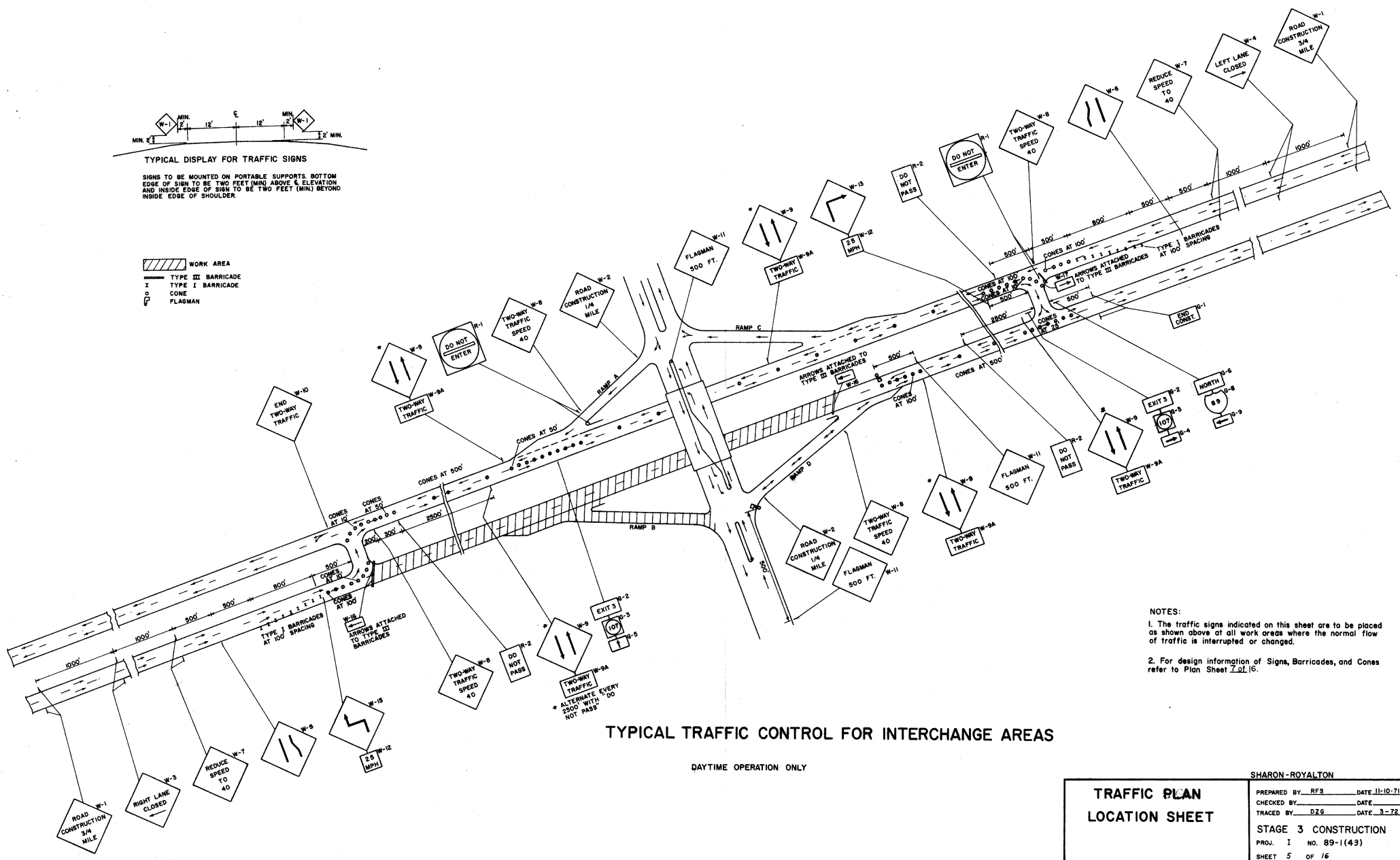
\* These signs will be furnished by the Vermont Highway Department. The necessary mounting supports for display of these signs will be furnished by the Contractor.



TYPICAL DISPLAY FOR TRAFFIC SIGNS

SIGNS TO BE MOUNTED ON PORTABLE SUPPORTS. BOTTOM EDGE OF SIGN TO BE TWO FEET (MIN) ABOVE ELEVATION AND INSIDE EDGE OF SIGN TO BE TWO FEET (MIN) BEYOND INSIDE EDGE OF SHOULDER.

- WORK AREA
- TYPE III BARRICADE
- TYPE I BARRICADE
- CONE
- FLAGMAN

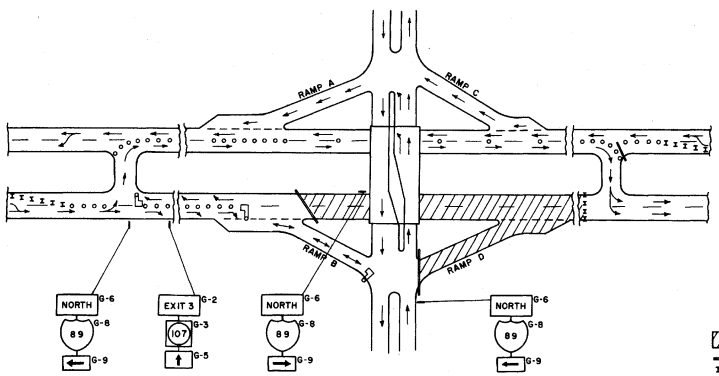
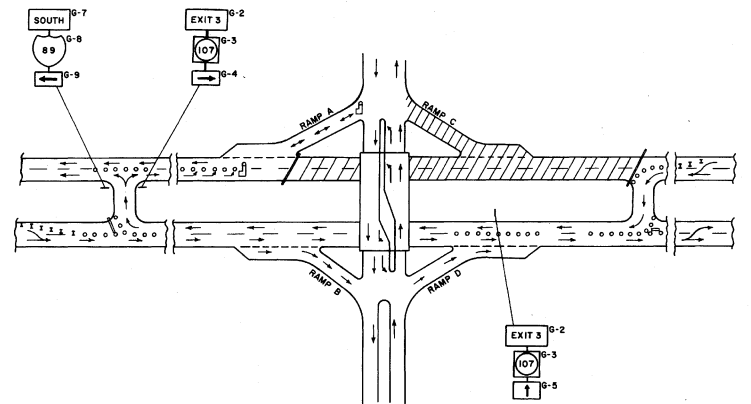
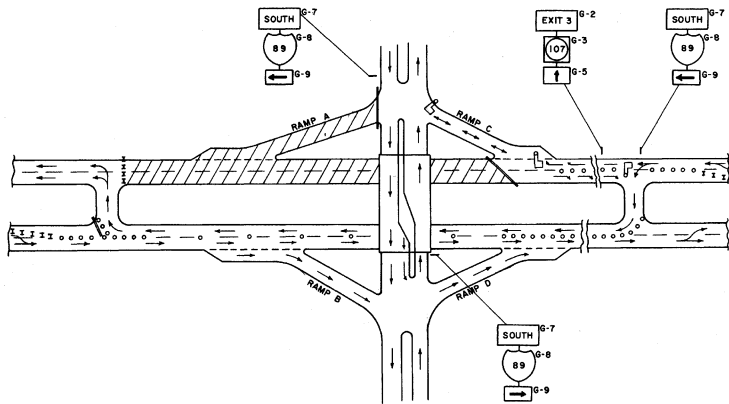


TYPICAL TRAFFIC CONTROL FOR INTERCHANGE AREAS

DAYTIME OPERATION ONLY

- NOTES:
- The traffic signs indicated on this sheet are to be placed as shown above at all work areas where the normal flow of traffic is interrupted or changed.
  - For design information of Signs, Barricades, and Cones refer to Plan Sheet 7.01.16.

<b>TRAFFIC PLAN LOCATION SHEET</b>		SHARON-ROYALTON	
		PREPARED BY: RFS	DATE: 11-10-71
CHECKED BY: _____	DATE: _____	TRACED BY: DZG	DATE: 3-72
STAGE 3 CONSTRUCTION		PRJ. 1 NO. 89-1(43)	
SHEET 5 OF 16			



- WORK AREA
- TYPE III BARRICADE
- TYPE I BARRICADE
- CONE
- FLAGMAN

- NOTES:
1. The traffic signs indicated on this sheet are to be placed as shown above at all work areas where the normal flow of traffic is interrupted or changed.
  2. For design information of Signs, Barricades, and Cones refer to Plan Sheet Z07.16.

TYPICAL TRAFFIC CONTROL FOR INTERCHANGE AREAS

DAYTIME OPERATION ONLY

<b>TRAFFIC PLAN LOCATION SHEET</b>	PREPARED BY <u>RFS</u> DATE <u>11-10-71</u>
	CHECKED BY _____ DATE _____
	TRACED BY <u>DZG</u> DATE <u>3-72</u>
	STAGE <u>3</u> CONSTRUCTION
	PROJ. I NO. <u>89-1(43)</u>
SHEET <u>6</u> OF <u>16</u>	



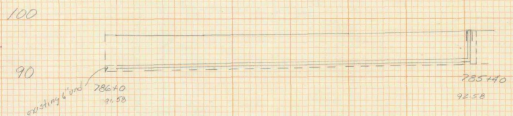
SB 784165 - 785455 Lt  
6' x 60' und.

Sta	Dist	Depth	Under 5'	Over 5'
			Vol	Vol
784175	Buff	5.2	16.7	0.5
784199		2.4	15.5	1.9
785127		3.0	20.4	4.6
785157		3.6	22.9	5.9
	Buff	2.0	19.0	5.0

56.8  
16.9  
75.7 C.Y. ✓ AR 7-31-76

Computed by W. Stoddard 7/18/72

Summary



NB 785140 - 78610 Rt  
60' x 60' und.

Sta	Dist	Depth	Under 5'	Over 5'
			Vol	Vol
785158	Buff	5.8	19.9	2.2
785160		5.7	19.5	1.9
785185		7.1	22.2	5.8
786105		6.2	18.1	8.1

Total  
48.2  
16.0  
58.2 C.Y.

Computed by W. Stoddard 7/18/72

✓ AR 7-31-76

Drainage Sheet 1



\*

1972

Sharon-Royalton

I-89-1(43)

1972