

PROJECT

BEGIN RELINQUISHMENT NO. III
END MAINT. AGREE. AREA NO. 1
SB 64:3+50

END RELINQUISHMENT NO. III
TR 57 63+50

BEGIN RELINQUISHMENT NO. I
TR 58 10+70

END RELINQUISHMENT NO. I
TR 58 13+47

END RELINQUISHMENT NO. IV
BEGIN MAINT. AGREE. AREA NO. 2
TR 44 6+97

BEGIN RELINQUISHMENT NO. IV
TR 44 0+50

SB 6405+20 LT.
BEGIN R.O.W. PROJECT
I91-2(21) SECT. I
Q1091-2(47) SECT. I

BEGIN MAINT. AGREE. AREA NO. 1
END RELINQUISHMENT NO. II
NB 6414+54

BEGIN RELINQUISHMENT NO. II
TR 57 46+50

NB STA 6405+00.00
B STA 6405+00.00
RAMP STA 15+91.14
RAMP STA 15+73.04
PROJECT I-91-2(21)
PROJECT I-91-2(47)

TOWNS OF BARNET-WATERFORD - ST. JOHNSBURY COUNTY OF CALEDONIA INTERSTATE ROUTE 91 BARNET - ST. JOHNSBURY R.O.W. PLANS

LENGTH OF PROJECT 42,413.42 FEET = 8.032 MILES

END MAINT. AGREE. AREA NO. 3
BEGIN RELINQUISHMENT NO. VI
TR 12 13+80

END RELINQUISHMENT NO. VI
TR 12 19+50

SB 6559+52 200' Lt
BEGIN R.O.W. PROJECT
I91-2(21) SECTION II

BEGIN RELINQUISHMENT NO. VII
TR 12 26+00

END RELINQUISHMENT NO. VII
BEGIN MAINT. AGREE. AREA NO. 4
TR 12 36+61

END MAINT. AGREE. AREA NO. 4
BEGIN RELINQUISHMENT NO. VIII
TR 12 40+74

END RELINQUISHMENT NO. VIII
TR 12 69+50

BEGIN RELINQUISHMENT NO. IX
SB 6668+95 LT.

END RELINQUISHMENT NO. IX
SB 6670+58 LT.

BEGIN MAINT. AGREE. AREA NO. 5
SB 6730+54 LT.

NB 6566+19 RT.
END R.O.W. PROJECT
I91-2(21) SECT. I
Q1091-2(47) SECT. I

END RELINQUISHMENT NO. III
SB 6800+50 LT.

BEGIN RELINQUISHMENT NO. II
TR 36 59+00

END RELINQUISHMENT NO. II
SB 6786+00 LT.

BEGIN RELINQUISHMENT NO. III
SB 6794+88 LT.

BEGIN RELINQUISHMENT NO. IV
SB 6809+09

END RELINQUISHMENT NO. IV
BEGIN RELINQUISHMENT NO. I
NB 6812+09 LT.

END RELINQUISHMENT NO. I
BEGIN MAINT. AGREE. AREA NO. 1
TR 77 10+69

NB 6830+10 RT.

END R.O.W. PROJECT
I91-2(21)
SECTION II

END RELINQUISHMENT NO. II
TR 77 20+63

END RELINQUISHMENT NO. V
BEGIN MAINT. AGREE. AREA NO. 3
TR 12 7+86

BEGIN RELINQUISHMENT NO. V
TR 12 0+00

END MAINT. AGREE. AREA NO. 5
BEGIN MAINT. AGREE. AREA NO. 1
SB 6732+18 RT.

END MAINT. AGREE. AREA NO. 1
NB 6733+20 RT.

END MAINT. AGREE. AREA NO. 2
TR 44 12+00

END RELINQUISHMENT NO. I
TR 27 49+50

BEGIN RELINQUISHMENT NO. V
TR 12 4+50

END RELINQUISHMENT NO. V
BEGIN RELINQUISHMENT NO. I
TR 12 32+07

END MAINT. AGREE. AREA NO. 1
BEGIN RELINQUISHMENT NO. II
TR 77 16+02

SECTION I

DIRECTOR, R.O.W.

01/30/72

SECTION II

CHIEF ENGINEER

01/30/72

SECTION III

DIRECTOR, R.O.W.

01/30/72

SECTION IV

CHIEF ENGINEER

01/30/72

01 Q1 2(47) SECT. I

01 Q1 2(47) SECT. I

01/30/72

Prepared and Recommended by
Clarkson, Clough, & York
Consulting Engineers
Albany, New York
Herald J. Clough 2320 V.P.E. Lic. No. Date

These Right of Way plans are subject to such engineering changes as may be required by the Federal Highway Administration or the Chief Engineer.
Construction is to be carried on in accordance with these plans and the standard specifications for highway construction approved by the Federal Highway Administration on December 22, 1971 for use on the 2.5 mile long project. Subsequent revisions and special provisions are incorporated in these plans.

SB 6405+20 282' LT
 BEGIN ROW PROJECT
 I-91-2(21) SECT. I
 Q1091-2(47) SECT. I

S.B. STA. 6294+25.00
 RAMP B STA. 15+32.04 P.C.
 S.B. STA. 339+36.34 E.C.

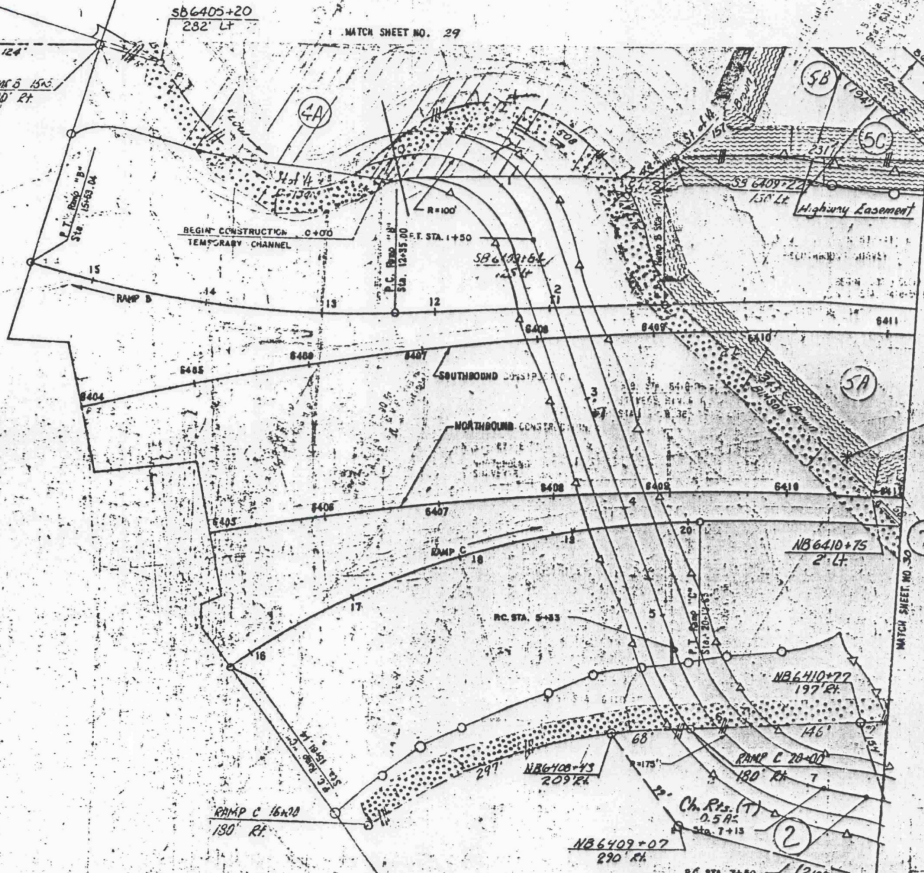
END PROJECT I-91-2(16) CONTRACT #4
 BEGIN PROJECT I-91-2(21) CONTRACT #1

SB 6405+20
 232' LT

MATCH SHEET NO. 29

Ramp B 16+70
 163' Rt
 Stevens River Abk. 100
 140' Rt

RAMP B 15+50
 120' Rt



END PROJECT I-91-2(16) CONTRACT #4
 BEGIN PROJECT I-91-2(21) CONTRACT #1

N.E. STA. 6405+00.00
 RAMP C STA. 15+31.14 P.C.
 N.E. STA. 335+72.34 E.C.

190A
 190C

5B

5C

5A

7B

Connecticut River
 Independent Order
 Fellows A. Falero

STATE OF VERMONT
 DEPARTMENT OF HIGHWAYS

TOWN OF BARNET - 5th Jct
 ROUTE NO. 1

Q1091-2(47)
 PROJECT NO. 1-91-2(21)
 SHEET 28 OF 159

ALL DRIVES AS INDICATED ON PLANS ARE SUBJECT TO PERMITS PURSUANT TO TITLE 19, SECTION 43, V.S.A.



(91)

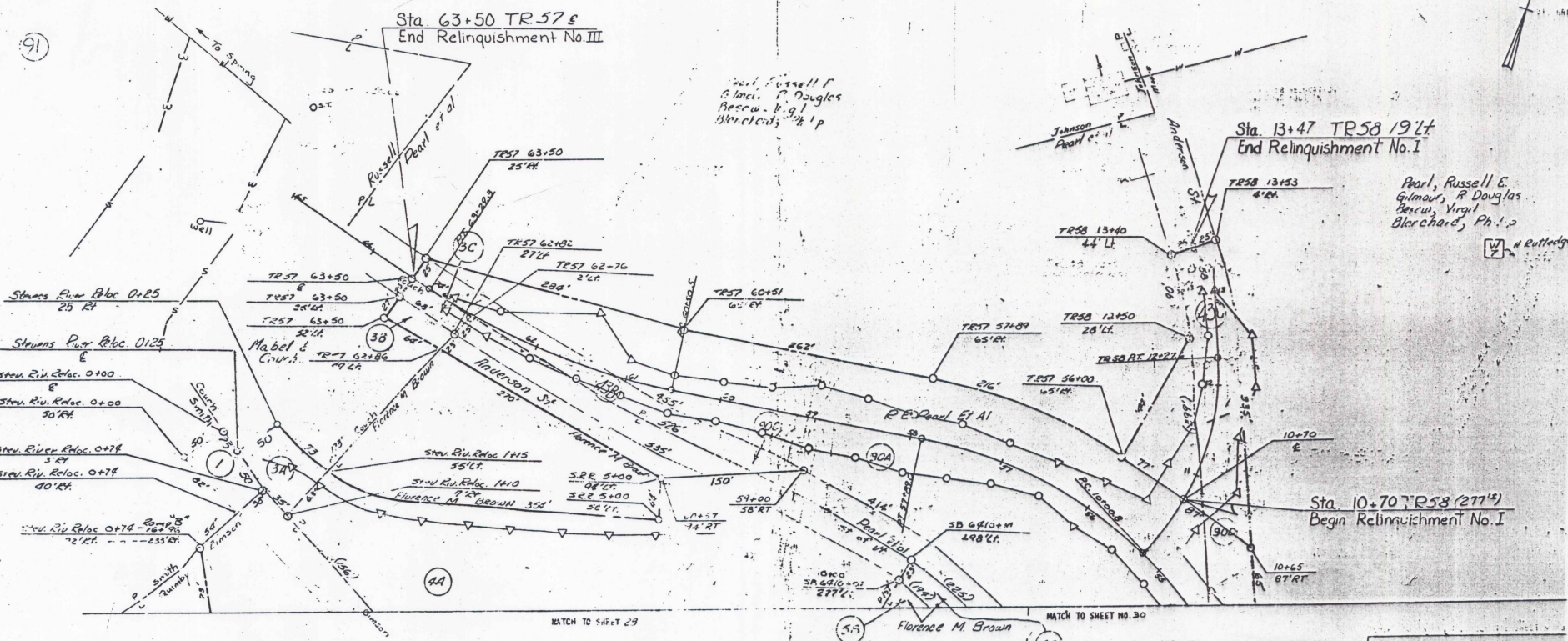
Sta 63+50 TR 57 E
End Relinquishment No. III

Sta 13+47 TR 58 / 9 L
End Relinquishment No. I

Paul, Russell E.
Gilmour, R Douglas
Bercow, V. G. I
Blanchard, Ph. I. J

W. A. Rutledge

Sta 10+70 TR 58 (277) S
Begin Relinquishment No. I

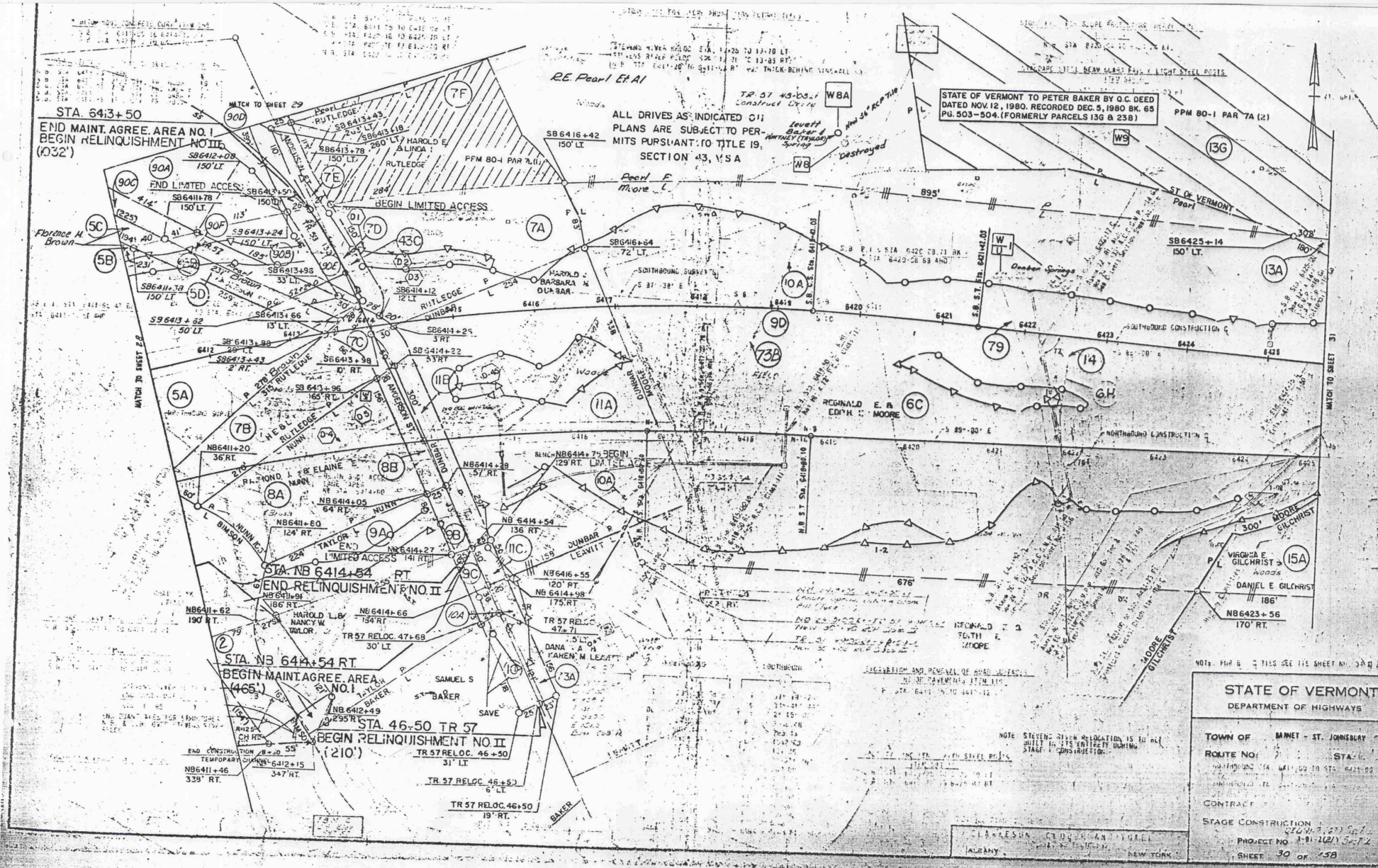


MATCH TO SHEET 29

MATCH TO SHEET NO. 30

STATE OF VERMONT DEPARTMENT OF HIGHWAY	
TOWN OF	BARNET - ST. JOHNSBUR
ROUTE NO.	STA
CONTRACT	
STATE CONSTRUCTION	
PROJECT NO. 1-91-2(21)	
SHEET 29 OF 158	

ALBANY NEW YORK



P.E. Pearl F. Moore

ALL DRIVES AS INDICATED ON PLANS ARE SUBJECT TO PERMITS PURSUANT TO TITLE 19, SECTION 43, V.S.A.

STATE OF VERMONT TO PETER BAKER BY G.C. DEED DATED NOV. 12, 1980, RECORDED DEC. 9, 1980 BK. 65 PG. 503-504. (FORMERLY PARCELS 13G & 23B)

NOTES: FIG. B. OF THIS SEE THE SHEET NO. 30 OF B.

STATE OF VERMONT
DEPARTMENT OF HIGHWAYS

TOWN OF MIMET - ST. JOHNSBURY
ROUTE NO. 104
STATIONING FROM STA. 46+50 TO STA. 54+30
CONTRACT NO. 104-104-104-104
STAGE CONSTRUCTION
PROJECT NO. 104-104-104-104
SHEET 30 OF 38

NOTE: STRENGTHENING AND REPAIRS TO ALL EXISTING PAVEMENTS DURING STAGE I CONSTRUCTION.

CLARENCE A. GILCHRIST
ALBANY, NEW YORK

*1970
Row.
ALL AB

I 91-2 (47)

Vermont Agency of
Transportation
PHASE 1-INTERSTATE
#122302-01
 INITIALS
HANGER 594 ONE

Missing Sheets Copies From Row
SF.