

INDEX OF SHEETS

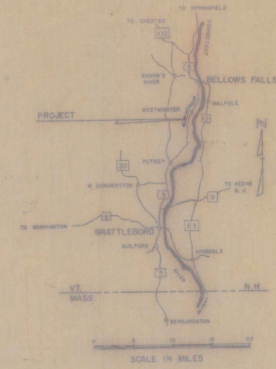
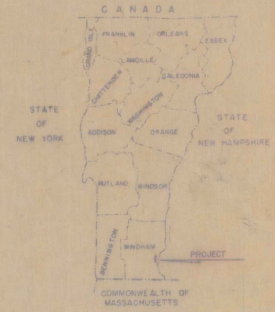
1. Title Page
2. Quantity Sheet
3. Layout
4. Street Lighting, Item 70
- 5-7. Cross sections
8. Profile of Water Line
- 9-16. Building Plans
16. Plumbing Plans
17. Electrical Plans
18. Heating and Ventilating Plans

STATE OF VERMONT  
DEPARTMENT OF HIGHWAYS

PROPOSED IMPROVEMENT

TOWN OF WESTMINSTER  
COUNTY OF WINDHAM  
BRATTLEBORO-BELLOWS FALLS ROAD

FED. ROAD DISTRICT NO.	STATE	PROJECT NUMBER	SHEET NO.	TOTAL SHEETS
1	VT	100-100-100	1	1



BEGINNING AT A POINT 1120 FEET NORTHERLY OF THE PUTNEY-WESTMINSTER TOWN LINE AND EXTENDING NORTHERLY 1000 FEET.

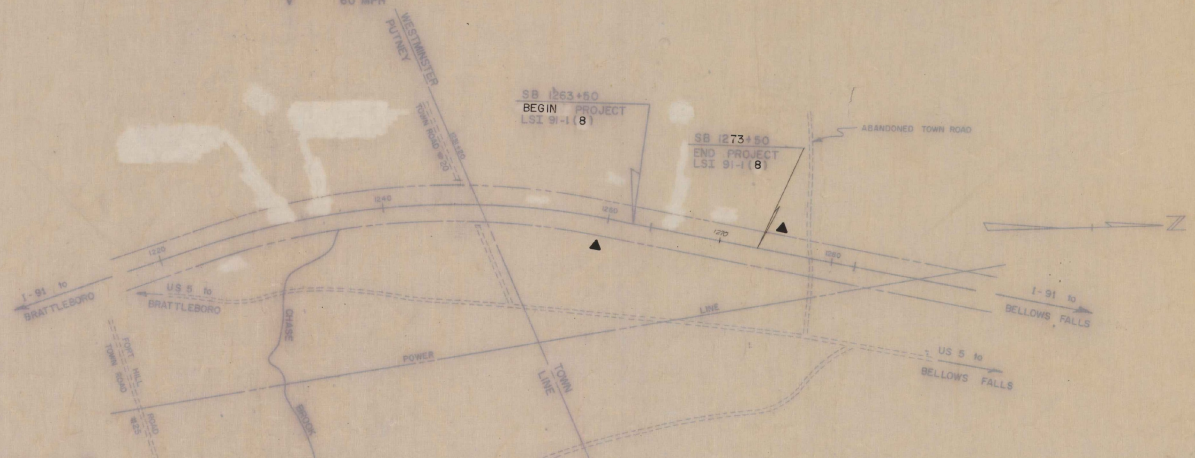
LENGTH OF PROJECT 1000 FT. = 0.189 MILES

ADT 1965	3200
ADT 1985	7500
DHV 1985	1160
D	63
T	6
V	60 MPH

PROJECT NAME & NUMBER	TYPE
WESTMINSTER LSI 91-1(8)	BUILDING
RECORD PLANS - MATERIALS	
JOHN BLANCHARD EXCAVATION, WALLINGFORD, VT.	
LARRY A. FOLEY CONCRETE, PERKINSVILLE, VT.	
STROMGREN PLUMBING & HEATING CO., KEENE, N.H.	
FRANK T. CODY ELECTRICAL, HANOVER, N.H.	
AL. MELANSON CO. INCORPORATED, KEENE, N.H.	
EXEL PAINTING CO., KEENE, N.H.	
SIMMONDS SALES & SERVICE, SPRINGFIELD, MASS.	
PRIMROSE GLASS COMPANY, KEENE, N.H.	
NEW ENGLAND DECK & FLOORING, NEEDHAM HEIGHTS, MASS.	
PUTNEY NURSERIES, PUTNEY, VERMONT	

CONTRACTOR: CONNECTICUT VALLEY CONSTRUCTION, INCORPORATED  
 SUPERVISOR: A.J. REINHART  
 PROJECT ENGINEER: L.R. MASURE

The specific location of each tree and shrub will be made by the State Landscape Engineer in the field prior to any planting being performed by the Contractor. Such locations will be in accordance with the 1959 "Guide for Showing Roadside Improvements on Project Plans", the 1961 A.A.S.H.O. Publication "A Policy on Landscape Development for the National System of Interstate and Defense Highways", and any other supplementary location requirements which are now or may become effective.



FEDERAL-AID IDENTIFICATION SIGN

SCALES

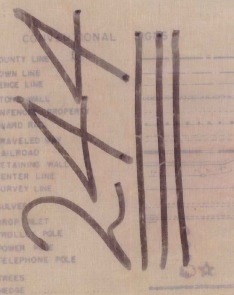
TITLE	1" = 500'
TYPICAL PLAN	1" = 100'
PROFILE	1" = 10'
HORIZONTAL CROSS-SECTIONS	1" = 10'
VERTICAL CROSS-SECTIONS	1" = 10'

THESE PLANS ARE SUBJECT TO SUCH REVISIONS AS MAY BE REQUIRED BY THE BUREAU OF PUBLIC ROADS OR THE COMMISSIONER OF HIGHWAYS.  
 CONSTRUCTION IS TO BE CARRIED ON IN ACCORDANCE WITH THESE PLANS AND THE STANDARD SPECIFICATIONS FOR HIGHWAY AND BRIDGE CONSTRUCTION DATED APRIL, 1964, AS APPROVED BY THE BUREAU OF PUBLIC ROADS AND HIGHWAYS OR, WHEN REQUIRED BY ALL SUBSEQUENT APPROVED REVISIONS AND SUCH REVISIONS SPECIFICATIONS AND SPECIAL PROVISIONS AS ARE INCORPORATED IN THESE PLANS.

WESTMINSTER  
DEPARTMENT OF TRANSPORTATION  
BUREAU OF PUBLIC ROADS

APPROVED	DIVISION ENGINEER	DATE
PROJECT L.S.T. NO. 91-1(8)		
SHEET 1 OF 16 SHEETS		

APPROVED: <i>W. Goodheart</i> DATE: 9/17/69	APPROVED: <i>D. Han</i> DATE: 9/15/69	APPROVED: <i>B. O. Mason</i> DATE: 9/19/69	APPROVED: <i>E. J. Stebbins</i> DATE: 9/22/69	APPROVED: <i>W. J. ...</i> DATE: 9/22/69
------------------------------------------------	------------------------------------------	-----------------------------------------------	--------------------------------------------------	---------------------------------------------



MUNICIPALITY	WESTMINSTER
PROJECT NUMBER	LSI 91-1(8)
TYPE	LANDSCAPING (BUILDING)
CONTRACTOR	CONNECTICUT VALLEY CONSTRUCTION, INC.
LOCATION	SPRINGFIELD, VERMONT
SECTION	1-91
YEAR BY	70

- INDEX OF SHEETS
1. Title Page
  2. Quantity Sheet
  3. Layout
  4. Street Lighting, Item 706
  - 5-7. Cross sections
  8. Profile of Water Line
  - 9-16. Building Plans
  17. Plumbing Plans
  18. Electrical Plans
  19. Heating and Ventilating Plans

STATE OF VERMONT  
DEPARTMENT OF HIGHWAYS

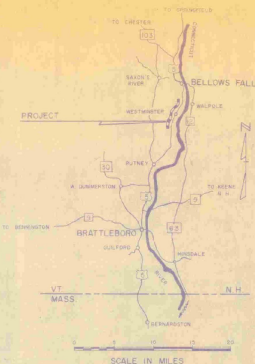
PROPOSED IMPROVEMENT

TOWN OF WESTMINSTER  
COUNTY OF WINDHAM  
BRATTLEBORO-BELLOWS FALLS ROAD

BEGINNING AT A POINT 1120 FEET NORTHERLY OF THE  
PUTNEY-WESTMINSTER TOWN LINE AND EXTENDING  
NORTHERLY 1.00 FEET.

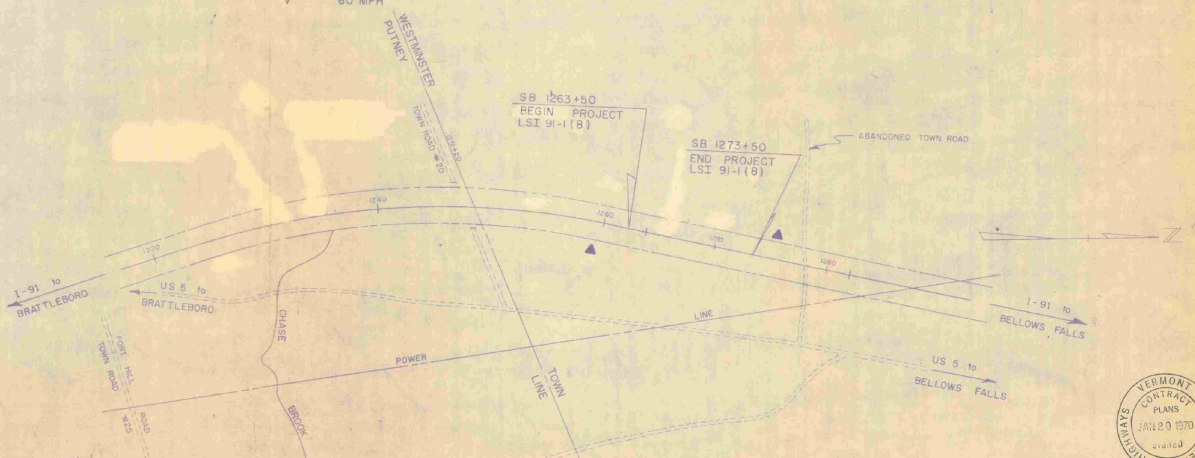
LENGTH OF PROJECT 1000 FT. = 0.189 MILES

ADT	1965	3200
ADT	1985	7500
DHV	1985	1160
D		63
T		6
V		60 MPH



The specific location of each tree and shrub will be made by the State Landscape Engineer in the field prior to any planting being performed by the Contractor. Such locations will be in accordance with the 1969 "Guide for Showing Roadside Improvements on Project Plans", the 1961 A.S.H.O. Publication "A Policy on Landscape Development for the National System of Interstate and Defense Highways", and any other supplementary location requirements which are now or may become effective.

Date: 12 January 70  
*Conrad L. Conner, Jr.*  
*John F. Conner, Jr.*  
*John F. Conner, Jr.*  
 Commissioner



CONVENTIONAL SIGNS

CONVENTIONAL SIGNS	GROUND ELEVATION	DATUM	FEDERAL-AID IDENTIFICATION SIGN
CONVENTIONAL SIGNS	GRADE ELEVATION	DATUM	
CONVENTIONAL SIGNS	CURVE DATA		
CONVENTIONAL SIGNS	DEFLECTION OF ANGLE		
CONVENTIONAL SIGNS	DEGREE OF CURVE		
CONVENTIONAL SIGNS	RADIUS OF CURVE		
CONVENTIONAL SIGNS	TANGENT DISTANCE		
CONVENTIONAL SIGNS	LENGTH OF CURVE		
CONVENTIONAL SIGNS	EXTERNAL DISTANCE		
CONVENTIONAL SIGNS	POINT OF INTERSECTION		
CONVENTIONAL SIGNS	POINT OF CURVE		
CONVENTIONAL SIGNS	POINT OF TANGENT		
CONVENTIONAL SIGNS	POINT OF VERTICAL CURVE		
CONVENTIONAL SIGNS	POINT ON SUB-TANGENT		

740

APPROVED: *Bill Lindhead* DISTRICT ENGINEER DATE: 9/5/69  
 APPROVED: *Bill Horn* ROADSIDE DEVELOPMENT ENGINEER DATE: 9/5/69  
 APPROVED: *R.O. Munn* DISTRICT ENGINEER DATE: 9/19/69  
 APPROVED: *E.H. Stokely* ALL RIGHTS ENGINEER DATE: 9/29/69  
 APPROVED: *W.L. Conner* SUPERVISOR DATE: 9/22/69

PROJECT: LSI 91-118  
 SHEET 12 OF 18 SHEETS



WESTMINSTER  
DEPARTMENT OF TRANSPORTATION  
BUREAU OF PUBLIC ROADS

THESE PLANS ARE SUBJECT TO SUCH REVISIONS AS MAY BE REQUIRED BY THE BUREAU OF PUBLIC ROADS OR THE COMMISSIONER OF HIGHWAYS.  
 CONSTRUCTION IS TO BE CARRIED ON IN ACCORDANCE WITH THESE PLANS AND THE STANDARD SPECIFICATIONS FOR HIGHWAY AND BRIDGE CONSTRUCTION DATED APRIL, 1964, AS APPROVED BY THE BUREAU OF PUBLIC ROADS ON OCTOBER 12, 1964, INCLUDING ALL SUBSEQUENT APPROVED REVISIONS AND SUCH REVISED SPECIFICATIONS AND SPECIAL PROVISIONS AS ARE INCORPORATED IN THESE PLANS.

INDEX OF SHEETS

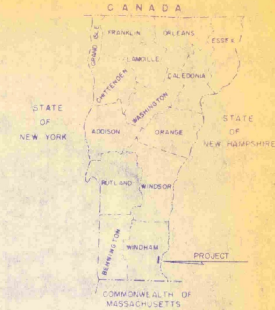
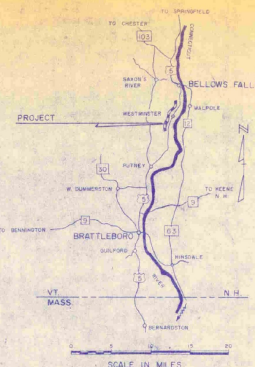
1. Title Page
2. Quantity Sheet
3. Layout
4. Street Lighting, Item 706
- 5.7. Cross sections
6. Profile of Water Line
- 9-15. Building Plans
16. Plumbing Plans
17. Electrical Plans
18. Heating and Vent'ating Plans

STATE OF VERMONT  
DEPARTMENT OF HIGHWAYS

PROPOSED IMPROVEMENT

TOWN OF WESTMINSTER  
COUNTY OF WINDHAM  
BRATTLEBORO-BELLOWS FALLS ROAD

INTERSTATE PROJECT



PROJECT NAME & NUMBER	TYPE
WESTMINSTER LSI 91-1(8)	BUILDING
RECORD PLANS - MATERIALS	
JOHN BLANCHARD EXCAVATION, WALLINGFORD, VT.	
LARRY A. FOLEY CONCRETE, PERKINSVILLE, VT.	
STROMBERG PUMPS & HEATING CO., KEENE, N.H.	
FRANK G. GUY ELECTRICAL, HANOVER, N.H.	
AL MELANSON CO INCORPORATED, KEENE, N.H.	
EXEL PRINTING CO., KEENE, N.H.	
SIMMONS SALES & SERVICE, SPRINGFIELD, MASS.	
PRIMROSE GLASS COMPANY, KEENE, N.H.	
NEW ENGLAND DECK & FLOORING, NEEDHAM HEIGHTS, MASS.	
FUTNEY NURSERIES, FINE V., VERMONT	

BEGINNING AT A POINT 1120 FEET NORTHERLY OF THE  
PUTNEY-WESTMINSTER TOWN LINE AND EXTENDING  
NORTHERLY 1,000 FEET.

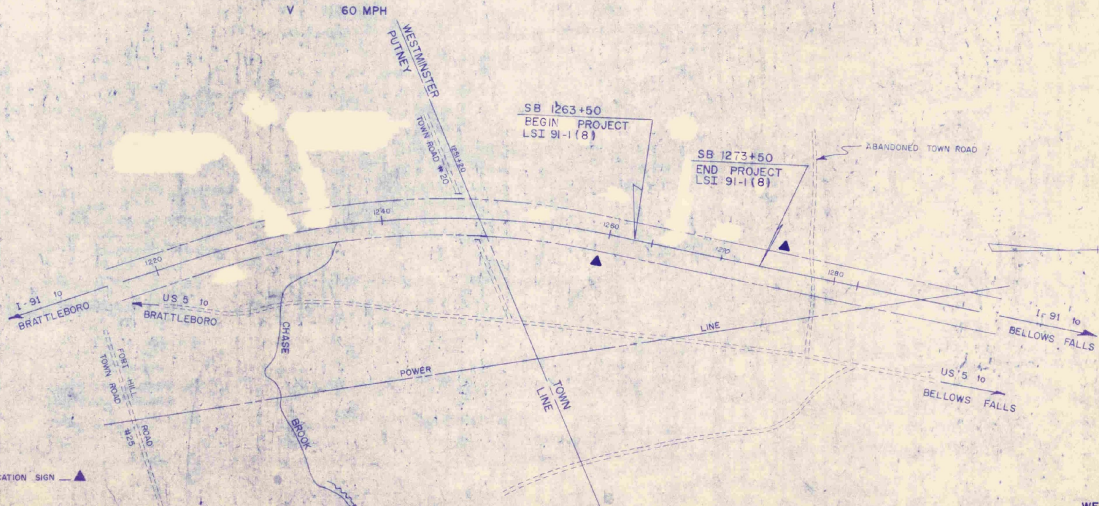
LENGTH OF PROJECT 1000 FT. = 0.189 MILES

ADT 1965	3200
ADT 1985	7500
DHV 1985	1160

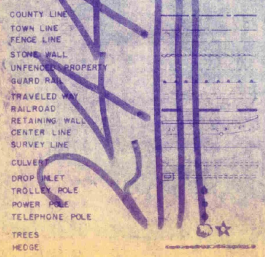
D	63
T	6
V	60 MPH

CONNECTICUT VALLEY  
CONSTRUCTION INCORPORATED  
L.R. MASUSE  
JANUARY 1970  
APRIL 1970

The specific location of each tree and shrub will be made by the State Landscape Engineer or the field prior to any planting being performed by the Contractor. Such locations will be in accordance with the 1959 "Guide for Showing Roadside Improvements on Project Plans", the 1961 A.A.S.H.O. Publication "A Policy on Landscape Development for the National System of Interstate and Defense Highways", and any other supplementary location requirements which are now or may become effective.



CONVENTIONAL SIGNS



FEDERAL-AID IDENTIFICATION SIGN ▲

SCALES

TITLE	1" = 500'
TYPICAL	1" = 25'
PLAN	1" = 10'
PROFILE HORIZONTAL	1" = 10'
PROFILE VERTICAL	1" = 10'
CROSS SECTIONS	1" = 10'

THESE PLANS ARE SUBJECT TO SUCH REVISIONS AS MAY BE REQUIRED BY THE BUREAU OF PUBLIC ROADS OR THE COMMISSIONER OF HIGHWAYS.  
CONSTRUCTION IS TO BE CARRIED ON IN ACCORDANCE WITH THESE PLANS AND THE STANDARD SPECIFICATIONS FOR HIGHWAY AND BRIDGE CONSTRUCTION DATED APRIL 1964 AS APPROVED BY THE BUREAU OF PUBLIC ROADS ON OCTOBER 12, 1964, INCLUDING ALL SUBSEQUENT APPROVED REVISIONS AND SUCH REVISED SPECIFICATIONS AND SPECIAL PROVISIONS AS ARE INCORPORATED IN THESE PLANS.

APPROVED: *Bill Goodheart* LANDSCAPE ENGINEER DATE 9/17/67  
APPROVED: *R. D. Mann* ROADSIDE DEVELOPMENT ENGINEER DATE 9/17/67  
APPROVED: *R. D. Mann* TRAVEL ENGINEER DATE 9/19/69  
APPROVED: *E. H. Stuckey* TRAVEL ENGINEER DATE 9/22/69  
APPROVED: *Bill Goodheart* TRAVEL ENGINEER DATE 9/22/69

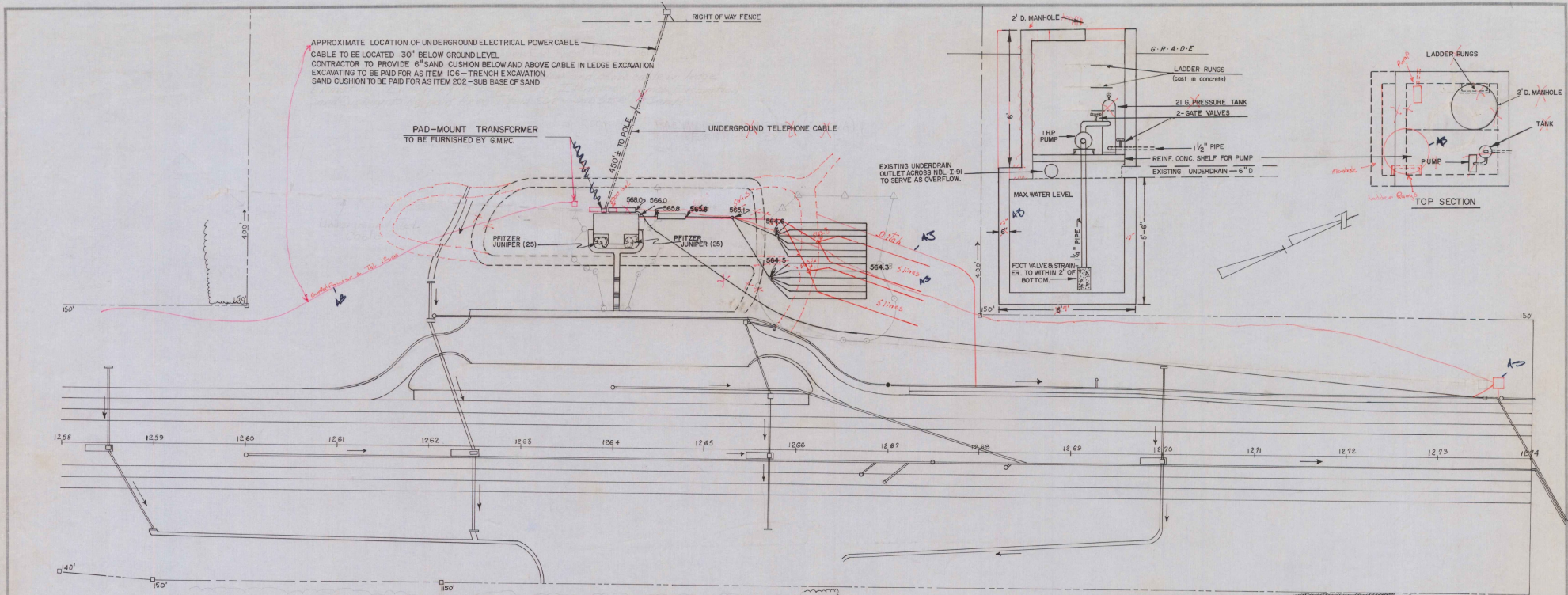
**WESTMINSTER**  
DEPARTMENT OF TRANSPORTATION  
BUREAU OF PUBLIC ROADS

APPROVED \_\_\_\_\_  
DIVISION ENGINEER DATE \_\_\_\_\_

PROJECT LSI NO. 91-1(8)  
SHEET 1 OF 16 SHEETS







THE FOLLOWING FACILITIES ARE TO BE FURNISHED AND INSTALLED AND PAID FOR UNDER ITEM 801, UNDERGROUND UTILITY SERVICES.

A 15 kv PRIMARY UNDERGROUND CABLE WITH GROUNDED NEUTRAL, EITHER COPPER OR ALUMINUM CONDUCTOR, CONDUCTING STRAND SHEATHING, 175 MILS. HIGH MOLECULAR WEIGHT POLYETHYLENE INSULATION, 30 MILS. CONDUCTING POLYETHYLENE LAYER, NO. 14, NO. 12 OR NO. 10 SOLID COATED WIRES UNIFORMLY SPREAD AROUND THE CABLE AS A CONCENTRIC SERVE WITH A NOMINAL CONDUCTIVITY EQUAL TO THE POWER CONDUCTOR.

THE PRIMARY CABLE WILL BE ENCLOSED IN STEEL CONDUIT, 2-1/2" I.D. 20' UP THE POLE. THIS CONDUIT WILL BE OFFSET 5" FROM THE POLE. SEE DETAILS, CONDUIT UP POLE.

A CEMENT PAD OF SUFFICIENT SIZE FOR AT LEAST A 50 KVA PAD-MOUNT TRANSFORMER WILL BE SUPPLIED BY THE CONTRACTOR. STEEL CONDUIT SWEEP BENDS THROUGH THE CEMENT PAD WILL BE INSTALLED BY THE CONTRACTOR CONTACT GREEN MOUNTAIN POWER CORP. FOR LOCATION OF SWEEP BENDS.

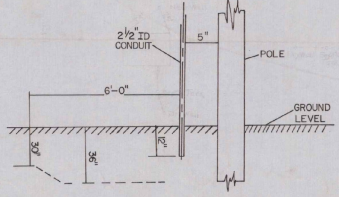
STRESS CONES FOR THE PRIMARY CABLE, AT THE POLE END AND THE TRANSFORMER END, WILL BE CARRIED IN THE CONTRACTOR'S BID FOR 4 800. THESE STRESS CONES TO BE INSTALLED BY GREEN MOUNTAIN POWER CORP.

LIGHTNING ARRESTORS AND CUTOUTS WILL BE INSTALLED BY GREEN MOUNTAIN POWER CORP. ALL PRIMARY CONNECTIONS WILL BE MADE BY GREEN MOUNTAIN POWER CORP. PERSONNEL. GREEN MOUNTAIN POWER CORP. WILL ASSIST THE CONTRACTOR IN INSTALLING THE CONDUIT ON THE POLE AT NO COST TO THE CONTRACTOR.

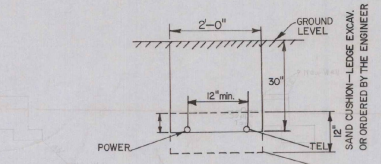
ELECTRICAL AND TELEPHONE SERVICES ARE TO BE PLACED IN A SUITABLE SLEEVE UNDER ALL ROADWAYS, DITCHLINE TO DITCHLINE.

NEW ENGLAND TELEPHONE COMPANY IS TO INSTALL UNDERGROUND TELEPHONE CABLE AT THE SAME TIME THE CONTRACTOR INSTALLS THE UNDERGROUND ELECTRICAL POWER CABLE. THE CONTRACTOR MUST GIVE TELEPHONE COMPANY SUFFICIENT NOTICE TO OBTAIN CABLE AND SCHEDULE WORK.

THE WORK SCHEDULE IS TO BE APPROVED BY THE ENGINEER.



DETAILS CONDUIT UP POLE  
 NO SCALE



TYPICAL SECTION  
 UTILITIES - POWER & TELEPHONE  
 NO SCALE

NOTE: In ledge excavation the contractor must provide 6" sand cushion below and above cables. Payment note made under Item 202. Sub-base of Sand.

REST AREA UTILITIES

WESTMINSTER

SURVEYED BY: \_\_\_\_\_ DATE \_\_\_\_\_

DRAWN BY: LRM DATE \_\_\_\_\_

TRACED BY: \_\_\_\_\_ DATE \_\_\_\_\_

PROJ. LSI NO. 91-1 (8)

SHEET 3 OF 18

NOTES:

LIGHTING SYSTEM TO BE ERECTED IN ACCORDANCE WITH STANDARD SPECIFICATIONS FOR "STREET LIGHTING" ITEM 705 AND THE AMERICAN STANDARD PRACTICE FOR ROADWAY LIGHTING (1963)

ALL POLES AND BRACKETS TO BE ALUMINUM, BRACKETS TO BE TAPERED ELLIPTICAL BRACKETS AS SHOWN ON STANDARD SHEET E-52.

ALL LIGHT STANDARDS TO BE EQUIPPED WITH FRANGIBLE BASES.

ALL LUMINAIRES TO BE ON 6 FOOT BRACKET ARMS AND MOUNTED 30 FEET ABOVE THE PAVEMENT.

LUMINAIRES 2 TO 6 INCLUSIVE TO BE 400 WATT MERCURY VAPOR TYPE, ASA TYPE III<sup>M</sup> LIGHT DISTRIBUTION

LUMINAIRES 1 & 7 TO BE 250 WATT MERCURY VAPOR TYPE, ASA TYPE III<sup>M</sup> LIGHT DISTRIBUTION.

ALL CONCRETE BASES TO BE TYPE A (SEE STANDARD SHEET E-51)

CONCRETE BASES 1, 2, 3, 6 AND 7 TO BE LOCATED 6 FEET BACK FROM FACE OF CURB TO CENTER OF BASE. MOUNTED LUMINAIRES TO BE PERPENDICULAR TO THE CURB LINE. STREET LIGHTS 4 & 5 (INCLUDING CONCRETE BASES) TO BE LOCATED AS SHOWN ON PLAN.

BASES 1, 5, AND 7, AND PULL BOX 1 TO BE PROVIDED WITH CAPPED CONDUIT AS SHOWN ON PLAN.

CONCRETE BASES, TYPE A = 7

PULL BOX, TYPE A = 1

ALUMINUM STANDARDS WITH FRANGIBLE BASE AND BRACKETS = 7

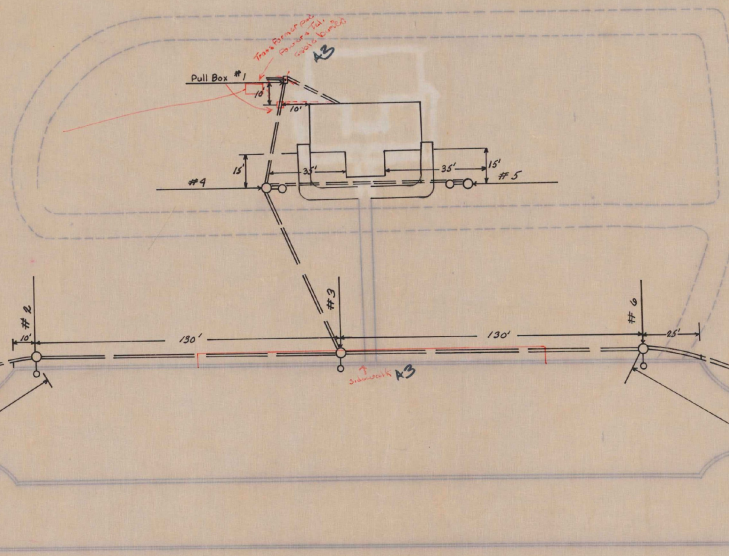
MERCURY VAPOR TYPE LUMINAIRES, 400 WATT = 5, 250 WATT = 2

APPROXIMATE LENGTH OF 2 INCH CONDUIT = 800 FEET

STREET LIGHTING CONDUIT TO BE CARRIED THROUGH FOUNDATION TO CONTROL PANEL SHOWN ON THE DETAILED BUILDING PLANS.

STREET LIGHTING CIRCUIT TO HAVE ITS OWN CIRCUIT SWITCH AND BREAKERS. WIRE CONNECTIONS IN THE BASE OF EACH LIGHT STANDARD SHALL BE FUSED-Y-PLUG-IN CONNECTORS. EACH CONNECTOR SHALL BE A FACTORY MOLDED KIT AND FUSE HOLDER OF A HIGH QUALITY INSULATING RUBBER, SIZED FOR WATER SEAL FIT OVER THE WIRE TO BE CONNECTED.

All Conduit to be installed as Part of Item 705

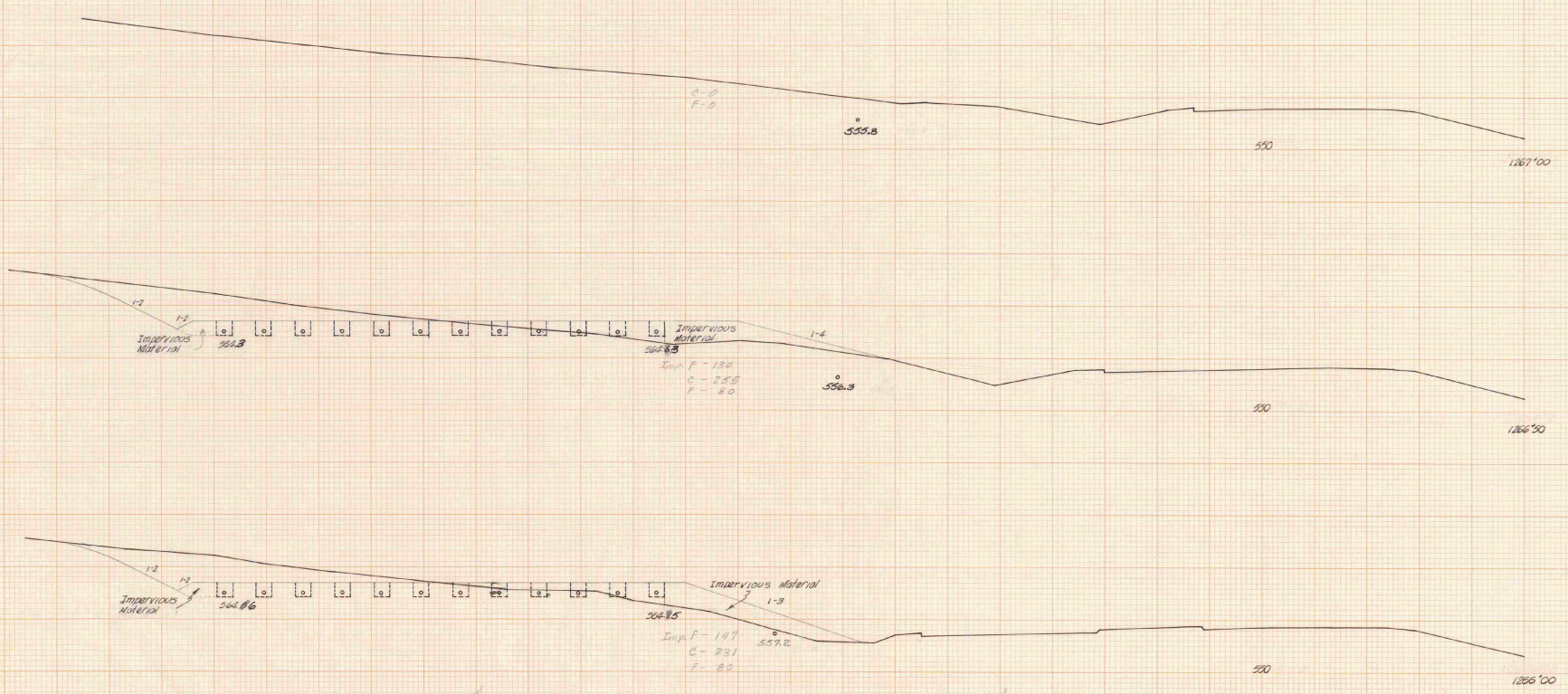


1260      1261      1262      1263      1264      1265      1266      1267      1268

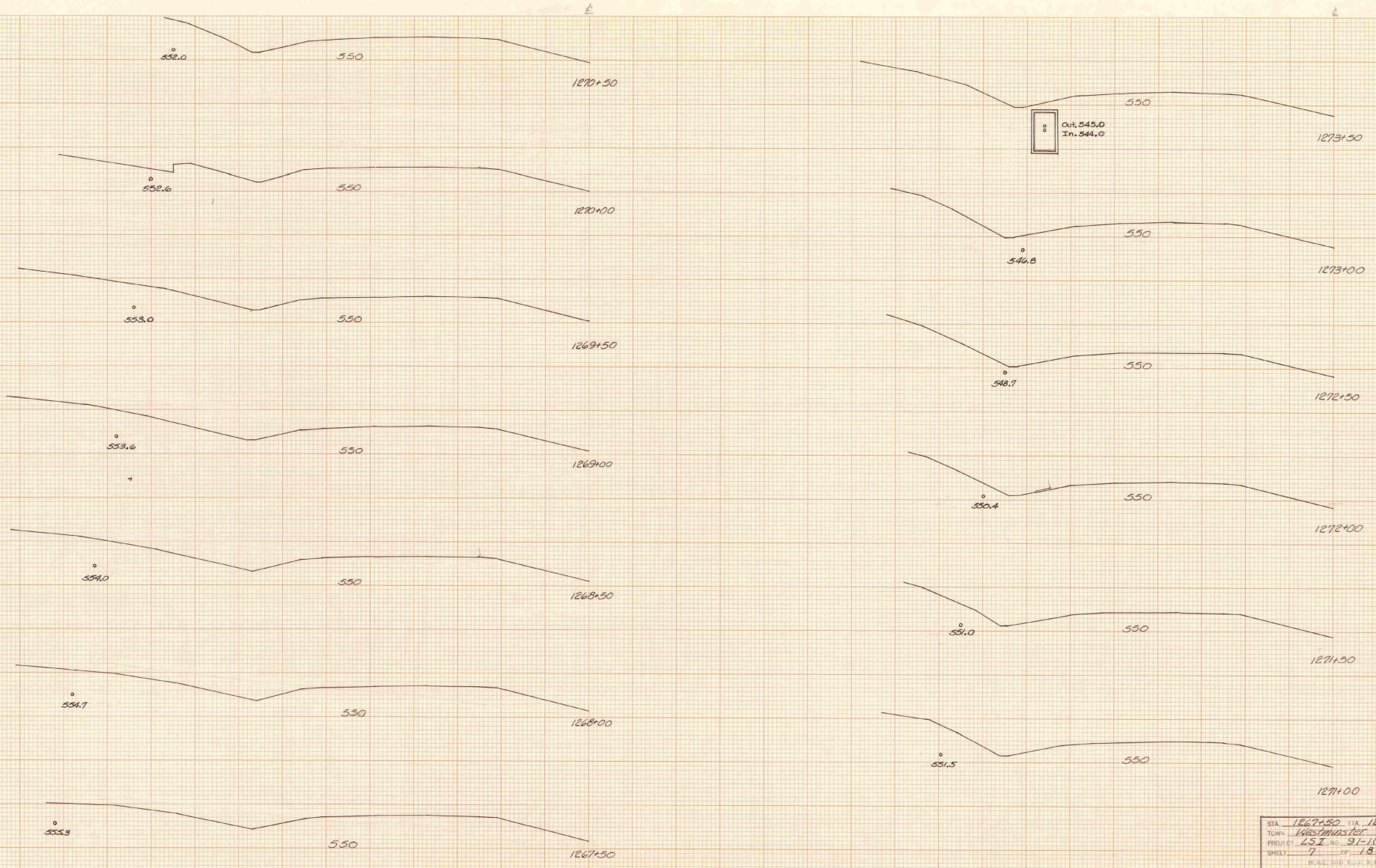
ITEM 705 STREET LIGHTING SOUTHBOUND REST AREA	WESTMINSTER	
	DESIGNED BY	LRM
	TRACED BY	FW
	DATE	11/27
PROJ. LSI NO.	91-11(B)	
SHEET	4	OF 18



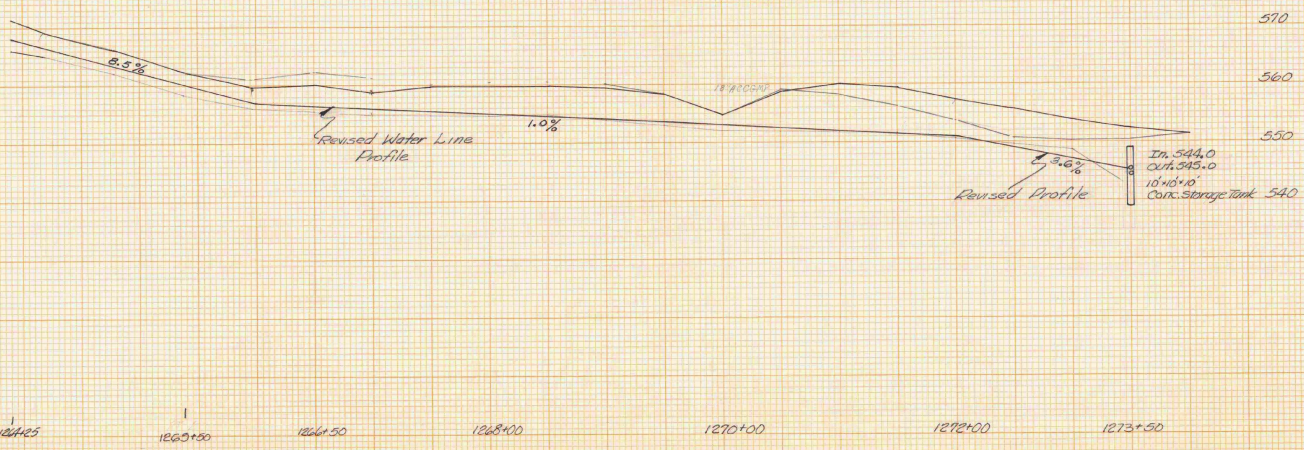
E



STA	1266'00	STA	1267'00
TOWN	Westminster		
PROJECT	231		
SHEET	6	OF	18 SHEETS
SCALE			
SURVEYED BY			



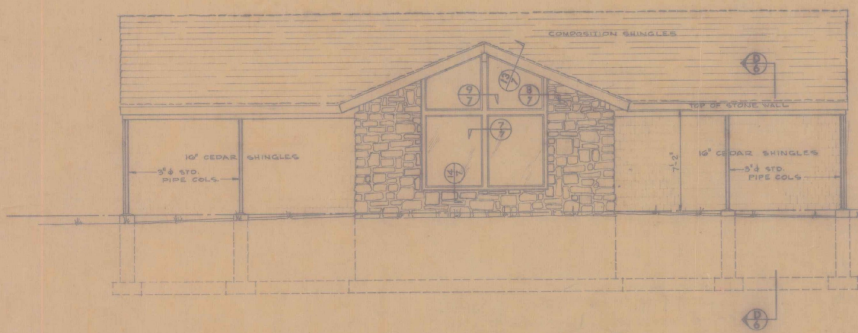
STA. 1267+50 TO 1273+50  
 TOWN: Washburn  
 PROJ. OF: LSJ No. 91-1(8)  
 SHEET: 7 OF 18 SHEETS  
 HORIZ. AND VERT. SCALE:  
 1" = 10' 20'  
 SURVEYED BY: \_\_\_\_\_ DATE: \_\_\_\_\_



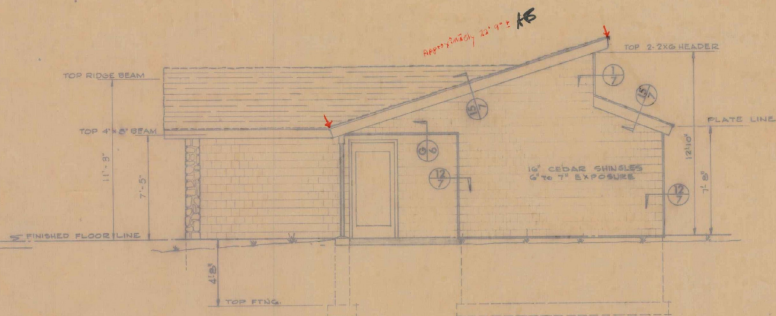
Profile of Waterline

STA. 1261+00	STA. 1273+50
TOWN Westchester	NO. 91-100
PROJECT LSI	SHEETS 10
SHEET 8	
HORIZ. AND VERT. SCALE	
1" = 100'	1" = 20'
SURV. YEA. BY	DATE

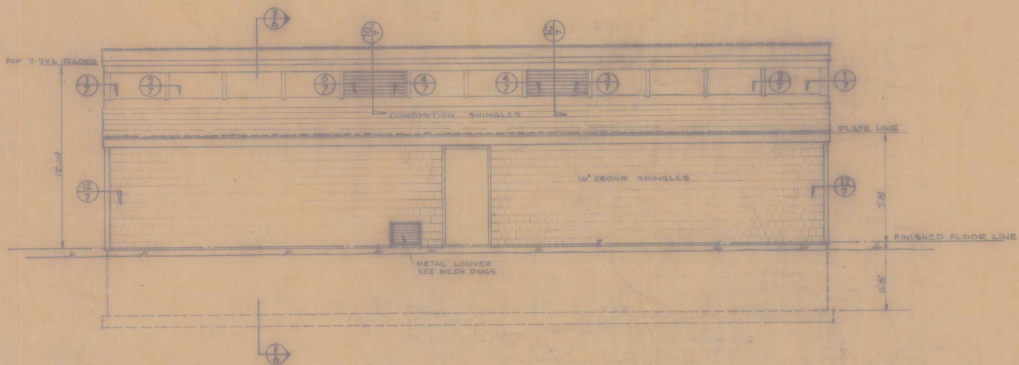




FRONT ELEVATION

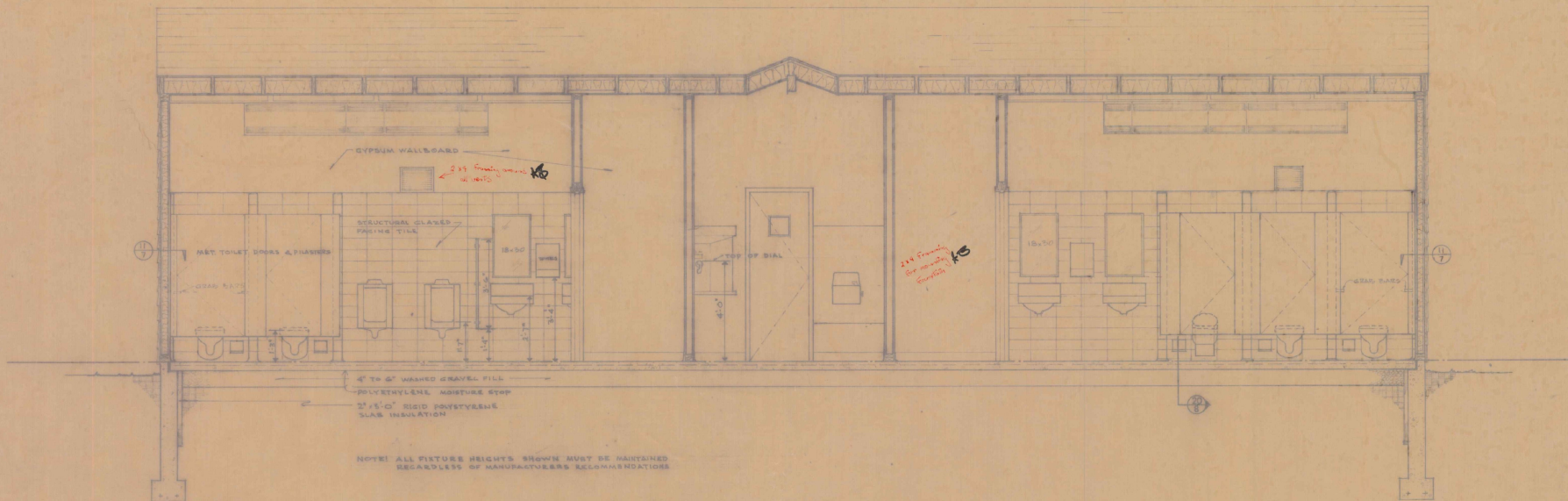


SIDE ELEVATION



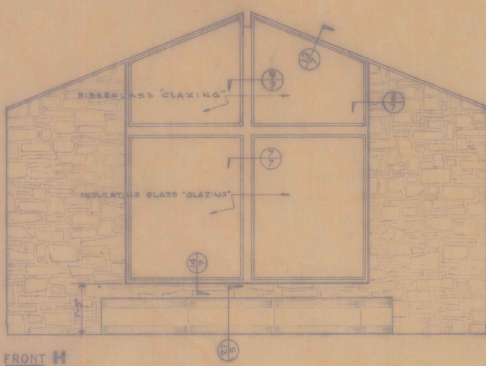
REAR ELEVATION

WESTMINSTER			
ROADSIDE REST FACILITIES			
ELEVATIONS			
STATE OF VERMONT			
DEPARTMENT OF HIGHWAYS			
PROJECT	LSI	91-1 (8)	3
SCALE	1/4\"/>		

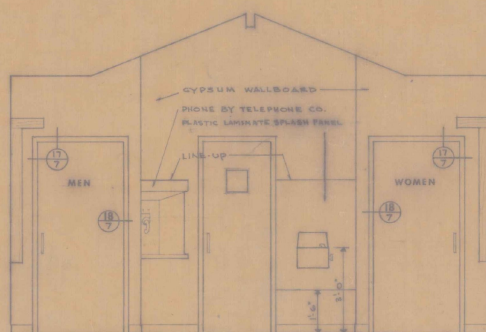


NOTE: ALL FIXTURE HEIGHTS SHOWN MUST BE MAINTAINED REGARDLESS OF MANUFACTURER'S RECOMMENDATIONS

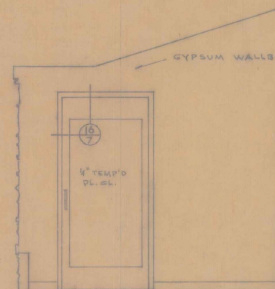
SECTION A-A



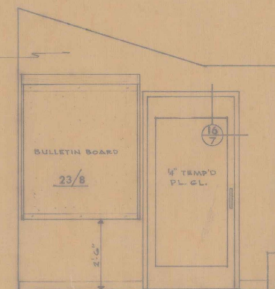
FRONT H



REAR J



LEFT K



RIGHT L

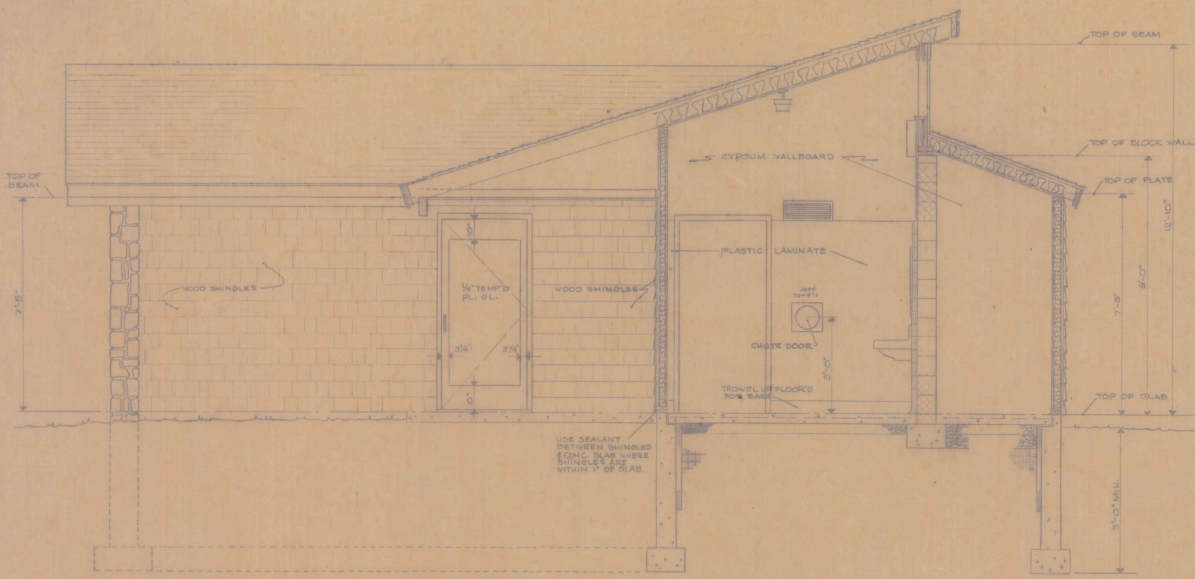
LOBBY ELEVATIONS

WESTMINSTER

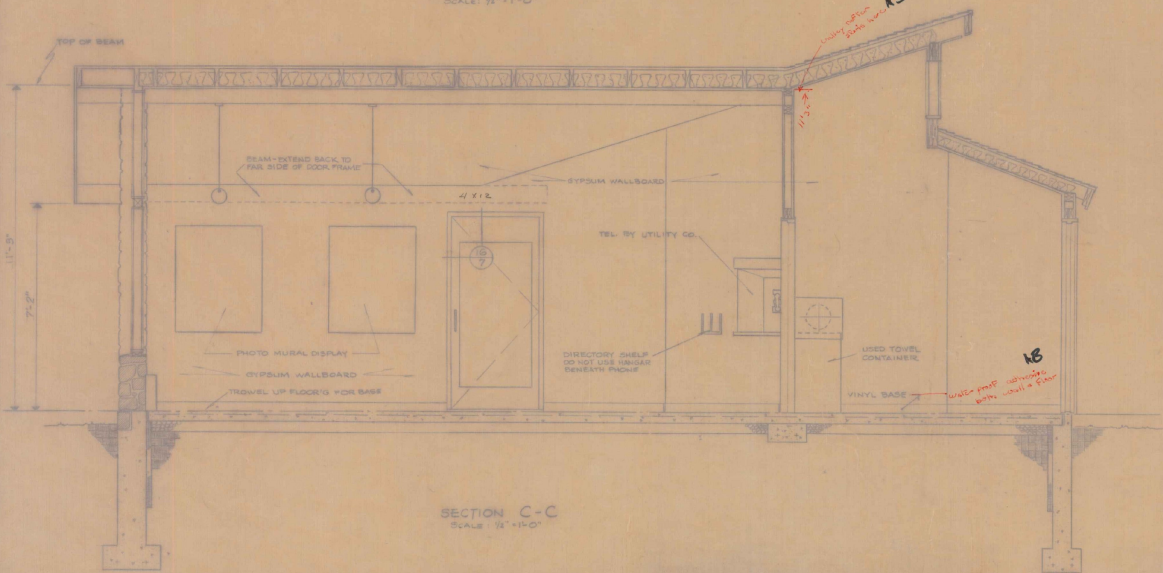
ROADSIDE REST FACILITIES  
LONGITUDINAL SECTION & INTERIOR ELEV'S

STATE OF VERMONT  
DEPARTMENT OF HIGHWAYS

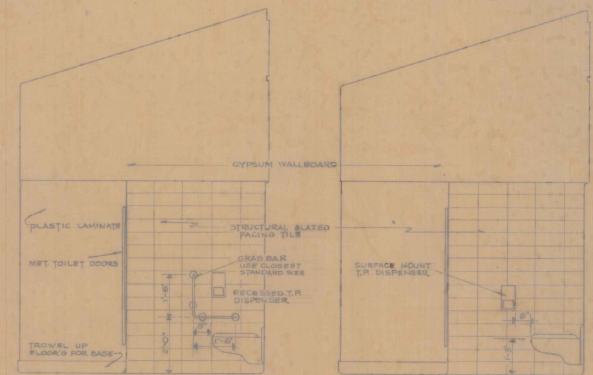
PROJECT LSI 91-1 (8) 4  
SCALE 1/2" = 1'-0" SHEET II OF 18



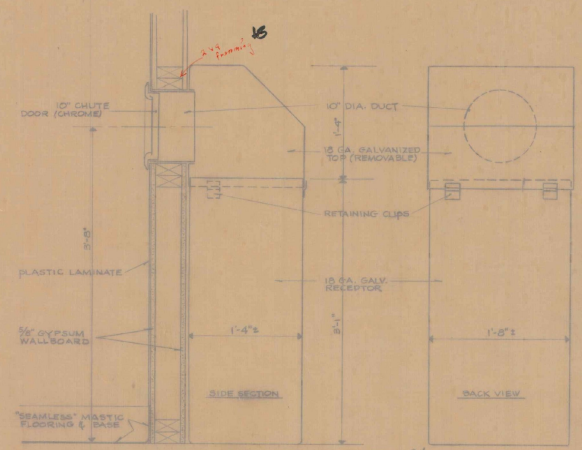
SECTION B-B  
SCALE: 3/4" = 1'-0"



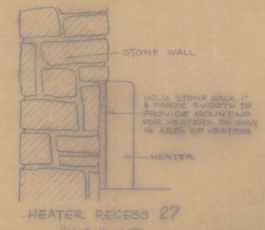
SECTION C-C  
SCALE: 3/4" = 1'-0"



M INTERIOR ELEVATIONS N  
SCALE: 1/2" = 1'-0"

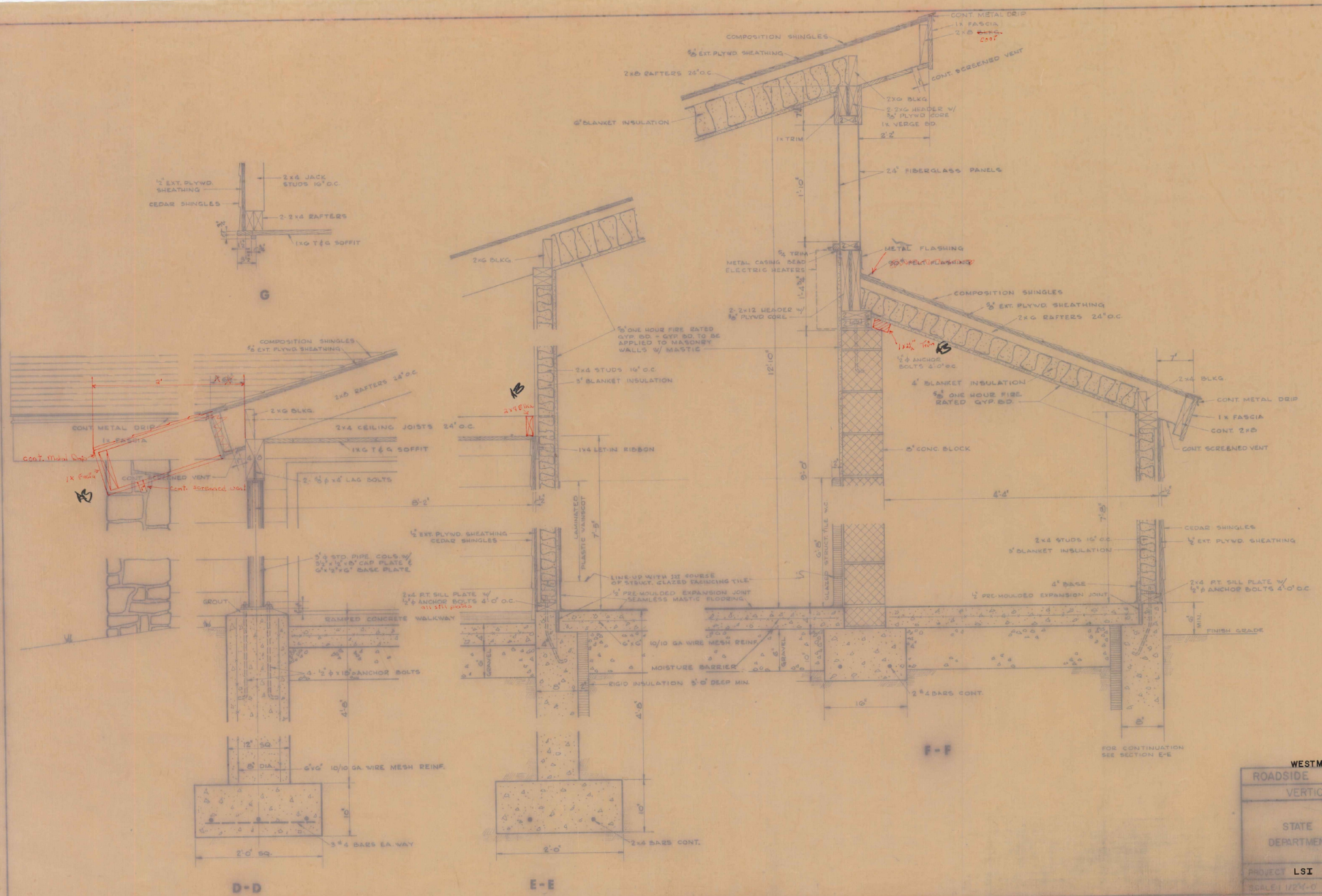


USED TOWEL RECEPTORS 24  
SCALE: 1/2" = 1'-0"



HEATER RECESS 27  
SCALE: 1/2" = 1'-0"

WESTMINSTER	
ROADSIDE REST FACILITIES	
TRANSVERSE SECTIONS, INTERIOR ELEVATIONS AND DETAILS	
STATE OF VERMONT DEPARTMENT OF HIGHWAYS	
PROJECT LSI NO. 91-1 (6)	5
SCALE AS SHOWN SHEET 12 OF 18	



**WESTMINSTER**  
**ROADSIDE REST FACILITIES**  
**VERTICAL SECTIONS**

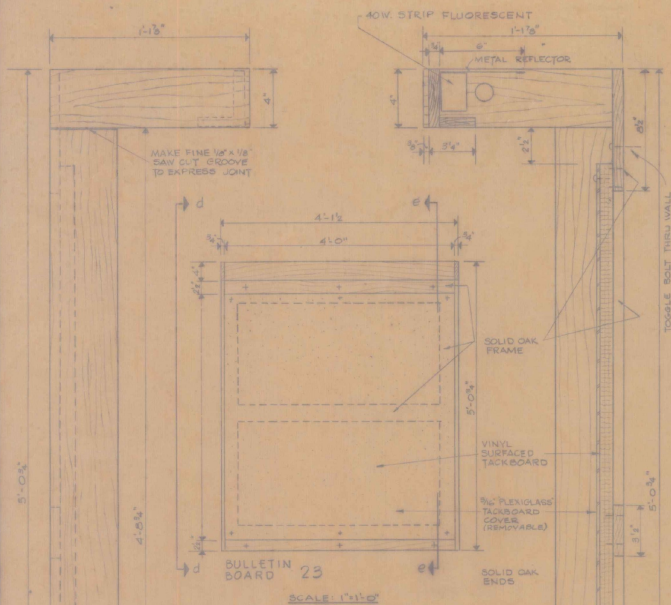
---

STATE OF VERMONT  
 DEPARTMENT OF HIGHWAYS

---

PROJECT LSI # 91-1 (8)  
 SCALE 1/2"=0' SHEET 13 OF 18





BULLETIN BOARD 23  
SCALE: 1" = 1'-0"

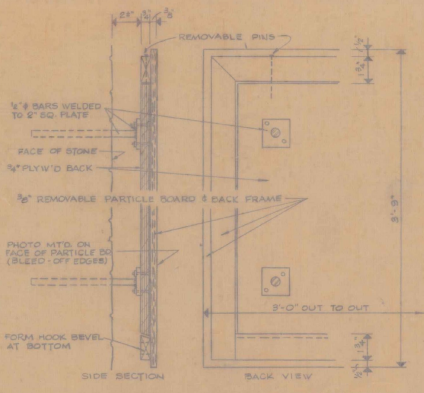
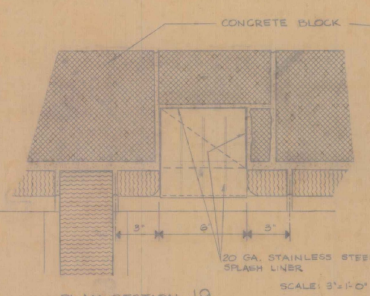
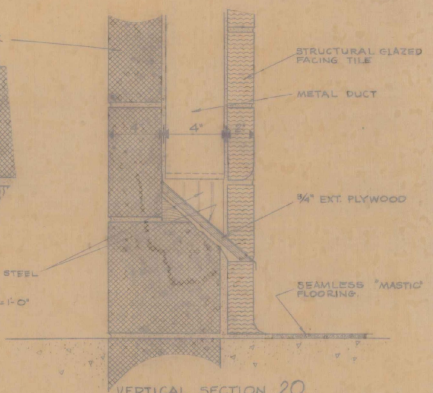


PHOTO MURAL MOUNTINGS 25  
SCALE: 3/4" = 1'-0"

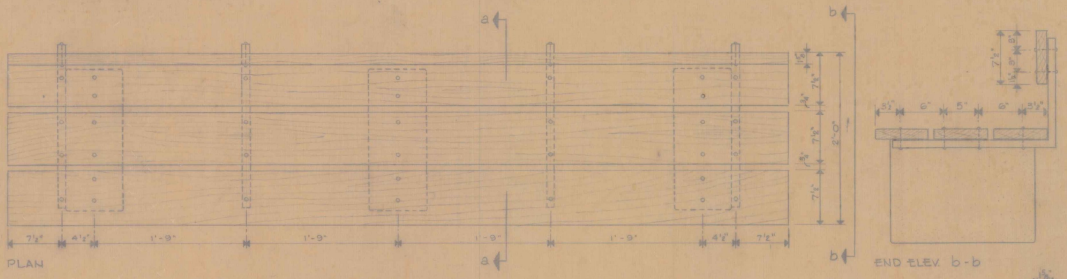


PLAN SECTION 19  
SCALE: 3/4" = 1'-0"



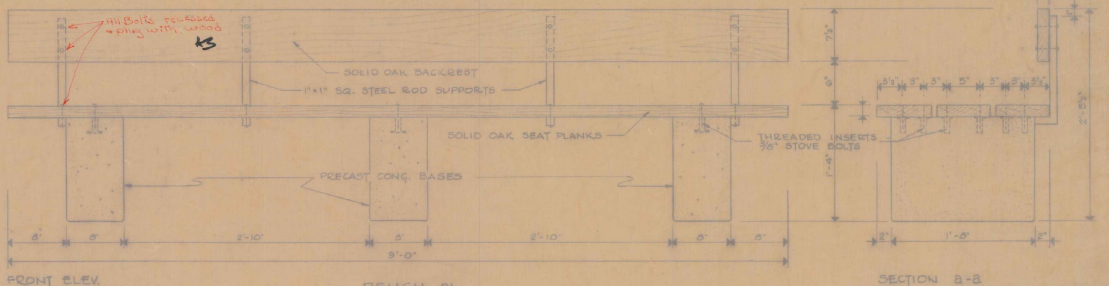
VERTICAL SECTION 20

NOTE: ALL SCREWS, BOLTS & EXPOSED FASTENERS TO BE TAMPERPROOF.



PLAN

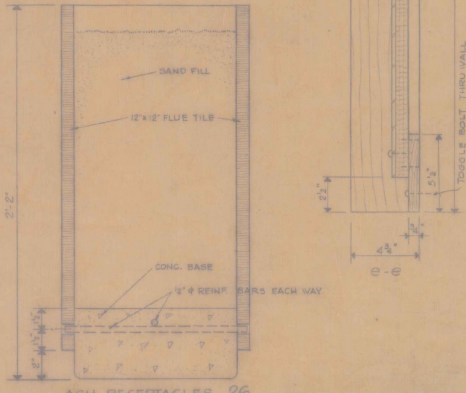
END ELEV. b-b



FRONT ELEV.

BENCH 21  
SCALE: 1" = 1'-0"

SECTION a-a



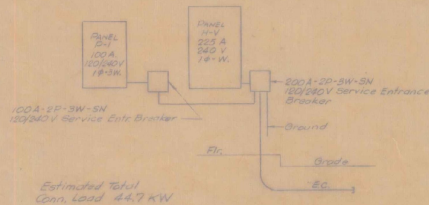
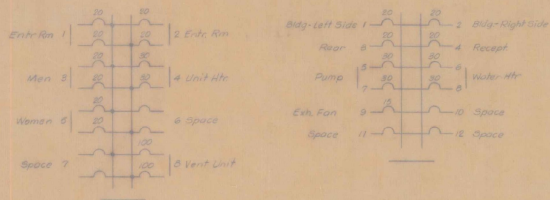
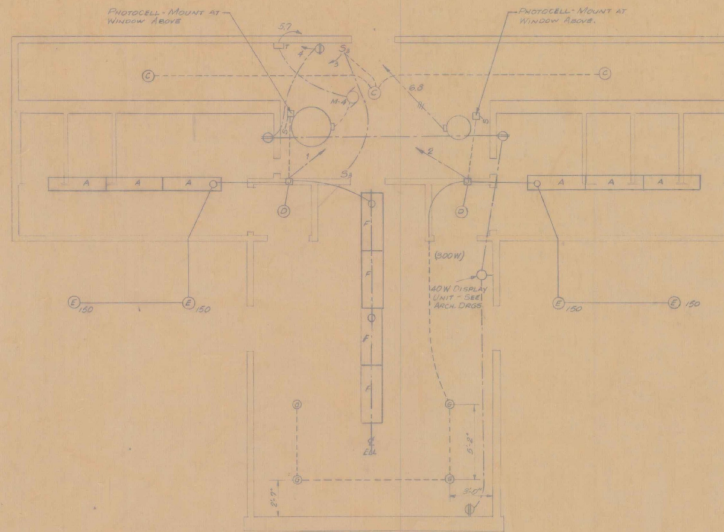
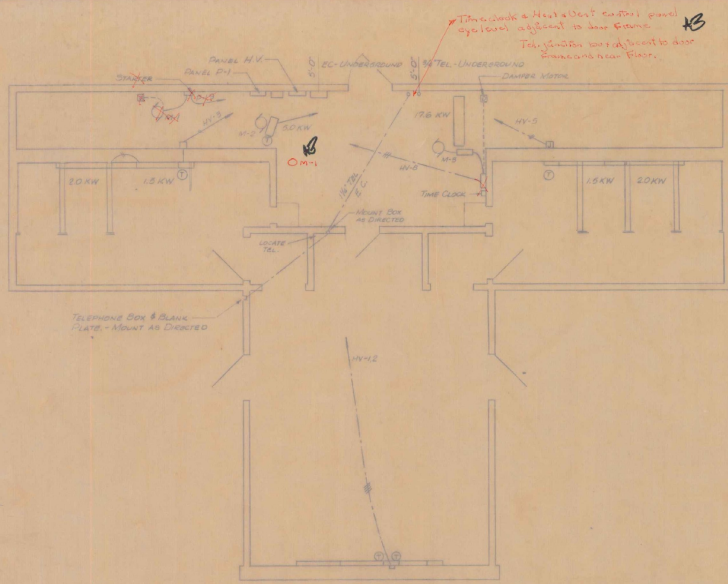
ASH RECEPTACLES 26  
SCALE: 3" = 1'-0"

WESTMINSTER  
ROADSIDE REST FACILITIES  
INTERIOR DETAILS

STATE OF VERMONT  
DEPARTMENT OF HIGHWAYS

PROJECT LSI # 91-1(8)  
SCALE AS SHOWN SHEET 15 OF 18





Motor No.	Equip. Name	H.P.	Volts Phase	Type of Drive	Motor Protection	Control
M-1	Exh. Fan	1/2	120V 1	Breaker	Starter	Auto-From M-3 starter
M-2	Unit Heater	1/20	120V 1	Breaker	—	Note 1
M-3	Vent Unit	1/2	120V 1	Disc Sw	Starter	Note 2
M-4	Water Pump	1/2	120V 1	Breaker	Fused Disc	Phase Sw

NOTES: 1. Starts with 3/4 kW coil from built-in thermostat.  
2. Part of factory wired electric heater unit control.  
Manual & 7 day time clock start & stop.

Symbol	Description	Manuf. & Cat. No.	Remarks
⊖	Single Pole switch	12A - AC Fed. Spec. W-3-200-A	Surface mounted
⊖	Three Way switch	12A - AC Fed. Spec. W-3-200-A	Surface mounted
⊖	Double Pole Circuit-Breaker	—	Mount as directed
⊖	Lighting Outlet	See Lighting Fixture Sched.	—
⊖	Junction Box	—	Provide Cover Plates
⊖	Motor & Number	—	Furnished & installed by others
⊖	Thermostat	—	Control only, of unit installed
⊖	Branch cut - concealed in ceiling or wall	—	Elect. Metal Tubing
⊖	Branch cut - concealed in floor	—	Heavy Wall Conduit
⊖	Branch Circuit - exposed	—	Type NM or Electric Metal Tubing
⊖	Hand Run to Panel	—	—

Mark	Manufacturer or equal	Catalog No. & Name	Lamp Type & Max.	Lamp to install	Mounting	Size	Exposed Finish	Remarks
A	Miller Day-Grife Wheeler	*41241 Uperture	F	F-40	Surface	12" x 48"	Gray	Use No. 15 Ceiling Sucker If Obs'd
C	Omega Brass & Daymour Brass Works	*Nr 44 Nipress Lamp Holder	F	100W	Box	4 1/2" dia	Perce	—
D	Omega Brass & Daymour Brass Works	*Recessed Sq. 15-8441-NR-72-TL	150W	100W	Recess	11" x 11"	White	—
E	Omega Brass & Daymour Brass Works	*Recessed 3" x 2 1/2"	150W	R-40 150W	Recess	3 1/2" dia	Coat Alum.	—
F	Vindex Lighting Supply Co.	*WA 440 WA Series	F	F-40	Surface	15" x 4 1/2"	White	—
G	Omega Brass & Daymour Brass Works	*CFH	R-40 150W	150W	Surface Canopy	7 1/2" dia	Coat Alum.	—

Notes: Fixtures A, E, F & G under photocell control. Install two automatic 1500W photocells.

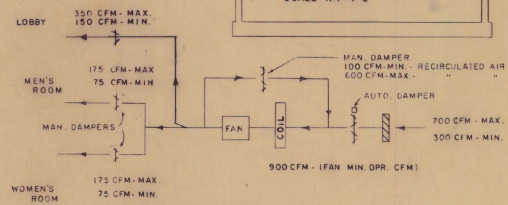
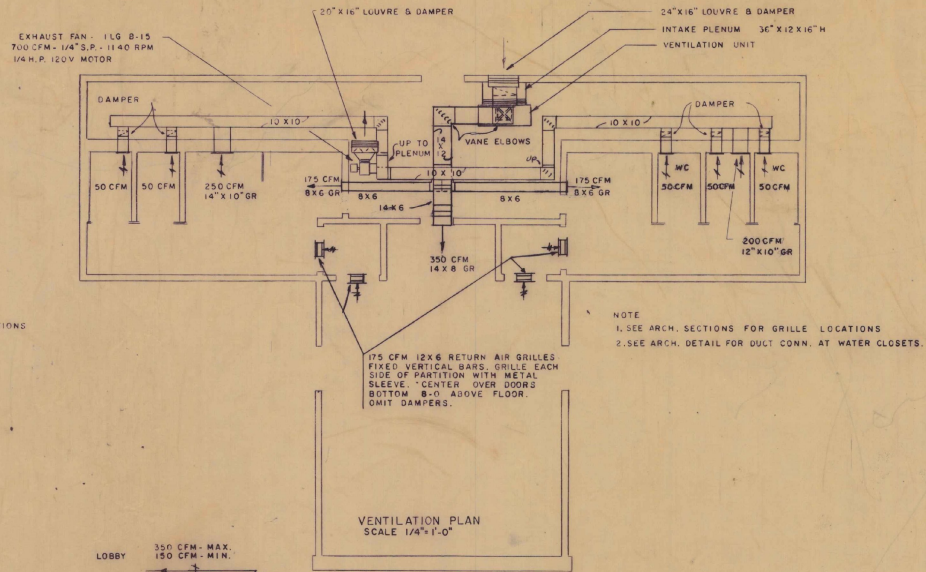
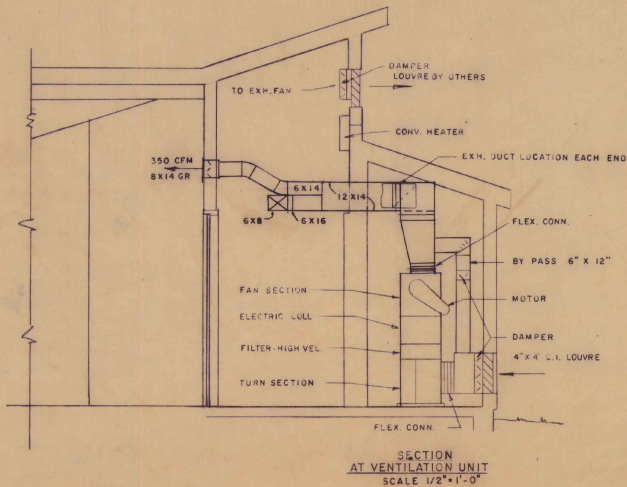
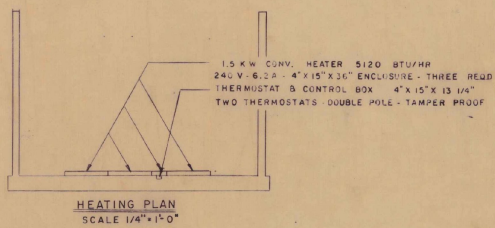
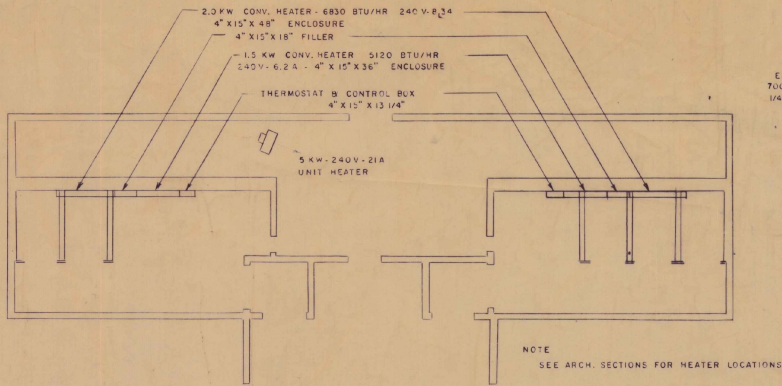
\* - Catalog number & name with asterisk refer to manufacturer with asterisk. Other manufacturers indicated of equal type and quality may be used.

WESTMINSTER  
ROADSIDE REST FACILITIES  
ELECTRICAL (GEC-48-006, E-1)

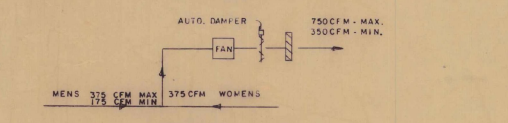
STATE OF VERMONT  
DEPARTMENT OF HIGHWAYS

PROJECT LSI No. 91-1 (8)

SCALE: As Shown SHEET 17 OF 18



VENTILATION SYSTEM  
SUPPLY



VENTILATION SYSTEM  
EXHAUST

FLOW DIAGRAMS  
NO SCALE

WESTMINSTER  
ROADSIDE REST FACILITIES  
HEATING & VENTILATION

STATE OF VERMONT  
DEPARTMENT OF HIGHWAYS

PROJECT LSI No 91-1 (8)  
SCALE: As Shown SHEET 18 OF 18

HV-1

Vermont Agency of  
Transportation  
PHASE 1-INTERSTATE  
#122302-01  
INITIALS   
HANGER 362

Westminster  
LSI 91-1 (8)

\*  
1970

1970