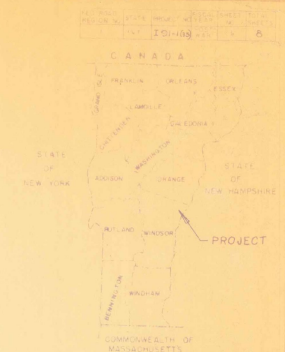
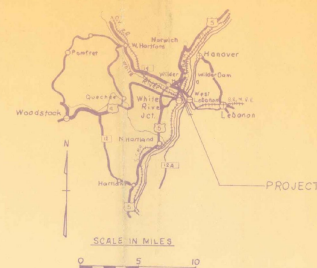


INDEX OF SHEETS

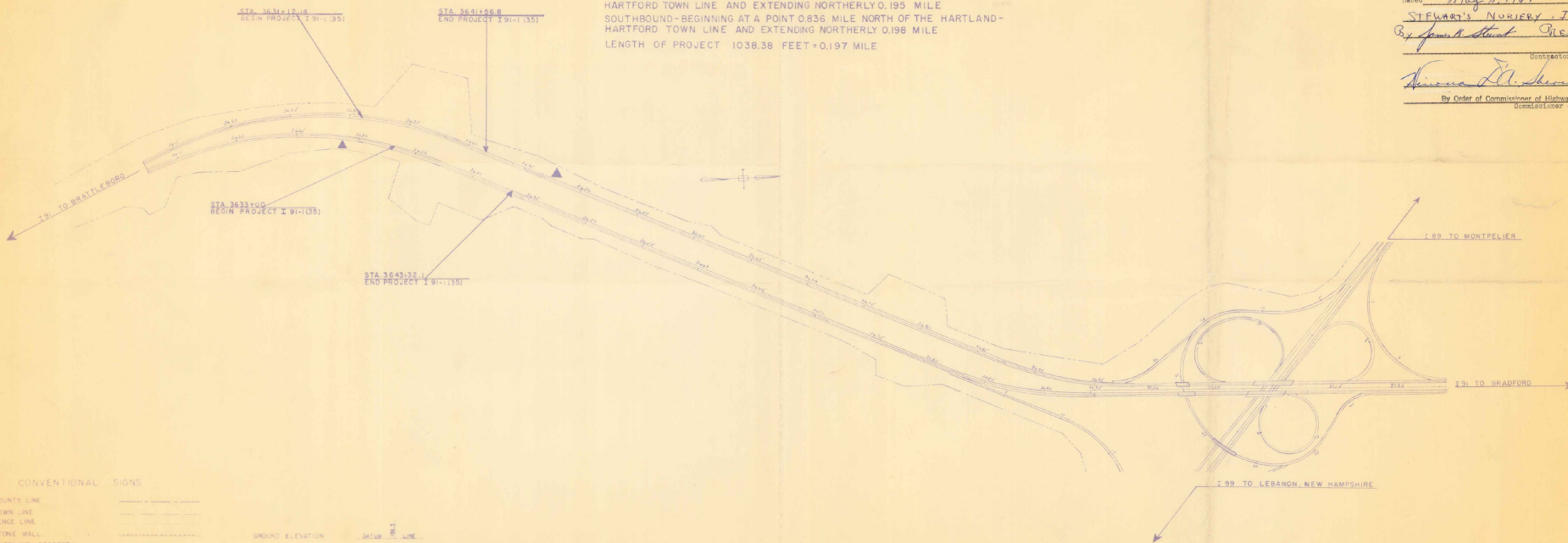
1. TITLE PAGE
2. CONSTRUCTION WARNING SIGNS
3. E-31 FEDERAL AID CONSTRUCTION IDENTIFICATION SIGNS
4. -3- MINIMUM PLANTING DISTANCES
5. -5- BRACING OF TREES
6. QUANTITY SHEET
7. PLAN SHEETS

NOTE:
THE SPECIFIC LOCATION OF EACH SHRUB AND TREE WILL BE MADE BY THE STATE LANDSCAPE ENGINEER IN THE FIELD PRIOR TO ANY PLANTING BEING PERFORMED BY THE CONTRACTOR. SUCH LOCATIONS WILL BE IN ACCORDANCE WITH THE 1959 "GUIDE FOR SHOWING ROADSIDE IMPROVEMENTS ON PROJECT PLANS," THE 1961 A & S M. O. PUBLICATION, "A POLICY ON LANDSCAPE DEVELOPMENT FOR THE NATIONAL SYSTEM OF INTERSTATE AND DEFENSE HIGHWAYS," AND ANY OTHER SUPPLEMENTARY LOCATION REQUIREMENTS WHICH ARE NOW OR MAY BECOME EFFECTIVE.

STATE OF VERMONT
DEPARTMENT OF HIGHWAYS
PROPOSED IMPROVEMENT
TOWN OF HARTFORD
COUNTY OF WINDSOR
INTERSTATE ROUTE 91



NORTHBOUND-BEGINNING AT A POINT 0.871 MILE NORTH OF THE HARTLAND-HARTFORD TOWN LINE AND EXTENDING NORTHERLY 0.195 MILE
SOUTHBOUND-BEGINNING AT A POINT 0.836 MILE NORTH OF THE HARTLAND-HARTFORD TOWN LINE AND EXTENDING NORTHERLY 0.198 MILE
LENGTH OF PROJECT 1038.38 FEET=0.197 MILE



Dated May 17, 1967
Stewart's Nursery, Inc.
By James Stewart President
Contractor
Virginia D. Henderson
By Order of Commissioner of Highways
Commissioner of Highways

828

CONVENTIONAL SIGNS

- COUNTY LINE
- TOWN LINE
- FENCE LINE
- STONE WALL
- UNFENCED PROPERTY
- GUARD RAIL
- TRAVELED WAY
- RAILROAD
- RETAINING WALL
- CENTER LINE
- SURVEY LINE
- CONVERT
- DROP INLET
- TROLLEY POLE
- POWER POLE
- TELEPHONE POLE
- TREES
- NEEDS

- GROUND ELEVATION DATA
- GRADE ELEVATION DATA
- CURVE DATA
- DEFLECTION OF ANGLE
 - DEGREE OF CURVE
 - RADIUS OF CURVE
 - TANGENT DISTANCE
 - LENGTH OF CURVE
 - EXTERNAL DISTANCE
 - POINT OF INTERSECTION
 - POINT OF CURVE
 - POINT OF TANGENT
 - POINT ON TANGENT
 - POINT ON SUB-TANGENT

- FA CONSTRUCTION IDENTIFICATION SIGNS
- SCALES
- TITLE 1/4"
 - TYPICAL 1/2"
 - PLAN 1/4"
 - PROFILE HORIZONTAL 1/4"
 - PROFILE VERTICAL 1/2"
 - CROSS-SECTIONS 1/4"

THESE PLANS ARE SUBJECT TO SUCH REVISIONS AS MAY BE REQUIRED BY THE BUREAU OF PUBLIC ROADS OR THE COMMISSIONER OF HIGHWAYS.

CONSTRUCTION IS TO BE CARRIED ON IN ACCORDANCE WITH THESE PLANS AND THE STANDARD SPECIFICATIONS FOR HIGHWAY AND BRIDGE CONSTRUCTION, DATED APRIL 1964, AS APPROVED BY THE BUREAU OF PUBLIC ROADS ON OCTOBER 12, 1964, INCLUDING ALL SUBSEQUENT APPROVED REVISIONS AND SUCH REVISED SPECIFICATIONS AND SPECIAL PROVISIONS AS ARE INCORPORATED IN THESE PLANS.

DEPARTMENT OF COMMERCE
BUREAU OF PUBLIC ROADS

APPROVED _____ DATE _____

DIVISION ENGINEER _____ DATE _____

PROJECT NO. I 91-135

SHEET 1 OF 8 SHEETS

APPROVED W.D. Goodhead DISTRICT ENGINEER DATE Dec. 22, 1966

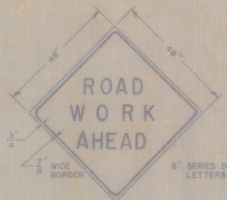
APPROVED James Stewart CONTRACTOR DATE 1/16/67

APPROVED Richard [unclear] DISTRICT ENGINEER DATE Jan. 3, 1967

APPROVED J. Chase DISTRICT ENGINEER DATE Jan. 11, 1967

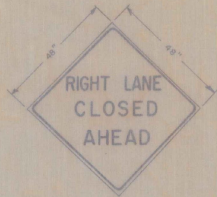
APPROVED E.H. [unclear] DISTRICT ENGINEER DATE 1/16/67

APPROVED [unclear] DISTRICT ENGINEER DATE 1/16/67



SIGN A

BLACK ON YELLOW
NON-REFLECTORIZED



SIGN B

BLACK ON YELLOW
NON-REFLECTORIZED



SIGN C

BLACK ON YELLOW
NON-REFLECTORIZED



6" SERIES D
LETTERS

THESE SIGNS CONFORM WITH THE NATIONAL STANDARDS SET FORTH IN THE UNIFORM MANUAL ON TRAFFIC CONTROL DEVICES (1961 EDITION) FOR CONSTRUCTION AND MAINTENANCE OPERATIONS. THEY ARE INTENDED FOR THE PROTECTION OF THE TRAVELING PUBLIC AS WELL AS THE CONTRACTOR'S FORCES ON HIGH-SPEED EXPRESSWAYS IT IS ESSENTIAL THAT THE CONDITION OF THE SIGNS AND THE METHOD OF DISPLAYING THEM BE GIVEN MAXIMUM CONSIDERATION.

BECAUSE THE PLANTING OF LANDSCAPE MATERIAL IS A PROGRESSIVE OPERATION, THE SIGNS MUST BE MOVED PERIODICALLY IN ACCORDANCE WITH THE REQUIREMENTS NOTED ON THE PLANS OR ORDERED BY THE ENGINEER.

- △ SIGNS SHALL BE MOUNTED ON MOVEABLE STANDARDS.
- △ WHEN IN USE THEY SHALL BE LOCATED ON THE SHOULDER 4 FEET OUT FROM THE EDGE OF THE PAVEMENT.
- △ SIGNS AND CONES SHALL NOT BE LEFT IN PLACE ON THE SHOULDER OR PAVEMENT DURING PERIODS WHEN WORK IS NOT UNDER WAY.

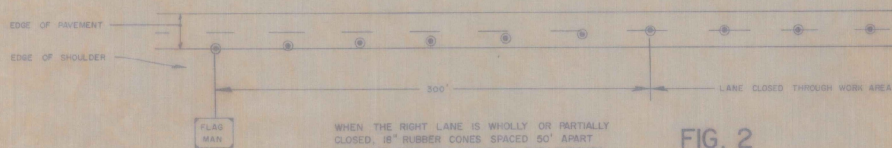


FIG. 2

WHEN THE RIGHT LANE IS WHOLLY OR PARTIALLY CLOSED, 18" RUBBER CONES SPACED 50' APART SHALL BE USED IN ADVANCE OF AND THROUGH THE WORK AREA AS SHOWN ABOVE. THE CONES SHALL BE MOVED ALONG WITH THE FLAGMAN AS THE WORK PROGRESSES.

THE SAME APPLIES TO THE LEFT HAND LANE WHEN IT IS WHOLLY OR PARTIALLY CLOSED.

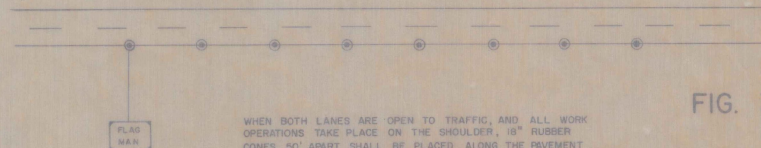


FIG. 3

WHEN BOTH LANES ARE OPEN TO TRAFFIC, AND ALL WORK OPERATIONS TAKE PLACE ON THE SHOULDER, 18" RUBBER CONES 50' APART SHALL BE PLACED ALONG THE PAVEMENT EDGE THROUGH THE WORK AREA AS SHOWN ABOVE. THE CONES SHALL BE MOVED ALONG WITH THE FLAGMAN AS THE WORK PROGRESSES.

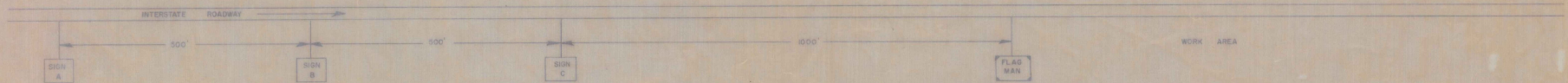


FIG. 1

SIGN "B" TO BE USED ONLY IF THE RIGHT LANE IS WHOLLY OR PARTIALLY CLOSED. (SEE FIG. 2 ABOVE) WHEN NOT USED, THE DISTANCE BETWEEN SIGNS "A" AND "C" SHALL BE 1000 FT.

THE SAME APPLIES TO THE LEFT HAND LANE WHEN IT IS WHOLLY OR PARTIALLY CLOSED.

AS THE WORK PROGRESSES ALONG THE HIGHWAY, THE FLAGMAN WILL MOVE WITH IT. WHEN THE DISTANCE BETWEEN SIGN "C" AND THE FLAGMAN BECOMES 1 MILE, ALL THE SIGNS SHALL BE MOVED FORWARD.

STATE OF VERMONT
VERMONT DEPARTMENT OF HIGHWAYS

HARTFORD

CONSTRUCTION
WARNING
SIGNS

SURVEYED BY: _____	DATE: _____
DRAWN BY: _____	DATE: _____
TRACED BY: _____	DATE: 8/23/65
PROJ. NO. I 91-1 (55)	
SHEET 2 OF 8	

QUANTITY

SHEET

SUMMARY OF QUANTITIES

AS PER PLANS		AS BUILT
QUANT.	UNIT	QUANT.
GROUND TOT.	ITEMS	GROUND TOT.
3002	c.v. Borrow	104
2.15	A. Selective Thinning & Trimming	601
6000	lbs. Seeding	611
50000	lbs. Fertilizer	615
2.13	T. Ground Limestone	616
46300	cu. y. Top Soil	621
2.5	T. Mulch	622
40000	cu. y. Wood Chip Mulch	625
ea.	Planting Trees, Vines, & Shrubs	631
EVERGREEN TREES (8'-10') (B.B.)		
22	ea. Red Pine (Pinus resinosa)	6311
EVERGREEN TREES (2'-3') (B.B.)		
3	ea. Mugho Pine (Pinus mugho mugho)	6312
57	ea. Pfitzer Juniper (Juniperus chinensis pfitzeriana)	6314
EVERGREEN TREES (6'-8') (B.B.)		
7	ea. White Pine (Pinus strobus)	6315
DECIDUOUS TREES (2 1/2"-3" cal.) (B.B.)		
16	ea. Sugar Maple (Acer saccharum)	6316
9	ea. Red Maple (Acer rubrum)	6317
2	ea. Beech (Fagus grandifolia)	6318
1	ea. Linden (Tilia cordata)	6319
4	ea. Green Ash (Fraxinus pennsylvanica)	6310
DECIDUOUS TREES (10'-12') (B.B.)		
51	ea. Sugar Maple (Acer saccharum)	6311
19	ea. Red Maple (Acer rubrum)	6312
2	ea. Beech (Fagus grandifolia)	6315
4	ea. Linden (Tilia cordata)	6314
6315		
6	ea. White Birch (Betula papyrifera)	6316
DECIDUOUS SHRUBS (2'-3') (B.R.)		
6317		
228	ea. Fragrant Sumac (Rhus aromatica)	6318
DECIDUOUS SHRUBS (1 1/2"-2") (B.R.)		
40	ea. Coralberry (Symphoricarpos orbiculatus)	6319
10	C.V. TRENCH EXCAV.	106A
3	L.F. 12" ASPH. COATED METAL PIPE	424B
1	EA. DROPP INLET	531A
1	EA. DROPP INLET	531

DETAILED SUMMARY OF QUANTITIES

AS PER PLANS		LOCATION		AS BUILT
ITEM NO.	QUAN.	NAME	STA. TO STA.	QUAN.
N.B. REST AREA				
631-6	2	Sugar Maple (2 1/2"-3" cal.)	R.A. 7+50	LI.
	3	" " "	R.A. 8+30	LI.
631-7	3	Red Maple (2 1/2"-3" cal.)	R.A. 7+90	LI.
631H	7	Sugar Maple (10'-12')	R.A. 6+35	9+10 LI.
	11	" " "	T.L. 3+10	6+20 LI.
	3	" " "	T.L. 3+40	RI.
631I2	1	Red Maple (10'-12')	T.L. 6+70	RI.
	1	" " "	T.L. 5+90	RI.
	1	" " "	T.L. 5+40	RI.
631H4	2	Linden (10'-12')	R.A. 5+80	LI.
631-5	7	White Pine (6'-8')	R.A. 6+90	LI.
631H8	95	Fragrant Sumac	R.A. 3+00	4+00 LI.
631-3	3	Mugho Pine	R.A. 6+80	LI.
631-4	16	Pfitzer Juniper	R.A. 6+30	LI.
	16	" " "	R.A. 6+60	LI.
	25	" " "	R.A. 6+80	LI.
S.B. REST AREA				
631-6	4	Sugar Maple (2 1/2"-3")	R.A. 4+60	4+95 RI.
	2	" " "	R.A. 5+00	5+22 RI.
	2	" " "	R.A. 6+60	7+00 LI.
	3	" " "	R.A. 7+35	8+20 LI.
631-7	5	Red Maple (2 1/2"-3")	R.A. 4+30	4+60 RI.
	1	" " "	R.A. 7+70	LI.
631H	4	Sugar Maple (10'-12')	R.A. 2+10	3+70 RI.
	1	" " "	R.A. 4+80	RI.
	4	" " "	R.A. 5+80	6+80 RI.
	8	" " "	R.A. 5+45	6+50 LI.
	1	" " "	R.A. 7+25	RI.
	9	" " "	R.A. 8+00	11+00 RI.
	3	" " "	T.L. 4+25	6+25 LI.
631I2	3	Red Maple (10'-12')	T.L. 3+40	4+30 RI.
	5	" " "	T.L. 6+20	8+20 RI.
	2	" " "	R.A. 4+00	4+50 RI.
	1	" " "	R.A. 5+20	RI.
	1	" " "	R.A. 6+80	RI.
	1	" " "	R.A. 7+30	RI.
	1	" " "	R.A. 7+80	RI.
	2	" " "	R.A. 8+35	RI.
631H4	2	Linden (10'-12')	R.A. 9+00	LI.
631-8	2	Beech (2 1/2"-3)	R.A. 7+80	RI.
631-9	1	Linden (2 1/2"-3)	R.A. 6+50	LI.
631H3	2	Beech (10'-12')	R.A. 6+60	RI.
631-10	2	Green Ash (2 1/2"-3")	R.A. 7+00	LI.
	2	" " "	R.A. 7+00	RI.

DETAILED SUMMARY OF QUANTITIES

AS PER PLANS		LOCATION		AS BUILT
ITEM NO.	QUAN.	NAME	STA. TO STA.	QUAN.
104	100 CY	BORROW	N.B. REST AREA	
106A	16 CY	TRENCH EXCAV.	" " "	
424B	36 LF	12" ASPH. COATED METAL PIPE	" " "	
531A	1	DROPP INLET - WITH GRATE	" " "	
531	1	DROPP INLET - WITH COVER	" " "	
631H6	3	White Birch (10'-12')	R.A. 4+25	LI.
	3	" " "	R.A. 6+10	RI.
631-1	3	Red Pine (8'-10')	R.A. 3+00	4+00 RI.
	10	" " "	R.A. 4+20	5+50 RI.
	1	" " "	R.A. 5+35	LI.
	1	" " "	R.A. 6+40	LI.
	5	" " "	R.A. 9+00	10+00 RI.
	2	" " "	T.L. 7+50	8+00 RI.
631H8	58	Fragrant Sumac	R.A. 5+90	RI.
	75	" " "	R.A. 6+10	RI.
631H9	20	Coralberry	R.A. 5+70	RI.
	20	" " "	R.A. 6+30	RI.

DETAILED SUMMARY OF QUANTITIES

AS PER PLANS		LOCATION		AS BUILT
ITEM NO.	QUAN.	NAME	STA. TO STA.	QUAN.
GENERAL NOTES				
A. SIZE OF PLANT MATERIAL				
1. Evergreen trees 8'-10' in height shall have a spread of 5-6 ft.				
2. Evergreen trees 6'-8' in height shall have a spread of 4-5 ft.				
3. Evergreen trees 2'-3' in height shall have a spread of 1 1/2'-2 ft.				
4. Deciduous trees 2 1/2"-3" in caliber shall be 12'-16 ft. in height with a maximum height of 16 ft.				
5. Deciduous trees 10'-12' in height shall be 1 1/2"-1 3/4" in caliber with a maximum height of 14 ft.				
6. Deciduous shrubs 2'-3' in height shall have 12" min. root length and shall have 3 cones.				
7. Deciduous shrubs 1 1/2"-2" in height shall have not less than 3 cones.				
B. PLANTING INSTRUCTIONS				
1. "B.B." denotes "Balled & Bypassed"				
2. "B.R." denotes "Bare Root"				
3. "R.A." denotes "Rest Area" stationing.				
4. "T.L." denotes "Truck Lane" stationing.				
5. All evergreens shall have dormant buds and secondary needles.				
6. All measurements shall conform to the "American Standard For Nursery Stock" dated March 1955 for height, spread and caliber for each type, kind or size of plant material.				
7. Trees which will have an ultimate trunk diameter in excess of 4" shall be planted at least 30 ft. from the edge of the pavement.				

HARTFORD

- Key**
- 4 Deciduous Trees 2 1/2' - 3"
 - 5 Sugar Maple - 5
 - 6 Red Maple - 3
 - 6 Deciduous Trees 10' - 12'
 - 7 Sugar Maple - 21
 - 7 Red Maple - 3
 - 9 Linden - 2
 - 2 Deciduous Shrubs 2' - 3'
 - 2 Fragrant Sumac - 95

- Evergreen Trees 6' - 8'
- 8 White Pine - 7
- Evergreen Shrubs 2' - 3'
- 3 Mugho Pine - 3
- 1 Pfitzer Juniper - 57

- Sugar Maple 2 1/2' - 3"
- Sta. R. A. 7+50 Lt. - 2
- Sta. R. A. 8+30 Lt. - 3
- Red Maple 2 1/2' - 3"
- Sta. R. A. 7+50 Lt. - 3
- Sugar Maple 10' - 12'
- Sta. R. A. 6+35 - 9+10 Lt. - 7
- Sta. T. L. 3+10 - 6+20 Lt. - 11
- Sta. T. L. 3+40 Rt. - 3
- Red Maple 10' - 12'
- Sta. T. L. 6+70 Rt. - 1
- Sta. T. L. 5+90 Rt. - 1
- Sta. T. L. 5+40 Rt. - 1
- White Pine 6' - 8'
- Sta. R. A. 6+90 Lt. - 7

- Linden 10' - 12'
- Sta. R. A. 5+80 Lt. - 2
- Fragrant Sumac 2' - 3'
- Sta. R. A. 3+00 - 4+00 Lt. - 95
- Mugho Pine
- Sta. R. A. 6+80 Lt. - 3
- Pfitzer Juniper
- Sta. R. A. 6+30 Lt. - 16
- Sta. R. A. 6+60 Lt. - 16
- Sta. R. A. 6+80 Lt. - 25



KEY Deciduous Trees 2 1/2" - 3"

- 4 Sugar Maple - 11
- 5 Green Ash - 4
- 6 Linden - 1
- 7 Red Maple - 6
- 9 Beech - 2

Deciduous Trees 10'-12'

- 8 White Birch - 6
- 11 Linden - 2
- 12 Red Maple - 16
- 13 Sugar Maple - 30
- 14 Beech - 2

KEY Deciduous Shrubs 2'-3'

- 3 Fragrant Sumac - 133
- Deciduous Shrubs 1 1/2" - 2"
- 2 Coralberry - 40
- Evergreen Trees 8'-10'
- 15 Red Pine - 22

- Fragrant Sumac 2'-3'**
 Sta. R.A. 5+90 Rt. - 58
 Sta. R.A. 6+10 Rt. - 75
- Sugar Maple 2 1/2" - 3"**
 Sta. R.A. 4+60 - 4+95 Rt. - 4
 Sta. R.A. 6+00 - 6+22 Rt. - 2
 Sta. R.A. 6+60 - 7+00 Lt. - 2
 Sta. R.A. 7+35 - 8+20 Lt. - 3

- Coralberry**
 Sta. R. A. 5+70 Rt. - 20
 Sta. R. A. 6+30 Rt. - 20
- Linden 10'-12'**
 Sta. R. A. 9+00 Lt. - 2

- Green Ash 2 1/2" - 3"**
 Sta. R.A. 7+00 Lt. - 2
 Sta. R.A. 7+00 Rt. - 2
- Linden 2 1/2" - 3"**
 Sta. R.A. 6+50 Lt. - 1
- Red Maple 2 1/2" - 3"**
 Sta. R.A. 4+30 - 4+60 Rt. - 5
 Sta. R.A. 7+70 Lt. - 1

- Red Maple 10'-12'**
 Sta. T.L. 3+40 - 4+30 Rt. - 3
 Sta. T.L. 6+20 - 8+20 Rt. - 5
 Sta. R. A. 4+00 - 4+50 Rt. - 2
 Sta. R. A. 5+20 Rt. - 1
 Sta. R. A. 6+80 Rt. - 1
 Sta. R. A. 7+30 Rt. - 1
 Sta. R. A. 7+80 Rt. - 1
 Sta. R. A. 8+35 Rt. - 2

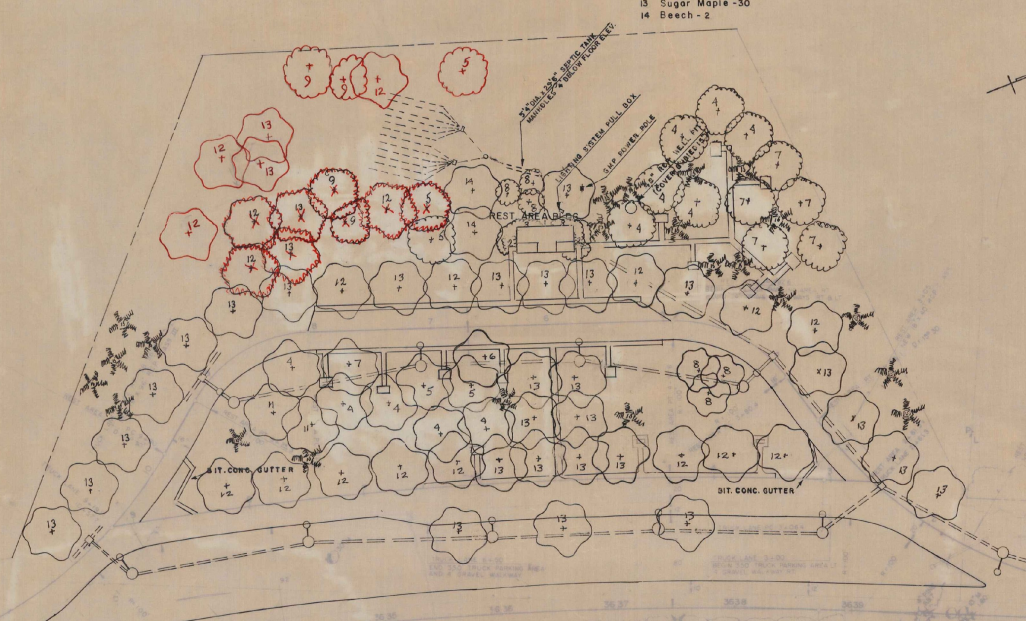
- Beech 2 1/2" - 3"**
 Sta. R.A. 7+80 Rt. - 2

- White Birch 10'-12'**
 Sta. R. A. 4+25 Lt. - 3
 Sta. R.A. 6+10 Rt. - 3

- Sugar Maple 10'-12'**
 Sta. R. A. 2+10 - 3+70 Rt. - 4
 Sta. R. A. 4+50 Rt. - 1
 Sta. R. A. 5+60 - 6+50 Rt. - 4
 Sta. R. A. 5+45 - 6+50 Lt. - 8
 Sta. R. A. 7+25 Rt. - 1
 Sta. R. A. 8+00 - 11+00 Rt. - 9
 Sta. T. L. 4+25 - 6+25 Lt. - 3

- Red Pine 8'-10'**
 Sta. R. A. 3+00 - 4+00 Rt. - 3
 Sta. R.A. 4+25 - 5+50 Rt. - 10
 Sta. R. A. 5+35 Lt. - 1
 Sta. R. A. 6+40 Lt. - 1
 Sta. R. A. 9+00 - 10+00 Rt. - 5
 Sta. T. L. 7+50 - 8+00 Rt. - 2

- Beech 10'-12'**
 Sta. R. A. 6+60 Rt. - 2



BEGIN PROJECT I 91-1(35)
STA. 3631+12.14

END PROJECT I 91-1(35)
STA. 3641+56.8

GMP POWER POLE 3638+86 RT88
2

SITUMINOUS CONCRETE CURB
 CAR LANE 3+50 LT. TO 9+50 LT.
 5+20 RT. TO 6+0 RT.
 TRUCK LANE 3+50 RT. TO 8+75 RT.

NORTHBOUND SOUTHBOUND REST AREA
HARTFORD

DESIGNED BY: _____ DATE: _____
 DRAWN BY: _____ DATE: _____
 TRACED BY: _____ DATE: _____

PROJ. I NO. 91-1 (35)
SHEET 8 OF 8

Vermont Agency of
Transportation
PHASE 1-INTERSTATE
#122302-01
INITIALS
HANGER 407 ZONE

1968

Hartford
I-91-1 (35)

1968