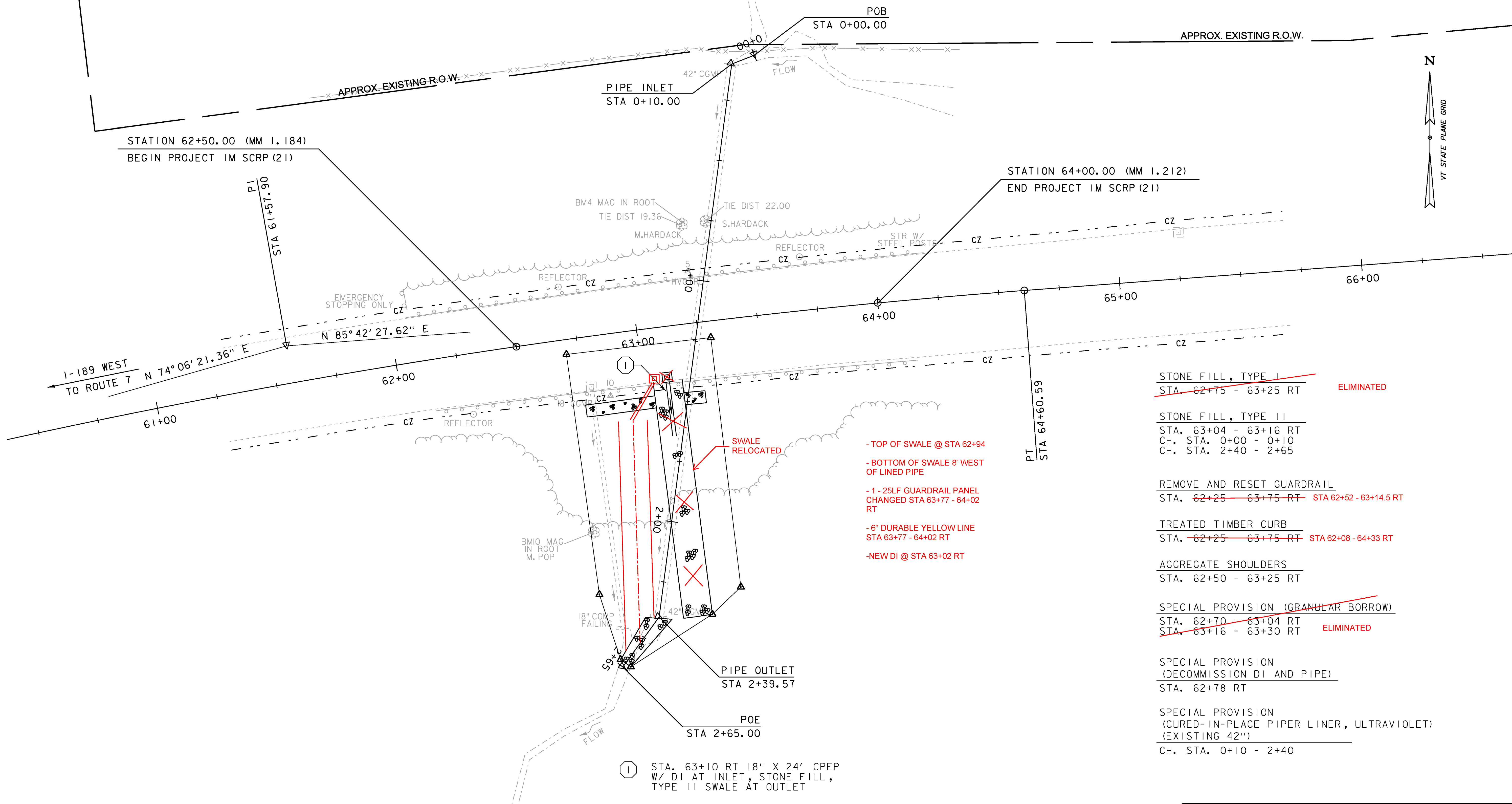


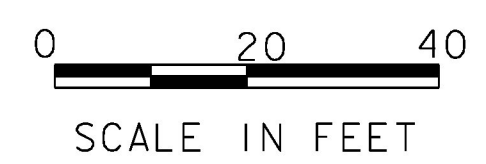
UVM STATE AGRICULTURE COLLEGE



- ~~STONE FILL, TYPE I~~  
STA. ~~62+75 - 63+25 RT~~ ELIMINATED
- STONE FILL, TYPE II  
STA. 63+04 - 63+16 RT  
CH. STA. 0+00 - 0+10  
CH. STA. 2+40 - 2+65
- REMOVE AND RESET GUARDRAIL  
STA. ~~62+25 - 63+75 RT~~ STA 62+52 - 63+14.5 RT
- TREATED TIMBER CURB  
STA. ~~62+25 - 63+75 RT~~ STA 62+08 - 64+33 RT
- AGGREGATE SHOULDERS  
STA. 62+50 - 63+25 RT
- ~~SPECIAL PROVISION (GRANULAR BORROW)~~  
STA. ~~62+70 - 63+04 RT~~  
STA. ~~63+16 - 63+30 RT~~ ELIMINATED
- SPECIAL PROVISION  
(DECOMMISSION DI AND PIPE)  
STA. 62+78 RT
- SPECIAL PROVISION  
(CURED-IN-PLACE PIPER LINER, ULTRAVIOLET)  
(EXISTING 42")  
CH. STA. 0+10 - 2+40

- TOP OF SWALE @ STA 62+94
- BOTTOM OF SWALE 8' WEST OF LINED PIPE
- 1 - 25LF GUARDRAIL PANEL CHANGED STA 63+77 - 64+02 RT
- 6" DURABLE YELLOW LINE STA 63+77 - 64+02 RT
- NEW DI @ STA 63+02 RT

① STA. 63+10 RT 18" X 24' CPEP W/ DI AT INLET, STONE FILL, TYPE II SWALE AT OUTLET



PROJECT NAME:	SOUTH BURLINGTON
PROJECT NUMBER:	IM SCRP(2I)
FILE NAME:	I6d064/Design/nul.dgn
PROJECT LEADER:	K. UPMAL
DESIGNED BY:	C. LEACH
PLAN SHEET	
PLOT DATE:	27-APR-2017
DRAWN BY:	C. LEACH
CHECKED BY:	M. BOOKER
SHEET	12 OF 30