

GPS CONTROL POINTS

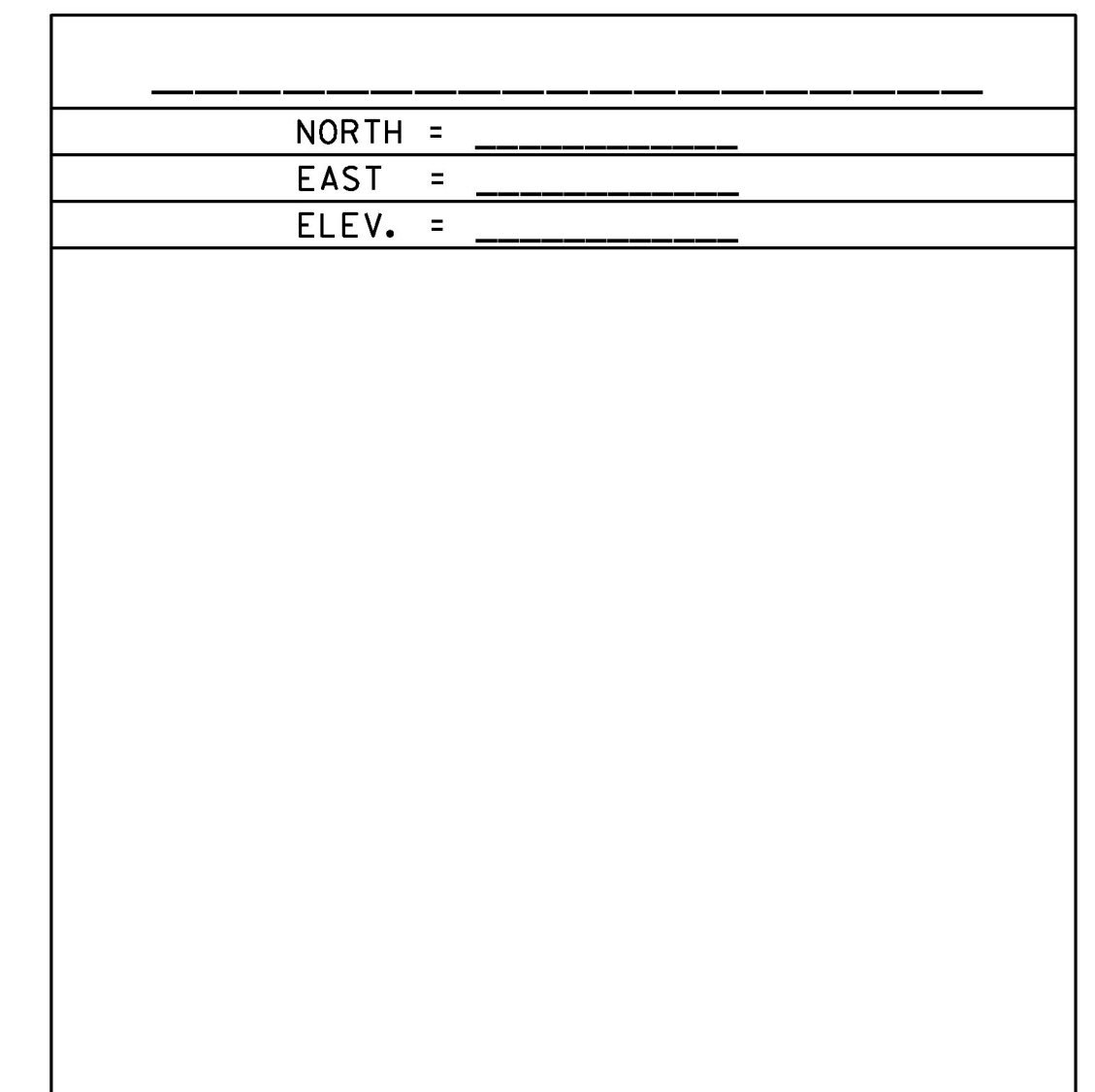
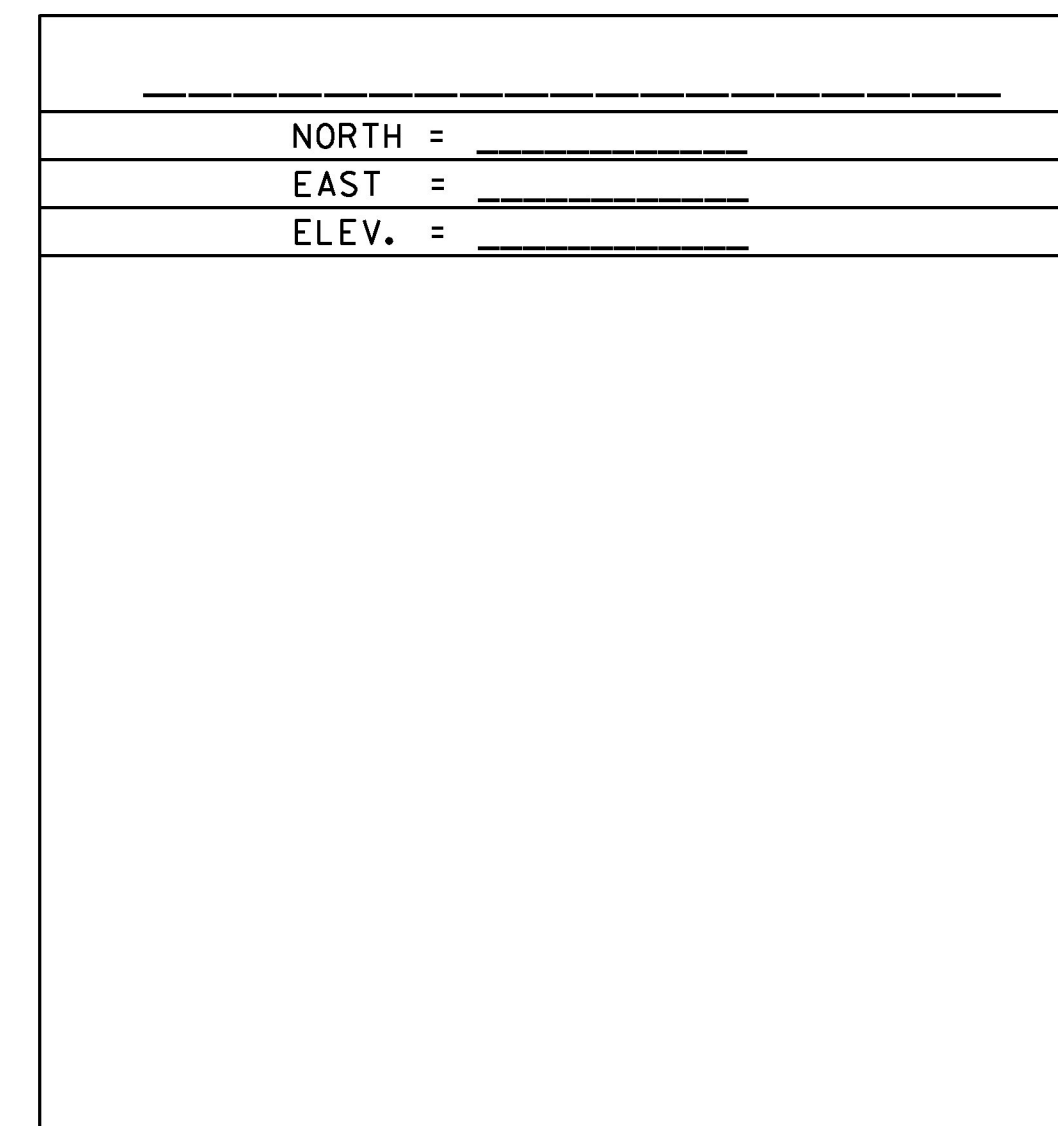
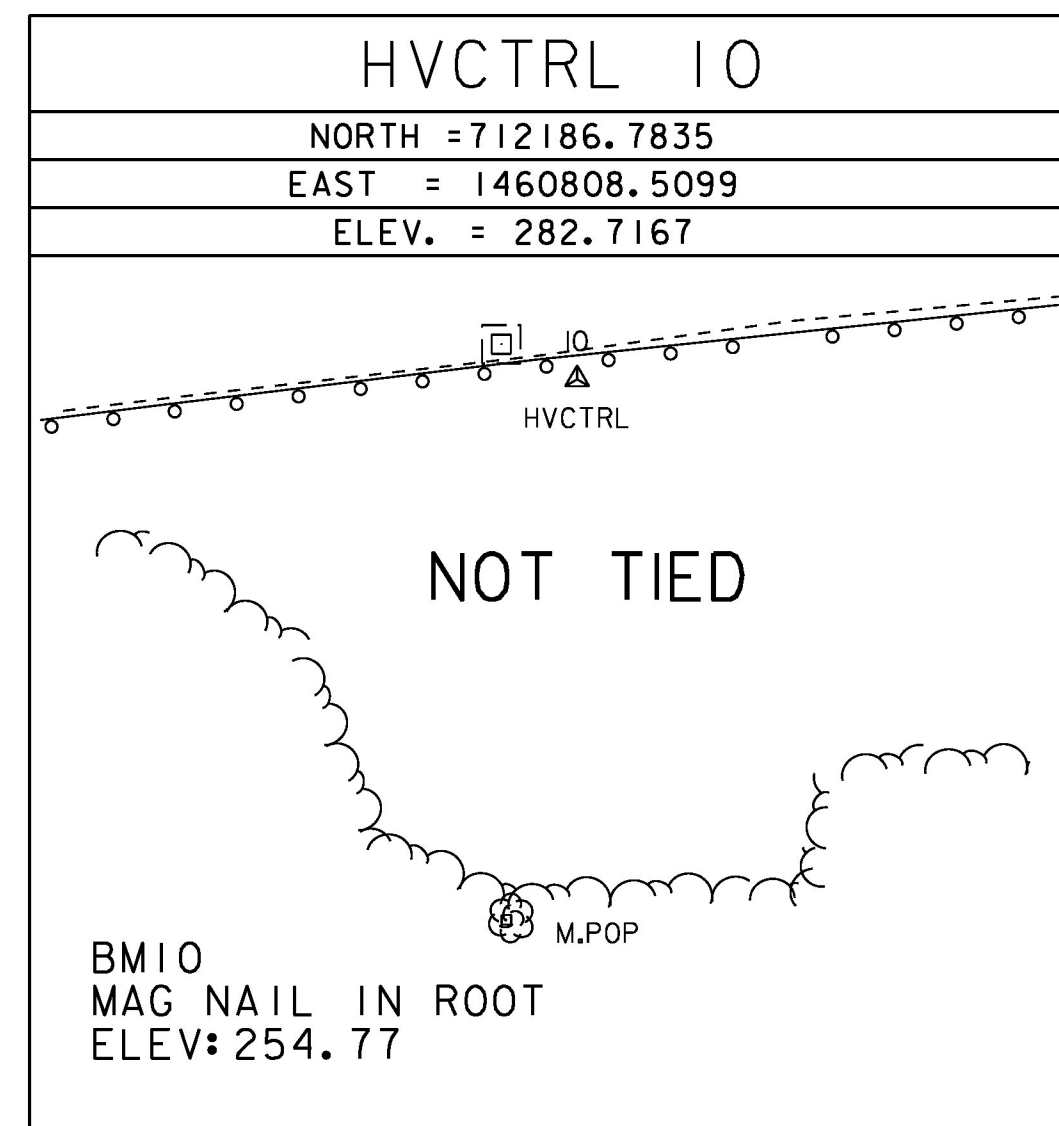
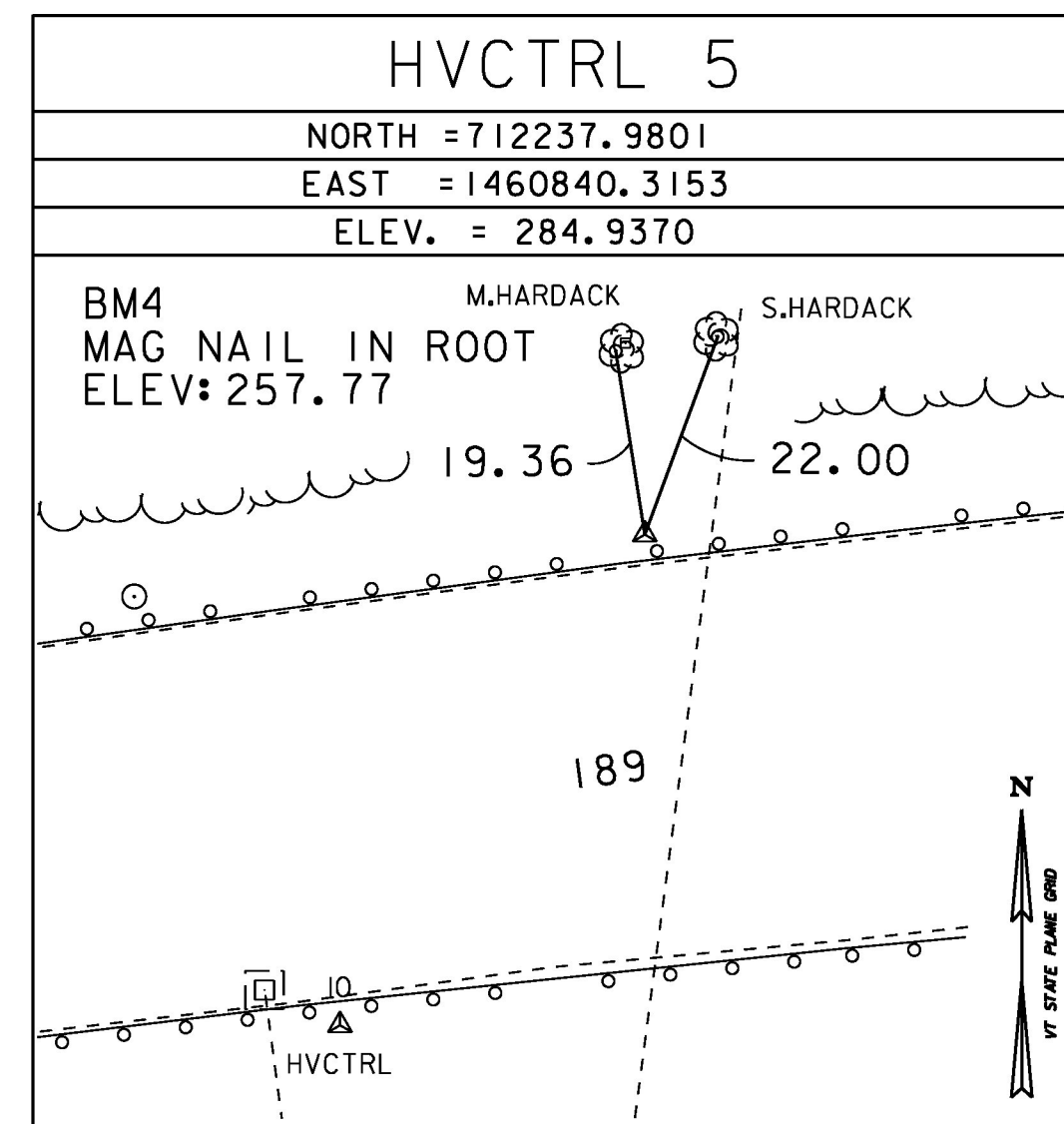
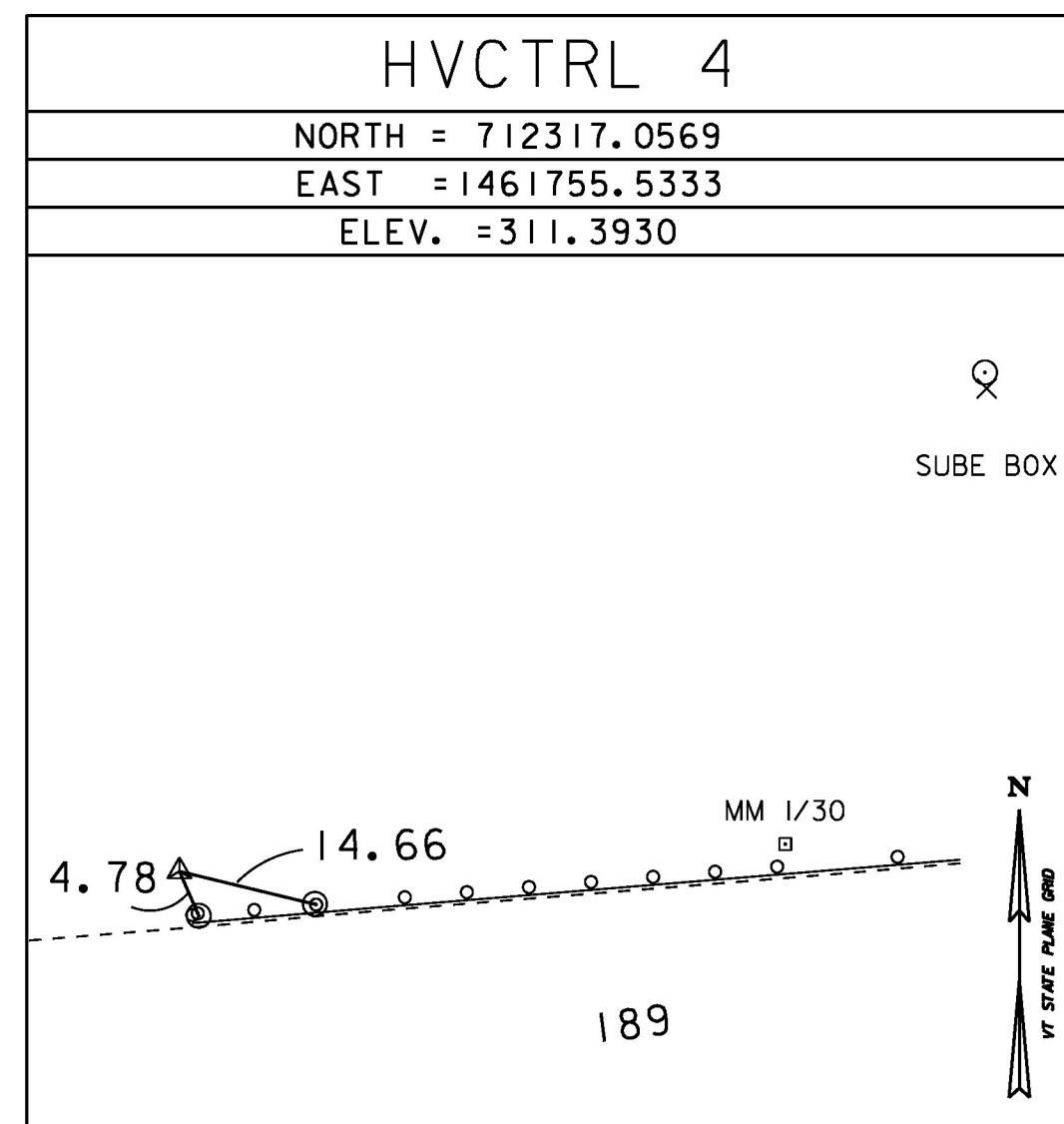
HVCTRL #1
 EXIT 13 AZ MK
 NORTH=714647.3765
 EAST=1461628.7990
 ELEV=301.8400

SOUTH BURLINGTON, VT.
 TO REACH FROM THE I-189 BRIDGE OVER I-89 GO N ALONG I-89 NB FOR 0.8 MI TO THE MARK ON THE LEFT IN THE MEDIAN, JUST S OF A U-TURN. THE MARK IS FLUSH WITH GROUND IN THE TOP OF A 30 CM DIA CONCRETE MONUMENT. IT IS 3.6 M E OF AND ABOUT 0.6 M LOWER THAN THE I-89 SB E EDGE OF PAVEMENT, 9.0 M W OF THE I-89 NB W EDGE OF PAVEMENT, 6.2 M S OF THE CL OF THE U-TURN, 5.8 M SW OF A U-TURN SIGN, 20.8 M N OF THE MOST EASTERLY POST FOR A SPEED LIMIT SIGN, AND 0.3 M S OF A FIBERGLASS WITNESS.

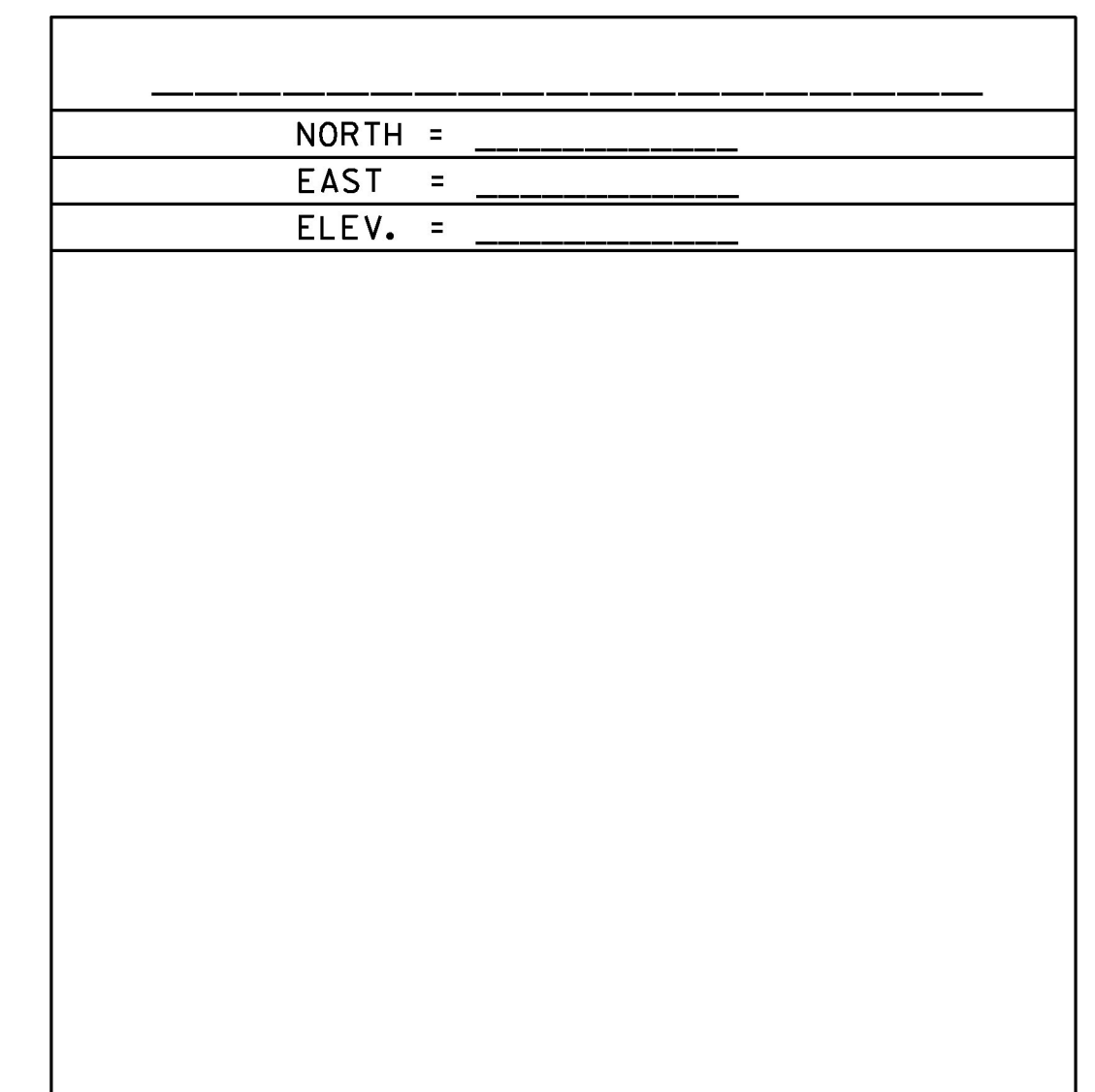
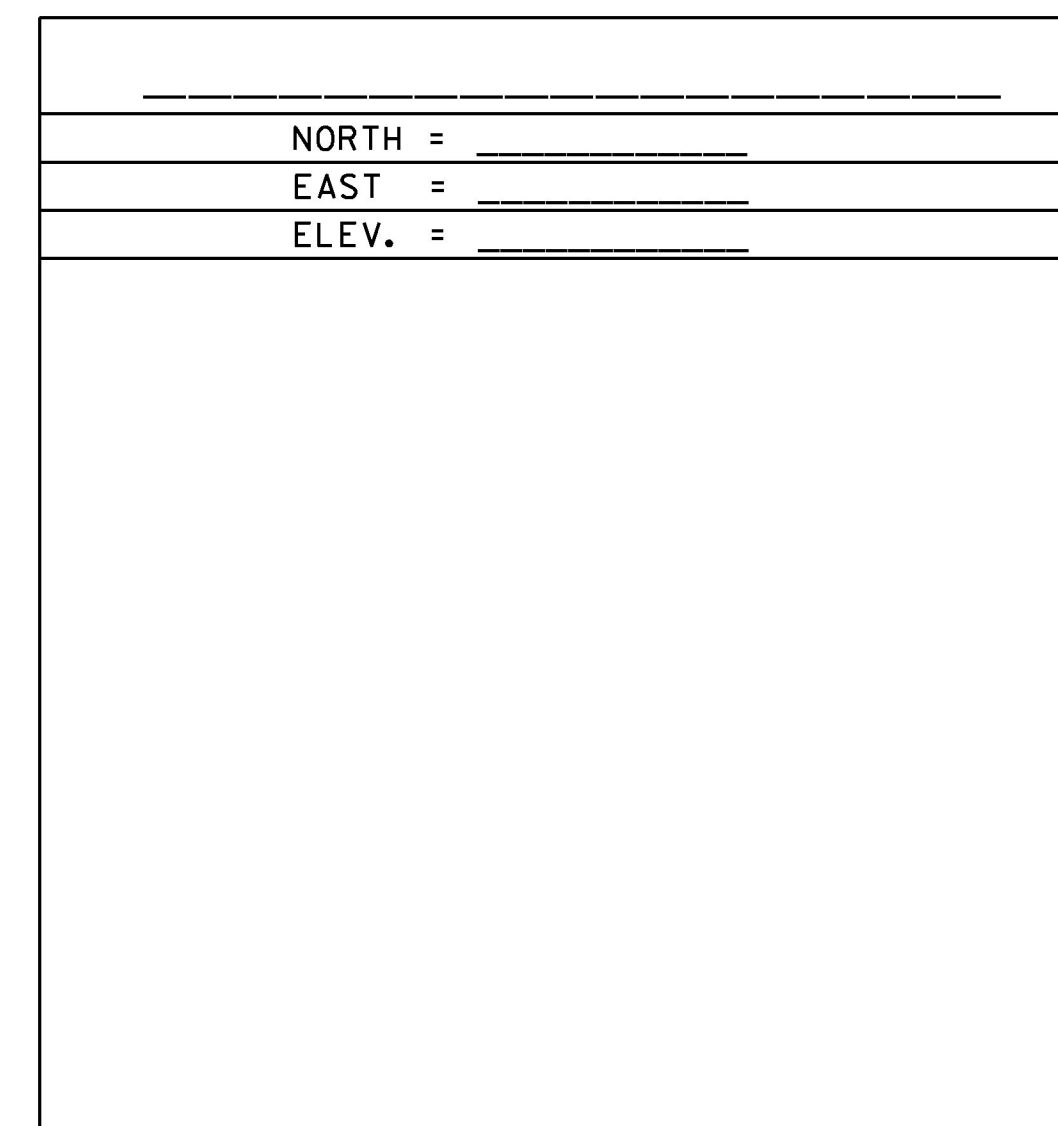
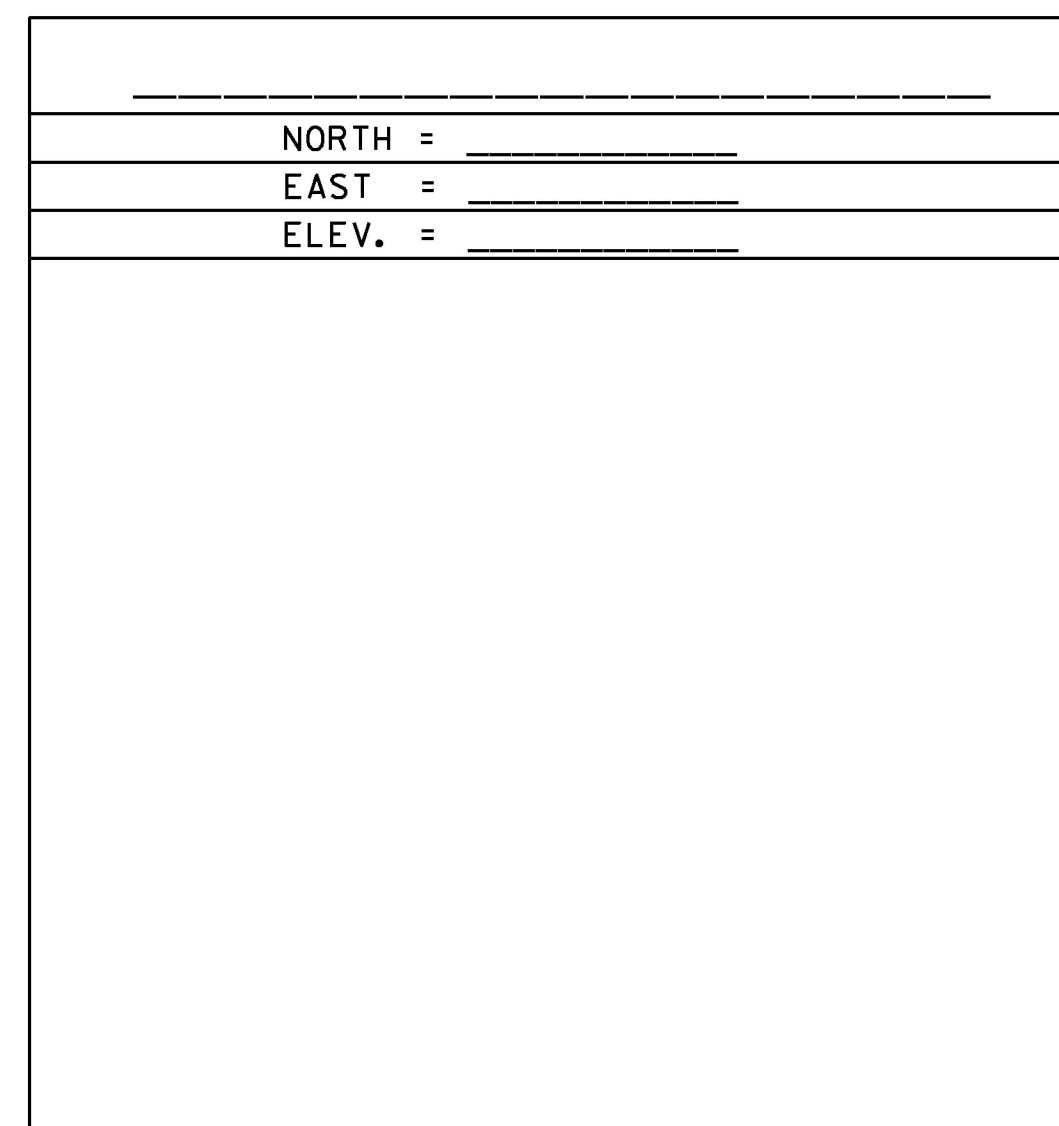
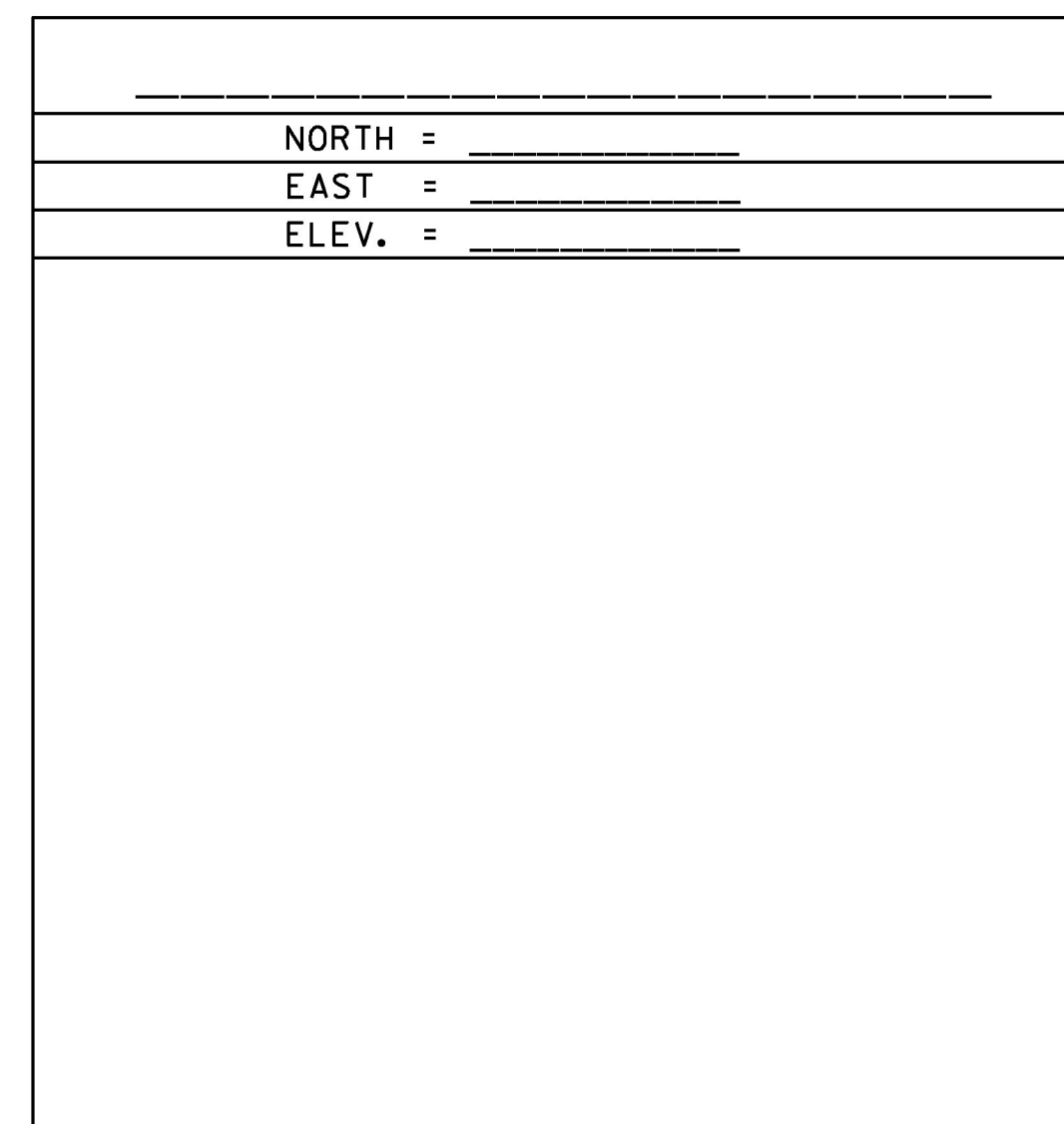
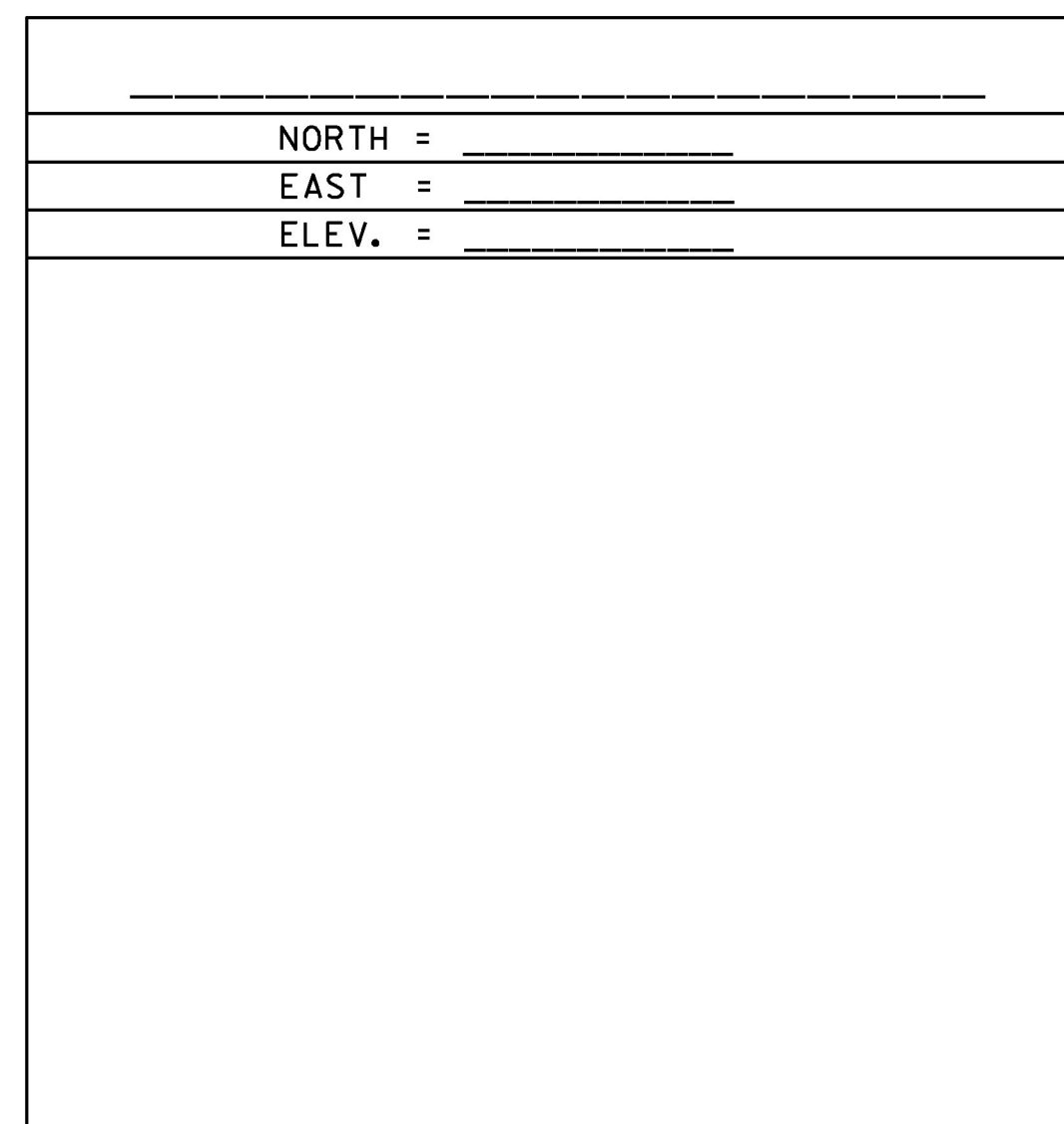
HVCTRL #2
 EXIT 13
 NORTH=716909.1305
 EAST=1461404.7970
 ELEV=311.1110

SOUTH BURLINGTON, VT.
 0.4 MI NORTH OF EXIT 13 IN THE MEDIAN.
 IT IS 6.4 M (21.0 FT) EAST OF AND ABOUT 0.6 M (2.0 FT) LOWER THAN THE I-89 SOUTHBOUND EAST EDGE OF PAVEMENT, 6.4 M (21.0 FT) WEST OF THE I-89 NORTHBOUND WEST EDGE OF PAVEMENT, 13.8 M (45.3 FT) SOUTH OF THE CENTERLINE OF A U-TURN, 5.0 M (16.4 FT) WEST SOUTHWEST OF A U-TURN SIGN, AND 0.3 M (1.0 FT) SOUTH OF A FIBERGLASS WITNESS POST.

TRAVERSE TIES



ALIGNMENT TIES



DATUM	
VERTICAL	NAVD 88
HORIZONTAL	NAD 83 (2011)
ADJUSTMENT	COMPASS

PROJECT NAME: SOUTH BURLINGTON	
PROJECT NUMBER: IM SCR(21)	
FILE NAME: I6d064/Survey/t1.dgn	PLOT DATE: 27-APR-2017
PROJECT LEADER: K. UPMAL	DRAWN BY: VTRANS
DESIGNED BY: VTRANS	CHECKED BY: G. HITCHCOCK
TIE SHEET	SHEET 7 OF 30