

738 IS THE TOTAL NUMBER OF BARS IF THE 8 - 7BE01 BARS ARE INCLUDED. PLEASE VERIFY AND REVISE ACCORDINGLY.

DECK REINFORCEMENT PLAN - SPANS 2 THRU 4
CONTRACT DWG. REF. 20 DF 49

Bar Mark	Qty	Size	Total Length	Type	A'	B'	C'	D'	E'	F'	G'	H'	I'	J'	K'	L'	M'	N'
5BE01a	2	#5	3'-9"	0			3'-9"											
Varies To																		
5BE01aa	2	#5	17'-11"	0			17'-11"											
5BE01a	2	#5	4'-3"	0			4'-3"											
Varies To																		
5BE02r	2	#5	18'-3"	0			18'-3"											
5BE03	1054	#5	5'-8 3/4"	DM1			0'-10"	1'-4"	1'-5"	1'-3 3/4"	0'-10"						1'-6 1/4"	
5BE04a	2	#5	1'-2"	0			1'-2"											
Varies To																		
5BE04af	2	#5	18'-1"	0			18'-1"											
5BE05a	2	#5	1'-8"	0			1'-8"											
Varies To																		
5BE05x	2	#5	20'-5"	0			20'-5"											
5BE06	32	#5	3'-1" 17				1'-4"											
5BE07a	2	#5	3'-4"	0			3'-4"											
Varies To																		
5BE07e	2	#5	6'-8"	0			6'-8"											

Bar Mark	Qty	Size	Total Length	Type	A'	B'	C'	D'	E'	F'	G'	H'	I'	J'	K'	L'	M'	N'
5BE08a	2	#5	3'-4"	0			3'-4"											
Varies To																		
5BE08h	2	#5	6'-8"	0			6'-8"											
7BE01a	2	#7	1'-8"	0			1'-8"											
Varies To																		
7BE01h	2	#7	5'-5"	0			5'-5"											

SHOP DRAWING REVIEW

REVIEWED AS REQUIRED BY THE CONSTRUCTION CONTRACT DOCUMENTS AND APPROVED, BUT ONLY FOR CONFORMANCE TO THE DESIGN CONCEPT OF THE WORK, AND SUBJECT TO FURTHER LIMITATIONS AND REQUIREMENTS CONTAINED IN THE CONSTRUCTION CONTRACT DOCUMENTS.

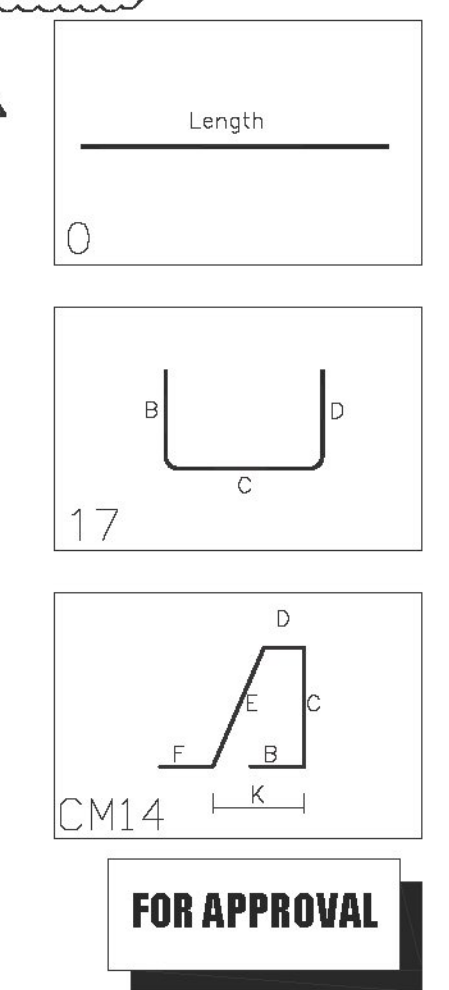
REJECTED REVISE AND RESUBMIT APPROVED AS NOTED

CORRECTIONS OR COMMENTS MADE ON THE SHOP DRAWINGS DURING THIS REVIEW DO NOT RELIEVE CONTRACTOR FROM COMPLIANCE WITH REQUIREMENTS OF THE DRAWINGS AND SPECIFICATIONS. THIS CHECK IS ONLY FOR REVIEW OF GENERAL CONFORMANCE WITH THE DESIGN CONCEPT OF THE PROJECT AND GENERAL COMPLIANCE WITH THE INFORMATION GIVEN IN THE CONTRACT DOCUMENTS. THE CONTRACTOR IS RESPONSIBLE FOR CONFIRMING AND CORRELATING ALL QUANTITIES AND DIMENSIONS, SELECTING FABRICATION PROCESSES AND TECHNIQUES OF CONSTRUCTION, COORDINATING THEIR WORK WITH THAT OF ALL OTHER TRADES, AND PERFORMING THEIR WORK IN A SAFE AND SATISFACTORY MANNER.

CLD Consulting Engineers
540 Commercial Street
Manchester, NH 03101
603.988.9223

Job Number: 150223
Reviewed by: SRB
Date: 05/06/2016

Vermont Agency of Transportation
RECEIVED
ON: **May 6, 2016**
and Checked for
CONFORMANCE
BY: Jennifer Fitch DATE: 05/10/16



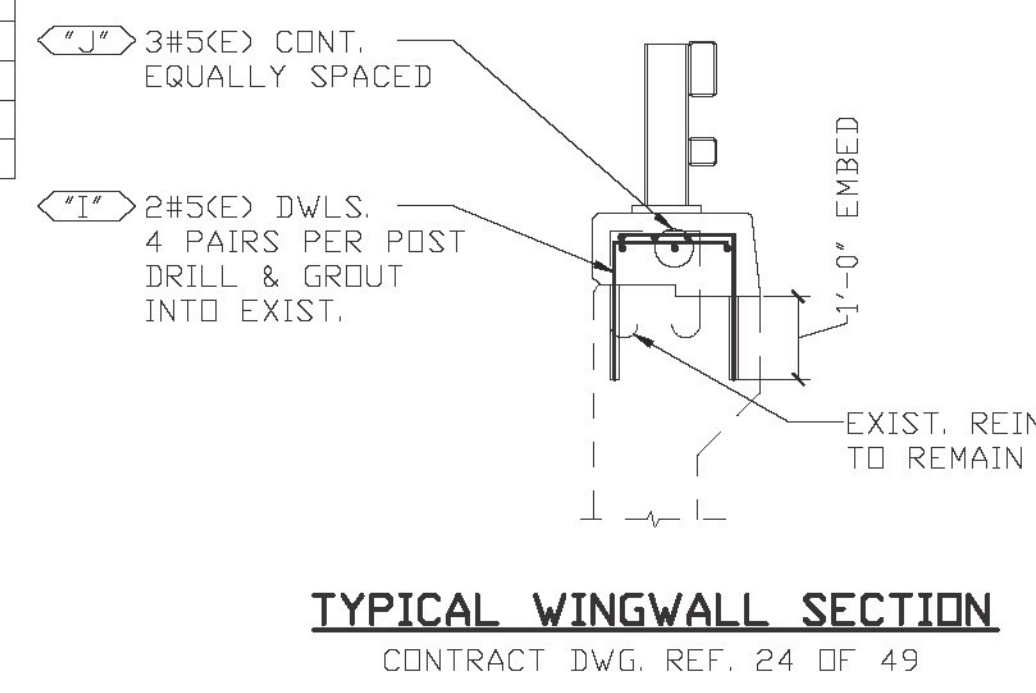
LEGEND:

CONT.-CONTINUOUS	E.E.-EACH END
TRANS.-TRANSVERSE	E.F.-EACH FACE
DWLS.-DWELS	F.F.-FRONT FACE
VERTS.-VERTICAL	R.F.-REAR FACE
HORIZ.-HORIZONTAL	E.W.-EACH WAY
T&B -TOP & BOTTOM	D.C.-DN CENTER
I.F.-INNER FACE	L.W.-LONG WAY
O.F.-OUTER FACE	S.W.-SHORT WAY

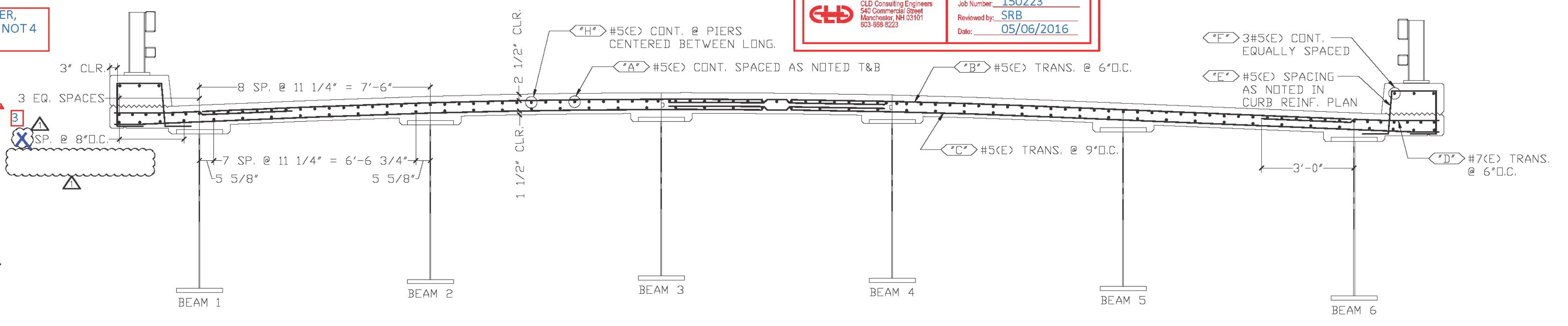
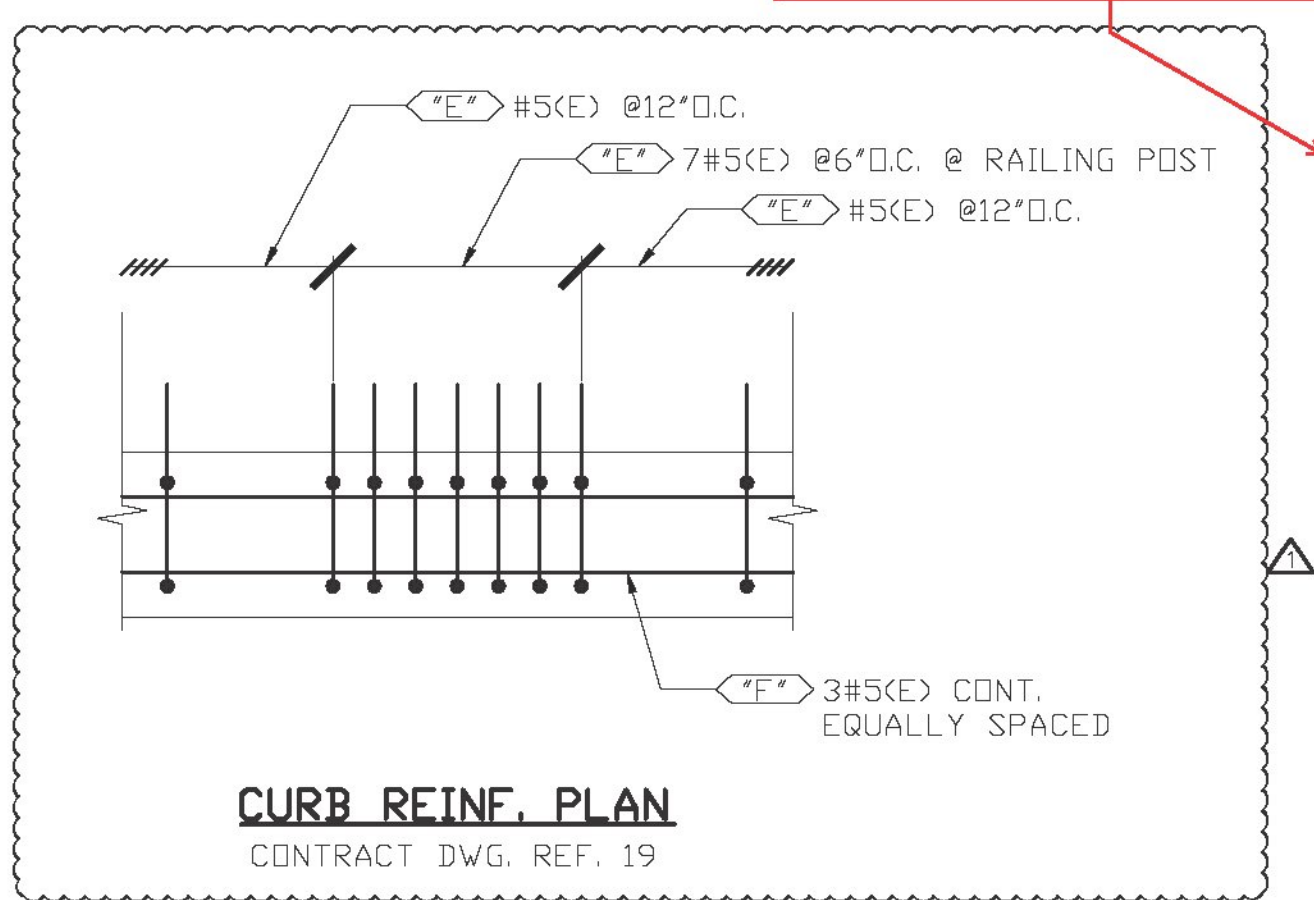
ELEVATIONS & DIMENSIONS SHOWN ON THIS DWG. ARE FOR REINF. DETAILING PURPOSES ONLY AND ARE NOT INTENDED FOR DIMENSIONAL CONSTRUCTION.

EPOXY REINF. BARS ASTM A615 GRADE 60, MARKED (E)

VERIFICATION OF UNCLEAR INFORMATION MAY BE REQUESTED ON THIS DRAWING. SHOULD VERIFICATION BE LEFT UN-ADDRESSED IT WILL REMAIN AS SHOWN AND ASSUME TO BE CORRECT.



YES - DRAWN CORRECTLY. HOWEVER, THERE ARE 3 SPACES WITH 4 BARS, NOT 4 SPACES. PLEASE REVISE.



ALL REINF. EPOXY

SECTION A
CONTRACT DWG. REF. A / 19 OF 49

6			
5			
4			
3			
2	5/6/16	REVISD PER APPROVAL / FOR APPROVAL	
1	5/3/16	FOR APPROVAL	
DATE	REV.#	SENT FOR	
DIMENSION		2000 7TH STREET SCOTLAND, N.Y. 13209	
DIMENSION FABRICATORS INC.		PH: (518) 374-1936 FAX: (518) 374-4835 www.dimensionfabricators.com	
STRUCTURE:	VTAOT IRASBURG IM DECK (46)		
LOCATION:	INTERSTATE 91 (PRINCIPLE ARTERIAL) BRIDGE NO. 107N		
ARCHITECT:	TOWN OF IRASBURG, COUNTY OF ORLEANS		
ENGINEER:	CLD CONSULTING ENGINEERS		
CUSTOMER:	J.P. SICARD, INC.		
DRAWN BY:	DATE:	DPI #	
CMB	5/2/16	9737	
DRAWING COVERS		DRAWING #	
DECK SLAB - SPANS 2-4		B	