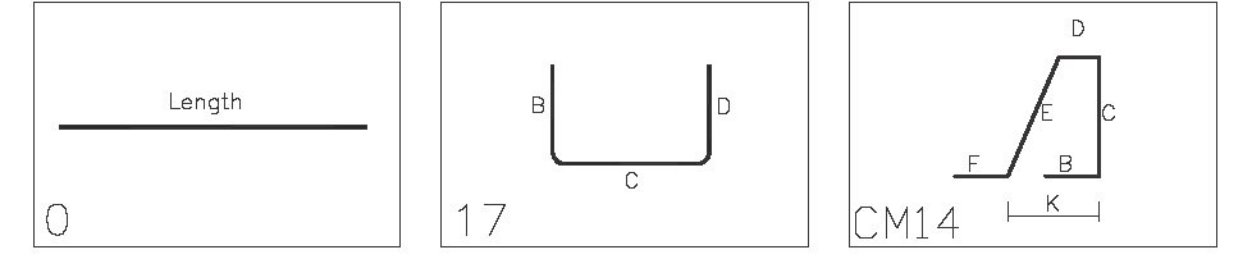


DECK REINFORCEMENT PLAN - SPAN #1
CONTRACT DWG. REF. 19 OF 49

Bar Mark	Qty	Size	Total Length	Type	X'	Y'	Z'	BAR LIST																
5AE01a	2	#5	3'-9"	0				1'	1'	1'	1'	1'	1'	1'	1'	1'	1'	1'	1'	1'	1'	1'	1'	
5AE01aa	2	#5	17'-11"	0				17'-11"																
5AE02a	2	#5	4'-3"	0				4'-3"																
5AE02r	2	#5	18'-3"	0				18'-3"																
5AE03a	2	#5	1'-2"	0				1'-2"																
5AE03af	2	#5	18'-1"	0				18'-1"																
5AE04a	2	#5	1'-8"	0				1'-8"																
5AE04x	2	#5	20'-5"	0				20'-5"																
5AE05	222	#5	5'-8 1/2"	DWT	4			0'-10"	1'-4"	1'-5"	1'-3 1/2"	0'-10"												
5AE06	40	#5	3'-1 1/2"	17				1'-4"	1'-9"															
5AE07a	2	#5	3'-4"	0				3'-4"																
5AE07e	2	#5	6'-8"	0				6'-8"																
5AE08a	2	#5	3'-4"	0				3'-4"																
5AE08h	2	#5	6'-8"	0				6'-8"																
7AE01a	2	#7	1'-8"	0				1'-8"																
7AE01h	2	#7	5'-5"	0				5'-5"																



Vermont Agency of Transportation
RECEIVED
ON: **May 6, 2016**
and Checked for
CONFORMANCE
BY: Jennifer Fitch DATE: 05/10/16

FOR APPROVAL

LAP CHART	
#5	3'-0"

SHOP DRAWING REVIEW

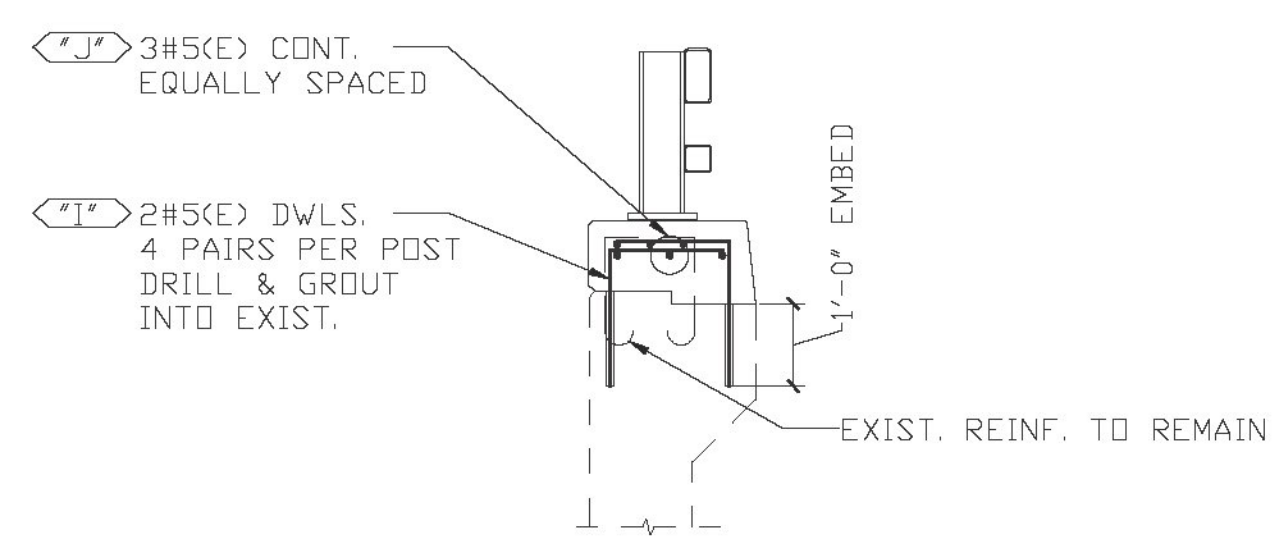
REVIEWED AS REQUIRED BY THE CONSTRUCTION CONTRACT DOCUMENTS AND APPROVED, BUT ONLY FOR CONFORMANCE TO THE DESIGN CONCEPT OF THE WORK, AND SUBJECT TO FURTHER LIMITATIONS AND REQUIREMENTS CONTAINED IN THE CONSTRUCTION CONTRACT DOCUMENTS.

REJECTED REVISE AND RESUBMIT APPROVED AS NOTED

CORRECTIONS OR COMMENTS MADE ON THE SHOP DRAWINGS DURING THIS REVIEW DID NOT RELIEVE CONTRACTOR FROM COMPLIANCE WITH REQUIREMENTS OF THE DRAWINGS AND SPECIFICATIONS. THIS CHECK IS ONLY FOR REVIEW OF GENERAL CONFORMANCE WITH THE DESIGN CONCEPT OF THE PROJECT AND GENERAL COMPLIANCE WITH THE INFORMATION GIVEN IN THE CONTRACT DOCUMENTS. THE CONTRACTOR IS RESPONSIBLE FOR CONFIRMING AND CORRELATING ALL QUANTITIES AND DIMENSIONS, SELECTING FABRICATION PROCESSES AND TECHNIQUES OF CONSTRUCTION, COORDINATING THEIR WORK WITH THAT OF ALL OTHER TRADES, AND PERFORMING THEIR WORK IN A SAFE AND SATISFACTORY MANNER.

CLD Consulting Engineers
540 Commercial Street
Manchester, NH 03101
603-888-8223

Job Number: 150223
Reviewed by: SRB
Date: 05/06/2016



TYPICAL WINGWALL SECTION
CONTRACT DWG. REF. 24 OF 49

LEGEND:

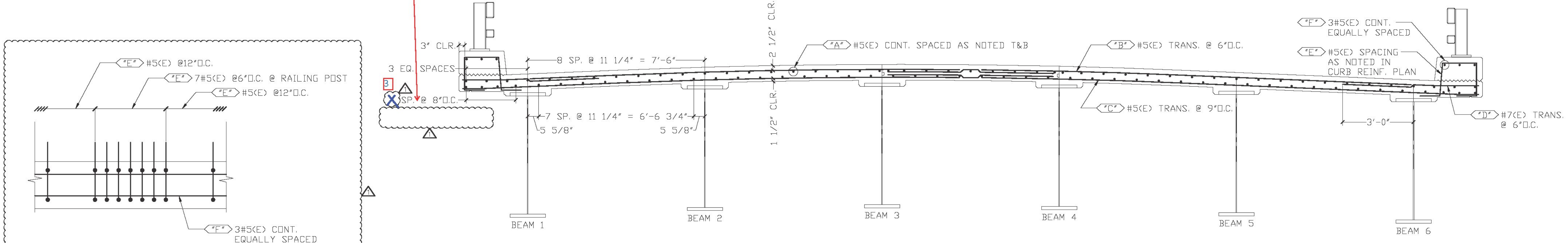
CONT.-CONTINUOUS	E.E.-EACH END
TRANS.-TRANSVERSE	E.F.-EACH FACE
DWLS.-DWELS	F.F.-FRONT FACE
VERTS.-VERTICAL	R.F.-REAR FACE
HORIZ.-HORIZONTAL	E.W.-EACH WAY
T&B -TOP & BOTTOM	D.C.-DN CENTER
I.F.-INNER FACE	L.W.-LONG WAY
O.F.-OUTER FACE	S.W.-SHORT WAY

ELEVATIONS & DIMENSIONS SHOWN ON THIS DWG. ARE FOR REINF. DETAILING PURPOSES ONLY AND ARE NOT INTENDED FOR DIMENSIONAL CONSTRUCTION.

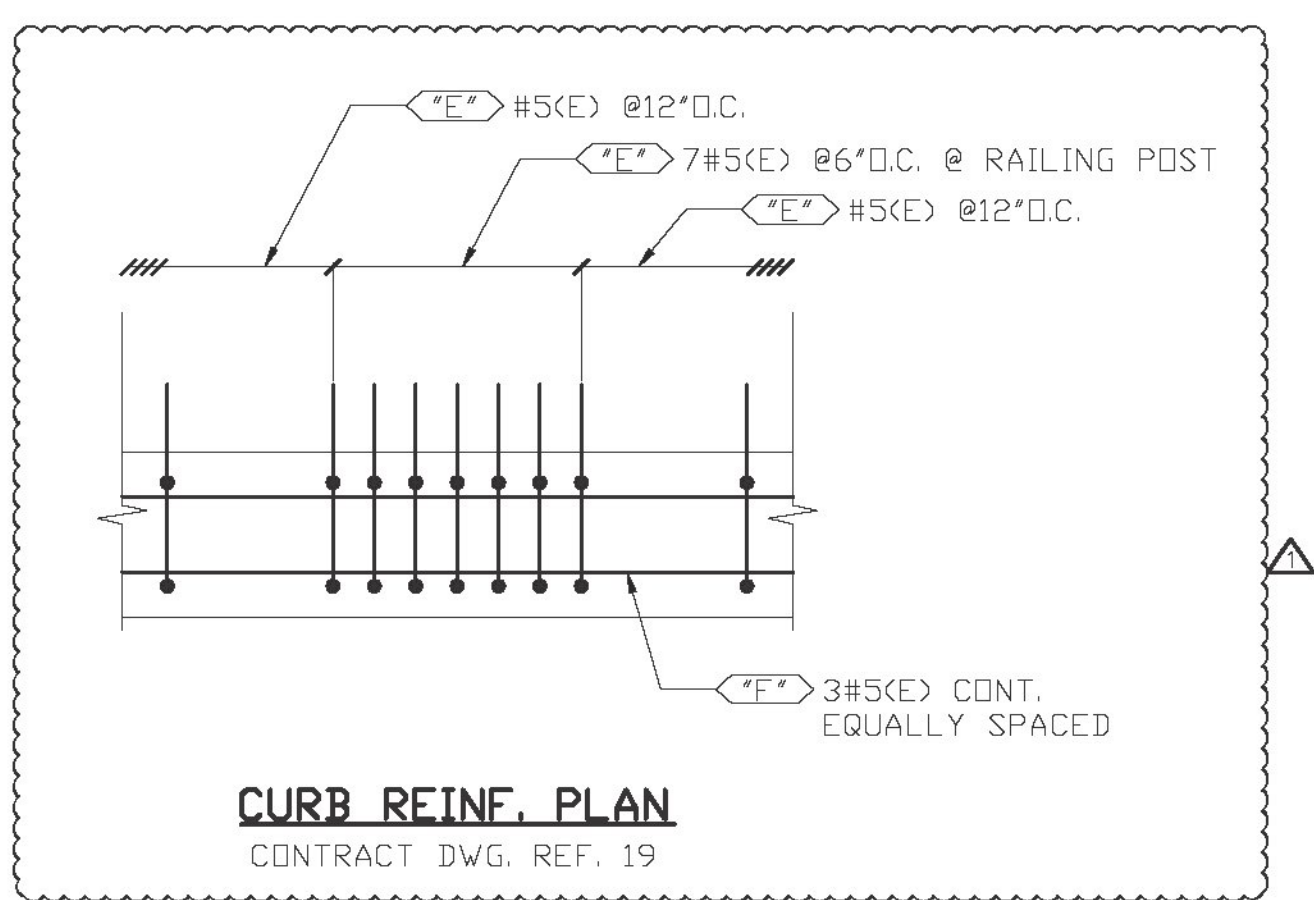
EPOXY REINF. BARS ASTM A615 GRADE 60, MARKED (E)

VERIFICATION OF UNCLEAR INFORMATION MAY BE REQUESTED ON THIS DRAWING. SHOULD VERIFICATION BE LEFT UN-ADDRESSED IT WILL REMAIN AS SHOWN AND ASSUME TO BE CORRECT.

YES - DRAWN CORRECTLY. HOWEVER, THERE ARE 3 SPACES WITH 4 BARS, NOT 4 SPACES. PLEASE REVISE.



SECTION A
CONTRACT DWG. REF. A / 19 OF 49



CURB REINF. PLAN
CONTRACT DWG. REF. 19

ALL REINF. EPOXY

6				
5				
4				
3				
2	5/6/16	REVISD PER APPROVAL / FOR APPROVAL		
1	5/3/16	FOR APPROVAL		
DATE	REV.#	SENT FOR		
		DIMENSION FABRICATORS INC.		
STRUCTURE	VTAOT IRASBURG IM DECK (46)			
LOCATION	INTERSTATE 91 (PRINCIPLE ARTERIAL) BRIDGE NO. 107N			
ARCHITECT	TOWN OF IRASBURG, COUNTY OF ORLEANS			
ENGINEER	CLD CONSULTING ENGINEERS			
CUSTOMER	J.P. SICARD, INC.			
DRAWN BY	DATE	DPI #		
CMB	4/26/16	9737		
DRAWING COVERS		DRAWING #		
DECK SLAB - SPAN 1		A		