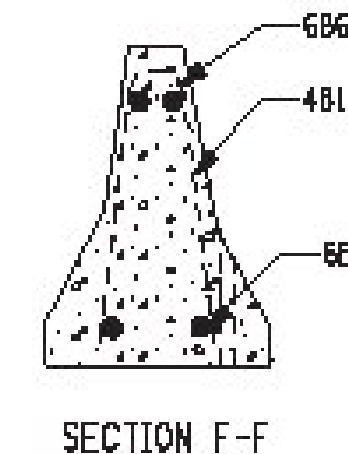
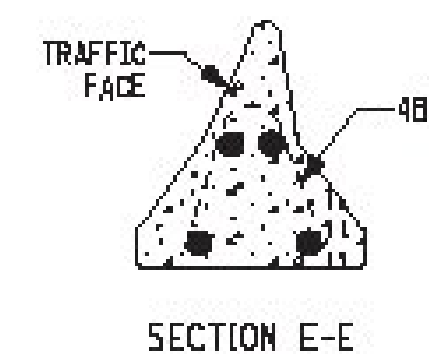
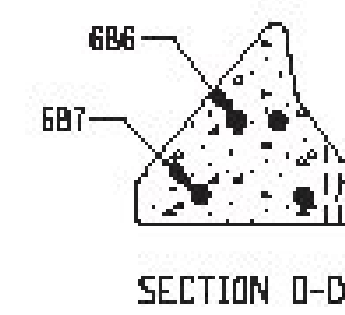
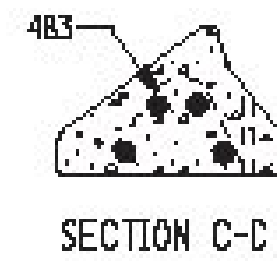
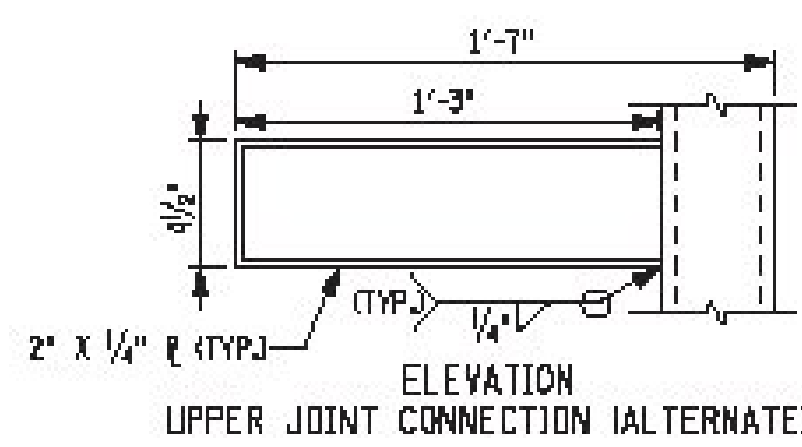
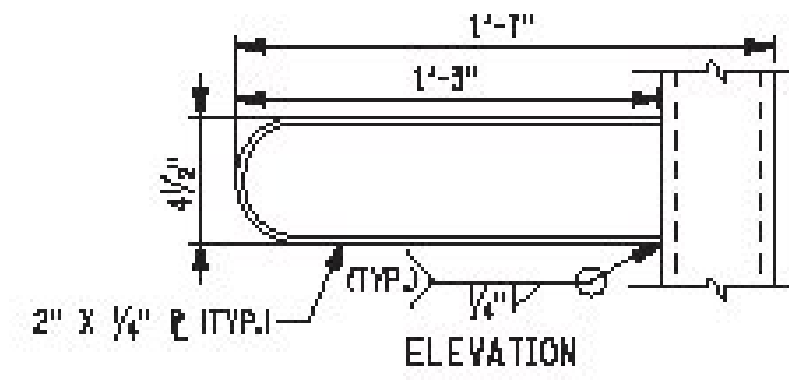
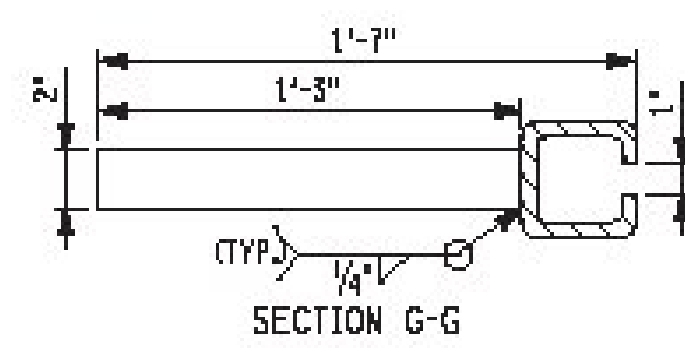
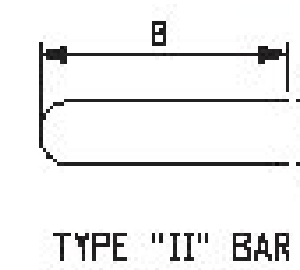
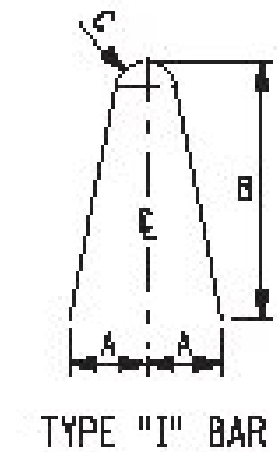
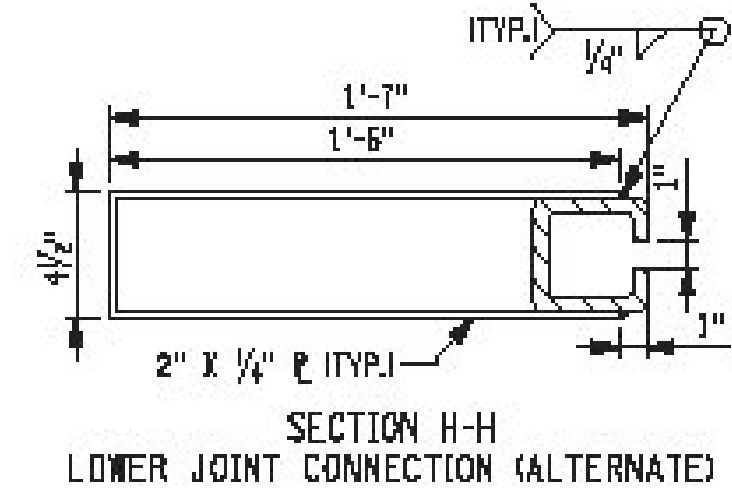
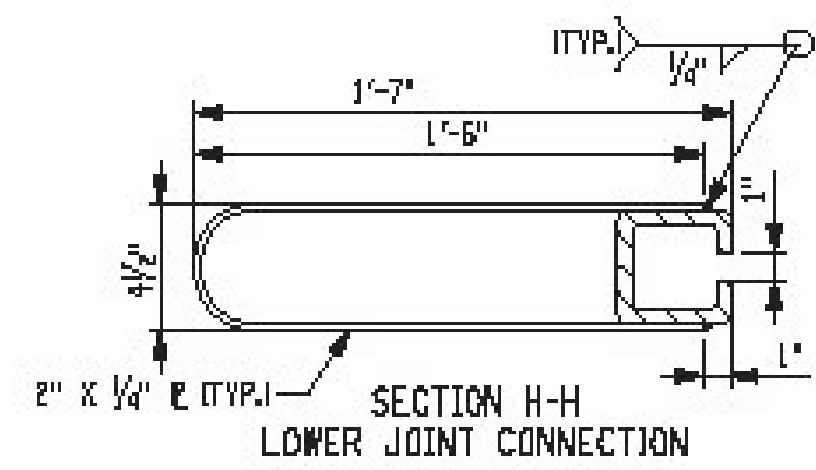


**NOTES:**

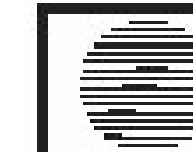
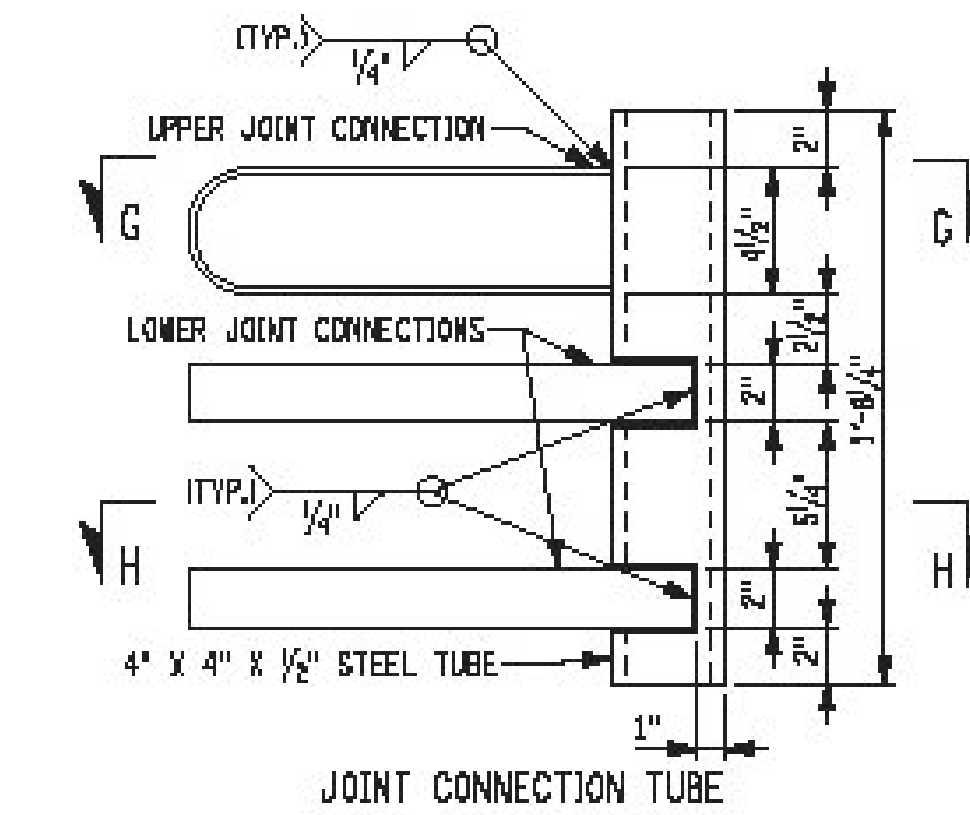
- TEMPORARY CONCRETE BARRIER SHALL BE PRECAST IN ACCORDANCE WITH THE REQUIREMENTS OF §704-05, PRECAST CONCRETE BARRIER.
- STEEL PLATE SHALL BE ASTM A36, A572, GRADE 345, TUBE STEEL SHALL BE ASTM A500 GRADE B OR C, AND REINFORCING BARS SHALL BE A615 GRADE 420.
- ALL WELDING SHALL BE PERFORMED BY A QUALIFIED WELDER IN ACCORDANCE WITH SECTION 8 OF THE NYS STEEL CONSTRUCTION MANUAL.
- SURFACES TO BE WELDED SHALL BE FREE OF SLAG, RUST, MOISTURE, GREASE OR ANY OTHER MATERIAL THAT WILL PREVENT PROPER WELDING OR PRODUCE OBJECTIONABLE FUMES.
- WELDING SHALL BE SHIELDED METAL ARC WELDING USING PROPERLY DRIED 3/32" E7018 ELECTRODES CONFORMING TO THE REQUIREMENTS OF SECTION 7 OF THE NYS STEEL CONSTRUCTION MANUAL.
- CONCRETE CLEAR COVER FOR REINFORCING BARS SHALL BE 1/2" (MIN.) EXCEPT WHERE OTHERWISE SPECIFIED.
- A MINIMUM OF (2) TWO RECESSED LIFTING DEVICES, WITH THE CAPACITY TO LIFT A MASS OF 5 TONS (MINIMUM) SHALL BE INSTALLED ON EACH SEGMENT.
- 1/8" ASTM A36 ANCHOR PINS SHALL BE PLACED IN FOUR RECESSES OF EACH SEGMENT TO BE PINNED.
- CONNECTION KEY COVER PLATE SHALL BE INSTALLED FLUSH WITH THE BARRIER TOP.
- THE DETAILS SHOWN FOR THE END SECTIONS ON THIS SHEET ARE FOR APPROACH ENDS WHICH ARE TO BE LOCATED TO THE LEFT OF THE TRAFFIC FLOW ON ONE-WAY OPERATIONS OR BETWEEN OPPOSING FLOWS OF TRAFFIC ON TWO-WAY OPERATIONS. WHEN AN APPROACH END IS TO BE LOCATED TO THE RIGHT OF THE TRAFFIC FLOW, THE END SEGMENT SHALL BE CONSTRUCTED SO THAT IT IS OPPOSITE-HAND (REVERSED IN ALL CONFIGURATIONS, ANCHOR HOLE LOCATIONS AND REINFORCEMENT).
- ALL CORNERS ON THE TOP OF THE SEGMENT SHALL BE ROUNDED TO A 1" RADIUS. THE SEGMENT SHALL HAVE A SMOOTH TRANSITION TO A 6" END-OF-SECTION HEIGHT. ALL END SECTIONS SHALL BE PINNED UNLESS OTHERWISE NOTED.



TRANSITION SECTIONS



TAPERED END SECTION BAR LIST								
MARK	SIZE	NUMBER PER SECTION	LENGTH	TYPE	A	B	C	LOCATION
4B1	13	3	4'-11"	I	5"	28"	1"	STIRRUPS
4B2	13	1	3'-3"	I	5"	18"	1"	STIRRUPS
4B3	13	1	1'-8"	I	5"	8"	1"	STIRRUPS
4B4	13	9	3'-1"	II	4"	18 1/2"		HOOPS
6B4	19	1	1'-2"	STR.				
6B5	19	1	6"	STR.				
6B6	19	2	16'-7"	STR.				TRANSVERSE (TOP)
6B7	19	2	18'-2"	STR.				TRANSVERSE (BOTTOM)



STATE OF NEW YORK  
DEPARTMENT OF TRANSPORTATION

U.S. CUSTOMARY STANDARD SHEET

TEMPORARY CONCRETE BARRIER  
(SHEET 2 OF 3)

APPROVED SEPTEMBER 30, 2009

ISSUED UNDER EB 09-025

/s/ J. F. TYNAN, P.E.  
DEPUTY CHIEF ENGINEER  
(CONSTRUCTION)

619-01

EFFECTIVE DATE: 01/07/10