

- NOTES:
- TEMPORARY CONCRETE BARRIER SHALL BE PRECAST IN ACCORDANCE WITH THE REQUIREMENTS OF 5704-05 PRECAST CONCRETE BARRIER.
  - TEMPORARY CONCRETE BARRIER SHALL BE PRECAST UNITS OF ONE OF THE FOLLOWING NOMINAL LENGTHS 8', 10', 12', 14', 16', 18', 20'.
  - STEEL PLATE REINFORCEMENT SHALL BE ASTM A36M, A572M, GRADE 345 STEEL. TUBE REINFORCEMENT SHALL BE ASTM A500, GRADE B OR C, AND REINFORCING BARS SHALL BE A615, GRADE 420. EPOXY BARS ARE NOT REQUIRED.
  - ALL WELDING SHALL BE PERFORMED BY A WELDER QUALIFIED IN ACCORDANCE WITH SECTION 8 OF THE NYS STEEL CONSTRUCTION MANUAL.
  - SURFACES TO BE WELDED SHALL BE FREE OF SLAG, RUST, MOISTURE, GREASE OR ANY OTHER MATERIAL THAT WILL PREVENT PROPER WELDING OR PRODUCE OBJECTIONABLE FUMES.
  - WELDING SHALL BE SHIELDED METAL ARC WELDING USING PROPERLY DRIED 5/32" E7018 ELECTRODES CONFORMING TO THE REQUIREMENTS OF SECTION 7 OF THE NYS STEEL CONSTRUCTION MANUAL.
  - THE NUMBER AND PLACEMENT OF THE 4B4 AND 4B5 BARS WILL VARY WITH THE LENGTH OF THE BARRIER SEGMENT.
  - CONCRETE CLEAR COVER FOR REINFORCING BARS SHALL BE 1 1/2" (MIN.) UNLESS OTHERWISE SPECIFIED.
  - A MINIMUM OF 12) TWO RECESSED LIFTING DEVICES, EACH WITH THE CAPACITY TO LIFT A MASS OF 5 TONS MINIMUM, SHALL BE INSTALLED ON EACH SEGMENT. SEGMENT MASS IS APPROXIMATELY 400 LBS/FT.
  - ONE DRAINAGE POCKET SHALL BE INCLUDED IN THE CENTER OF 8'-0" AND 10'-0" SEGMENTS, TWO DRAINAGE POCKETS IN ALL OTHER SEGMENTS.
  - CONNECTION KEY COVER PLATE SHALL BE INSTALLED FLUSH WITH THE BARRIER TOP.
  - 1/2" ASTM A36M ANCHOR PINS SHALL BE PLACED IN FOUR ANCHOR HOLES OF EACH SEGMENT TO BE PINNED. PINS SHALL BE PLACED ON THE WORKZONE SIDE OF THE BARRIER.
  - BASED ON SEGMENT LENGTH AND MAXIMUM JOINT ROTATION, TEMPORARY CONCRETE BARRIER CAN ONLY BE INSTALLED TO THE FOLLOWING MINIMUM RADIUS: 8' - 32', 10' - 119', 12' - 138', 14' - 161', 16' - 184', 18' - 201', 20' - 230'.

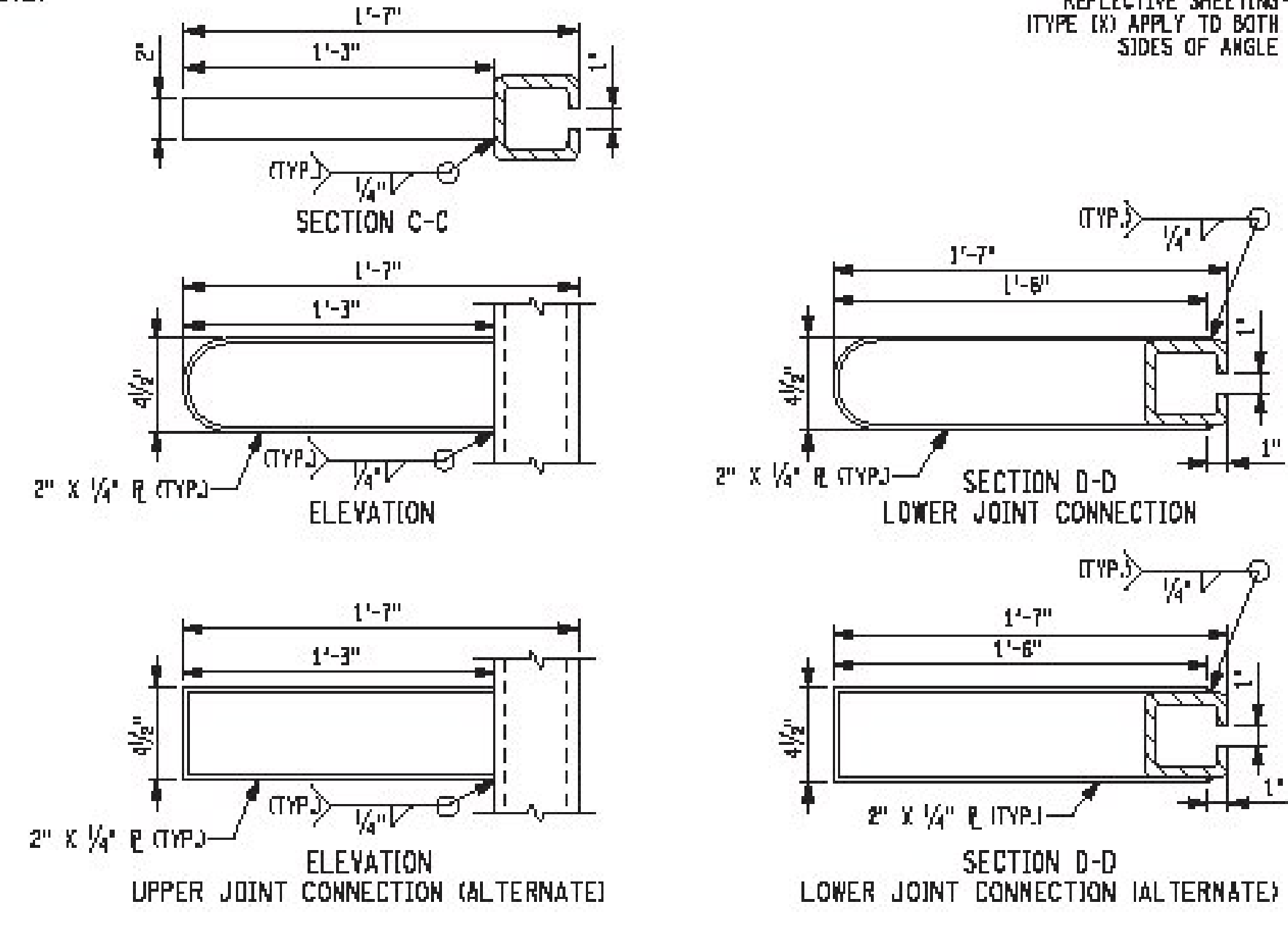
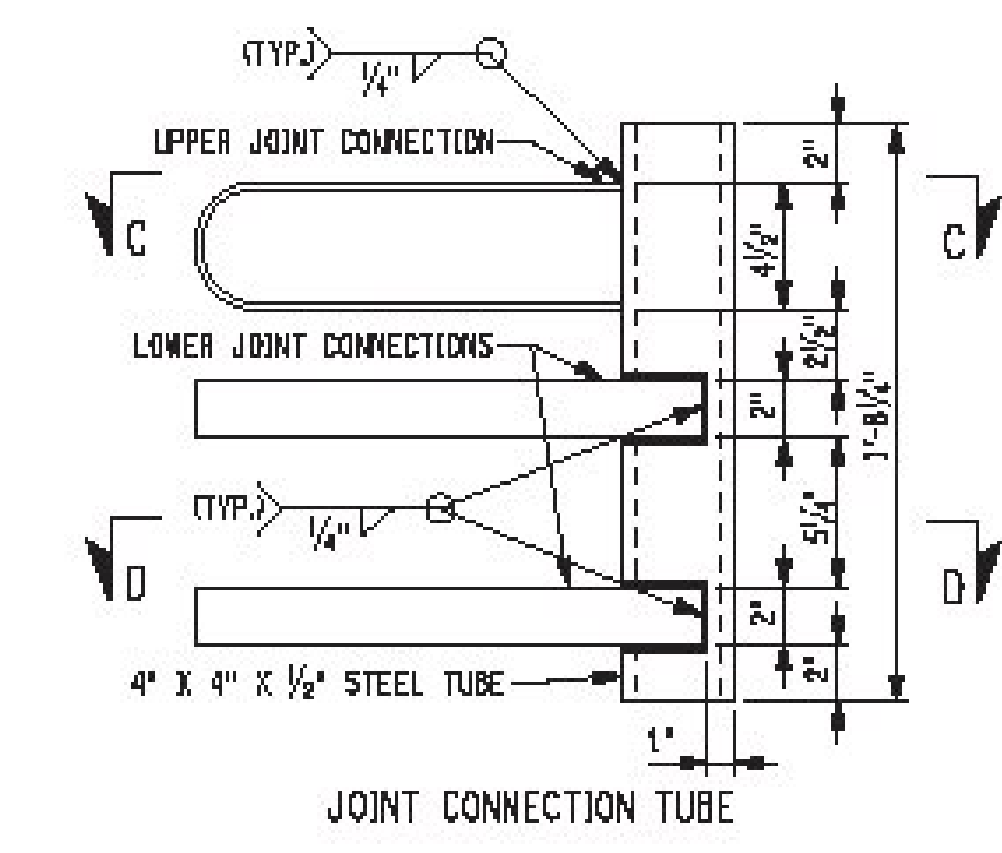
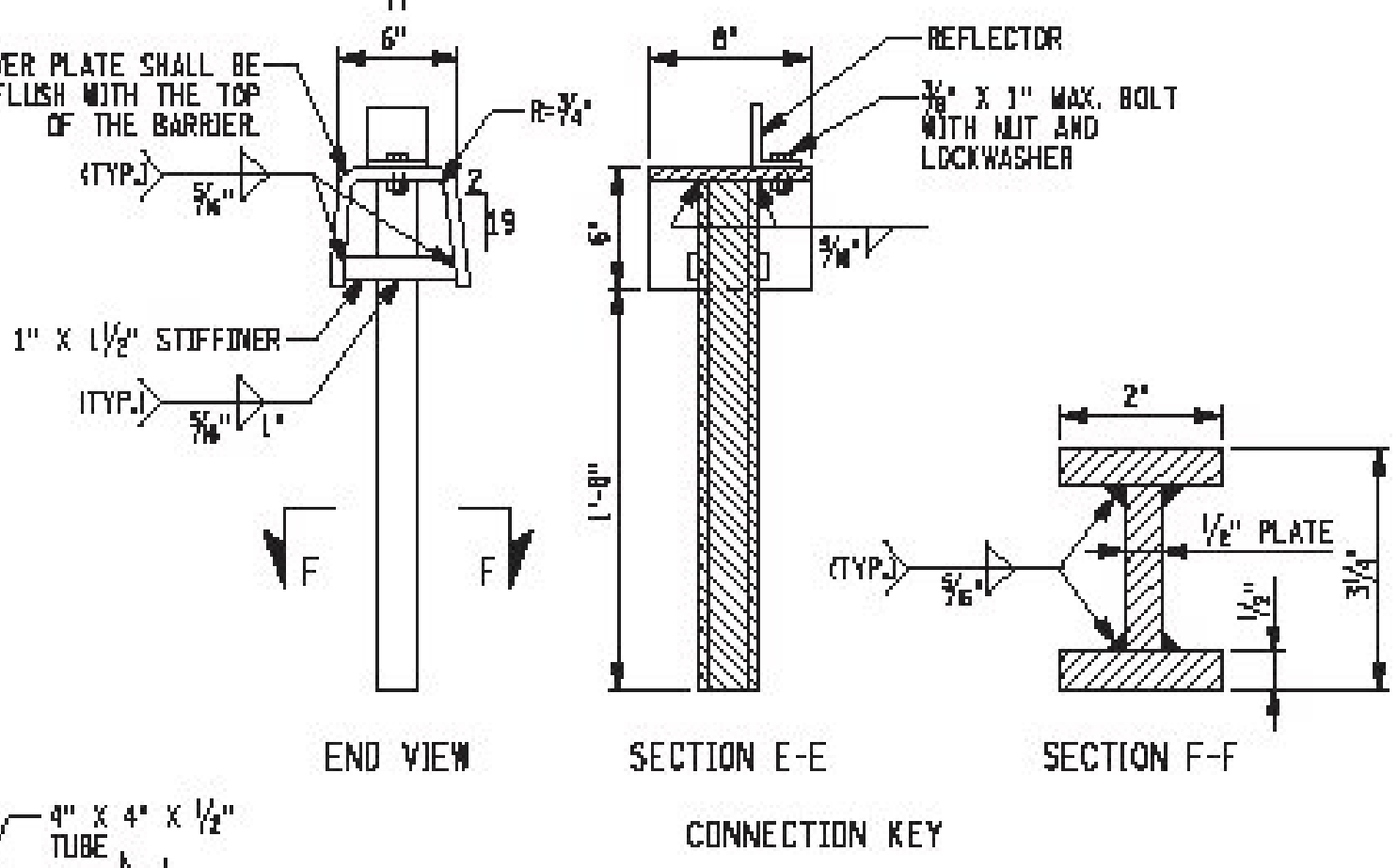
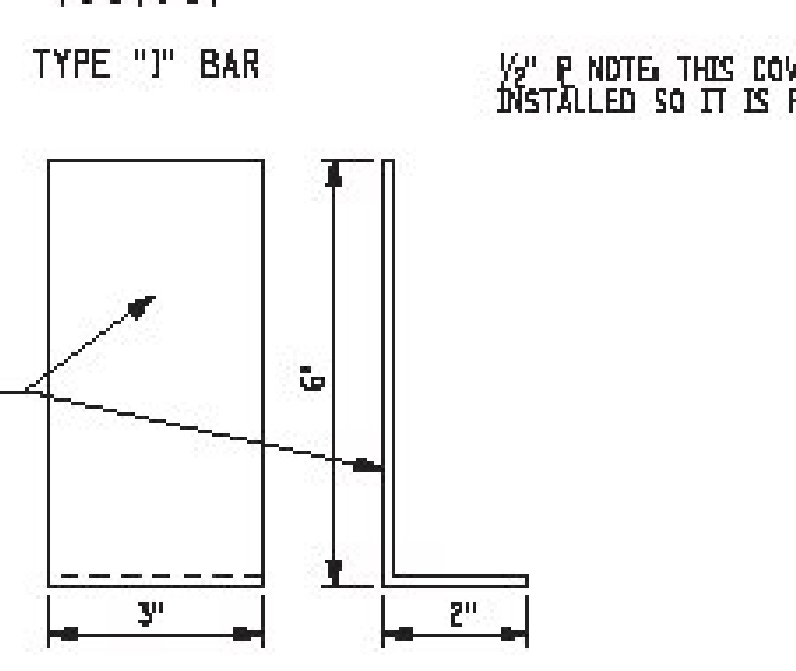
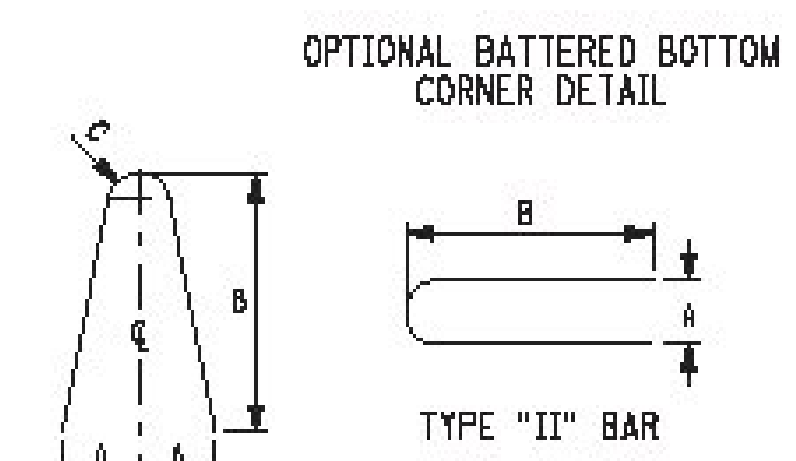
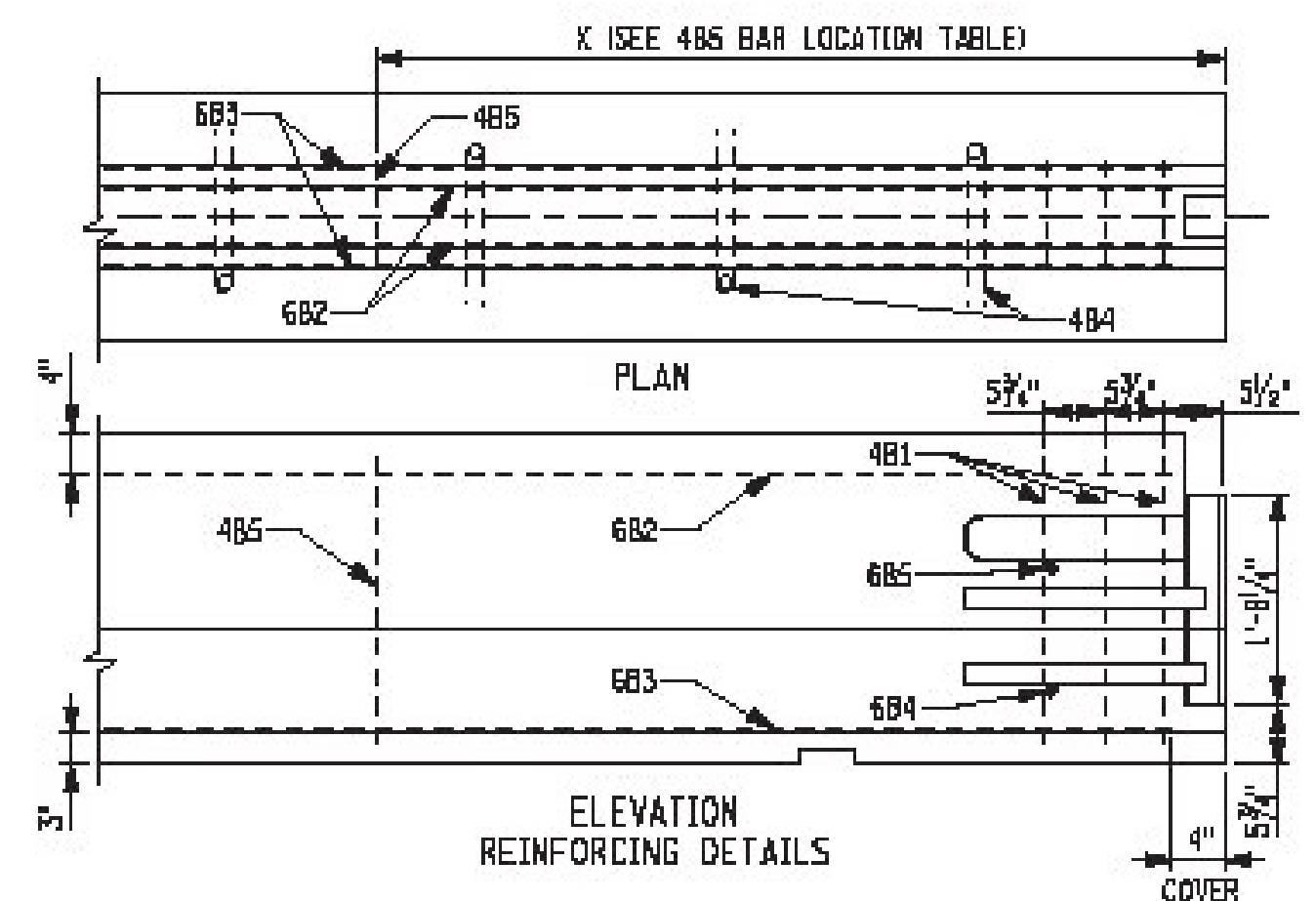
FULL SECTION BAR LIST

MARK	SIZE	NUMBER PER SECTION	LENGTH	TYPE	A	B	C	LOCATION
4B1	4	6	4'-11"	I	5'	20"	1"	STIRRUPS
4B4	4	1 PER RECESS	3'-1"	II	4'	15 1/2"		ANCHOR RECESS HOOPS
4B5	4	SEE TABLE	4'-11"	I	5'	20"	1"	STIRRUPS
6B2	6	2	SEE NOTE 7	STR.				LONGITUDINAL (TOP)
6B3	6	2	SEE NOTE 7	STR.				LONGITUDINAL (BOTTOM)
6B4	6	2	1'-2"	STR.				TRANSVERSE (BOTTOM)
6B5	6	2	6"	STR.				TRANSVERSE (TOP)

4B5 BAR LOCATION TABLE

NOMINAL LENGTH OF BARRIER UNIT	X	NO. EACH SECTION
20'	6'-11"	2
18'	6'-5"	2
16'	5'-11"	2
14'	7'	1
12'	8'	1
10'	5'	1
8'	N/A	0

"X" DISTANCE FROM END OF BARRIER TO 4B5 BAR



ERRATA 2 EFF. 09/04/2014  
ISSUED WITH EB 14-025  
ERRATA 1 EFF. 01/09/2014  
ISSUED WITH EB 13-042  
EFFECTIVE DATE: 01/07/10

STATE OF NEW YORK DEPARTMENT OF TRANSPORTATION	
U.S. CUSTOMARY STANDARD SHEET	
TEMPORARY CONCRETE BARRIER (SHEET 1 OF 3)	
APPROVED JULY 10, 2014	ISSUED UNDER EB 09-025
/S/ J. F. TYMAN, PE. DEPUTY CHIEF ENGINEER CONSTRUCTION	619-01

FILE NAME = 619-01\_010710\_2.dgn  
DATE/TIME = 06-14-2014 14:06  
USER = j.fourley