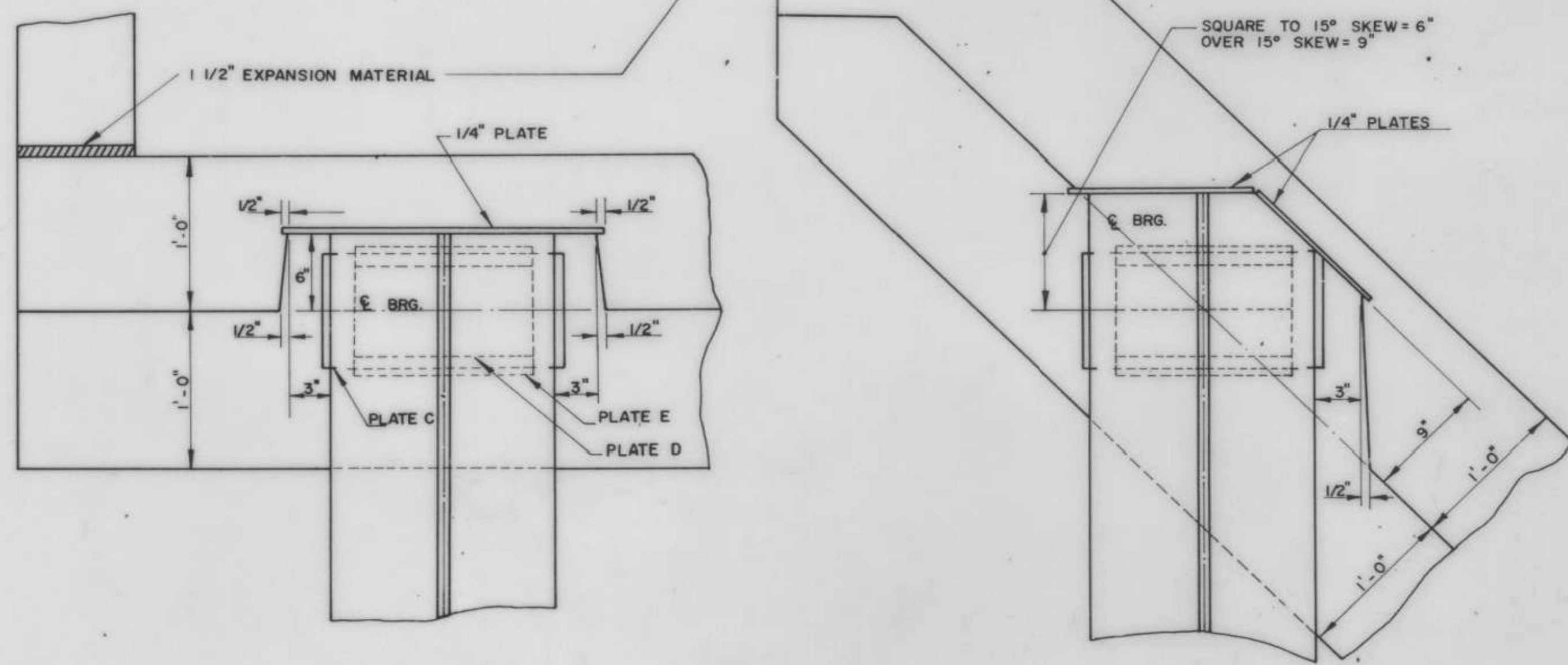


ELEVATION

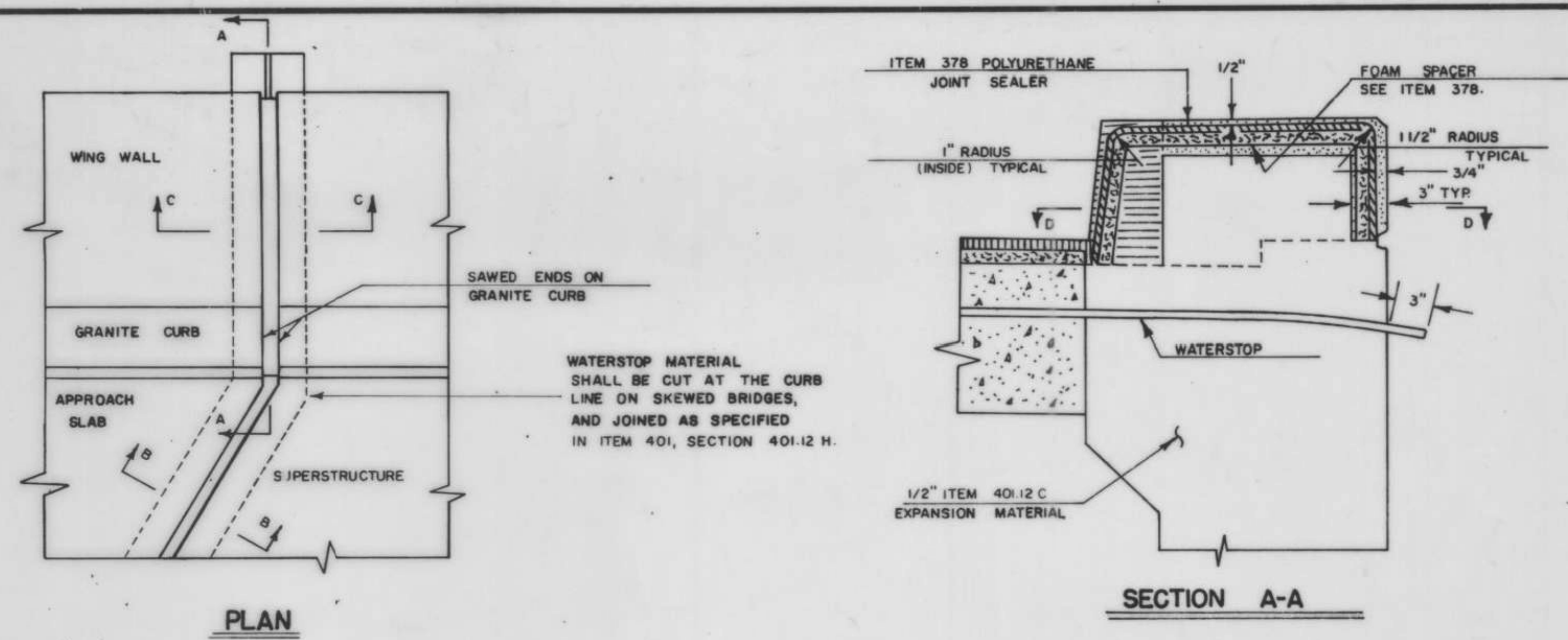
SECTION



PLAN FOR SQUARE BRIDGES

PLAN FOR SKEWED BRIDGES

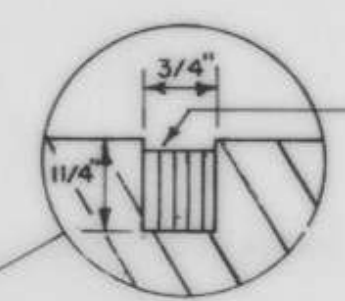
(DETAILS SHOWN FOR EXP. END; FIXED END SIMILAR EXCEPT P<sub>s</sub> A AND B IN LIEU OF P<sub>s</sub> C, D AND E; SEE SCB-D8-69) A



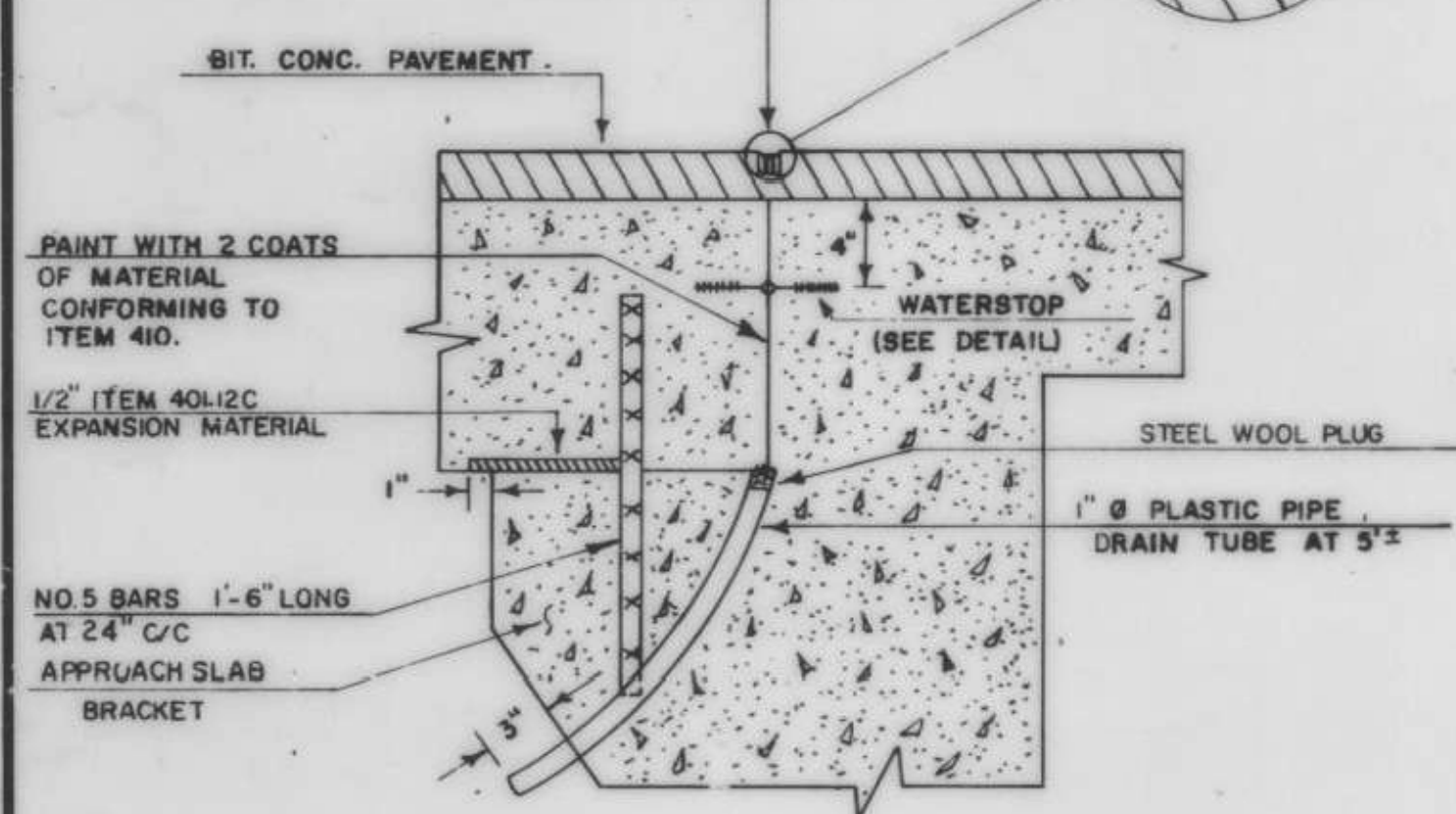
PLAN

SECTION A-A

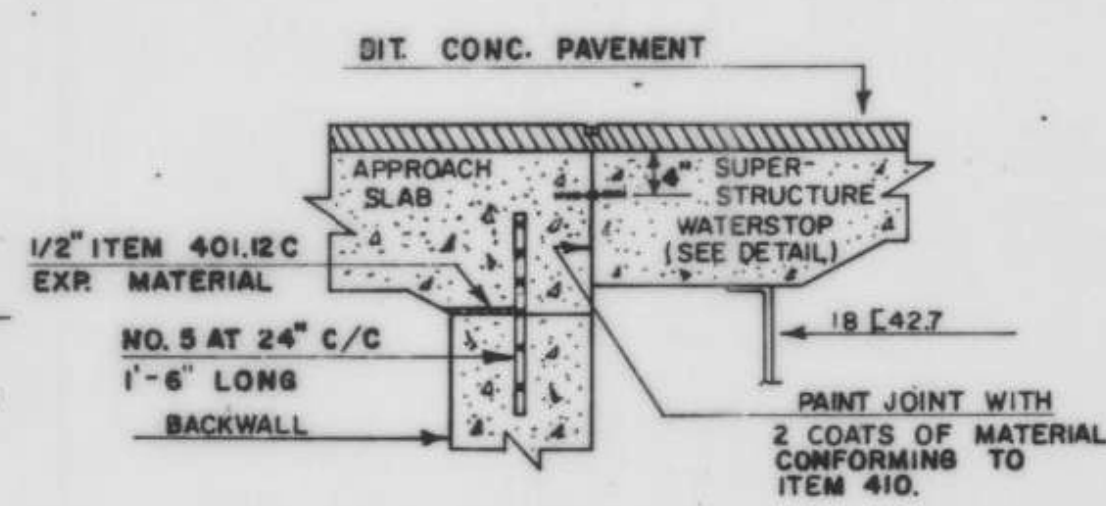
JOINT IS TO BE LOCATED ACCURATELY BY STRING LINING, OR OTHER MEANS, PRIOR TO PAVING, SO THAT THE SAW CUT WILL BE MADE DIRECTLY OVER THE JOINT.



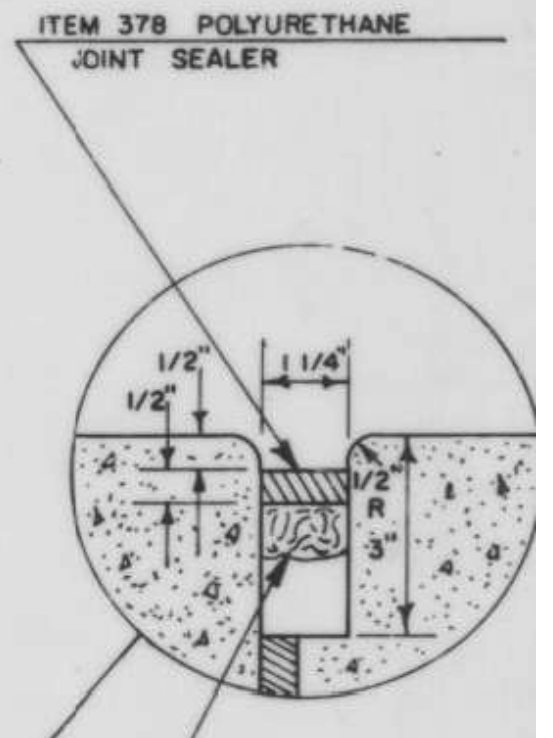
SAW CUT IN BITUMINOUS CONC. FILL WITH ITEM 372-A, JOINT SEALER - NOT POURED.



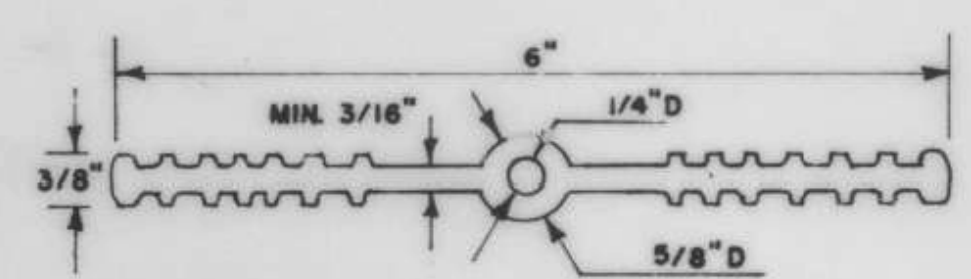
SECTION B-B



SECTION B-B WITH BACKWALL



FOAM SPACER SEE ITEM 378.

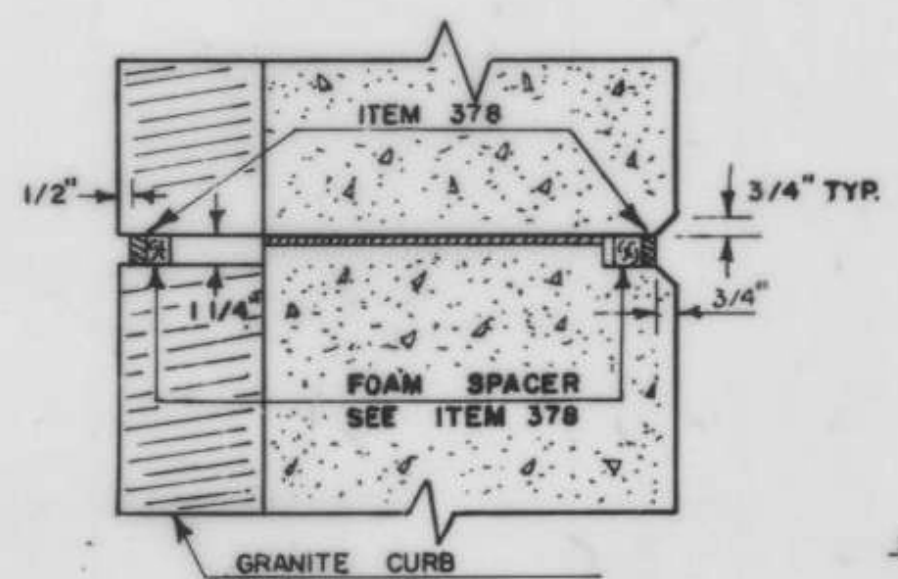


WATERSTOP DETAIL

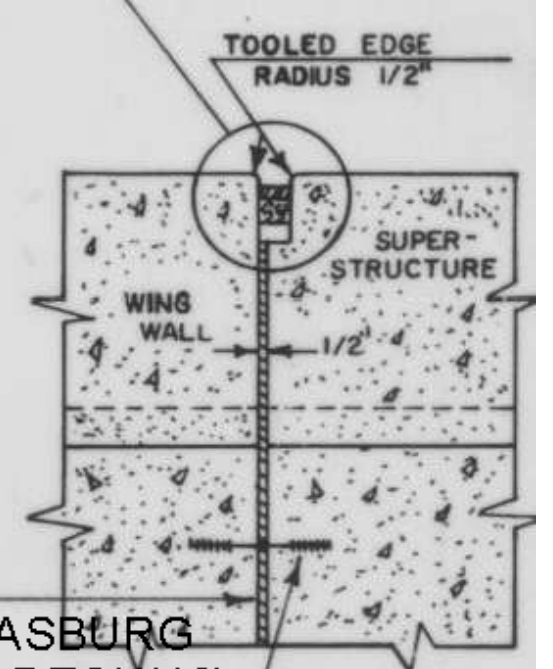
MATERIAL TO BE POLYVINYLCHLORIDE, AS SPECIFIED IN ITEM 401.12 H. OTHER CONFIGURATIONS, WITH MINOR DIMENSION VARIATIONS, MAY BE USED WITH THE APPROVAL OF THE BRIDGE ENGINEER.

COST OF THE WATERSTOP SHALL BE INCLUDED IN THE UNIT PRICE BID FOR ITEM 401, CONCRETE.

THE CONTRACTOR SHALL PROVIDE ADEQUATE SUPPORT TO MAINTAIN PROPER ALIGNMENT OF WATERSTOP DURING CONSTRUCTION.



SECTION D-D



TOOLED EDGE RADIUS 1/2"

IRASBURG IM DECK(46) BRIDGE NO. 1074N SHEET 30 OF 49 C-C FOR REFERENCE ONLY

REVISIONS AND CORRECTIONS

- 1 (B) FIXED END JOINT DETAILS - ADDED 4-2R TO J. WOOD
- 2 ADDED " SEE SCB-D8-69 " TO NOTE ON DET. (A) 12-11-70 J. WOOD

DRAWN BY: AV DEC 1962  
 RETRACED BY: A.J.A. MAY 1967  
 CHECKED BY: W. SMITH DEC. 1967

RECOMMENDED FOR APPROVAL  
 BRIDGE ENGINEER  
 CONSTRUCTION ENGINEER  
 ASST. CHIEF ENGINEER  
 CHIEF ENGINEER

1/24/68  
 1/24/68  
 1/24/68

DETAILS OF W BEAM BRIDGES

- (A) CURTAIN WALL AT BEARING DEVICES
- (B) FIXED END JOINT DETAILS

VERMONT DEPARTMENT OF HIGHWAYS STRUCTURE STANDARDS

# SCB-D9-67