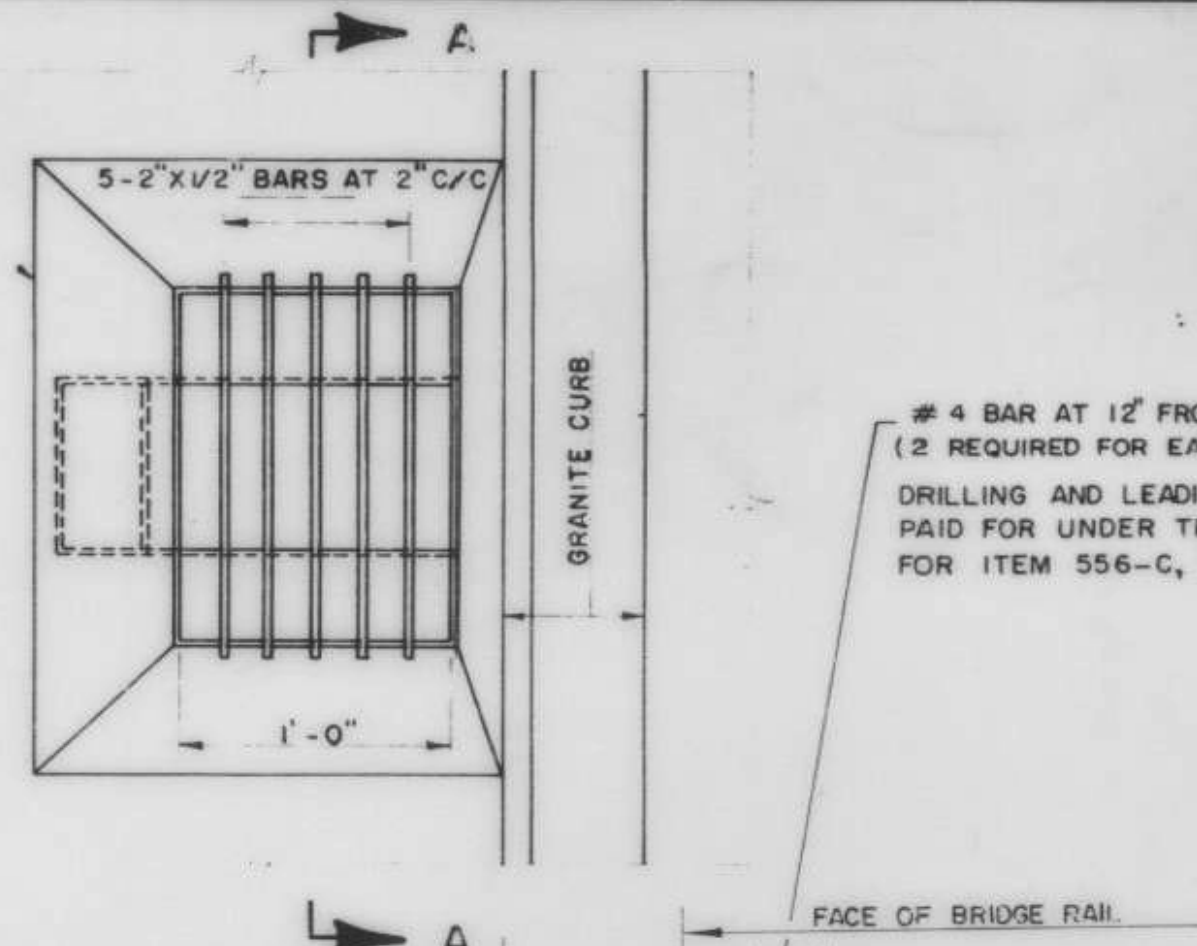
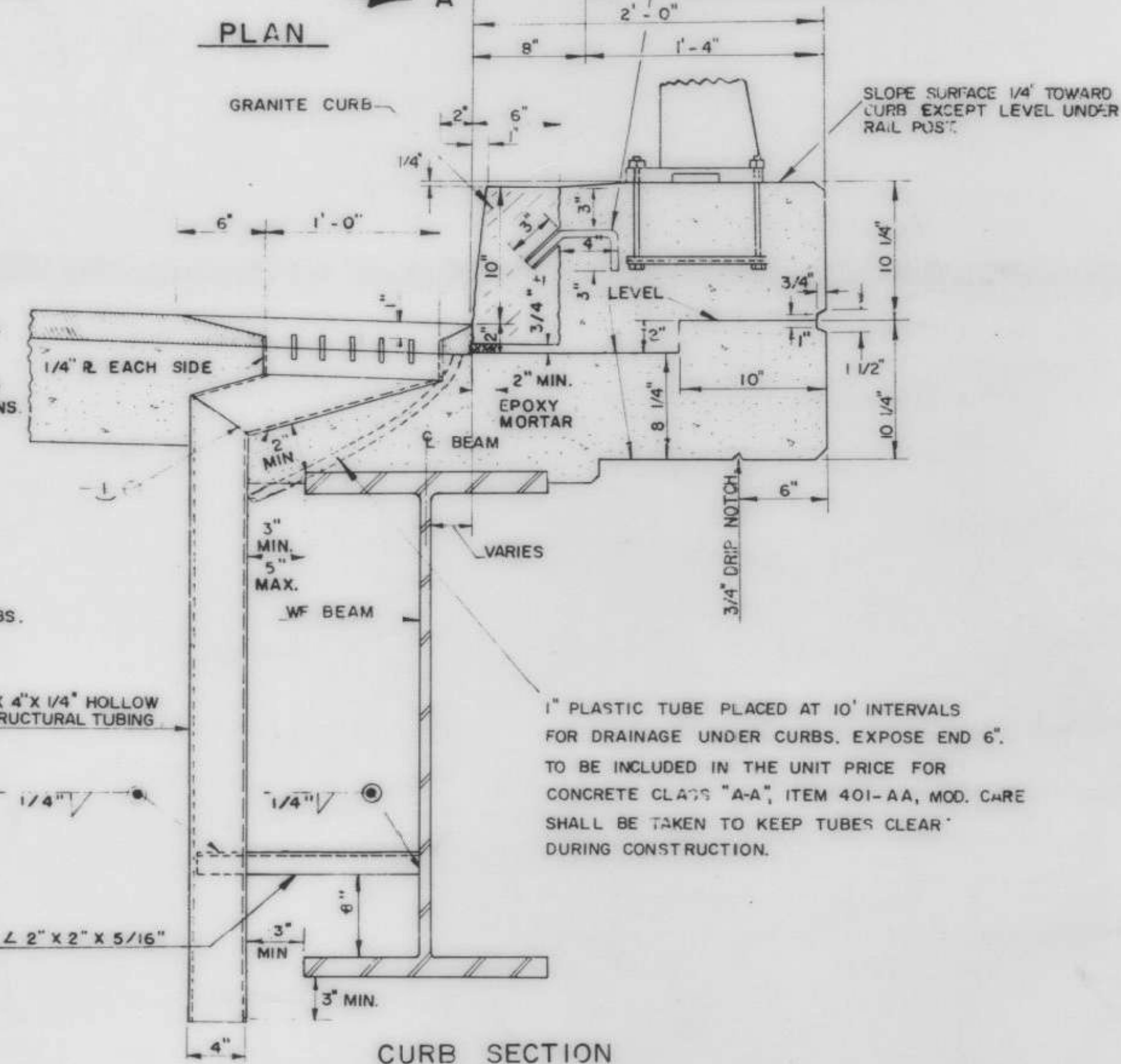


SECTION A-A



PLAN

#4 BAR AT 12" FROM EITHER END.
(2 REQUIRED FOR EACH CURB SECTION)
DRILLING AND LEADING OF BARS TO BE PAID FOR UNDER THE UNIT PRICE BID FOR ITEM 556-C, GRANITE BRIDGE CURB.



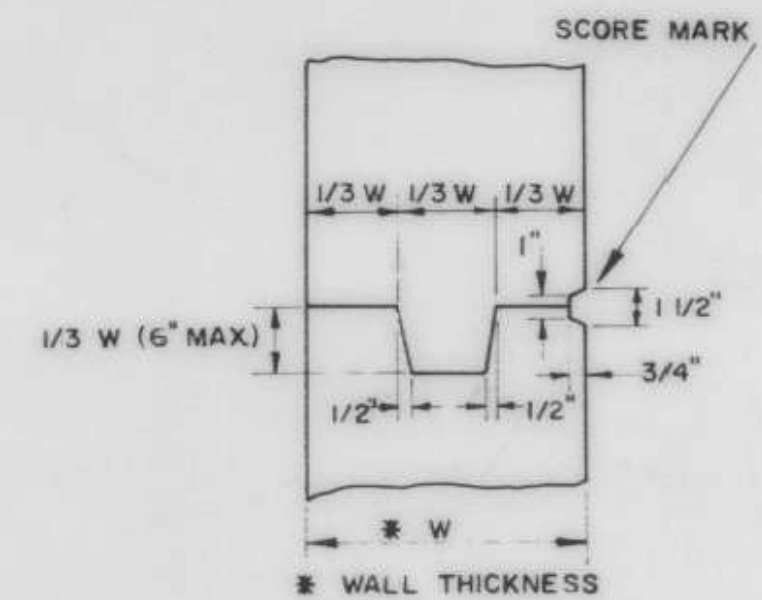
CURB SECTION

APPROXIMATE WEIGHT OF SCUPPER IS 140 LBS.

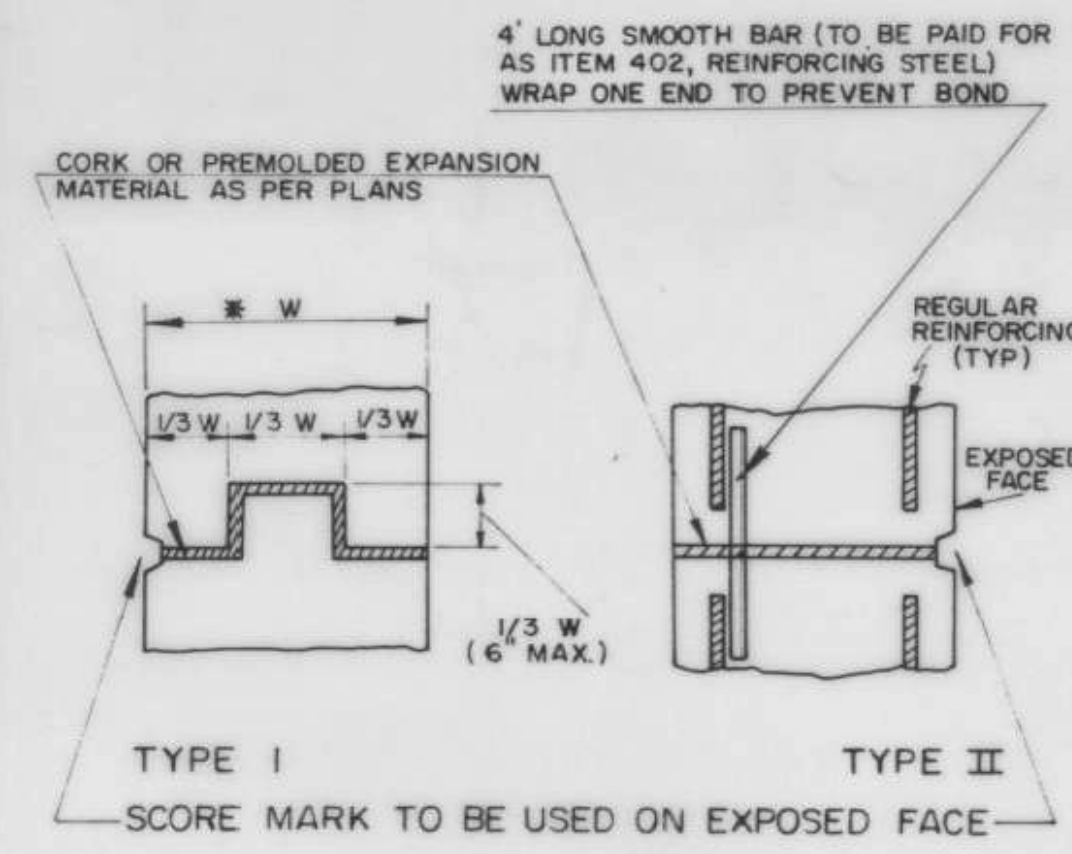
UNLESS OTHERWISE CALLED FOR ON THE PLANS:
1. END SCUPPERS ARE TO BE PLACED MIDWAY BETWEEN ϕ BRG. AND FIRST DIAPHRAGM ASSEMBLY.
2. INTERMEDIATE SCUPPERS ARE TO BE PLACED MIDWAY BETWEEN DIAPHRAGM ASSEMBLIES.

SCUPPER AND CURB DETAILS

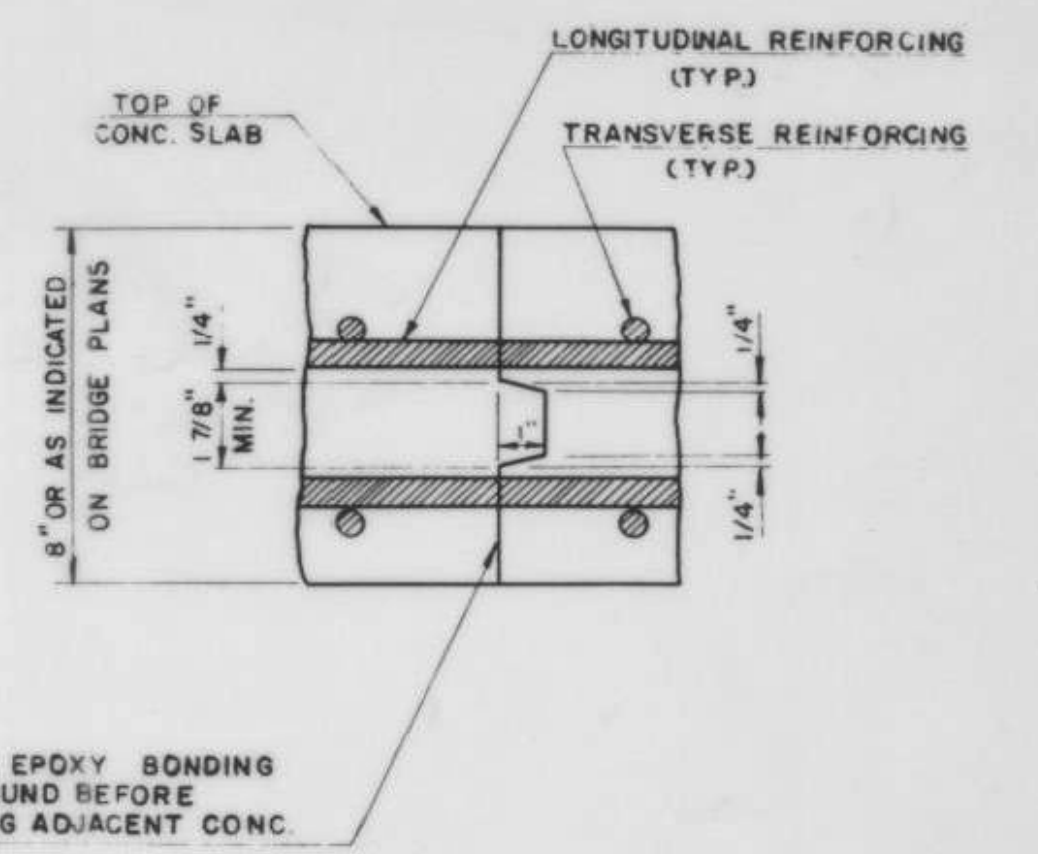
CONSTRUCTION JOINTS SHALL BE PLACED AS INDICATED ON THE PLANS.
HORIZONTAL SCORE MARKS SHALL BE PLACED AS INDICATED ON THE PLANS OR AS DIRECTED BY THE ENGINEER.



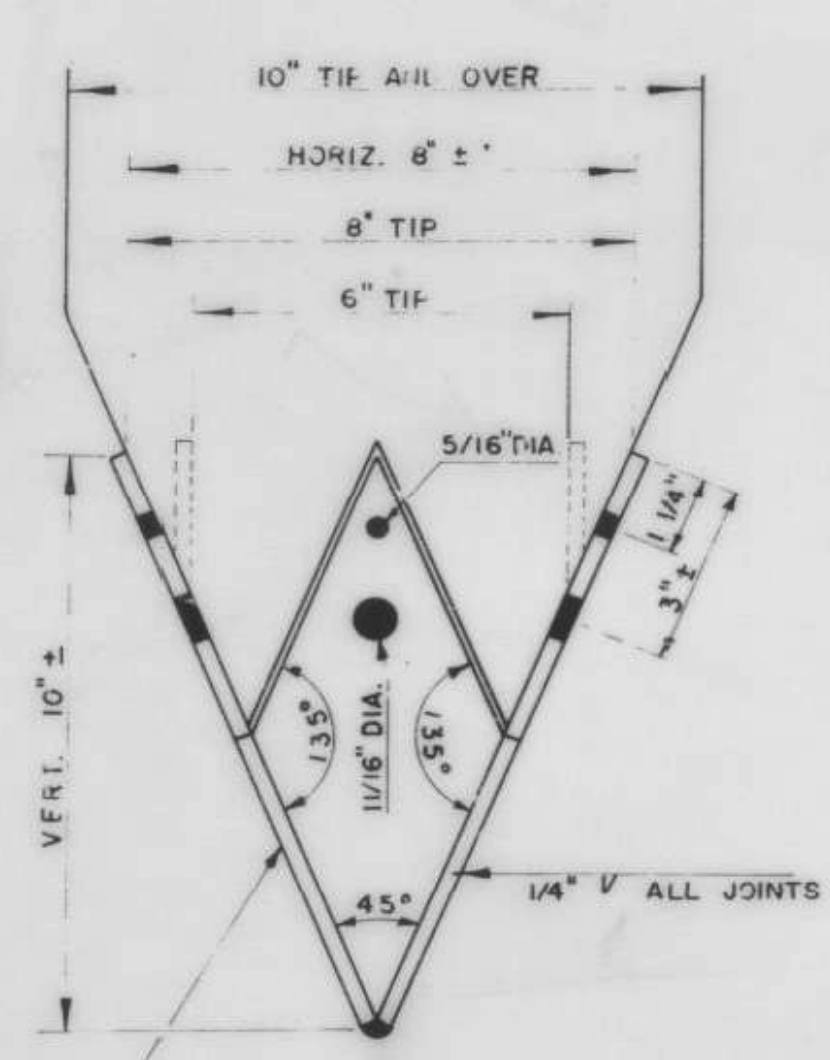
TYPICAL DETAIL OF CONSTRUCTION JOINT AND SCORE MARKS



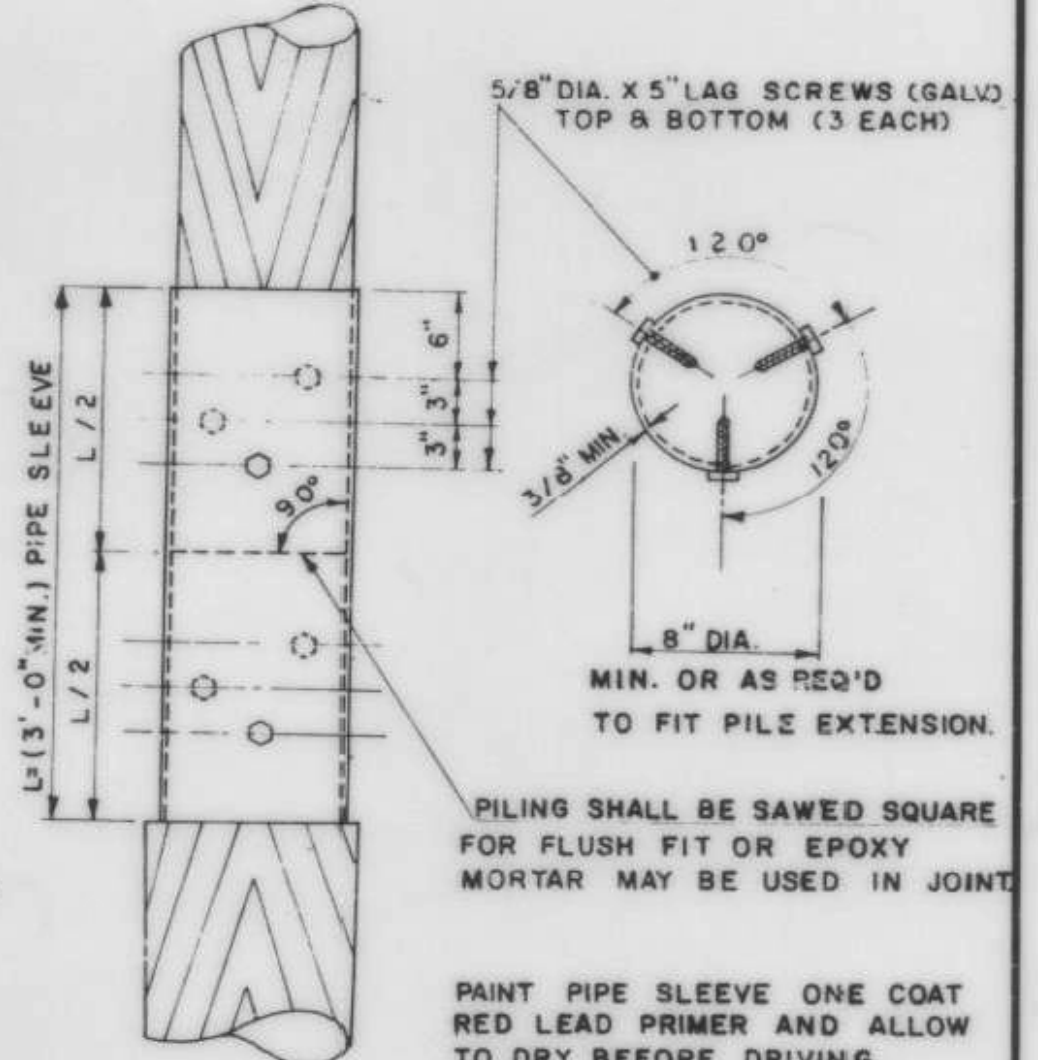
DETAILS OF VERTICAL EXPANSION JOINTS



TRANSVERSE BRIDGE SLAB CONSTRUCTION JOINT DETAILS

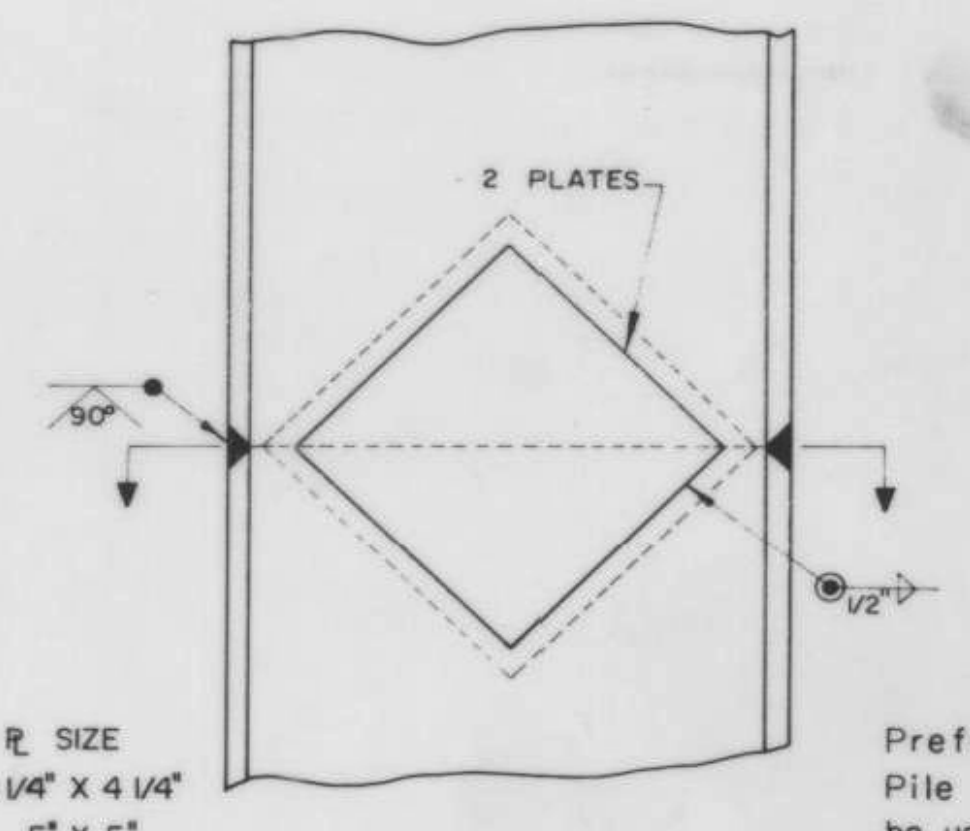


PILE SHOE



PILE SPLICE

DETAILS FOR TIMBER PILES



DETAIL OF PILE SPICE

H-PILES	R SIZE
8 BP	4 1/4" X 4 1/4"
10 BP	5" X 5"
12 BP	6 1/2" X 6 1/2"
14 BP	7 1/2" X 7 1/2"

Prefabricated Pile Splice may be used with the approval of the Engineer.

IRASBURG
IM DECK(46)
BRIDGE NO. 107N
SHEET 46 OF 49
FOR REFERENCE ONLY

REVISIONS AND CORRECTIONS
1. REVISION IN SCUPPER TO BEAM CONNECTION. MAY 23, 1969 R.S.H.
2. REVISED SCUPPER DETAILS AND WEIGHT. - (D) ADDED "TRANSVERSE BRIDGE SLAB CONSTRUCTION JOINT DETAILS", DELETED "DETAIL OF COPPER SUPPORT FOR EXPANSION MATERIAL".
(E) ADDED "PILE SPLICE" DETAIL. APRIL 28, 1970 - C OBRYAN

DRAWN BY: A. V. DEC. 1962
RETRACTED BY: A.J.A. MAY 1967
CHECKED BY: W. SMITH DEC. 1967
RECOMMENDED FOR APPROVAL: [Signature] BRIDGE ENGINEER
RECOMMENDED FOR APPROVAL: [Signature] CONSTRUCTION ENGINEER
RECOMMENDED FOR APPROVAL: [Signature] ASST. CHIEF ENGINEER
APPROVED BY: [Signature] CHIEF ENGINEER
DATE: 1/24/68

DETAILS OF W BEAM BRIDGES
(A) SCUPPER AND CURB DETAILS
(B)(C)(D) CONSTRUCTION DETAILS
(E)(F) PILE DETAILS

VERMONT
DEPARTMENT OF HIGHWAYS
STRUCTURE STANDARDS
SCB-D6-67