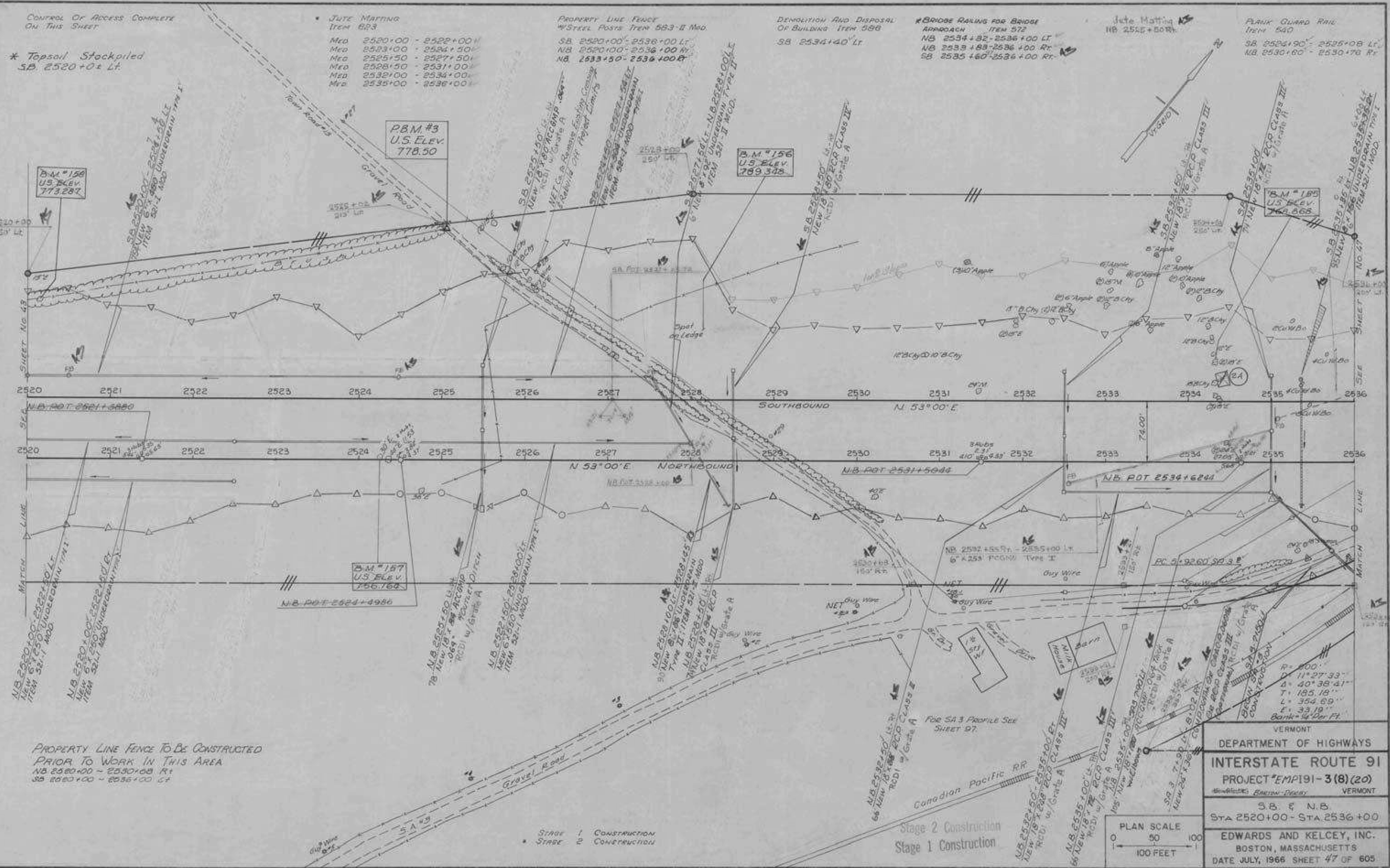


DATE	BY
APPROVED	DESIGNED
NOTED	DRAWN
REVISIONS	CHECKED
NO. 1	NO. 1
NO. 2	NO. 2
NO. 3	NO. 3
NO. 4	NO. 4
NO. 5	NO. 5
NO. 6	NO. 6
NO. 7	NO. 7
NO. 8	NO. 8
NO. 9	NO. 9
NO. 10	NO. 10
NO. 11	NO. 11
NO. 12	NO. 12
NO. 13	NO. 13
NO. 14	NO. 14
NO. 15	NO. 15
NO. 16	NO. 16
NO. 17	NO. 17
NO. 18	NO. 18
NO. 19	NO. 19
NO. 20	NO. 20
NO. 21	NO. 21
NO. 22	NO. 22
NO. 23	NO. 23
NO. 24	NO. 24
NO. 25	NO. 25
NO. 26	NO. 26
NO. 27	NO. 27
NO. 28	NO. 28
NO. 29	NO. 29
NO. 30	NO. 30
NO. 31	NO. 31
NO. 32	NO. 32
NO. 33	NO. 33
NO. 34	NO. 34
NO. 35	NO. 35
NO. 36	NO. 36
NO. 37	NO. 37
NO. 38	NO. 38
NO. 39	NO. 39
NO. 40	NO. 40
NO. 41	NO. 41
NO. 42	NO. 42
NO. 43	NO. 43
NO. 44	NO. 44
NO. 45	NO. 45
NO. 46	NO. 46
NO. 47	NO. 47
NO. 48	NO. 48
NO. 49	NO. 49
NO. 50	NO. 50
NO. 51	NO. 51
NO. 52	NO. 52
NO. 53	NO. 53
NO. 54	NO. 54
NO. 55	NO. 55
NO. 56	NO. 56
NO. 57	NO. 57
NO. 58	NO. 58
NO. 59	NO. 59
NO. 60	NO. 60
NO. 61	NO. 61
NO. 62	NO. 62
NO. 63	NO. 63
NO. 64	NO. 64
NO. 65	NO. 65
NO. 66	NO. 66
NO. 67	NO. 67
NO. 68	NO. 68
NO. 69	NO. 69
NO. 70	NO. 70
NO. 71	NO. 71
NO. 72	NO. 72
NO. 73	NO. 73
NO. 74	NO. 74
NO. 75	NO. 75
NO. 76	NO. 76
NO. 77	NO. 77
NO. 78	NO. 78
NO. 79	NO. 79
NO. 80	NO. 80
NO. 81	NO. 81
NO. 82	NO. 82
NO. 83	NO. 83
NO. 84	NO. 84
NO. 85	NO. 85
NO. 86	NO. 86
NO. 87	NO. 87
NO. 88	NO. 88
NO. 89	NO. 89
NO. 90	NO. 90
NO. 91	NO. 91
NO. 92	NO. 92
NO. 93	NO. 93
NO. 94	NO. 94
NO. 95	NO. 95
NO. 96	NO. 96
NO. 97	NO. 97
NO. 98	NO. 98
NO. 99	NO. 99
NO. 100	NO. 100



\* Topsoil Stockpiled  
SB 2520+00 LT.

JUTE MATTING  
ITEM 583

Med	2520+00 - 2522+00
Med	2523+00 - 2524+30
Med	2525+50 - 2527+50
Med	2528+50 - 2531+00
Med	2532+00 - 2534+00
Med	2535+00 - 2536+00

PROPERTY LINE FENCE  
W/STEEL POSTS ITEM 583-II MOD.  
SB 2520+00 - 2536+00 LT.  
NB 2520+00 - 2536+00 RT.  
NB 2533+50 - 2536+00 RT.

DEMOLITION AND DISPOSAL  
OF BUILDING ITEM 586  
SB 2534+40 LT.

BRIDGE RAKING FOR BRIDGE  
APPROACH ITEM 572  
NB 2534+32 - 2536+00 LT.  
NB 2533+83 - 2536+00 RT.  
SB 2535+60 - 2536+00 RT.

Jute Matting  
NB 2535+80 RT.

PLANK GUARD RAIL  
ITEM 540  
SB 2524+90 - 2535+08 LT.  
NB 2530+60 - 2530+70 RT.

PROPERTY LINE FENCE TO BE CONSTRUCTED  
PRIOR TO WORK IN THIS AREA  
NB 2520+00 - 2530+00 RT.  
SB 2520+00 - 2536+00 LT.

STAGE 1 CONSTRUCTION  
STAGE 2 CONSTRUCTION

Stage 2 Construction  
Stage 1 Construction



VERMONT  
DEPARTMENT OF HIGHWAYS  
INTERSTATE ROUTE 91  
PROJECT EMPI91-3(18)(20)  
VERMONT  
S.B. & N.B.  
STA 2520+00 - STA 2536+00  
EDWARDS AND KELCEY, INC.  
BOSTON, MASSACHUSETTS  
DATE JULY, 1966 SHEET 47 OF 605

IRASBURG  
IM DECK(46)  
BRIDGE NO. 107N  
SHEET 30 OF 49  
FOR REFERENCE ONLY