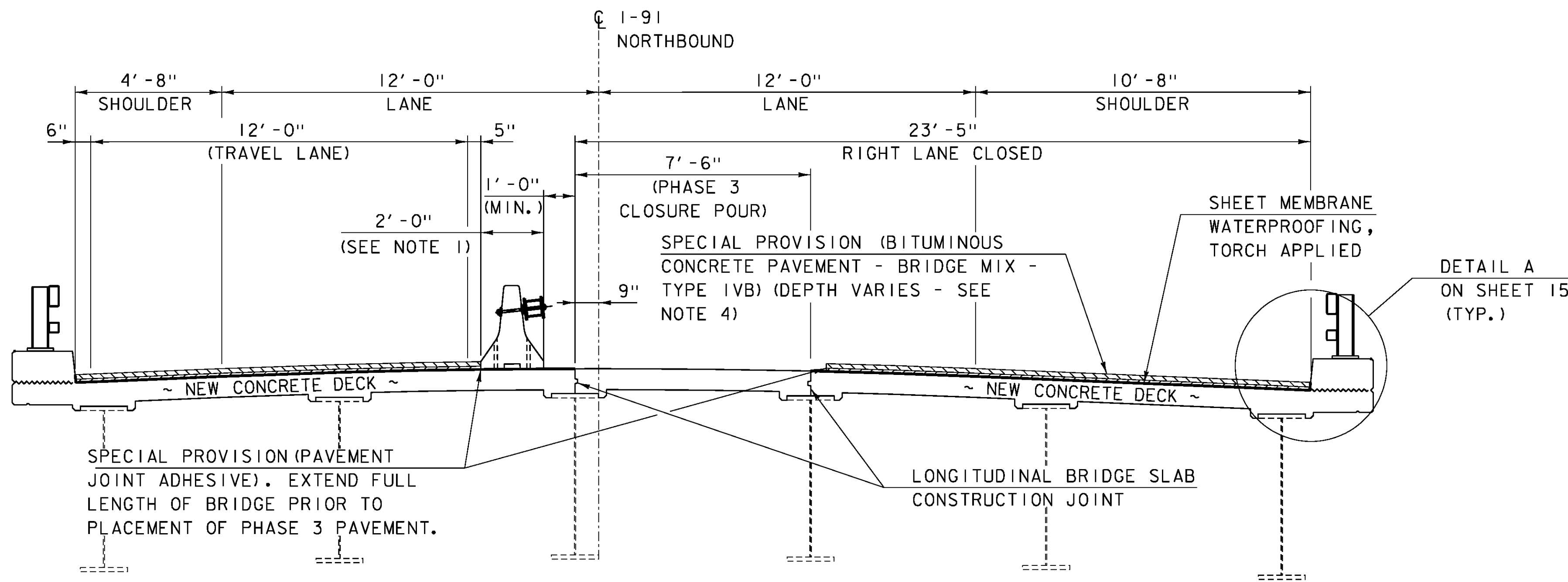


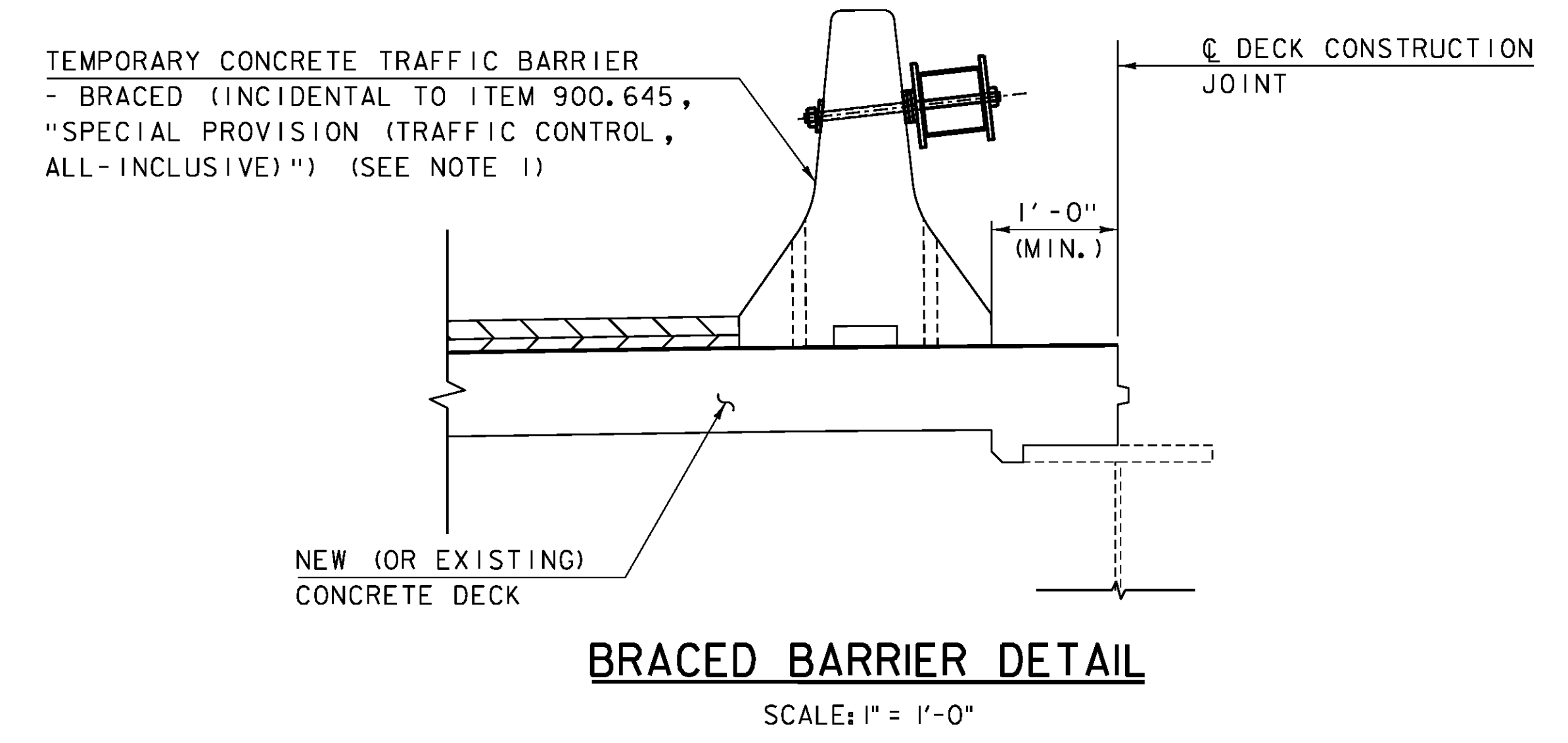
**PHASE 2**  
SCALE: 3/8" = 1'-0"



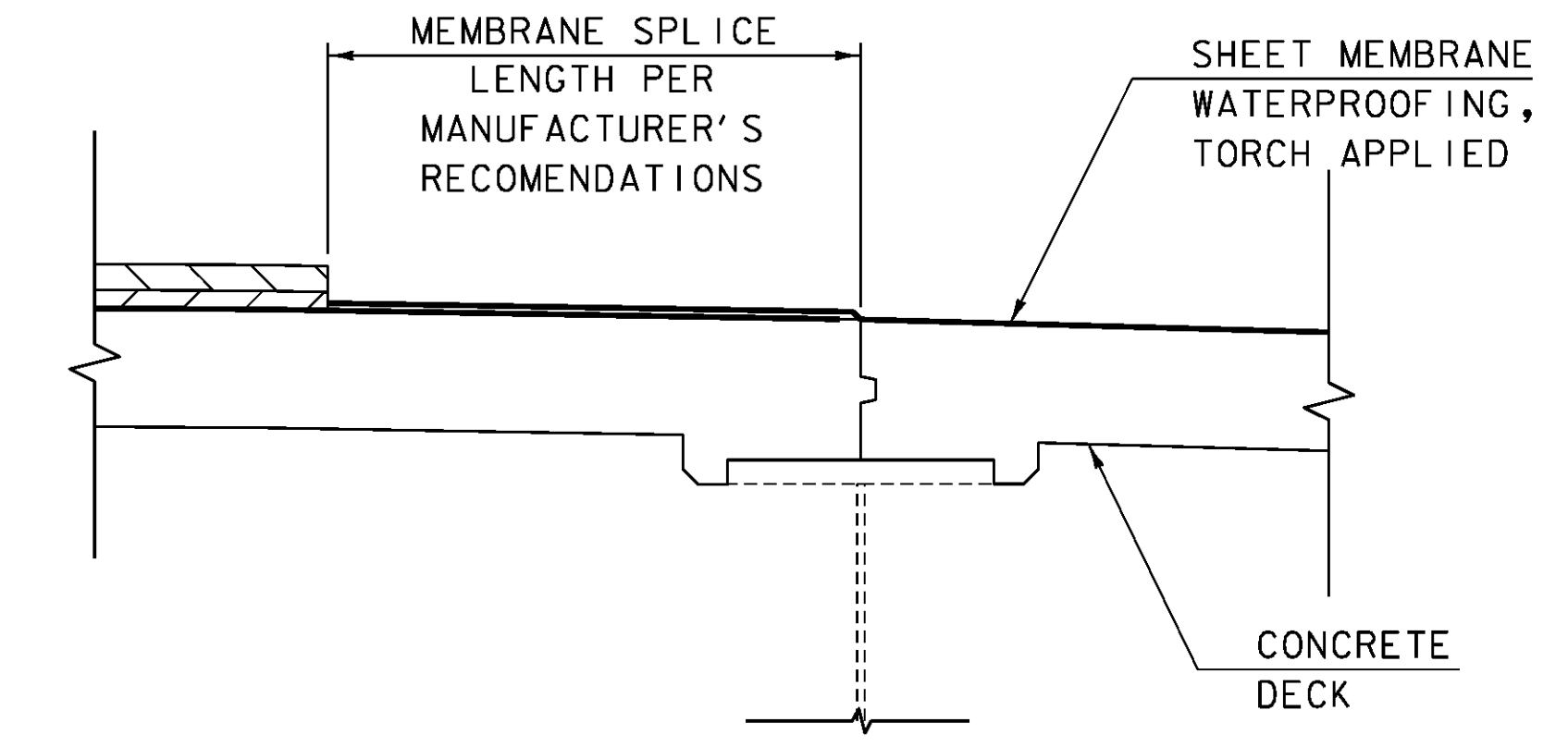
**PHASE 3**  
SCALE: 3/8" = 1'-0"

**NOTES:**

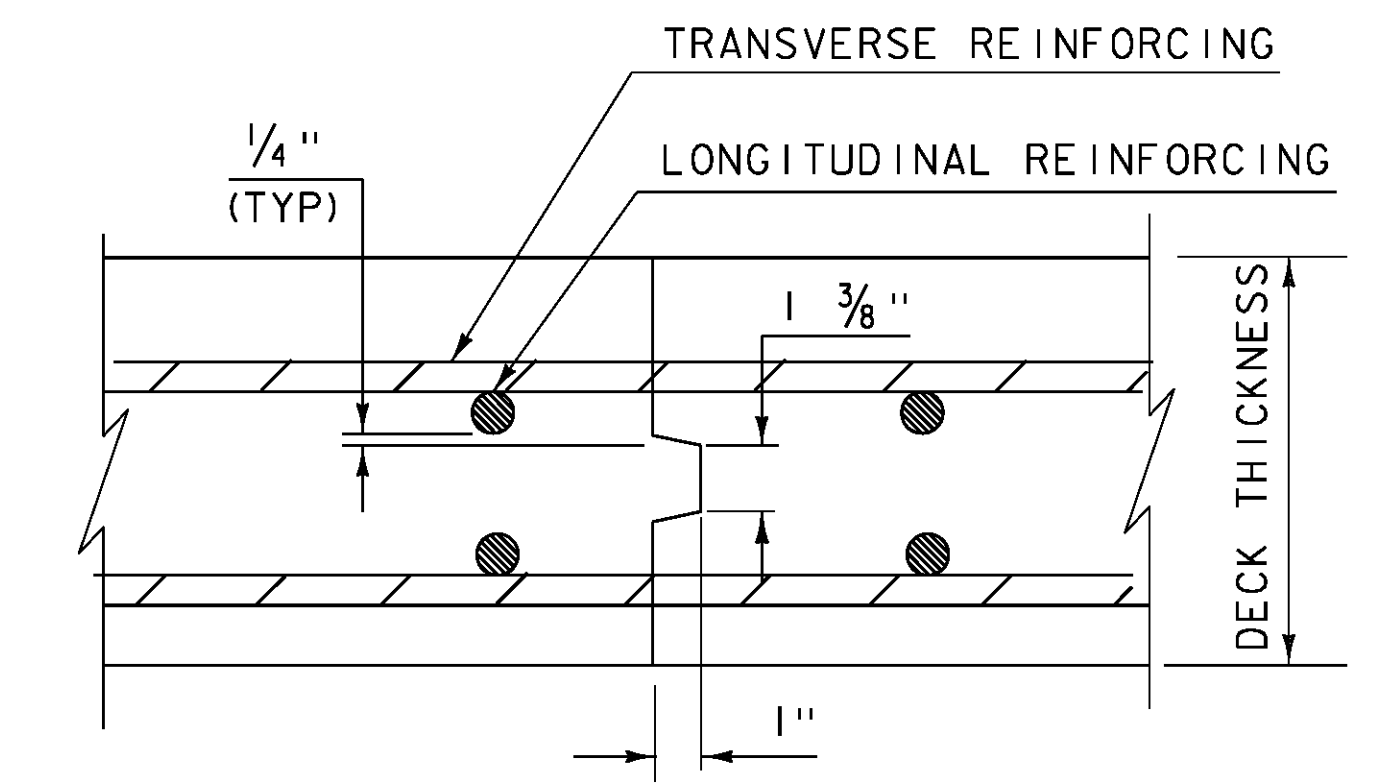
1. TEMPORARY CONCRETE TRAFFIC BARRIER AND TEMPORARY CONCRETE TRAFFIC BARRIER - BRACED SHALL BE REQUIRED DURING BRIDGE DECK CONSTRUCTION OPERATIONS. CHANNELIZING DEVICES SUCH AS RETROREFLECTIVE PLASTIC DRUMS MAY BE UTILIZED DURING PAVING AND MEMBRANE OPERATIONS. SEE TRAFFIC CONTROL NOTES ON TRAFFIC CONTROL SHEET 1.
2. SEE TEMPORARY CONCRETE TRAFFIC BARRIER - BRACED DETAILS ON SHEETS 17 AND 18 FOR ADDITIONAL INFORMATION.
3. PLACEMENT OF THE MEMBRANE SHALL START AT THE LOW SIDE OF THE BRIDGE. THE SPLICE SHALL BE AS SHOWN IN THE DETAILS ON THIS PAGE WITH THE HIGH SIDE OVERLAPPING THE LOW SIDE.
4. SEE JOINT, PAVEMENT, AND MEMBRANE LAYOUT ON SHEET 21 FOR PAVEMENT LIFT INFORMATION.
5. AFTER PHASE 3 IS COMPLETE, SHIFT TRAFFIC TO THE RIGHT LANE AND COMPLETE MEMBRANE AND PAVING OPERATIONS.



**BRACED BARRIER DETAIL**  
SCALE: 1" = 1'-0"



**MEMBRANE OVERLAP DETAIL**  
SCALE: 1" = 1'-0"



**LONGITUDINAL BRIDGE SLAB CONSTRUCTION JOINT DETAILS**  
3" = 1'-0"

CLD 15-0223 MODEL: PHASING2



PROJECT NAME:	IRASBURG	PLOT DATE:	2/5/2016
PROJECT NUMBER:	IM DECK(46)	DRAWN BY:	M. SMITH
FILE NAME:	z15dl16+op-107N.dgn	CHECKED BY:	S. BEAUMONT
PROJECT LEADER:	J. BYATT	PHASING SECTIONS SHEET	2
DESIGNED BY:	J. FRENCH	SHEET	16 OF 49