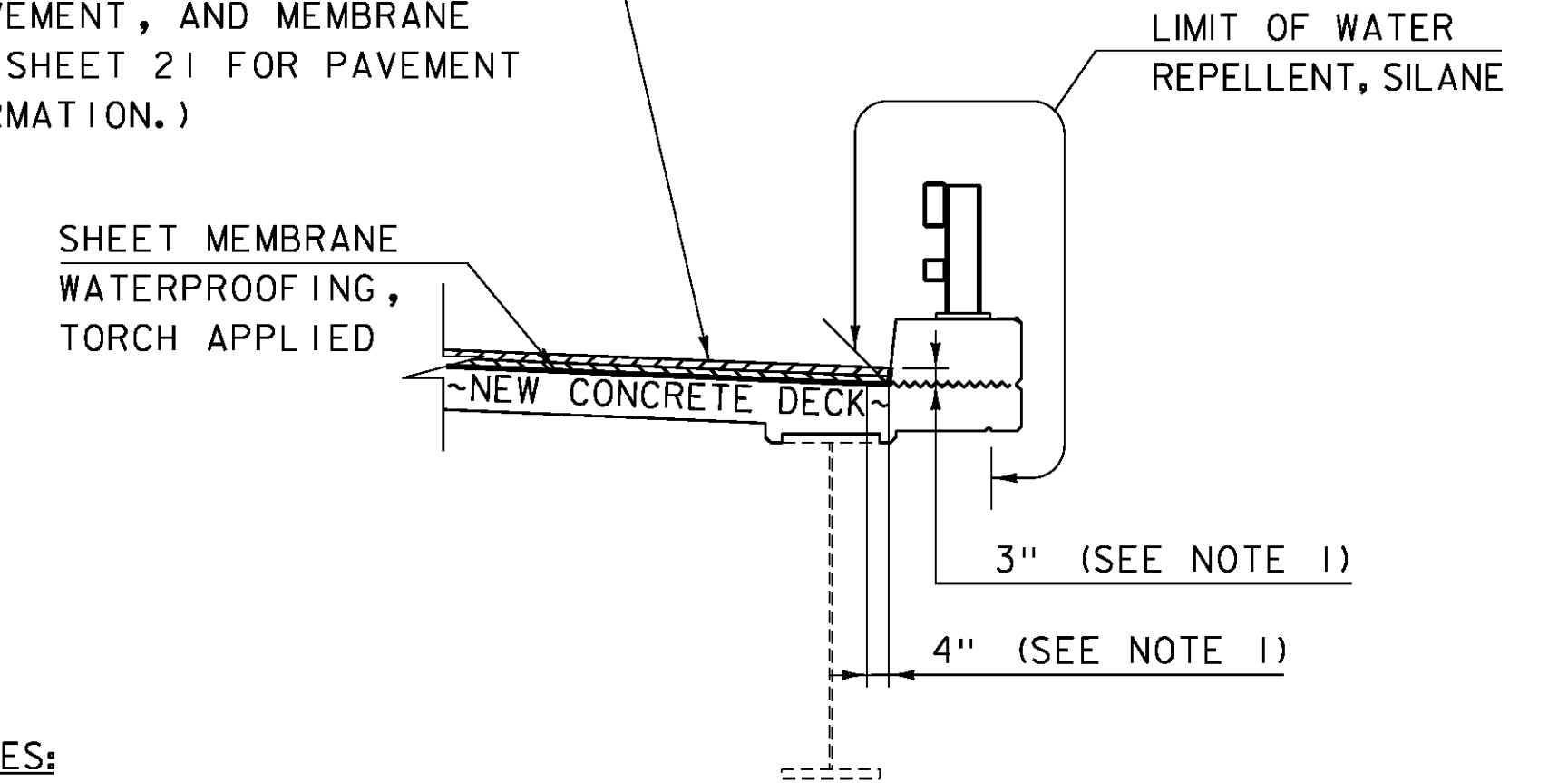


EXISTING TYPICAL BRIDGE SECTION

SCALE: 3/8" = 1'-0"

SPECIAL PROVISION (BITUMINOUS CONCRETE PAVEMENT - BRIDGE MIX - TYPE IVB) (DEPTH VARIES - SEE JOINT, PAVEMENT, AND MEMBRANE LAYOUT ON SHEET 21 FOR PAVEMENT LIFT INFORMATION.)



DETAIL A NOTES:

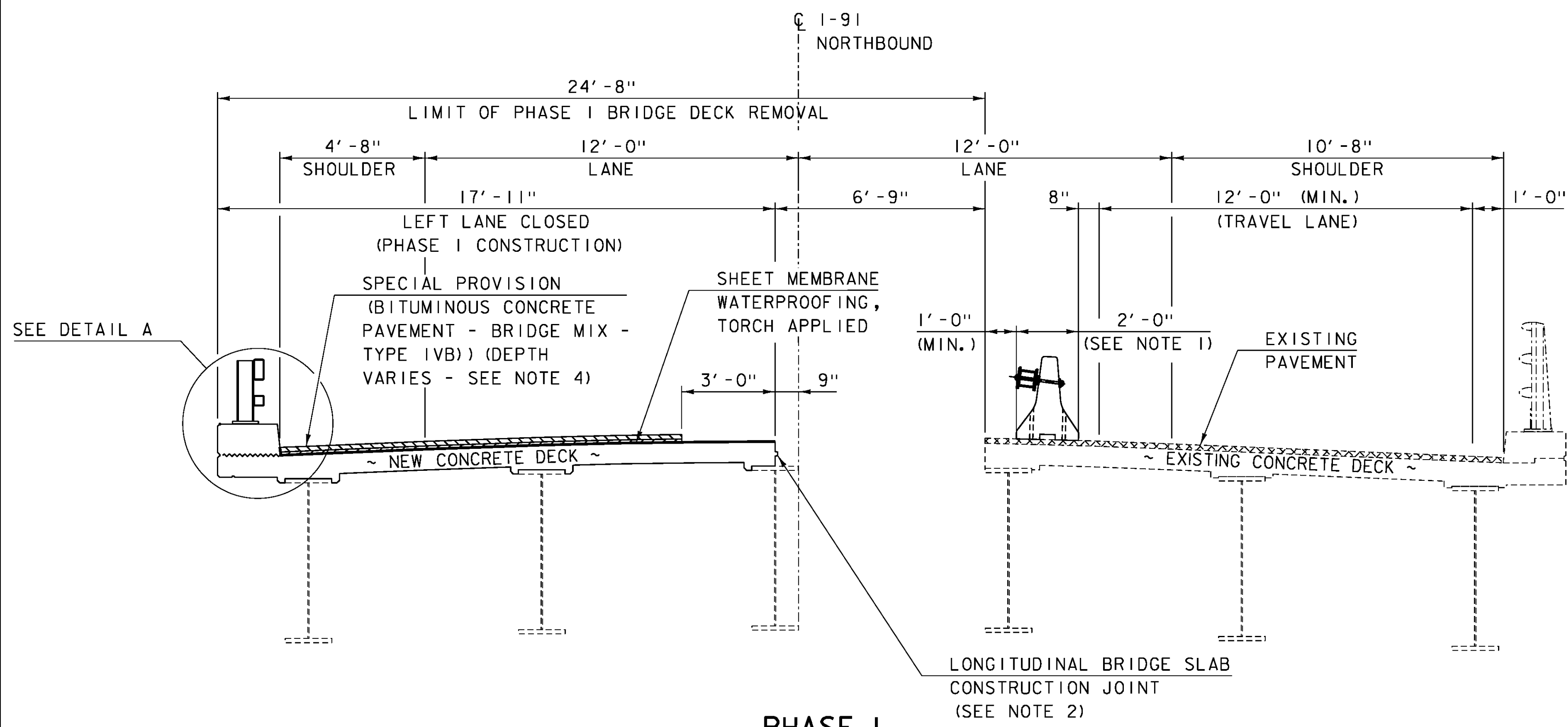
1. INDICATES AREA ALONG DECK AND UP FACE OF CURB FOR PLACEMENT OF TWO COATS OF POLYURETHANE MEMBRANE.
2. POLYURETHANE MEMBRANE AND BLAST CLEANING SHALL BE INCLUDED IN THE UNIT PRICE BID FOR SHEET MEMBRANE WATERPROOFING, TORCH APPLIED.
3. SHEET MEMBRANE WATERPROOFING SHALL EXTEND TO FACE OF CURB AS SHOWN.
4. IN ADDITION TO THE REQUIREMENTS OF SUBSECTION 519.04, BLAST CLEAN 3" UP THE FACE OF CURB PRIOR TO PLACING THE MEMBRANE.

DETAIL A

SCALE: 3/8" = 1'-0"

NOTES:

1. TEMPORARY CONCRETE TRAFFIC BARRIER AND TEMPORARY CONCRETE TRAFFIC BARRIER - BRACED SHALL BE REQUIRED DURING BRIDGE DECK CONSTRUCTION OPERATIONS. CHANNELIZING DEVICES SUCH AS RETROREFLECTIVE PLASTIC DRUMS MAY BE UTILIZED DURING PAVING AND MEMBRANE OPERATIONS. SEE TRAFFIC CONTROL NOTES ON TRAFFIC CONTROL SHEET 1.
2. SEE BRACED BARRIER, MEMBRANE OVERLAP, AND LONGITUDINAL BRIDGE SLAB CONSTRUCTION JOINT DETAILS ON SHEET 16 AND TEMPORARY CONCRETE TRAFFIC BARRIER - BRACED DETAILS ON SHEETS 17 AND 18 FOR ADDITIONAL INFORMATION.
3. PLACEMENT OF THE MEMBRANE SHALL START AT THE LOW SIDE OF THE BRIDGE. THE SPLICE SHALL BE AS SHOWN IN THE DETAILS ON THIS PAGE WITH THE HIGH SIDE OVERLAPPING THE LOW SIDE.
4. SEE JOINT, PAVEMENT, AND MEMBRANE LAYOUT ON SHEET 21 FOR PAVEMENT LIFT INFORMATION.



PHASE I

SCALE: 3/8" = 1'-0"

MODEL: PHASING I
CLD 15-0223

PROJECT NAME: IRASBURG	PLOT DATE: 2/5/2016
PROJECT NUMBER: IM DECK(46)	DRAWN BY: M. SMITH
FILE NAME: z15dl16+op-107N.dgn	CHECKED BY: S. BEAUMONT
PROJECT LEADER: J. BYATT	SHEET 15 OF 49
DESIGNED BY: J. FRENCH	
PHASING SECTIONS SHEET 1	

