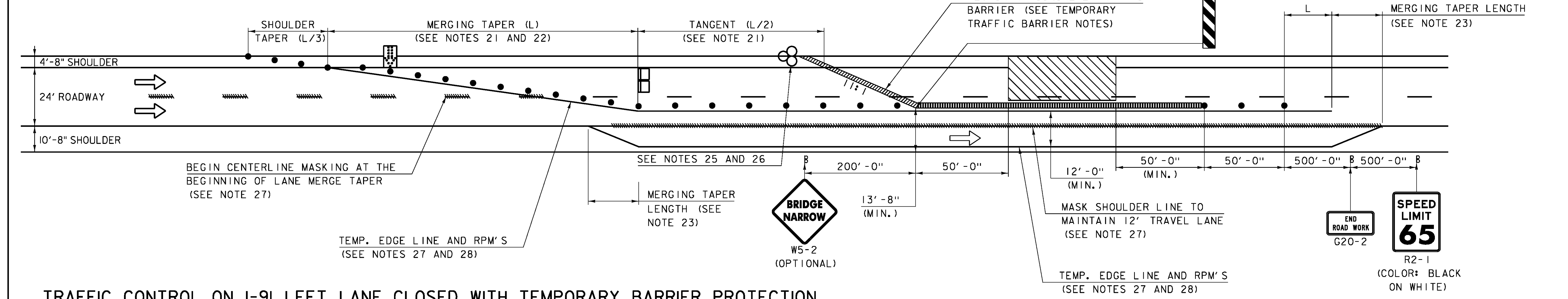


**TRAFFIC CONTROL ON I-91 RIGHT LANE CLOSED WITH TEMPORARY BARRIER PROTECTION**  
(SEE NOTE 13)



**TRAFFIC CONTROL ON I-91 LEFT LANE CLOSED WITH TEMPORARY BARRIER PROTECTION**  
(SEE NOTE 13)

- LEGEND**
- ➔ FLOW OF TRAFFIC
  - RETROREFLECTIVE PLASTIC DRUM
  - ▤ PORTABLE ARROW BOARD
  - TYPE III BARRICADE
  - ▨ WORK AREA
  - ⊠ TRUCK-MOUNTED ATTENUATOR
  - ⊗ ENERGY ABSORPTION ATTENUATOR

POSTED SPEED (MPH)	TAPER LENGTHS (FT)		TANGENT W=12 FT (L/2)	BARRIER FLARE RATE (MIN.)	MIN. BUFFER SPACE LENGTH (FT)	MAXIMUM CHANNELIZING DEVICE SPACING (FT)	
	SHOULDER W=10 FT (L/3)	MERGING 12 FT LANE* (L)				TAPER (S)	TANGENT (2S)
45	150	540	270	1:9	360	45	90
50	170	600	300	1:11	425	50	100
55	185	660	330	1:13	495	55	110
60	200	720	360	1:13	570	60	120
65	215	780	390	1:13	645	65	130

\* SEE NOTE 22.

TAPER RATES ARE DETERMINED USING THE FOLLOWING EQUATION:  
 $L = WS$  FOR POSTED SPEEDS OF 45 MPH OR GREATER  
 $L = WS^2/60$  FOR POSTED SPEEDS OF 40 MPH OR LESS

L = MINIMUM LENGTH OF TAPER  
W = WIDTH OF OFFSET IN FEET. (TYPICAL)  
S = POSTED SPEED IN MPH

NOTE: ALL NOTE REFERENCES REFER TO NOTES ON TRAFFIC CONTROL SHEET 1.

PROJECT NAME: IRASBURG  
PROJECT NUMBER: IM DECK(46)  
FILE NAME: z15d116+op-107N.dgn  
PROJECT LEADER: J. BYATT  
DESIGNED BY: S. BEAUMONT  
TRAFFIC CONTROL SHEET 3  
PLOT DATE: 2/5/2016  
DRAWN BY: S. BEAUMONT  
CHECKED BY: L. GREER  
SHEET 13 OF 49

CLD 15-0223 MODEL+TCP3

