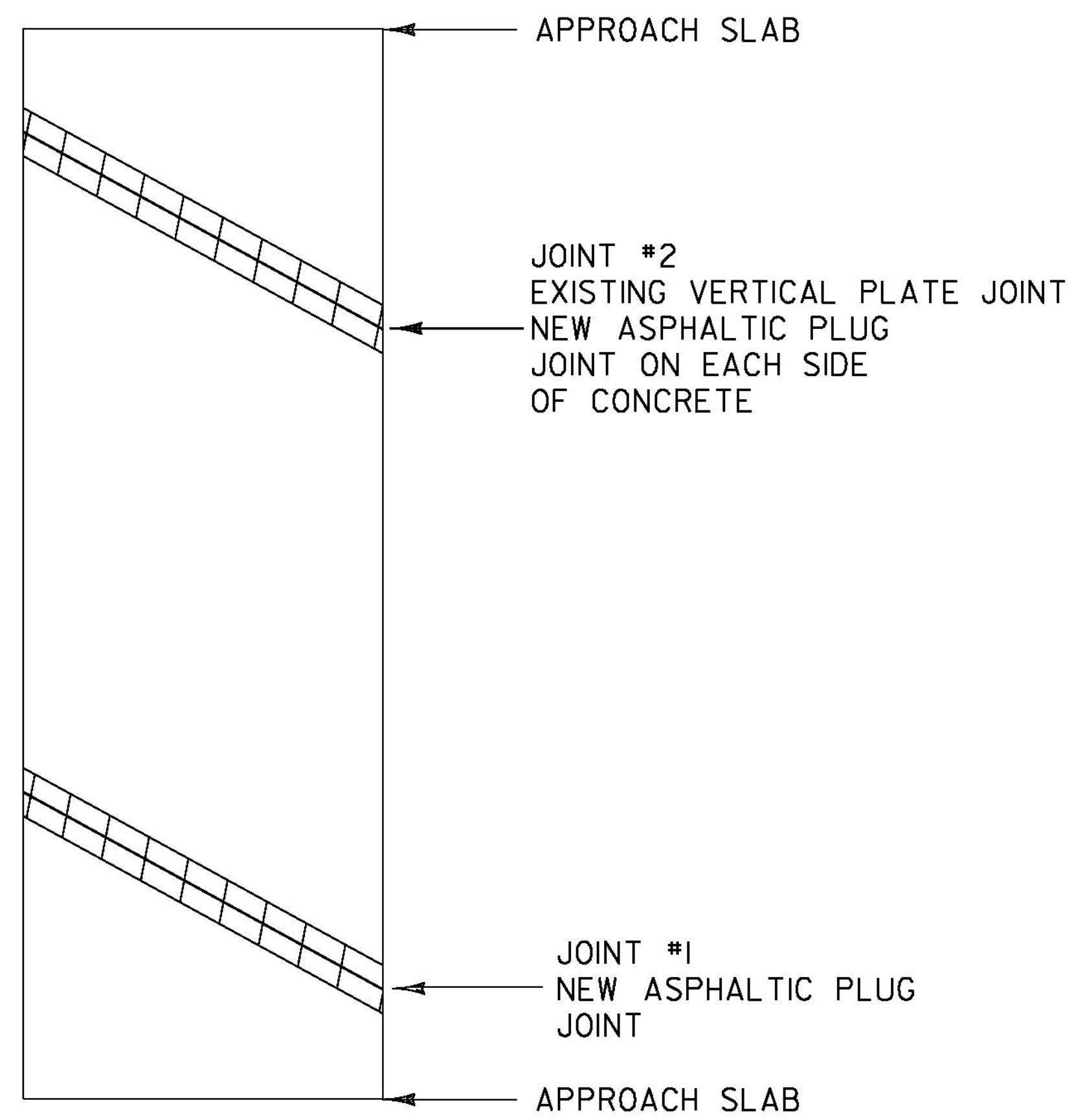


↑
NORTHBOUND
DIRECTION OF TRAVEL



BRIDGE #37N

MM 50.000

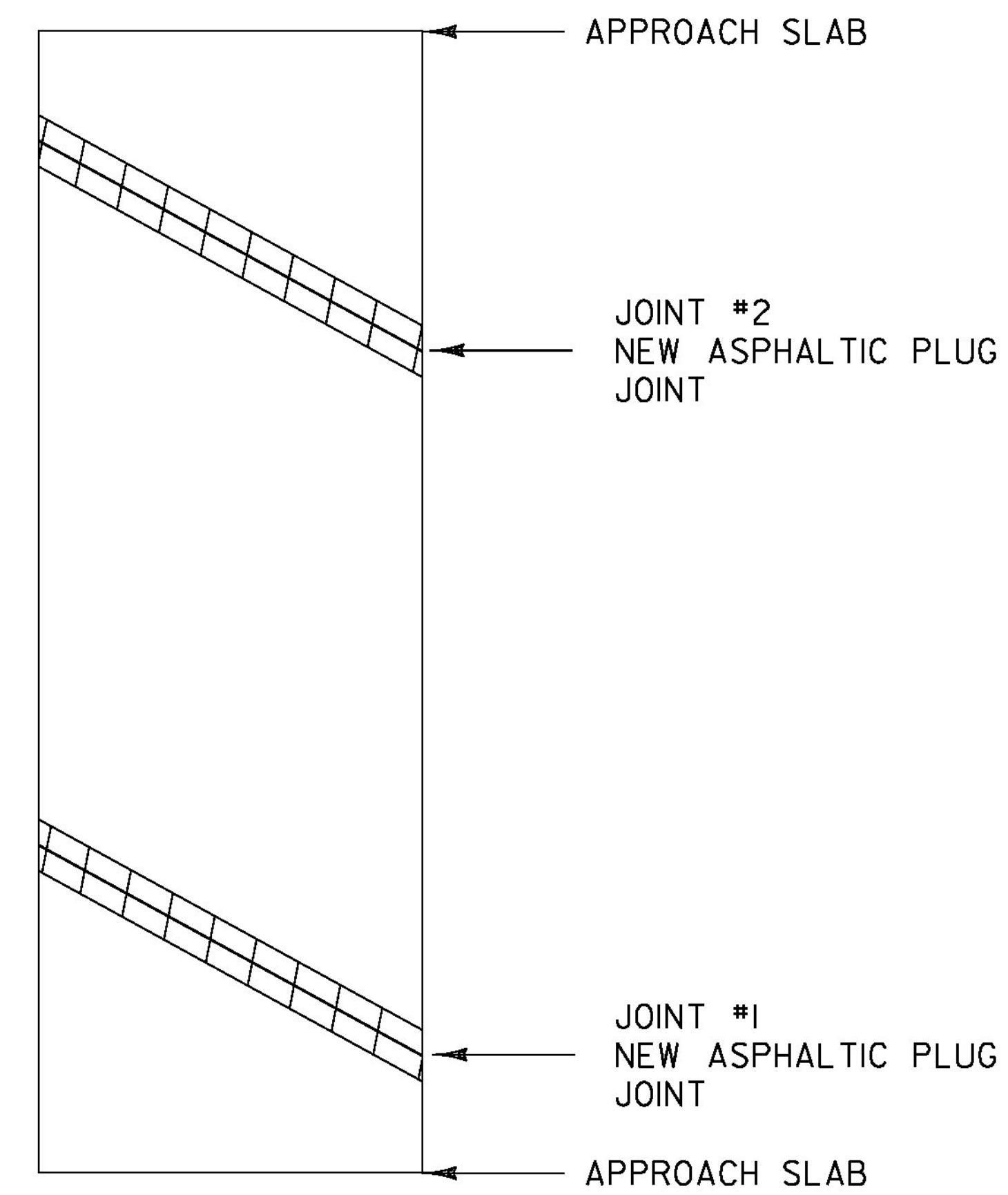
LENGTH OF ASPHALTIC PLUG JOINTS:

JOINT #1 - 43'

JOINT #2 - 43' X 2 = 86'

TOTAL = 129'

↑
NORTHBOUND
DIRECTION OF TRAVEL



BRIDGE #38N

MM 50.290

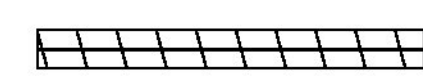
LENGTH OF ASPHALTIC PLUG JOINTS:

JOINT #1 - 43'

JOINT #2 - 43'

TOTAL = 86'

LEGEND



EXISTING BRIDGE JOINTS TO BE
REPAIRED WITH ASPHALTIC PLUG JOINT

NOT TO SCALE

PROJECT NAME:	BERLIN-MONTPELIER
PROJECT NUMBER:	IM SURF(45)
FILE NAME:	I3a636/pvtmgt/p13a636_wrk.dgn
PROJECT LEADER:	J. HARRINGTON
DESIGNED BY:	PVT. MGT.
BRIDGE DETAIL SHEET	2
DATE:	06-JUN-2014
DRAWN BY:	PVT. MGT.
CHECKED BY:	PVT. MGT.
SHEET	31 OF 64