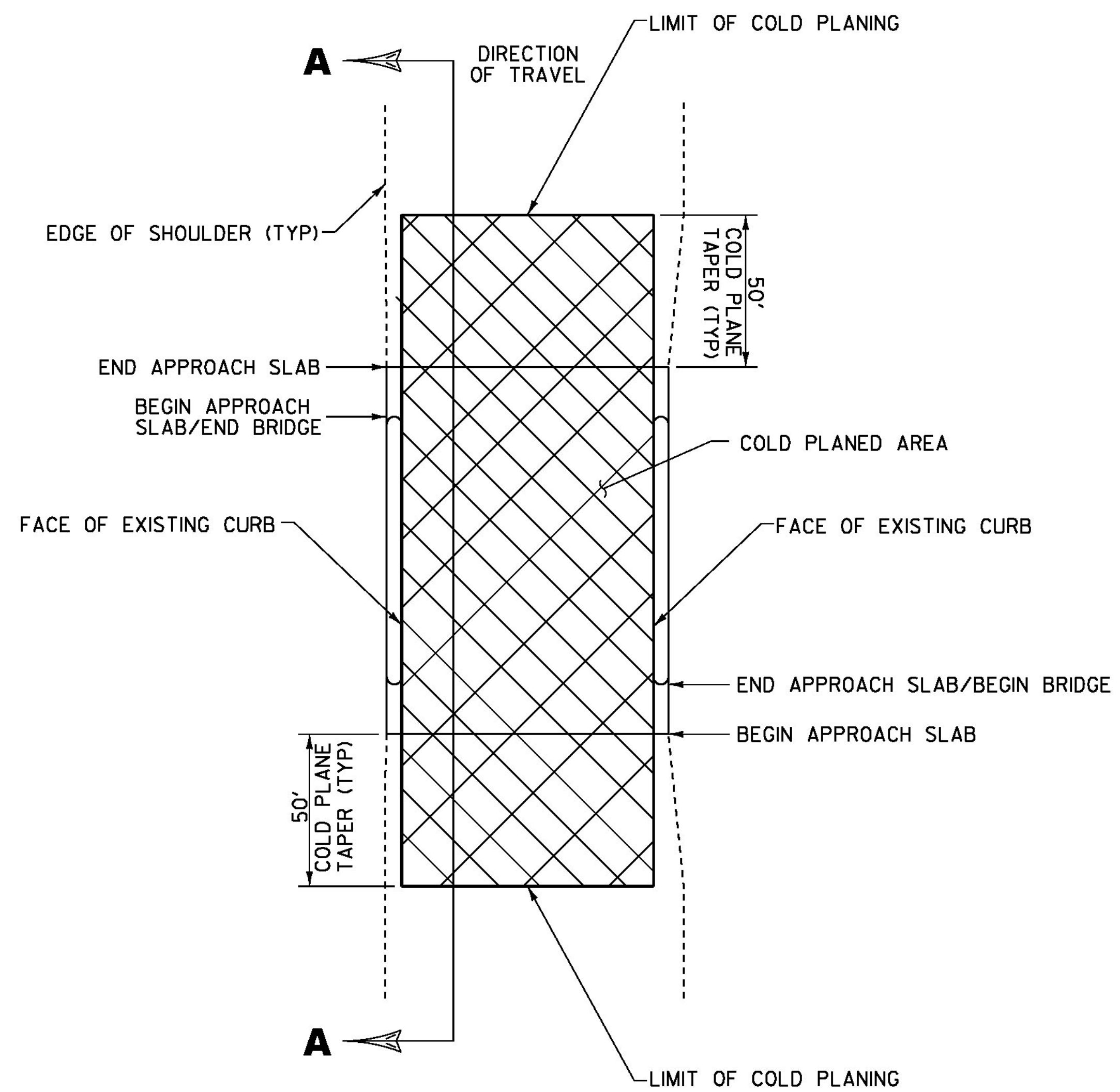


BRIDGE COLD PLANE DETAIL

BRIDGE #11 BARRE CITY MM 1.398



BRIDGE COLD PLANE TYPICAL PLAN

NOT TO SCALE

NOTES:

1. REFER TO ASPHALTIC PLUG JOINT DETAIL SHEET, SD-516.10. ALL NEW JOINTS SHALL BE PAID FOR UNDER ITEM 516.10, "BRIDGE EXPANSION JOINT, ASPHALTIC PLUG."
2. THE CONTRACTOR SHALL TAKE PRECAUTIONS TO AVOID DAMAGING DRAINAGE STRUCTURES AND EXPANSION JOINTS. ANY DAMAGE CAUSED BY THE CONTRACTOR SHALL BE REPAIRED BY THE CONTRACTOR AT NO COST TO THE STATE.
3. THE CONTRACTOR SHALL TAKE PRECAUTIONS TO AVOID THE ACCUMULATION OF DEBRIS IN THE DRAINAGE STRUCTURES LOCATED AT CURB LINE AND IN THE EXPANSION JOINTS. THE CONTRACTOR SHALL EXAMINE THESE BRIDGE FEATURES ON A DAILY BASIS TO ENSURE THAT DEBRIS HAS NOT ACCUMULATED. ANY DEBRIS WHICH IS PRESENT SHALL BE REMOVED BY THE CONTRACTOR AT NO COST TO THE STATE.
4. THE CONTRACTOR SHALL USE CAUTION WHEN COLD PLANING AND PAVING OPERATIONS OCCUR ON BRIDGE DECKS. SHOULD ANY DAMAGE OCCUR TO THE DECK OR MEMBRANE AS A RESULT OF THESE OPERATIONS THE ENGINEER SHALL CONTACT THE VTRANS CONSTRUCTION STRUCTURES ENGINEER TO PROVIDE AN ASSESSMENT OF THE DAMAGE AND RECOMMEND ANY NECESSARY REPAIRS. THE CONSTRUCTION STRUCTURES ENGINEER WILL ALSO DETERMINE IF THE DAMAGE WAS AVOIDABLE. IF THE CONTRACTOR IS DETERMINED BY THE ENGINEER TO BE AT FAULT FOR THE DAMAGE, THE RECOMMENDED REPAIRS SHALL BE COMPLETED BY THE CONTRACTOR AT NO COST TO THE STATE.

PROJECT NAME: BERLIN-BARRE CITY
 PROJECT NUMBER: NH SURF(44)

FILE NAME: I3B634/pvtmgt/pi3b634.dgn PLOT DATE: 06-JUN-2014
 PROJECT LEADER: J. HARRINGTON DRAWN BY: PVT. MGT.
 DESIGNED BY: PVT. MGT. CHECKED BY: PVT. MGT.
 BRIDGE DETAIL SHEET 1 SHEET 13 OF 64

NOT TO SCALE