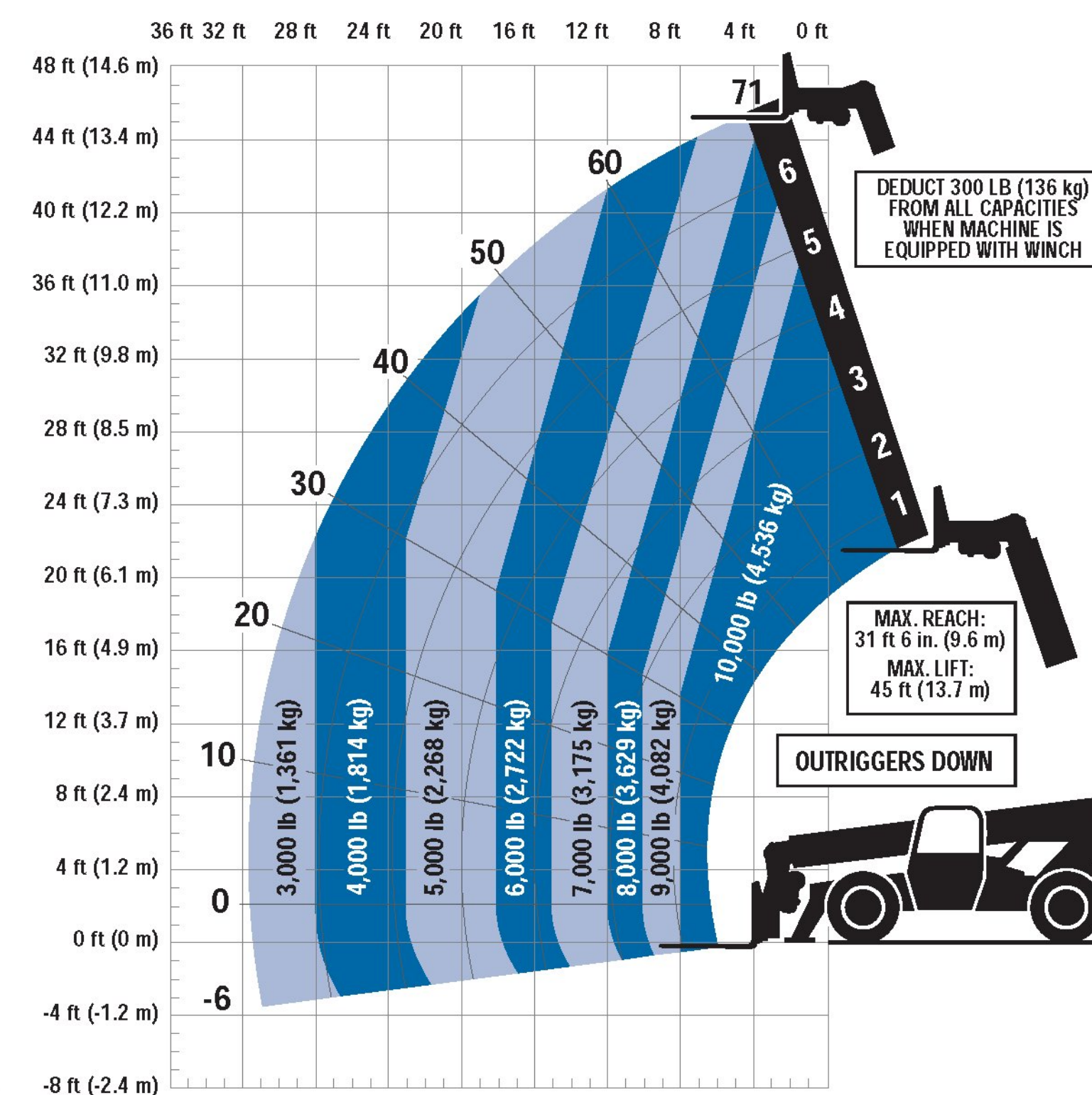
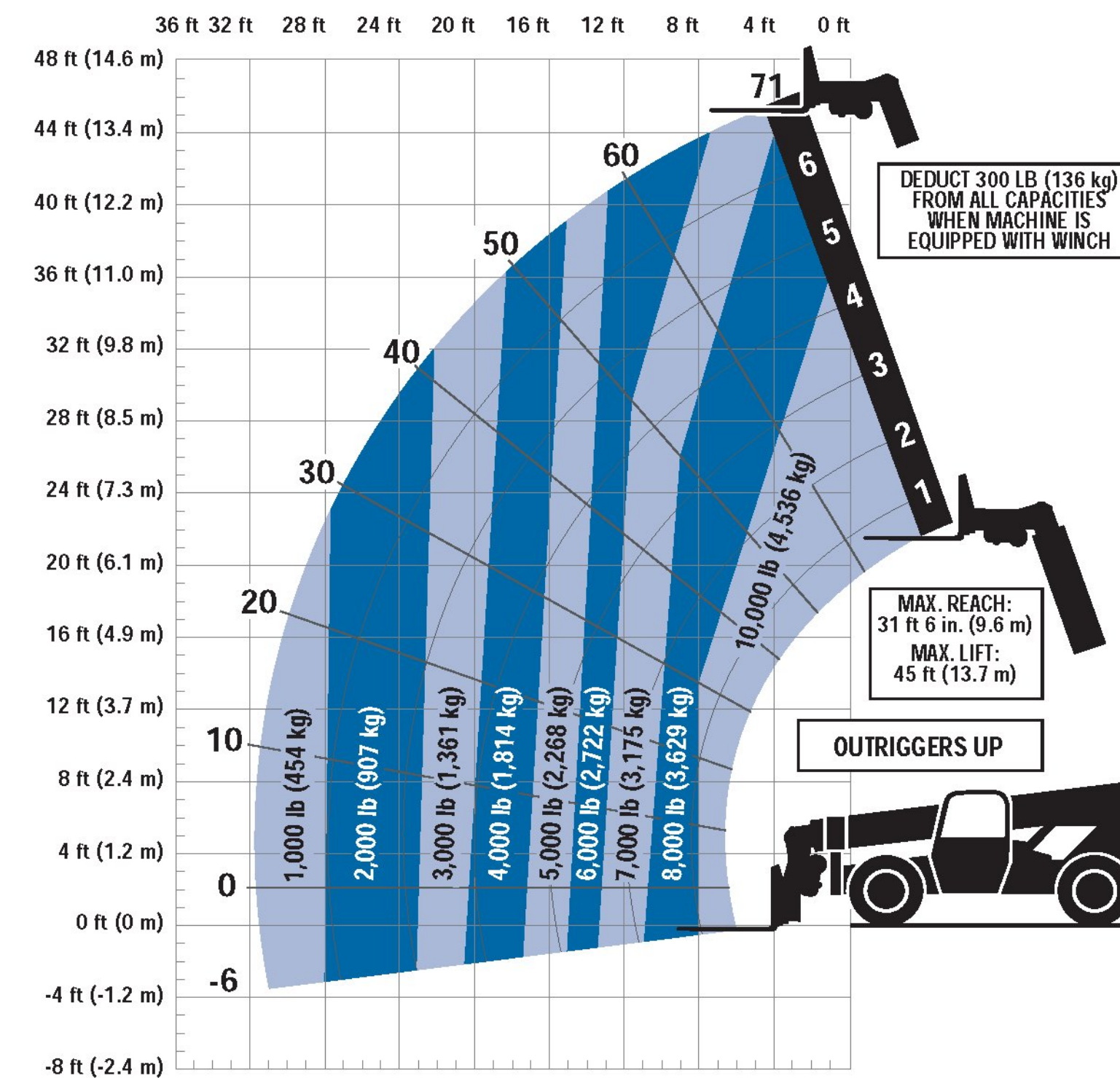


GRADALL®

Model 534D10-45 TELEHANDLER



Dimensions

Length (less forks) 237 in. (6.01 m)
 Width 98.8 in. (2.50 m)
 Height 93 in. (2.36 m)
 Wheelbase 135 in. (3.42 m)
 Ground Clearance 19.3 in. (490 mm)
 Outside Turning Radius 175 in. (4.44 m)
 Max. Reach from Front Tires to
 24 in. (610 mm) Load Center 31.5 ft
 (9.60 m)

IMPORTANT

Rated lift capacities shown are with machine equipped with carriage and pallet forks. The machine must be level on a firm surface with undamaged, properly inflated tires. Machine specifications and stability are based on rated lift capacities at specific boom angles and boom lengths. (If specifications are critical, the proposed application should be discussed with your dealer.)

DO NOT exceed rated lift capacity loads, as unstable and dangerous machine conditions will result.

DO NOT tip the machine forward to determine the allowable load.

Use only JLG approved attachments with proper material handler model/attachment load capacity charts displayed in the operator's cab. OSHA requires all rough terrain forklift operators be trained according to OSHA 29 CFR 1910.178 (1).



JLG Industries, Inc.
 1 JLG Drive
 McConnellsburg, PA 17233-9533
 Telephone 717-485-5161
 Toll-free in US 877-JLG-LIFT
 Fax 717-485-6417
 www.jlg.com

Due to continuous product improvements, JLG Industries reserves the right to make specification and/or equipment changes without prior notification. This machine meets or exceeds ASME B56.6-2002 as originally manufactured for intended applications.

Form No.: SS-G534D1045-0104-15M
 Part No.: 3132206
 R060501
 Printed in USA