

STA 7534+92.50 (MM 142.707)
END LYNDON IM 091-3(51)

TO
EXIT #25

INTERSTATE 91 NORTHBOUND

N 72°07'02" W

HVCTRL #2

MATCH LINE STA 7529+25, SEE PREVIOUS SHEET

7530+00

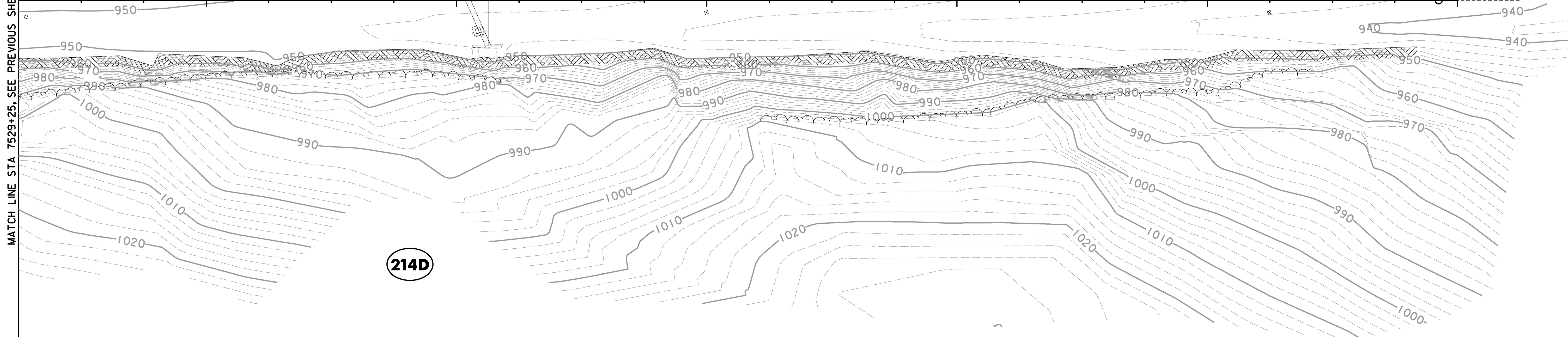
7531+00

7532+00

7533+00

7534+00

7535+00



214D

EXISTING ROW

LEGEND

DIRECTION OF TRAFFIC

SOIL MAP UNIT SYMBOL (SEE SHEET 14 FOR DETAILS)

0 20 40
SCALE IN FEET

CHA

PROJECT NAME: LYNDON	PLOT DATE: 12/13/2016
PROJECT NUMBER: IM 091-3(51)	DRAWN BY: J. HEALD
FILE NAME: z13a370bdr_ero_ex.dgn	CHECKED BY: J. SHIELDS
DESIGNED BY: J. OLSEN	SHEET 16 OF 35
EPSC EXISTING CONDITIONS PLAN SHEET 2	

FILE NAME = W:\P\c\eroc\ANY\K\A\297952\CADD\MSTN13a370\Consult\eroc\eroc.dgn
DATE/TIME = 12/13/2016
USER = 5323