

CLEARING AND GRUBBING, INCLUDING  
INDIVIDUAL TREES AND STUMPS  
STA 1982+63 LT - STA 1987+00 LT

COMMON EXCAVATION (OVERBURDEN REMOVAL)  
STA 1982+63 LT - STA 1987+00 LT

SOLID ROCK EXCAVATION  
STA 1982+50 LT - STA 1987+00 LT

REMOVING SIGNS  
STA 1985+06 LT

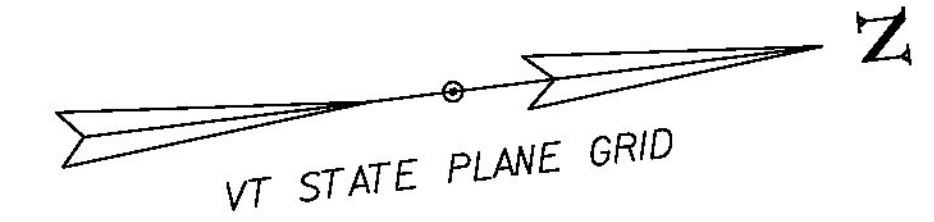
ERECTING SALVAGED SIGNS  
STA 1985+06 LT

SETTING SALVAGED POST  
STA 1985+06 LT

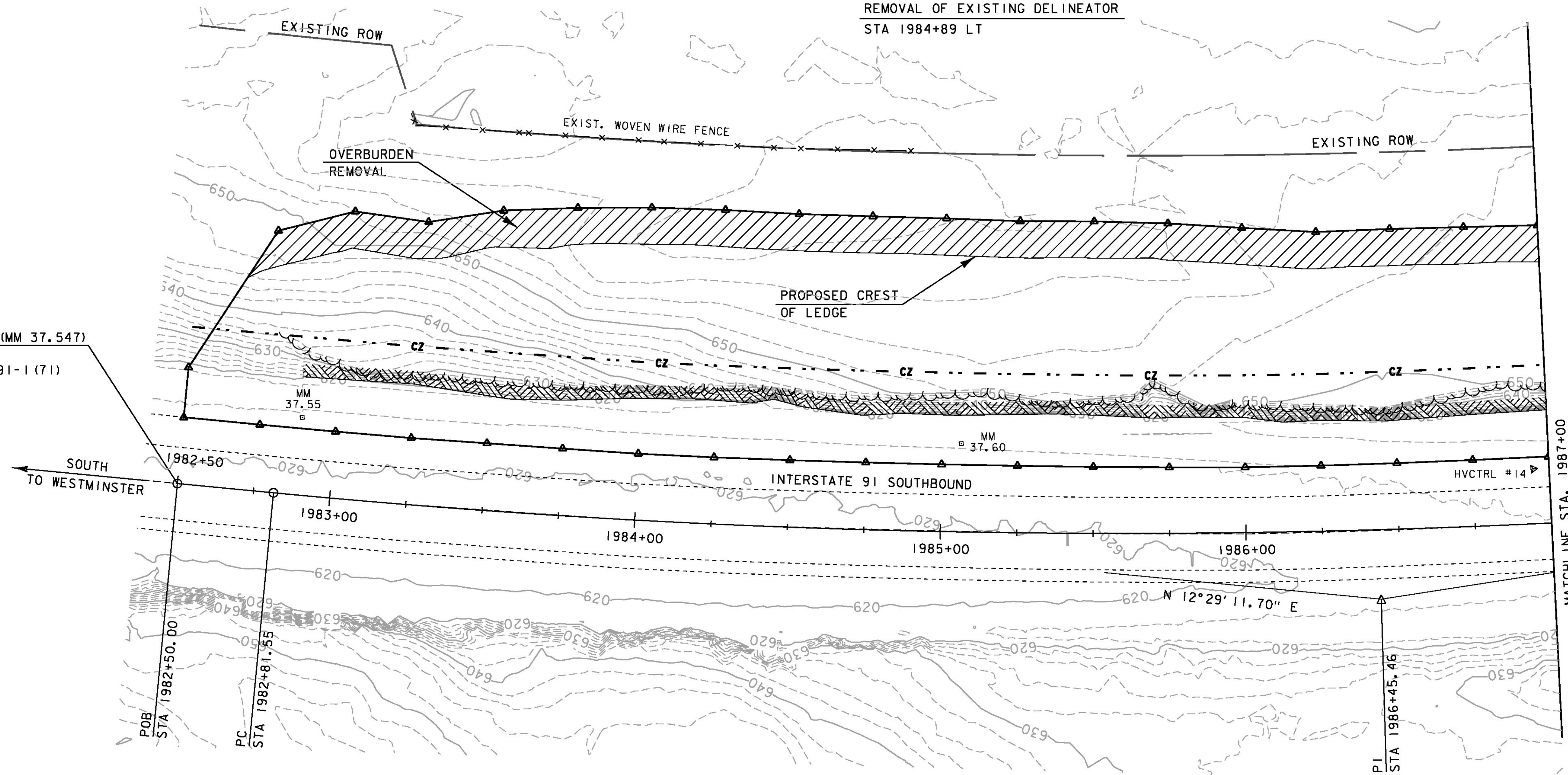
DELINEATOR WITH STEEL POST  
STA 1984+89 LT

REMOVAL OF EXISTING DELINEATOR  
STA 1984+89 LT

|              |             |
|--------------|-------------|
| I-91 CURVE 1 |             |
| DELTA =      | 14° 18' 18" |
| D =          | 1° 58' 33"  |
| R =          | 2900.00'    |
| T =          | 363.91'     |
| L =          | 724.04'     |
| E =          | 22.74'      |



STA 1982+50.00 (MM 37.547)  
BEGIN PROJECT  
ROCKINGHAM 1M 091-1 (71)



|                 |                |              |                |
|-----------------|----------------|--------------|----------------|
| PROJECT NAME:   | ROCKINGHAM     | PLOT DATE:   | 29-JAN-2016    |
| PROJECT NUMBER: | 1M 091-1(71)   | DRAWN BY:    | A. KEMPTON     |
| FILE NAME:      | d13a366nul.dgn | CHECKED BY:  | M. GAMELIN     |
| PROJECT LEADER: | B. MARTIN      | PLAN SHEET 1 | SHEET 10 OF 35 |