

GPS CONTROL POINTS

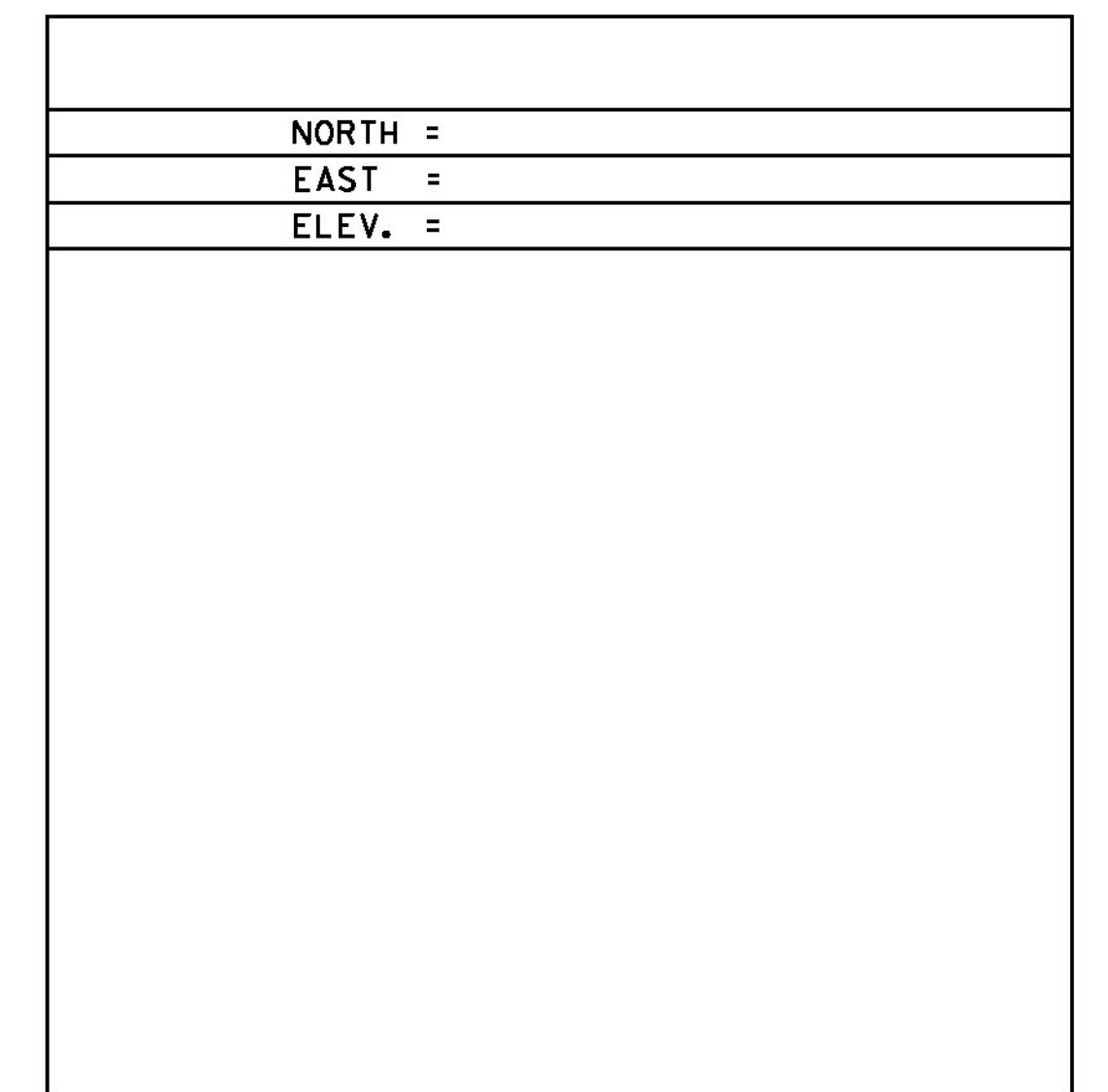
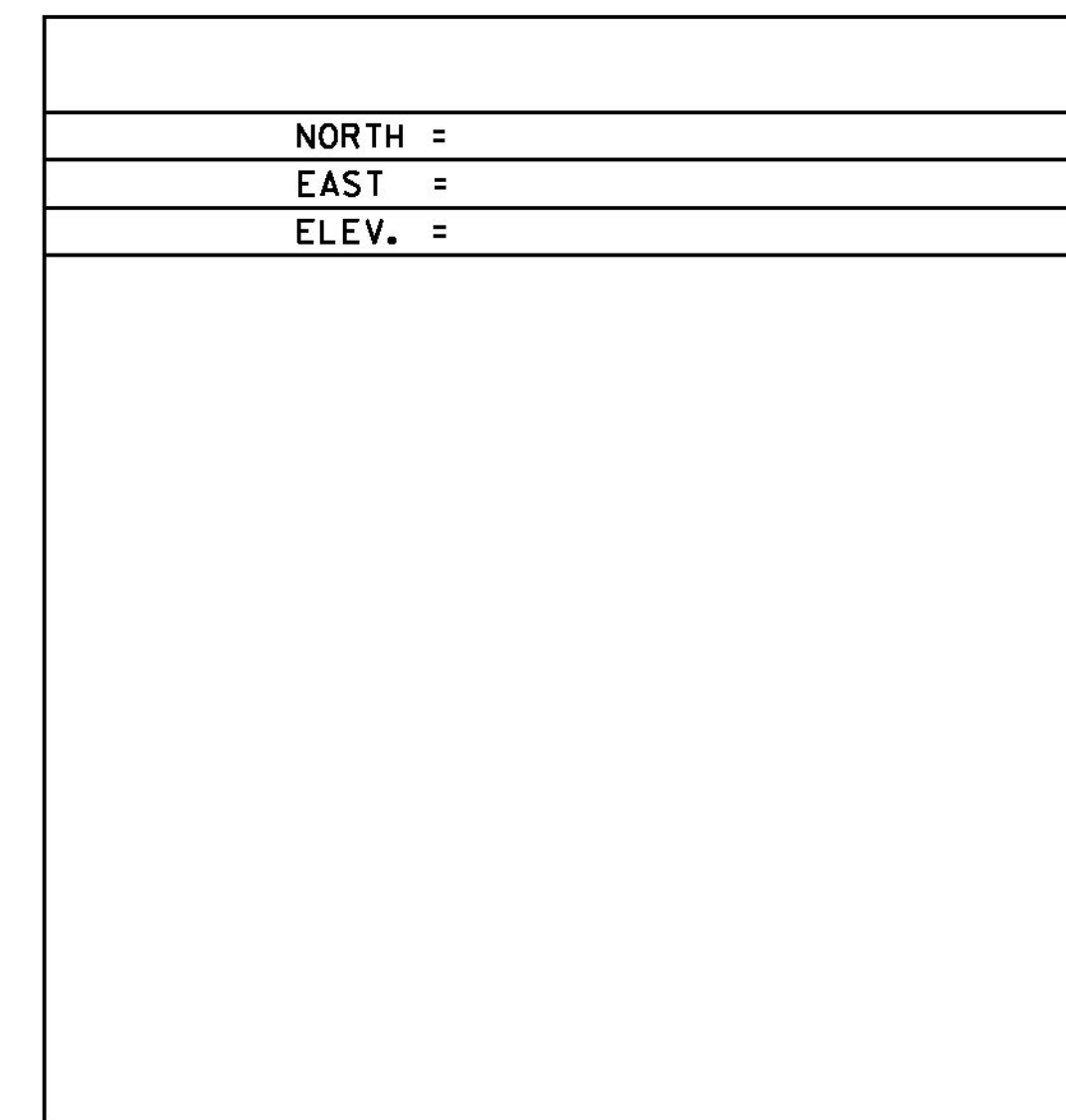
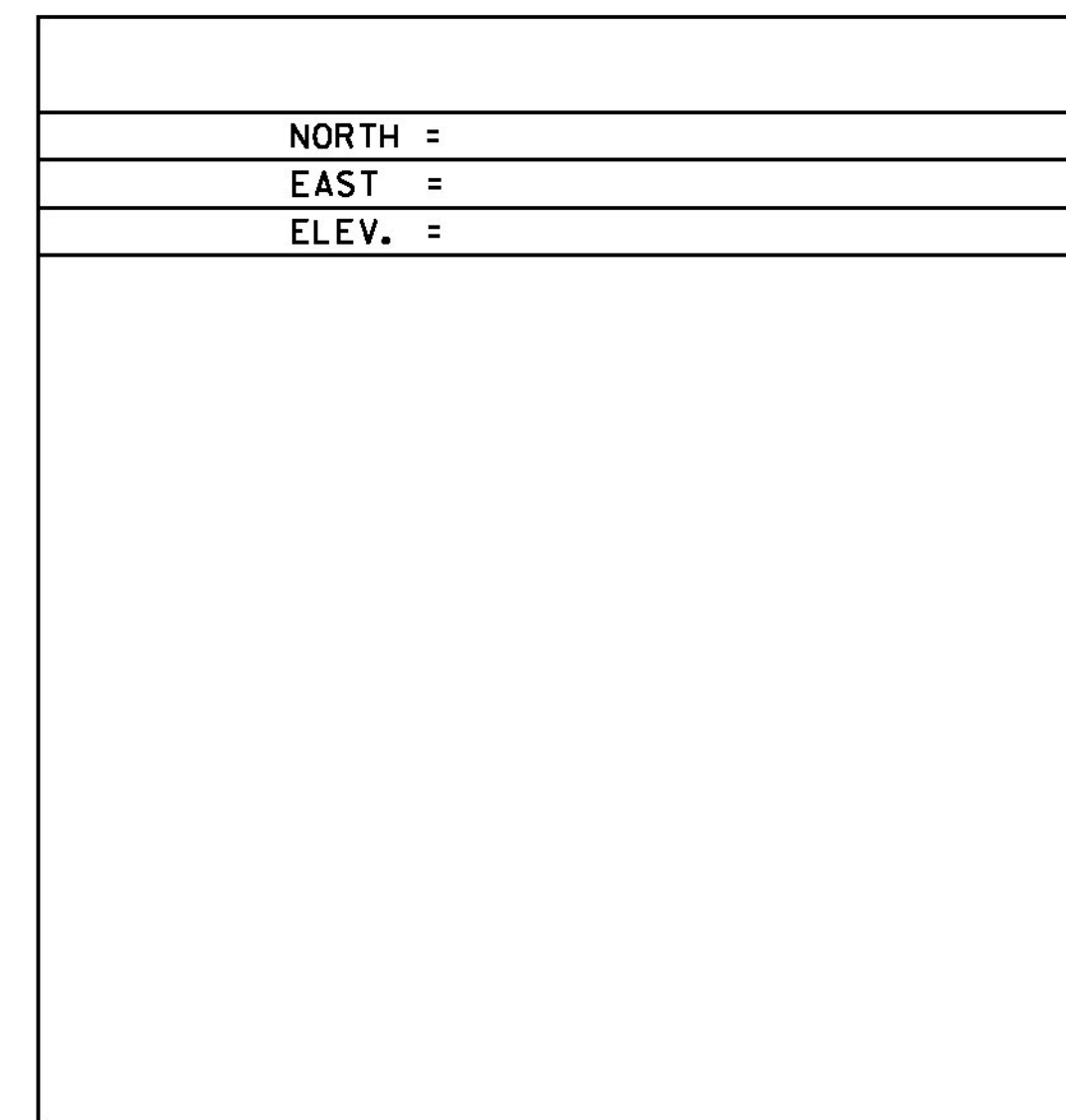
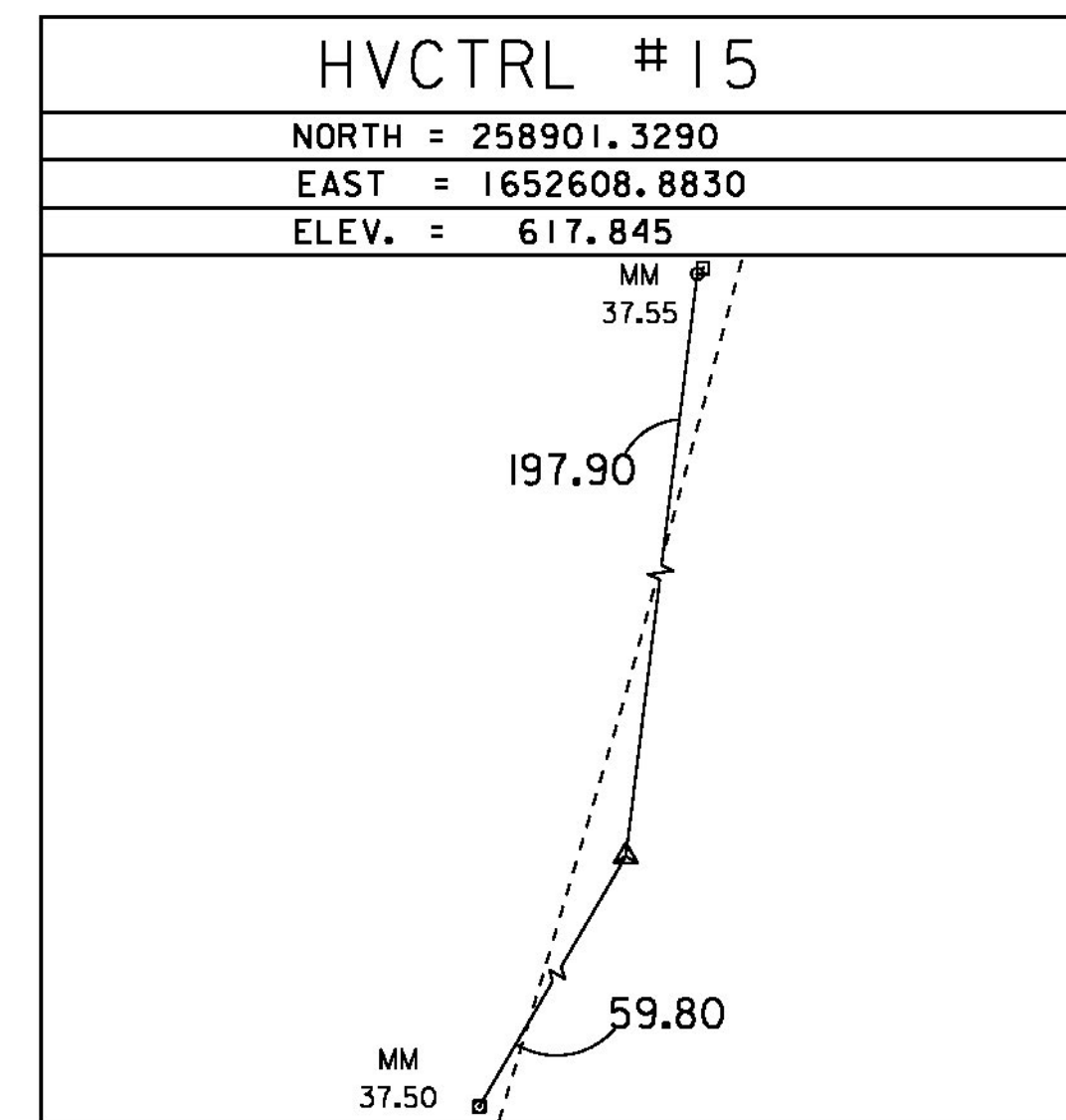
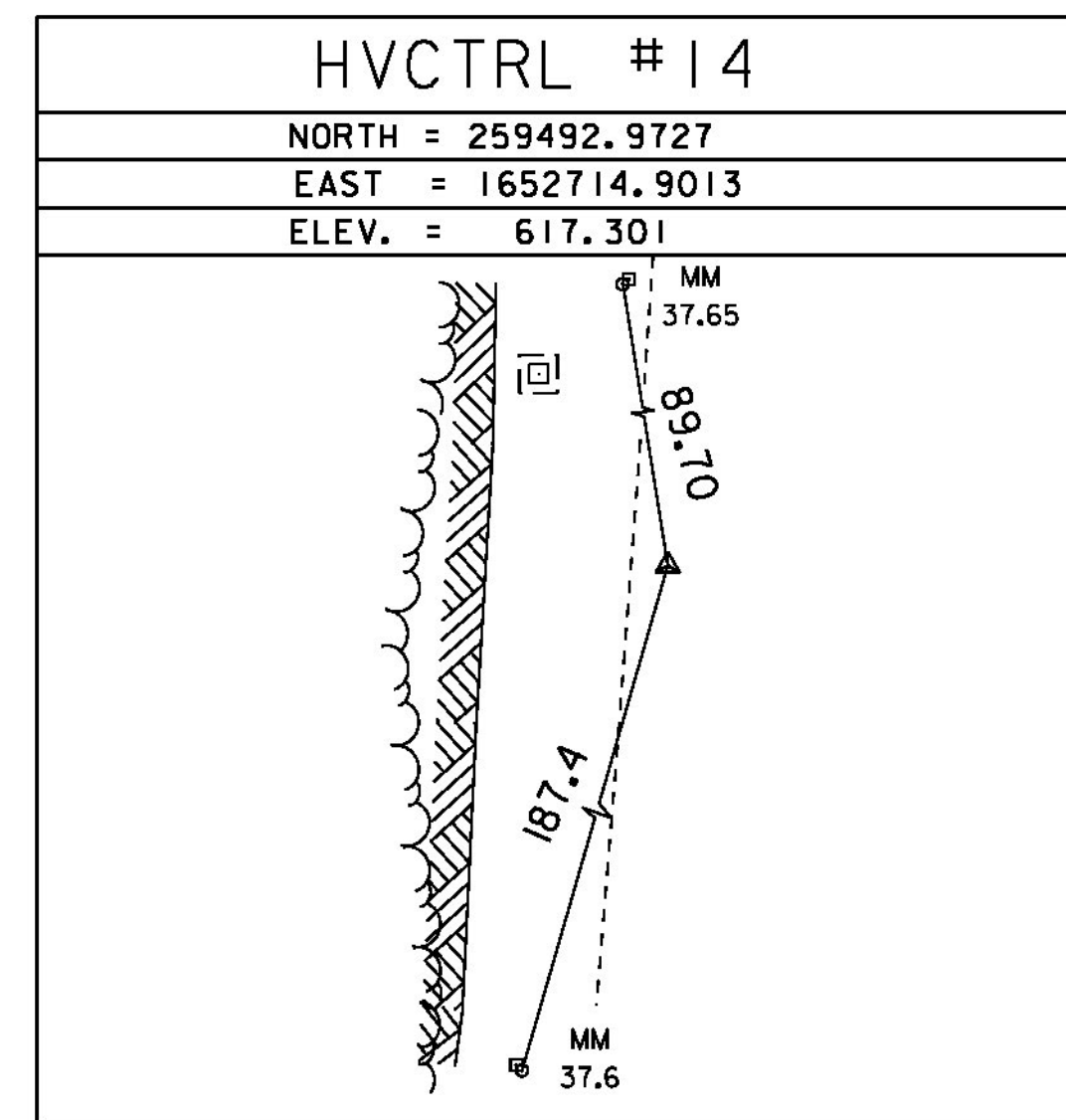
PT #1 191 EXIT 6
 NORTH = 247458.0100
 EAST = 1650238.2400
 ELEV. = 504.130

GENERAL LOCATION ROCKINGHAM VT, LOCATED IN THE MEDIAN BETWEEN I-91 NB MILE MARKER'S 35.20 AND 35.25. SET FLUSH WITH GROUND SURFACE IN THE TOP OF A 30 CM DIAMETER CONCRETE MONUMENT. IT IS 6.1 M E OF AND ABOUT LEVEL WITH THE EDGE OF PAVEMENT OF THE SB LANE, 7.1 M W OF AND ABOUT LEVEL WITH THE EDGE OF PAVEMENT OF THE NB LANE, 6.6 M NE OF THE NORTHEAST CORNER OF THE CONCRETE CURB OF A SB BRIDGE, 9.0 M NW OF THE NORTHWEST CORNER OF THE CONCRETE CURB OF A NB BRIDGE, 4.6 M S OF A GUARD RAIL, AND 0.3 M N OF A WITNESS POST.

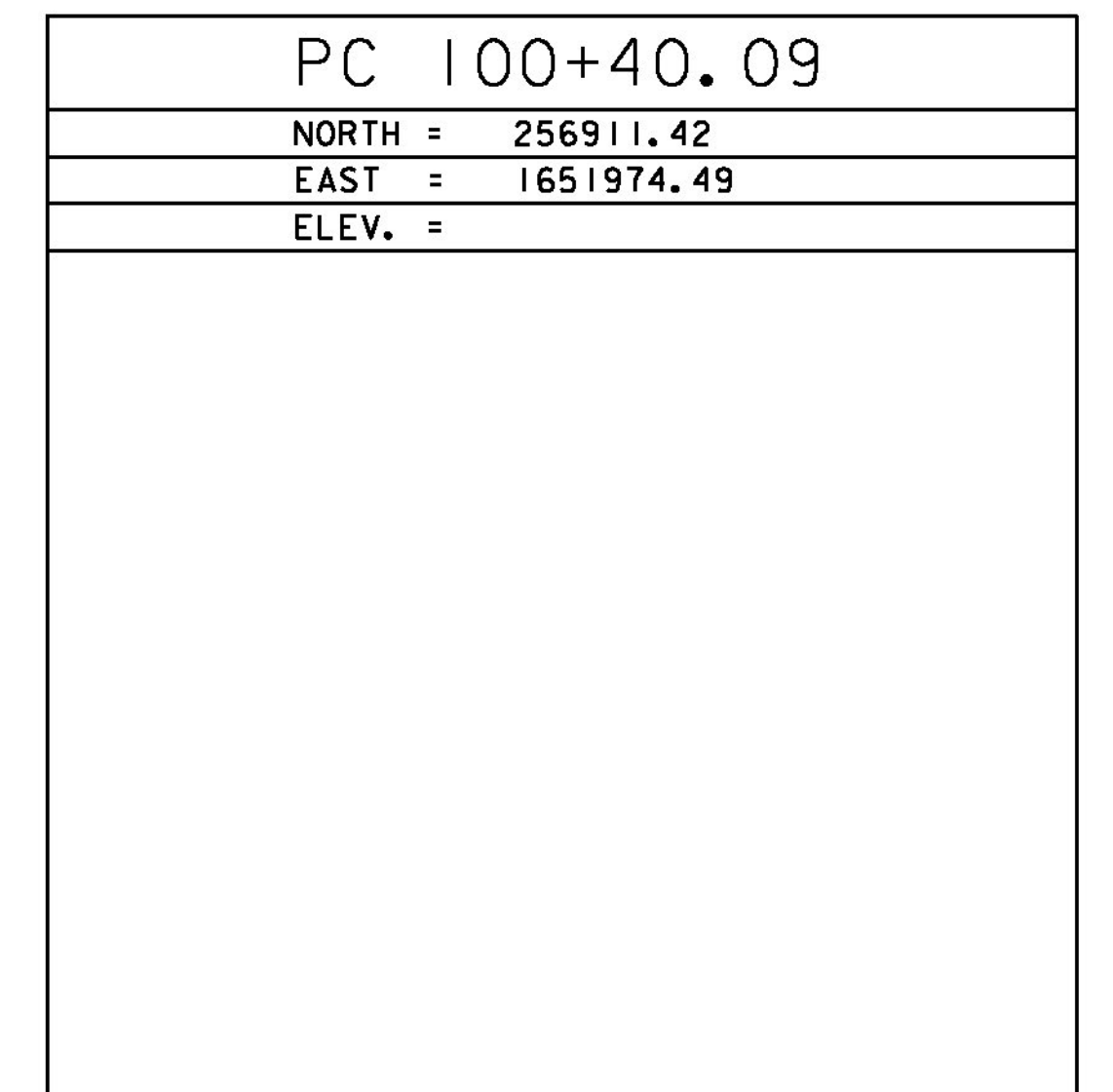
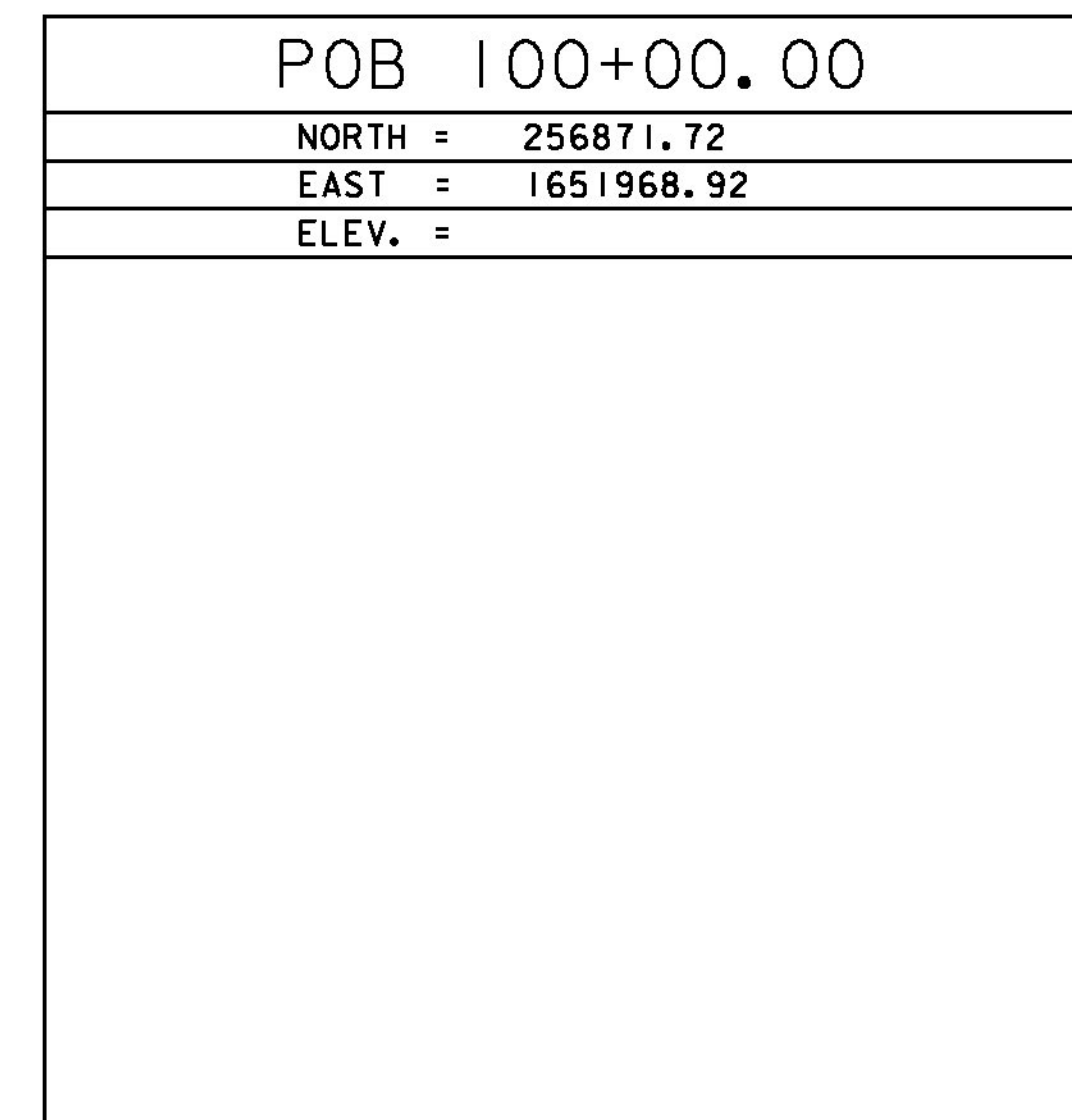
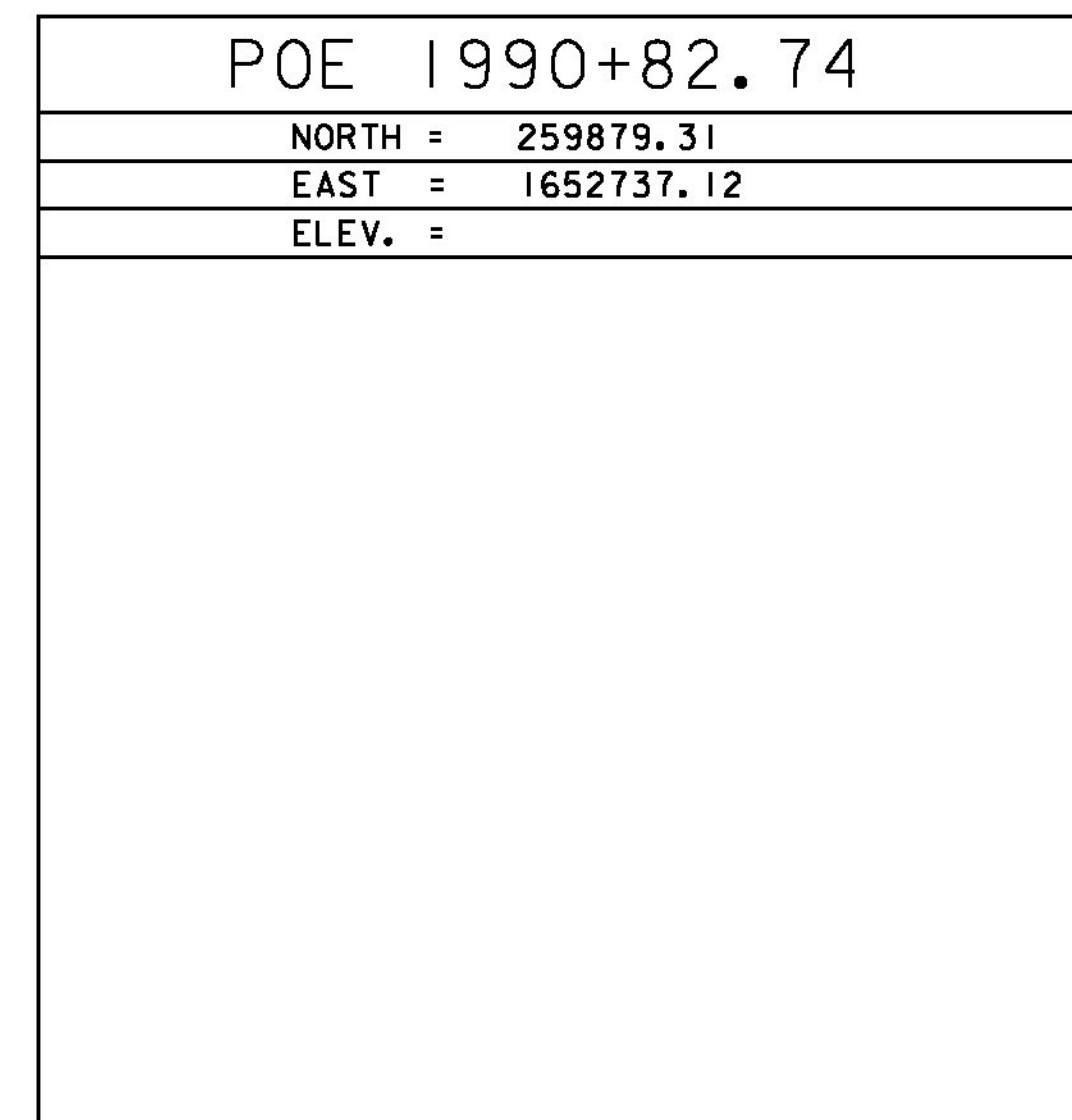
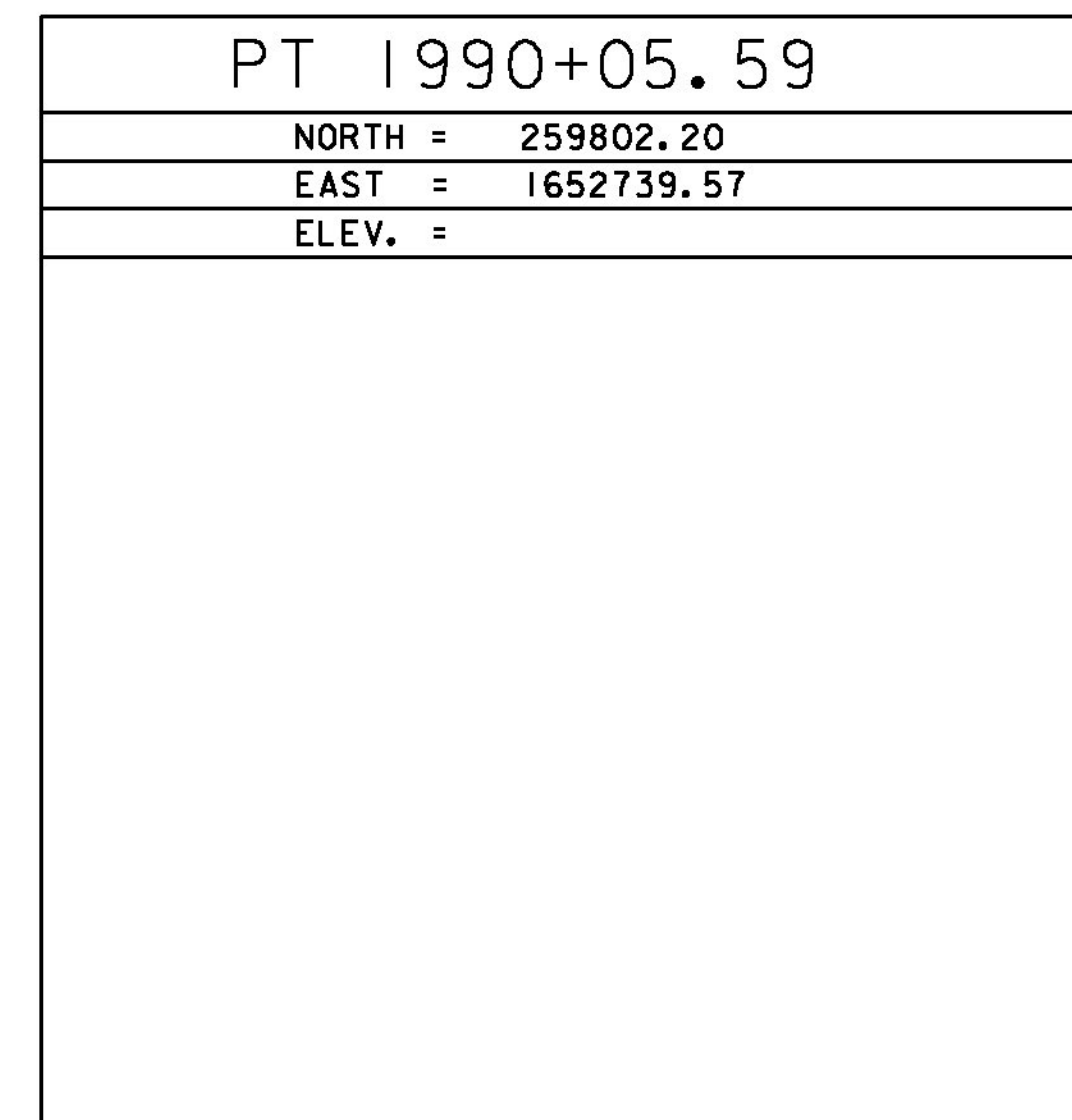
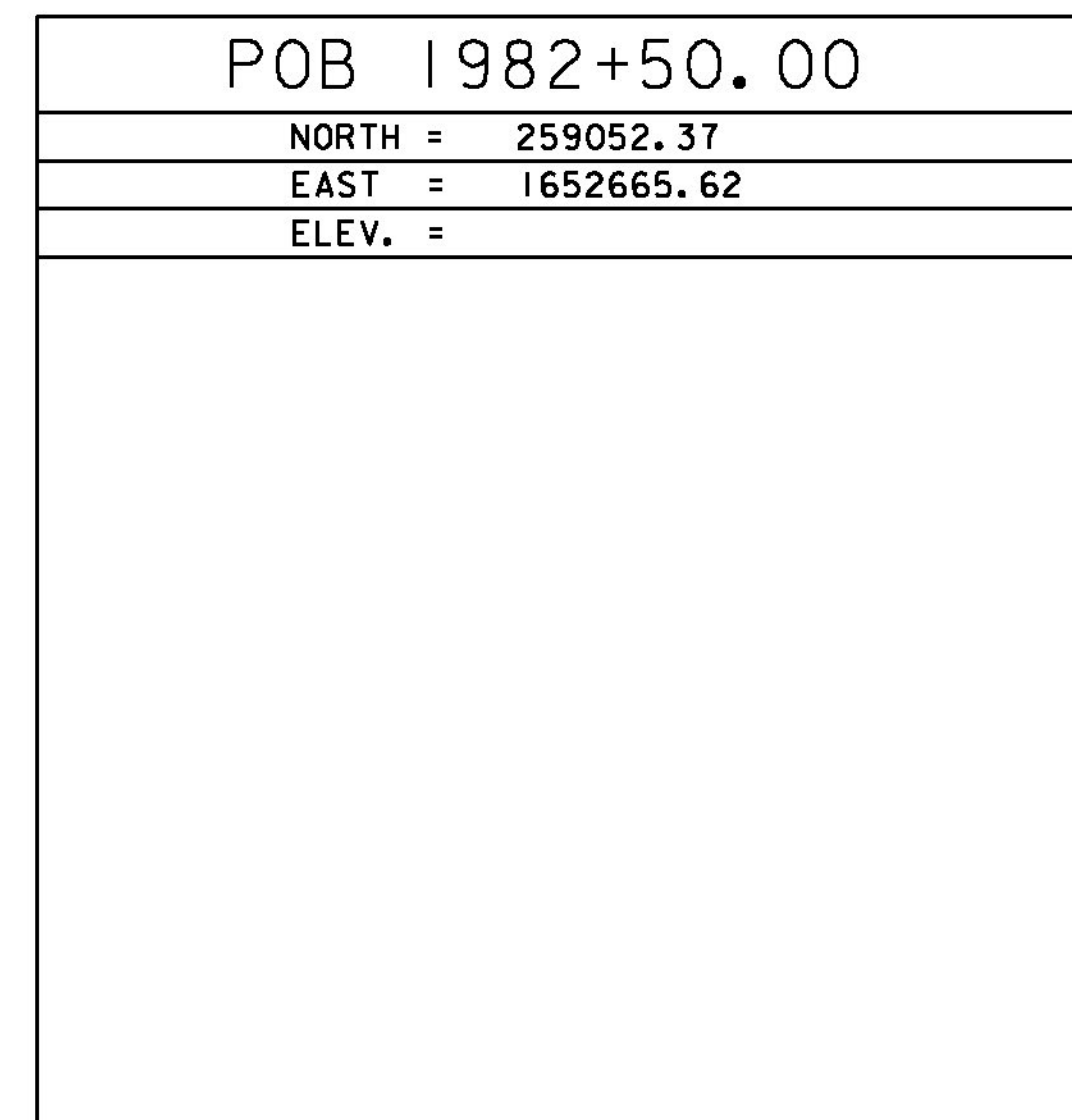
PT #2 191 EXIT 6 AZ MK
 NORTH = 249990.8100
 EAST = 1650387.6100
 ELEV. = 383.950

GENERAL LOCATION, ROCKINGHAM VT. I-91 NORTHBOUND MILE MARKER 35.60, THE SITE OF THE MARK ON THE LEFT IN THE MEDIAN JUST SOUTH OF A U-TURN. IT IS 2.6 M E OF AND ABOUT 0.1 M LOWER THAN THE EAST EDGE OF PAVEMENT OF THE I-91 SOUTHBOUND LANE, 11.1 M W OF AND ABOUT 0.4 M LOWER THAN THE WEST EDGE OF PAVEMENT OF THE I-91 NORTHBOUND LANE. 9.2 M S OF THE CENTERLINE OF THE U-TURN, 6.5 M NW OF THE CENTER OF A 60 CM SQUARE METAL DRAIN GRATE, AND 0.3 M N OF A FIBERGLASS WITNESS.

TRAVERSE TIES



ALIGNMENT TIES



DATUM
 VERTICAL NAVD88
 HORIZONTAL NAD83(2011)
 ADJUSTMENT COMPASS

PROJECT NAME: ROCKINGHAM
 PROJECT NUMBER: IM 091-1(71)
 FILE NAME: X13A366T1.DGN PLOT DATE: 29-JAN-2016
 PROJECT LEADER: B. MARTIN DRAWN BY: C. CYR
 DESIGNED BY: VTRANS CHECKED BY: P. BEYOR
 TIE SHEET SHEET 5 OF 35