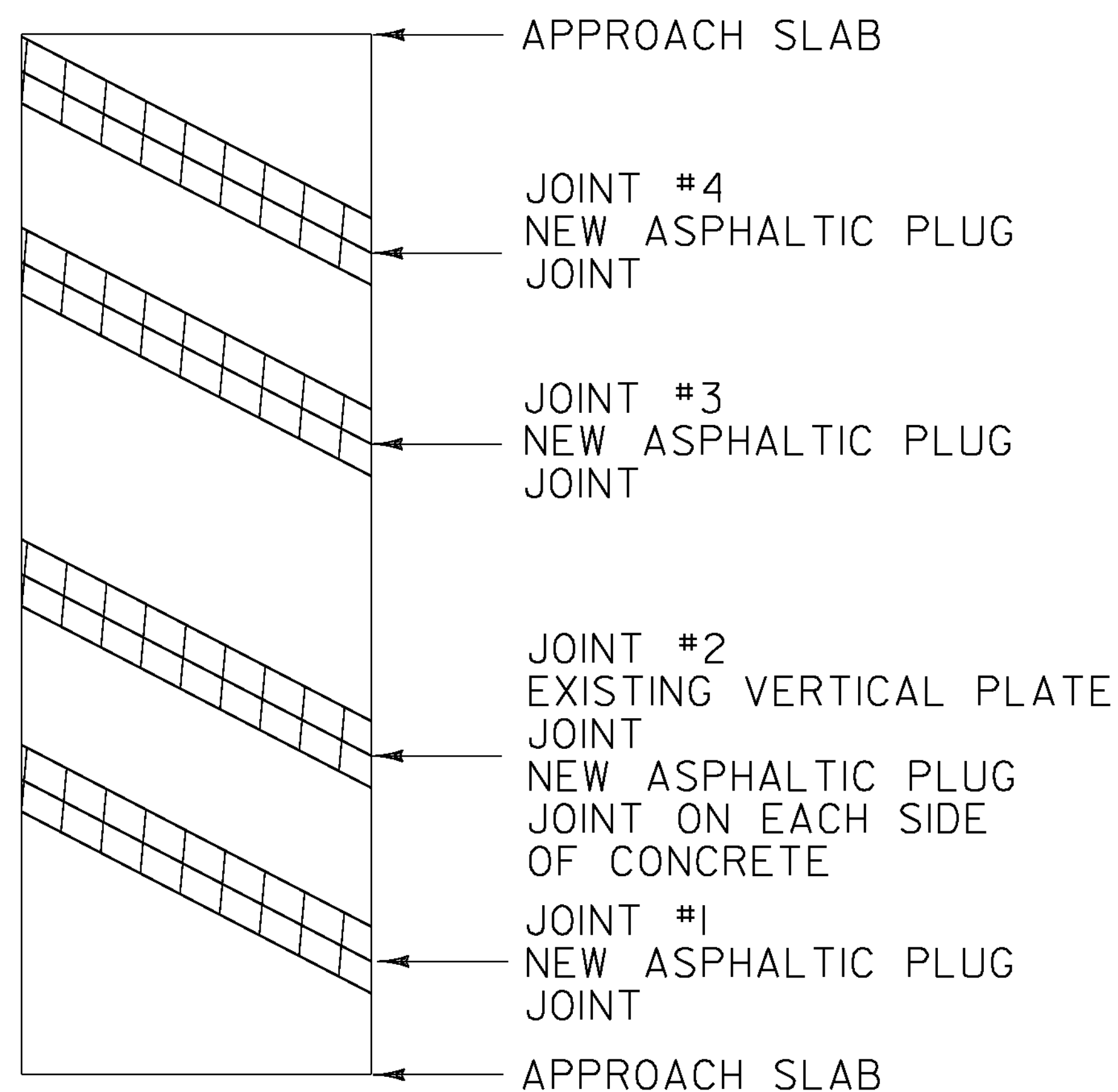


↑  
SOUTHBOUND  
DIRECTION OF TRAVEL



**BRIDGE 63S**

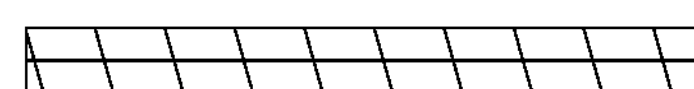
MM 103.504

LENGTH OF ASPHALTIC PLUG JOINTS:

JOINT #1 = 45'  
JOINT #2 = 45' X 2 = 90'  
JOINT #3 = 45'  
JOINT #4 = 45'

TOTAL = 225'

**LEGEND**



EXISTING BRIDGE JOINTS TO BE  
REPAIRED WITH ASPHALTIC PLUG JOINT

**BRIDGE  
DETAIL SHEET  
# 4**

PROJECT NAME: FAIRLEE - NEWBURY  
PROJECT NUMBER: IM SURF (40)

FILE NAME: I3a236\pl3a236.dgn  
PROJECT LEADER: M. FOWLER  
DESIGNED BY: LOCKE  
IPARM FILE NAME: pl3a236\_08.1

PLOT DATE: 20-FEB-2014  
DRAWN BY: LOCKE  
CHECKED BY: FOWLER  
SHEET 8 OF 27