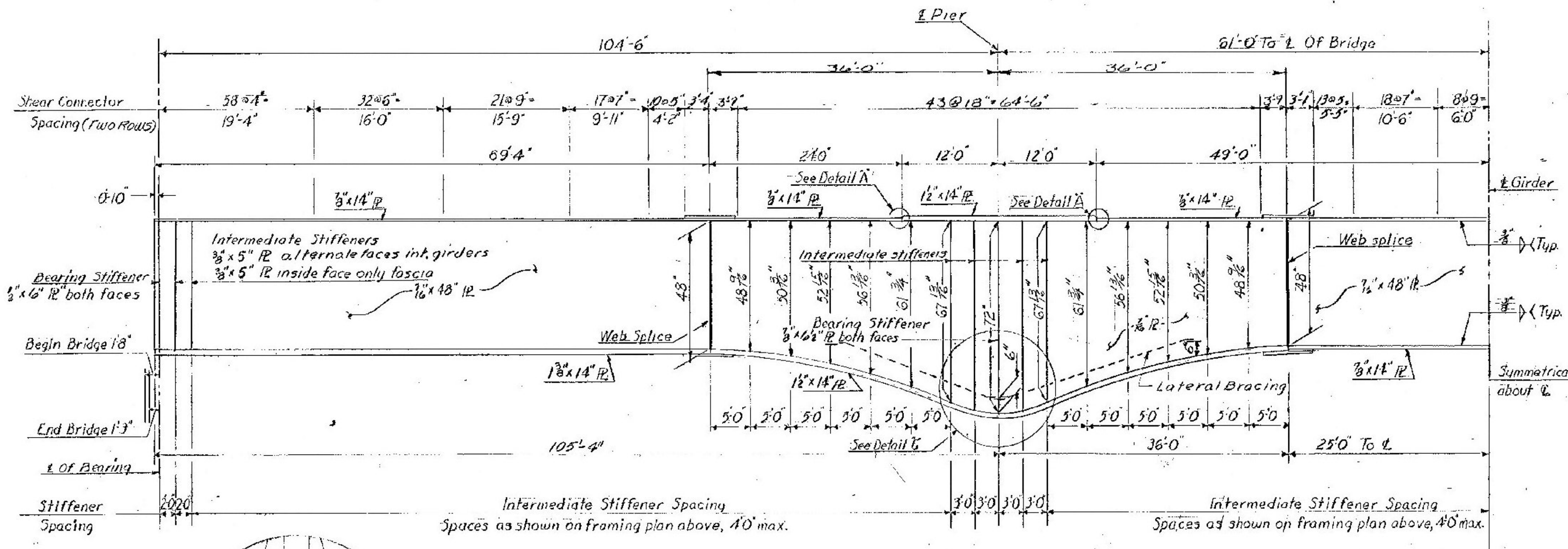
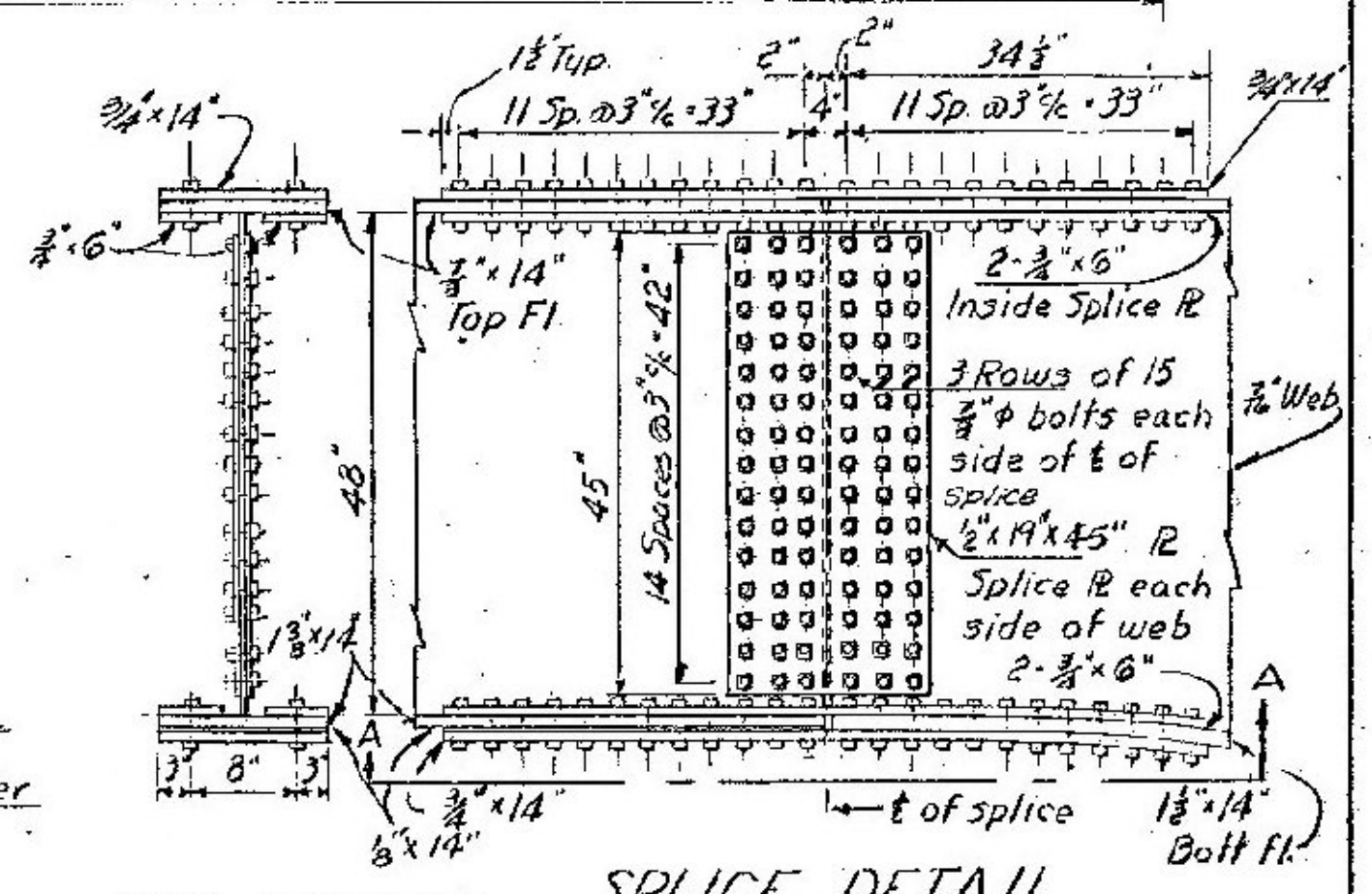


FRAMING PLAN N+S BOUND BRIDGES
Scale 1/8" = 1'-0"

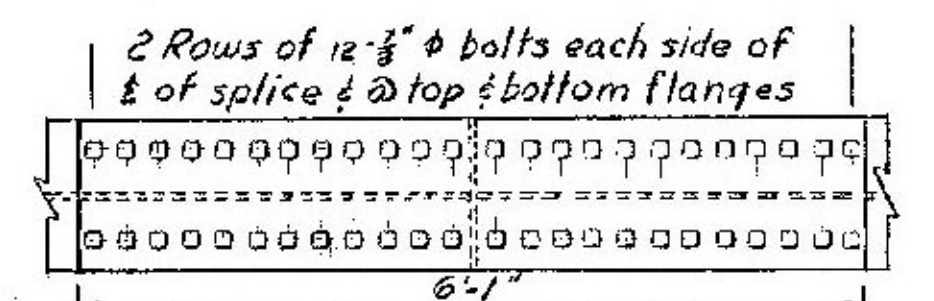


GIRDER DETAILS N+S BOUND BRIDGES
Scale Vert. 1/4" = 1'-0"
Horiz. 1/8" = 1'-0"

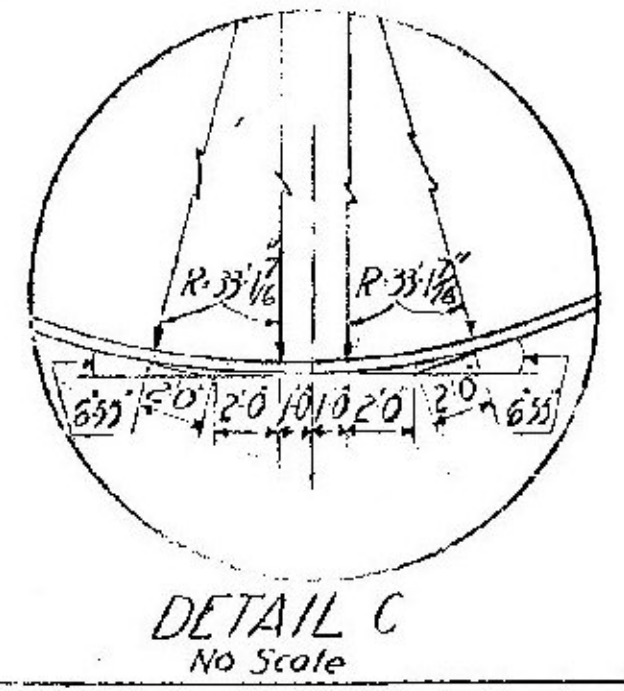


NOTE: Bolts are to be 5/8" High Strength ASTM A-325.

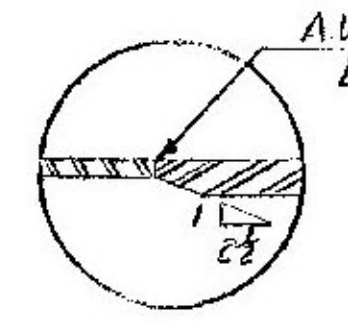
SPlice DETAIL
Scale 1/4" = 1'-0"



SPlice NOTE:
5/8" x 14" or 3/4" x 14" Filler Plate or Plates are to be provided at the bottom flange, with no filler plate needed at the top flange, for the interior splice. Other details are as shown above in the splice detail.



DETAIL C
No Scale



DETAIL A
No Scale

Girder bottom flanges were changed from 1 1/2" x 14" & 1 1/2" x 14" to 1 3/8" x 14" & 3/4" x 14". Intermediate stiffeners were changed to 3/8" x 5" from 1/2" x 5".
Vermont Highway Dept
JAE & JRB 12/11

NOTES

1. For general notes see Br.303
2. For joint details at abutments see Br.309
3. For bearing device details see Br.308
4. For stud shear connector details see Br.307
5. For beam haunch details see SCB-D2-71
6. For lateral bracing details see Br.308 (Details D, E & F)

BRADFORD - NEWBURY
IM BNPT (14)
PROJECT BRIDGE 67
SHEET 25 OF 26
FOR INFORMATION ONLY

VERMONT
STATE HIGHWAY DEPARTMENT
TOWN OF NEWBURY
INTERSTATE ROUTE 91
INTERSTATE 91 OVER
WELLS RIVER BR 67
SUPERSTRUCTURE DETAILS
MCFARLAND-JOHNSON
CONSULTING ENGINEERS
BINGHAMTON, NEW YORK
DESIGNED T.T.S. CHECKED H.G.G. DATE 7-24-67
DRAWN R.C. IN CHARGE H.G.G. SCALE as noted
PROJECT NO. 191-2(48) SH 118 OF 176
BRJ06