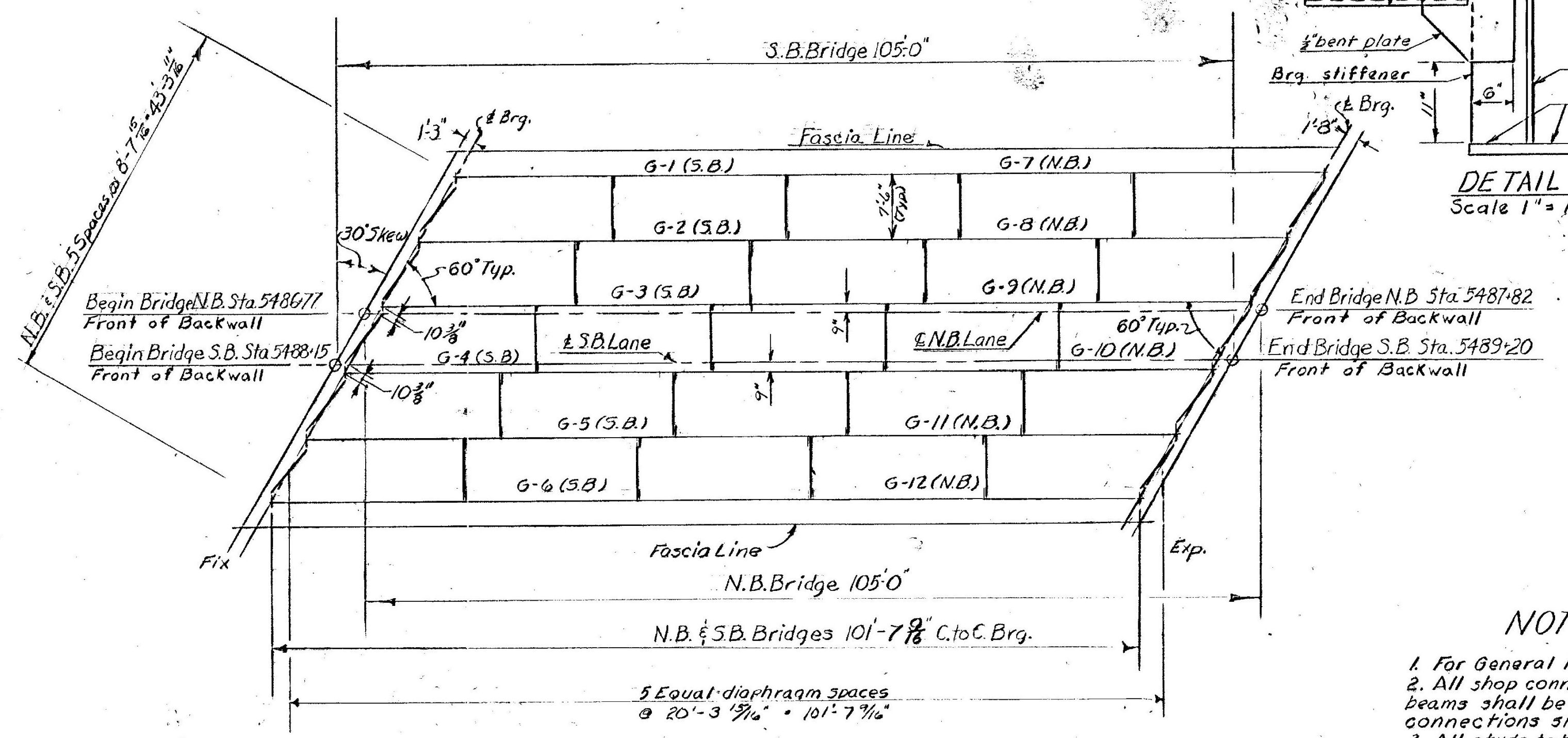
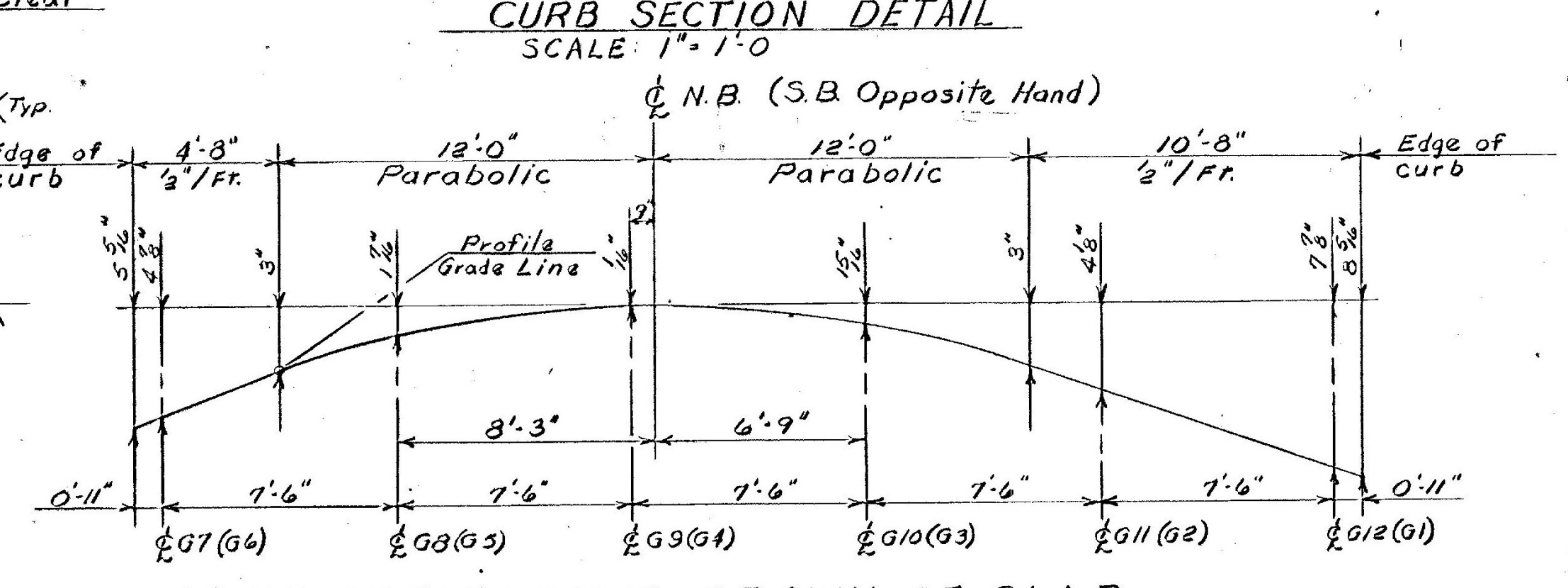
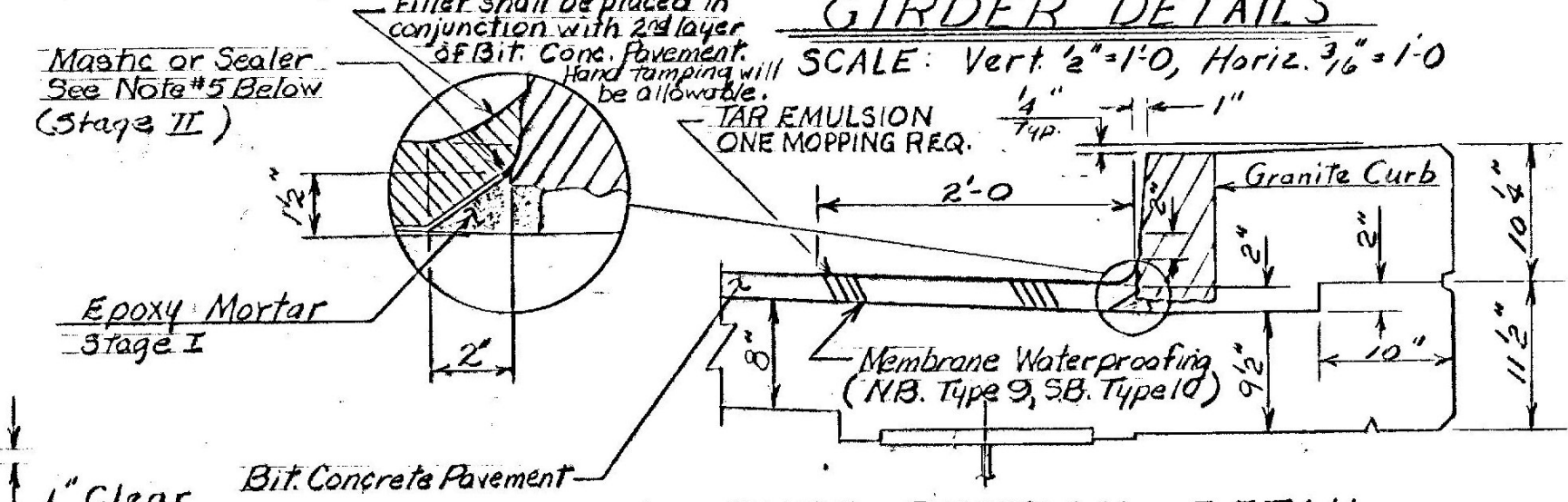
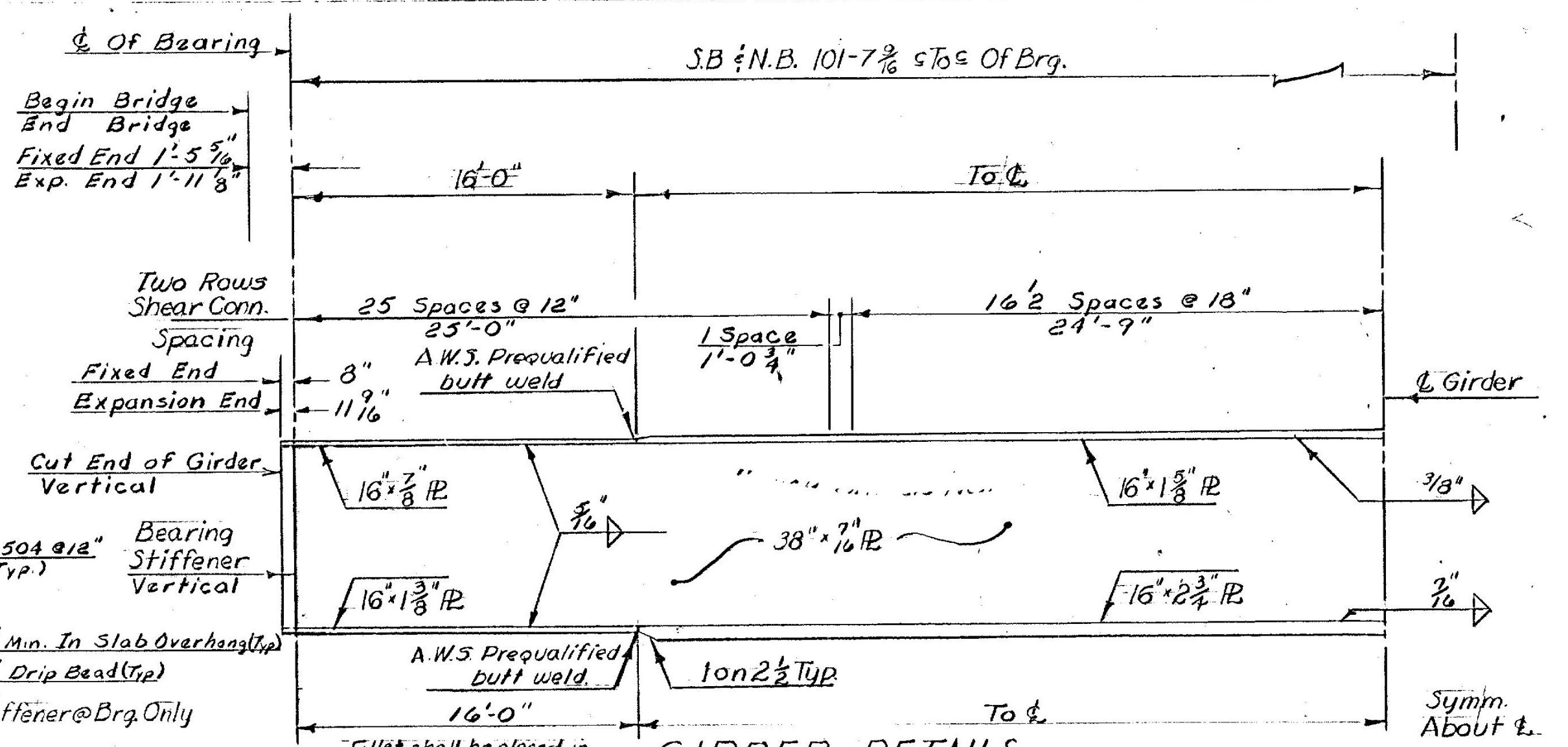


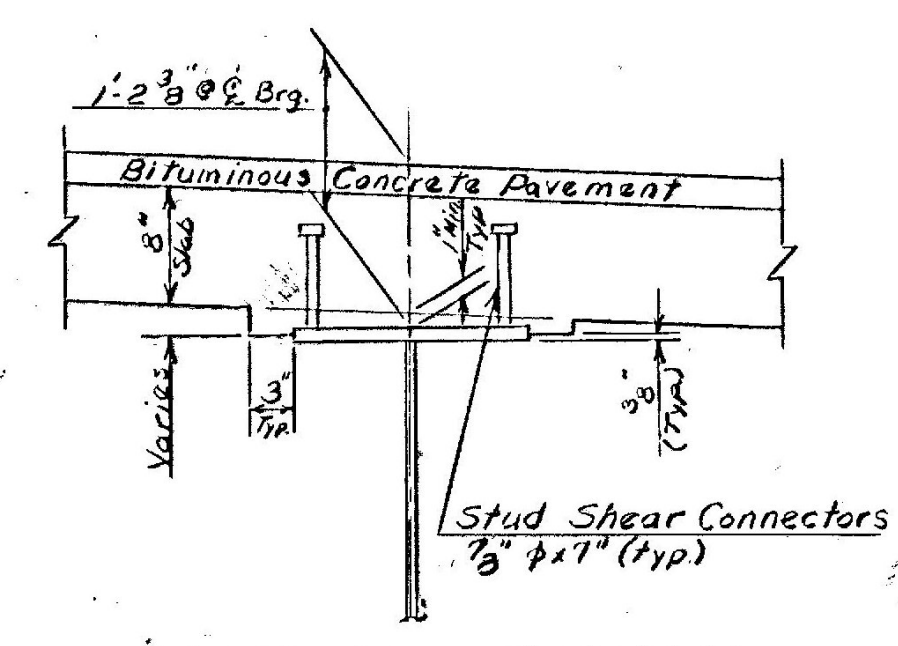
Note:
Bar marks are to be prefixed
1--- for S.B. Superstructure
and 2--- for N.B. Superstructure.

TYPICAL SECTION N.B.
Scale 3/8"=1'-0"
(S.B. Opposite Hand)



FRAMING PLAN
Scale 3/32"=1'-0"

- NOTES**
1. For General Notes see BR 301
 2. All shop connections for diaphragm beams shall be 3/8" fillet welds. All field connections shall be high strength bolts A325.
 3. All studs to be 3/8" x 7" welding studs.
 4. Concrete bridge deck slab shall be increased to 9 1/2" thickness at slab overhang.
 5. Seal with an Approved Mastic or Sealer which is compatible with the adjacent materials. Payment to be included in Bid Price for Membrane Waterproofing.



HAUNCH DETAIL
SCALE: 1"=1'-0"

REVISIONS	
1. Revised girder, slab, and reinforcing. Added details.	
2. Revised Membrane Waterproofing and curb Section Detail.	10-71 D. Lathrop D. Lathrop 6-73
VERMONT STATE HIGHWAY DEPARTMENT TOWNS OF BRADFORD-NEWBURY INTERSTATE ROUTE 91 INTERSTATE OVER STATE AID #1 SUPERSTRUCTURE DETAILS & FRAMING PLAN	
M ^c FARLAND - JOHNSON CONSULTING ENGINEERS BINGHAMTON, NEW YORK	
DESIGNED <i>NA</i>	CHECKED <i>AMC</i> DATE 12-12-66
DRAWN <i>RC</i>	IN CHARGE <i>HGC</i> SCALE <i>As shown</i>
PROJECT NO. 191-2(26) SH 113 OF 430.	
BR 305	

BRADFORD - NEWBURY
IM BPNT (14)
PROJECT BRIDGE 63
SHEET 24 OF 26
FOR INFORMATION ONLY