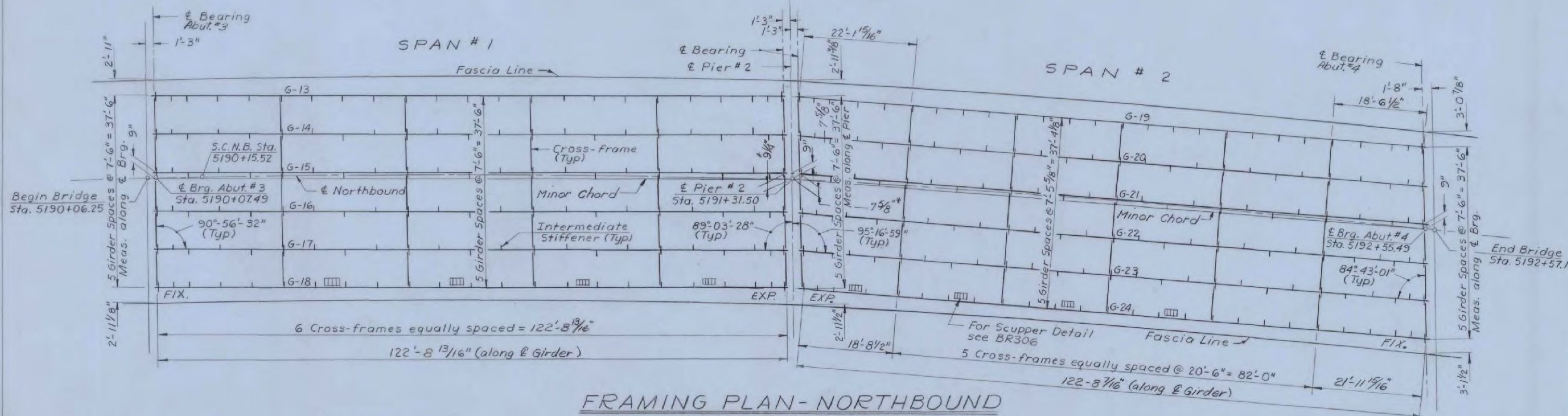


FRAMING PLAN - SOUTHBOUND

Scale: 3/32" = 1'-0"

* See Detail A on BR.317 & BR.318



FRAMING PLAN - NORTHBOUND

Scale: 3/32" = 1'-0"

NOTES

1. For General Notes, see BR303.
2. For Bearing Details, see BR308.
3. For Scupper Details, see BR306.
4. For Railing & Curb Plan, see BR308.
5. For Joint Detail at abutments and piers see BR309.
6. For Beam Haunch Details, see SCB-D2-71.
7. All shop connections for cross-frames shall be 5/16" fillet welds. All field connections shall be 7/8" φ high strength bolts.
8. For Scupper Spacing, see BR303.
9. If Deck Overhang Forms are Supported by Flanging Type Brackets, their Max. Spacing Shall be 4'-0".

Revisions

Lateral Bracing Rev. From L4"x4"x3/8" To WT5 x 14.5
R. Blodish 9/17/69

VERMONT STATE HIGHWAY DEPARTMENT
TOWN OF BRADFORD
INTERSTATE ROUTE 91
WAITS RIVER BR 59

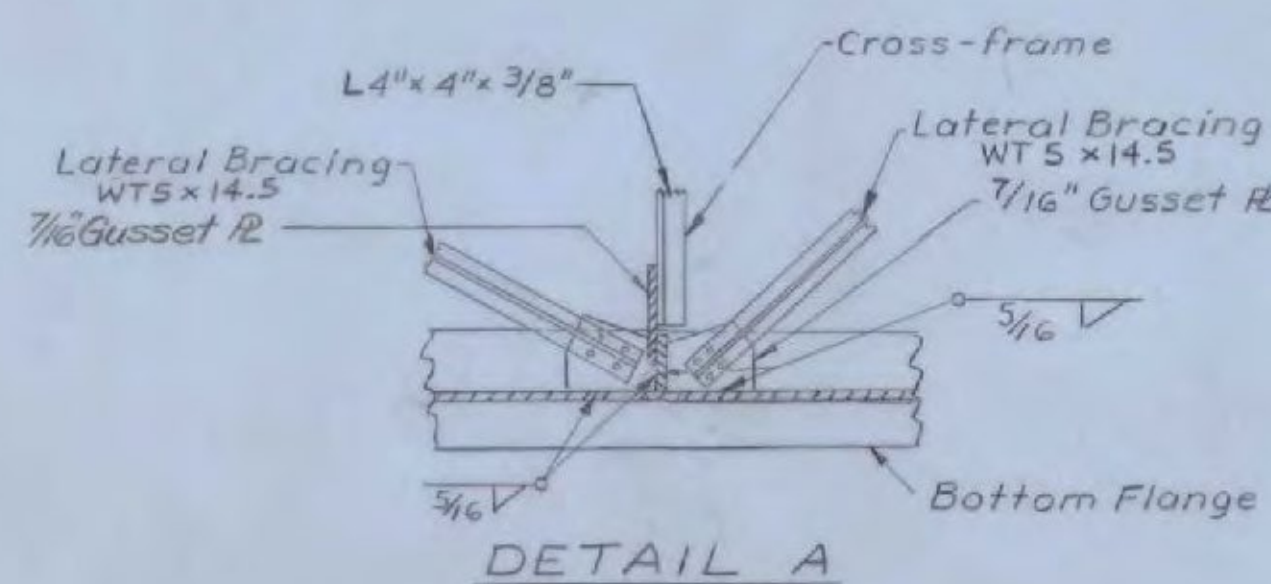
FRAMING PLAN

McFARLAND - JOHNSON
CONSULTING ENGINEERS
BINGHAMTON, NEW YORK

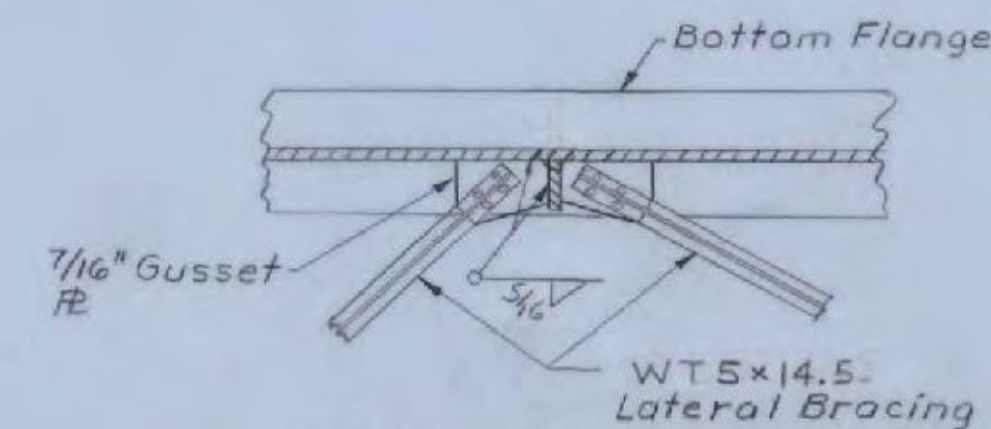
DESIGNED BRK CHECKED RFD DATE 7-24-67
DRAWN RMS IN CHARGE HGC SCALE AS SHOWN

PROJECT NO. I91-2(74) SH 66 OF 181

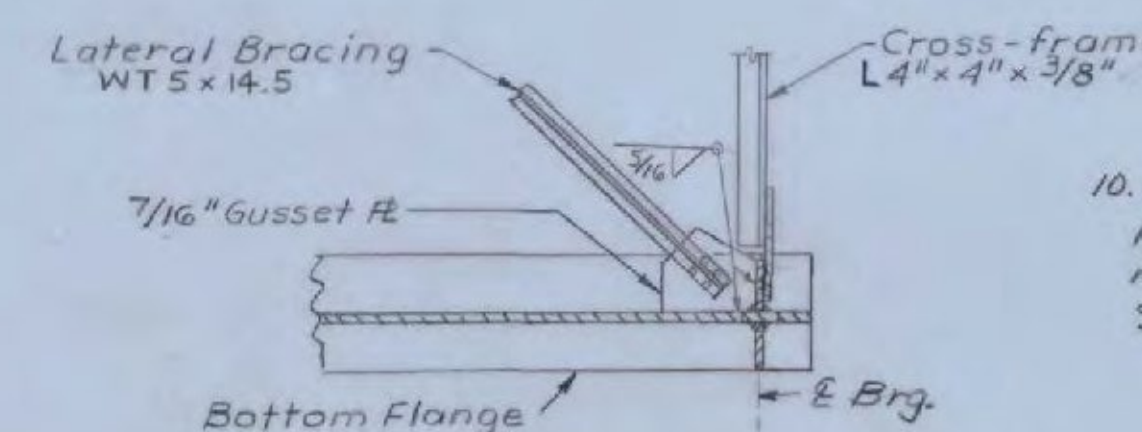
BR 307



DETAIL A



DETAIL B



DETAIL C

LATERAL BRACING DETAILS

No Scale

10. All Structural Steel shall be cleaned prior to shop painting using any method specified in Section 513.03, Surface Preparation.

BRADFORD - NEWBURY
IM BPNT (14)
PROJECT BRIDGE 59
SHEET 18 OF 26
FOR INFORMATION ONLY