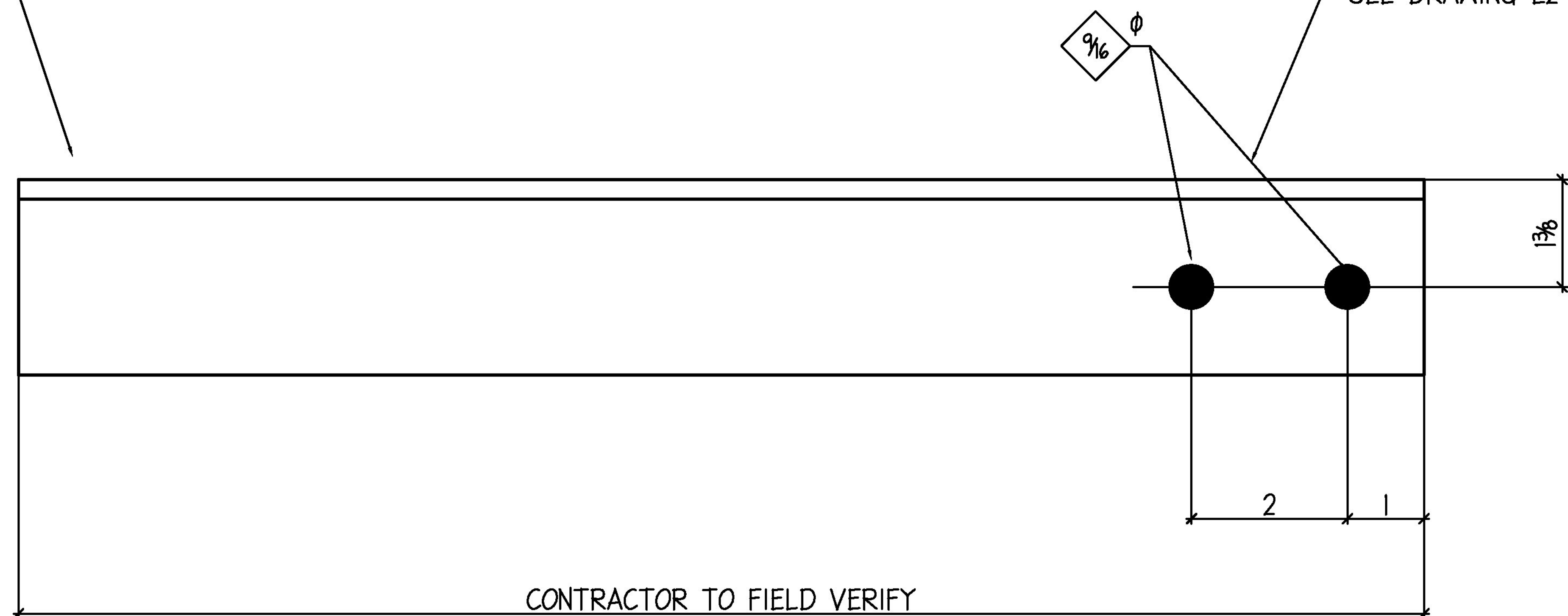


FIELD WELD TO SCUPPER
SEE DRAWING E2 FOR DETAIL

FIELD DRILL EXISTING STIFFENERS
SEE DRAWING E2 FOR DETAIL

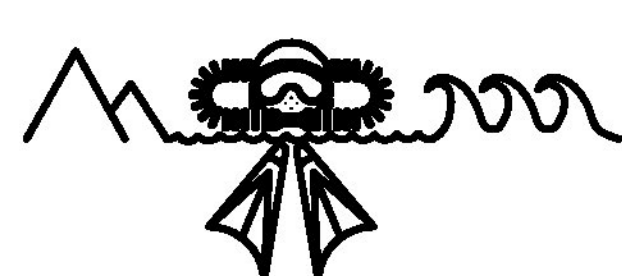


SAND BLASTED AND
PAINTED IN THE FIELD BY
MONOKO, LLC

42 ~ ANGLES ~ 10A1
REF: E2

NOTE: FIELD VERIFY FIELD BOLT LENGTH

BRIDGE 44 NORTH & SOUTH

△	8/9/17	Per Approval
△	3/3/17	Per Check'g
NO.	DATE	REVISION
Saw:	INITIAL DATE	Drill: INITIAL DATE
Weld:	INITIAL DATE	Prep: INITIAL DATE
		Fitter: INITIAL DATE
		GCI: INITIAL DATE
		Load: INITIAL DATE
 RELIANCE STEEL 94 SOUTH OAK CIRCLE, COLCHESTER, VT 05446 TEL 802-655-4810 FAX 802-655-9352 www.reliancesteelvt.com		
CUSTOMER Monoko		
PROJECT Bridge Downspouts & Components		
DETAIL Angle Supports @ Scupper Repairs & Replacements		
DRAWN/CHECKED	DATE	JOB NO.
RCL/DAG	FEB 2017	7324
		DWG NO.
		10
		REV
		△

SHIP QTY	ASSEMBLY QTY	SECTION	FT	INCH	ASSEMBLY MARK	SHIP MARK	REMARKS	WEIGHT
42		L2½x2½x5/16	?	?		10A1		
84		HS ½Ø	0	1¾		10FBI	A325 FIELD BOLT W/Nut & Lock Washer	

SURFACE PREP: SSPC-SP2 FINISH: MILL PRIMER: N/A DFT: 1.0 HOLES: 1/16Ø UNO

SHOP BOLTS: A325-TC
 MATL: W's - A992-50
 HSS - A500 Grd B
 Pipe - A53 Grd B
 Bars & P & L - A36
 ELECTRODES: E70XX/E71-T
 E DWG REF: E2
 ENGR DWG REF:
 SEQ / DIV:
 GRID LOCATION:
 TOS ELEVATION:
 NOTES: