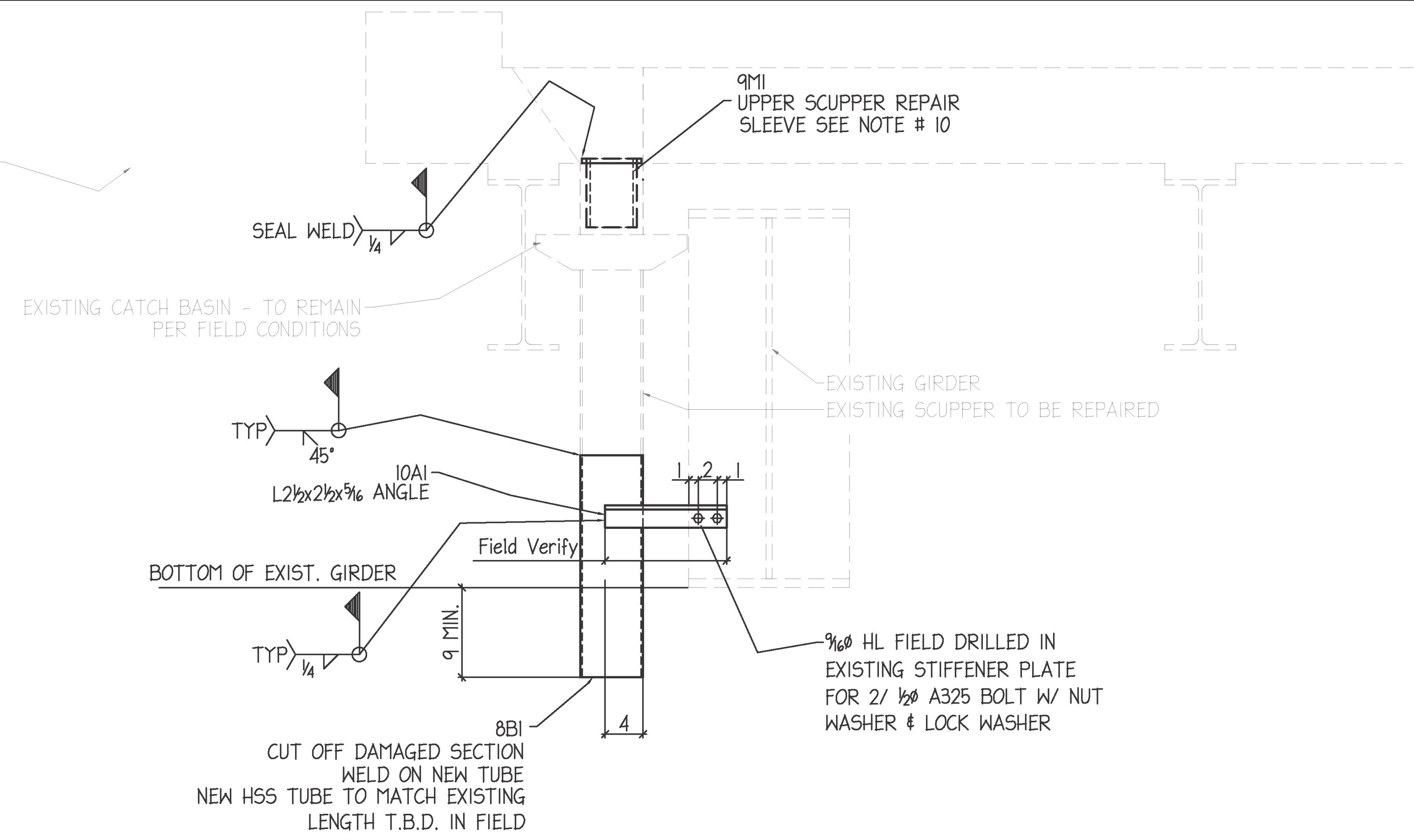


Notes:

- 1.) All the deteriorated scuppers with significant loss of section shall be cut off above the deteriorated area. If the deterioration extends to the underside of the deck, the scupper shall be cut off and replaced. The engineer shall approve the extent of the repair for each deteriorated scupper identified by the contractor prior to being repaired or replaced.
- 2.) All existing dimensions and scupper sizes shall be field verified.
- 3.) Bolt holes shall be field drilled and shall have a minimum edge distance of 1½ except where noted otherwise.
- 4.) All new steel shall be zinc primed and painted with NEP coat system.
- 5.) All welding shall conform with the provisions of subsection 506.10.
- 6.) Hollow structural steel tubing shall conform to ASTM A-500 GRADE C.
- 7.) Steel plates and angles shall conform to AASHTO M270, GRADE 50 (ASTM A709, GRADE 50).
- 8.) High strength bolts, nuts and circular washers shall conform to subsection 714.05 of the 2011 standard specifications.
- 9.) NEP coat system & touch-up is by G.C. (Monoko). All paint system specs & application info will be provided by Monoko.
- 10.) The upper 4 x 4 tube is a sleeve that was designed by VTrans to fit inside the existing upper scupper. After accessing the upper scupper from below. Field verification were made. There is a concrete haunch where the upper scupper rest inside of. Also some of the upper scuppers come in contact with the small stringer beam next to it. VTrans designed an inner sleeve (4x4 tube) to be placed inside the upper scupper from the top. The upper scupper is going to be sandblasted from the top of the deck and bottom. After primed, the new sleeve will be inserted and welded from the top for 100 % seal. The welds will be cleaned and painted from final touch up.

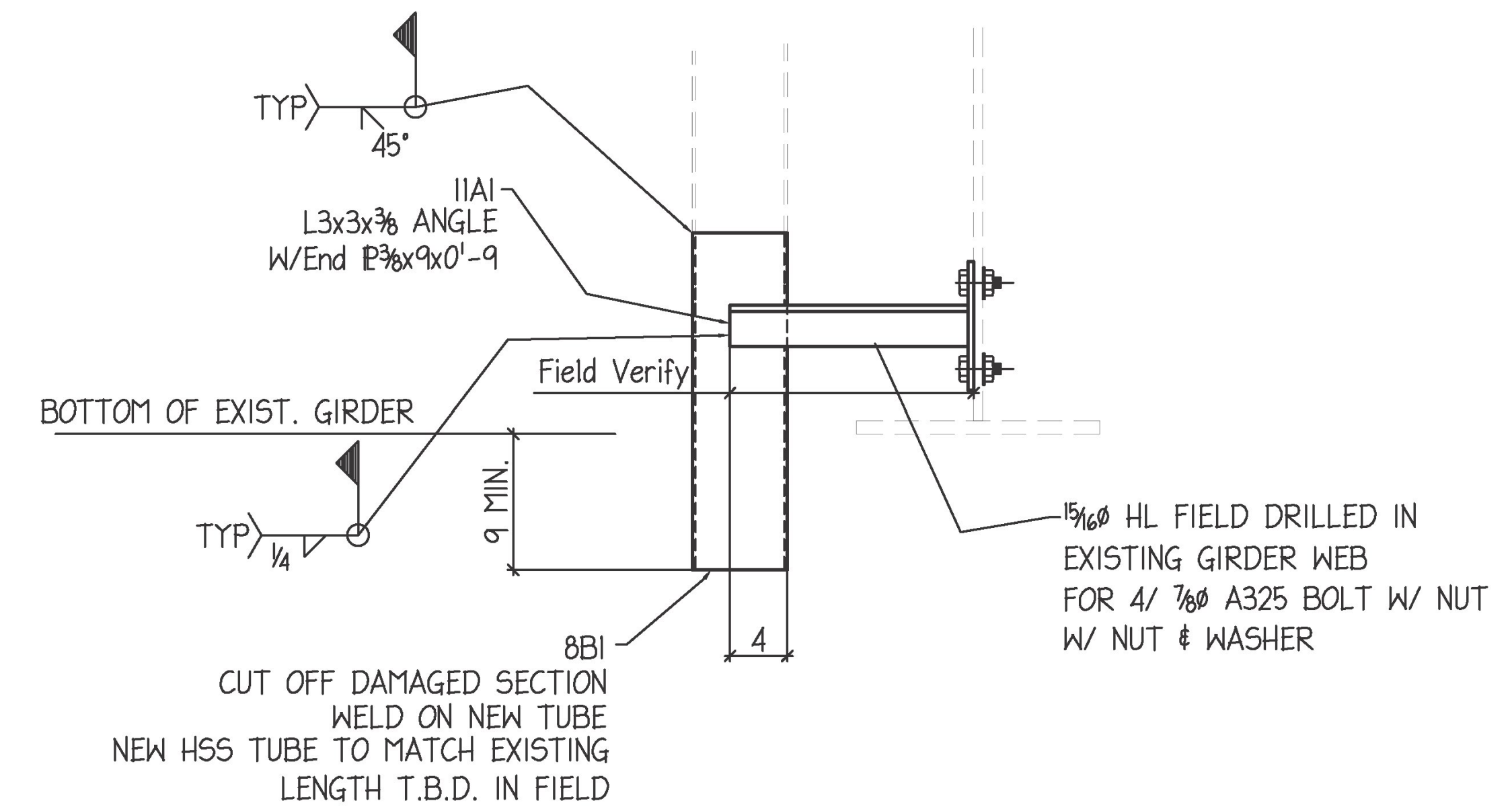
ALL MATERIAL PAINTED W/ NEP COAT SYSTEM, TO BE TOUCHED UP AFTER FIELD WELDING. PAINT & PAINTING BY G.C. (MONOKO)

EXISTING STEEL ABOVE



TYPICAL SCUPPER REPAIR DETAIL

(42) LOCATIONS



ALTERNATE SCUPPER REPAIR DETAIL

(TBD) LOCATIONS

PROJECT LOCATION: WINDSOR-HARTFORD, VT IM BPNT (13)
BRIDGE 44 NORTH & SOUTH

▲	8/10/17	Per App'l
▲	6/26/17	Per App'l
▲	3/3/17	Per Check'g
NO.	DATE	REVISION

RELIANCE STEEL

94 SOUTH OAK CIRCLE, COLCHESTER, VT 05446
TEL 802-655-4810 FAX 802-655-9352
www.reliancesteelofvt.com

CUSTOMER Monoko				
PROJECT Scupper Repair & Replacement Components				
DETAIL Scupper Repair & Replacement Component Details				
DRAWN/CHECKED	DATE	JOB NO.	DWG NO.	REV
RCL	FEB2017	7324	E2	▲