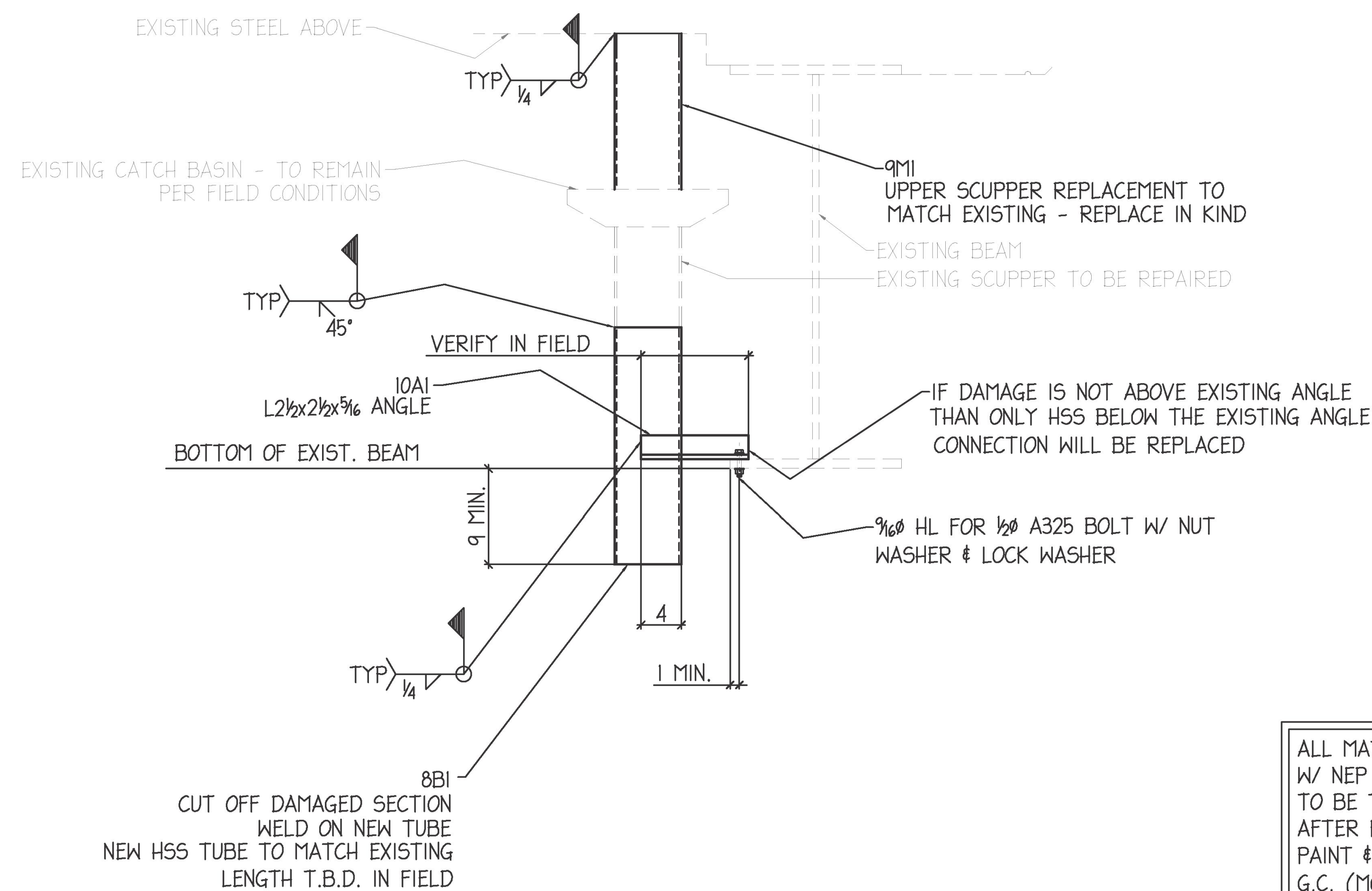


Notes:

- 1.) All the deteriorated scuppers with significant loss of section shall be cut off above the deteriorated area. If the deterioration extends to the underside of the deck, the scupper shall be cut off and replaced. The engineer shall approve the extent of the repair for each deteriorated scupper identified by the contractor prior to being repaired or replaced.
- 2.) All existing dimensions and scupper sizes shall be field verified.
- 3.) Bolt holes shall be field drilled and shall have a minimum edge distance of 1½ except where noted otherwise.
- 4.) All new steel shall be zinc primed and painted with NEP coat system.
- 5.) All welding shall conform with the provisions of subsection 506.10.
- 6.) Hollow structural steel tubing shall conform to ASTM A-500 GRADE C.
- 7.) Steel plates and angles shall conform to AASHTO M270, GRADE 50 (ASTM A709, GRADE 50).
- 8.) High strength bolts, nuts and circular washers shall conform to subsection 714.05 of the 2011 standard specifications.
- 9.) NEP coat system & touch-up is by G.C. (Monoko). All paint system specs & application info will be provided by Monoko.


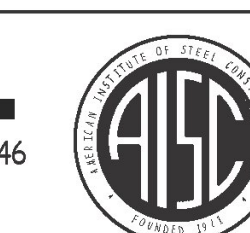


ALL MATERIAL PAINTED W/ NEP COAT SYSTEM, TO BE TOUCHED UP AFTER FIELD WELDING. PAINT & PAINTING BY G.C. (MONOKO)

**SUPPER REPAIR DETAIL**

(42) LOCATIONS

PROJECT LOCATION: WINDSOR-HARTFORD, VT IM BPNT (13)  
BRIDGE 44 NORTH & SOUTH

▲	6/26/17	Per App'l			
▲	3/3/17	Per Check'g			
NO.	DATE	REVISION			
		<b>RELIANCE STEEL</b> 94 SOUTH OAK CIRCLE, COLCHESTER, VT 05446 TEL 802-655-4810 FAX 802-655-9352 www.reliancesteelofvt.com			
CUSTOMER Monoko					
PROJECT Scupper Repair & Replacement Components					
DETAIL Scupper Repair & Replacement Component Details					
DRAWN/CHECKED	DATE	JOB NO.	DWG NO.	REV	
RCL	FEB2017	7324	E2	▲	