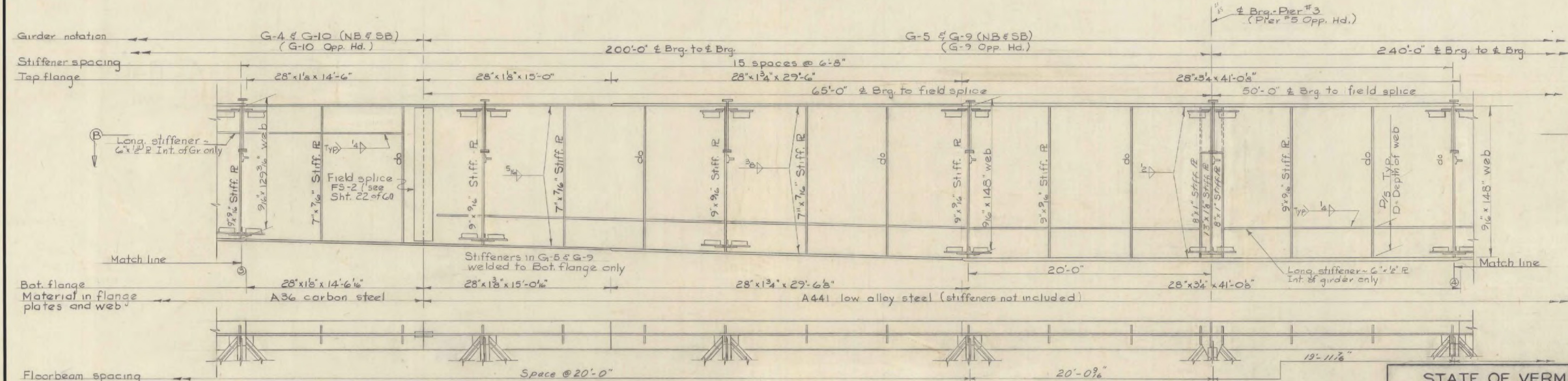
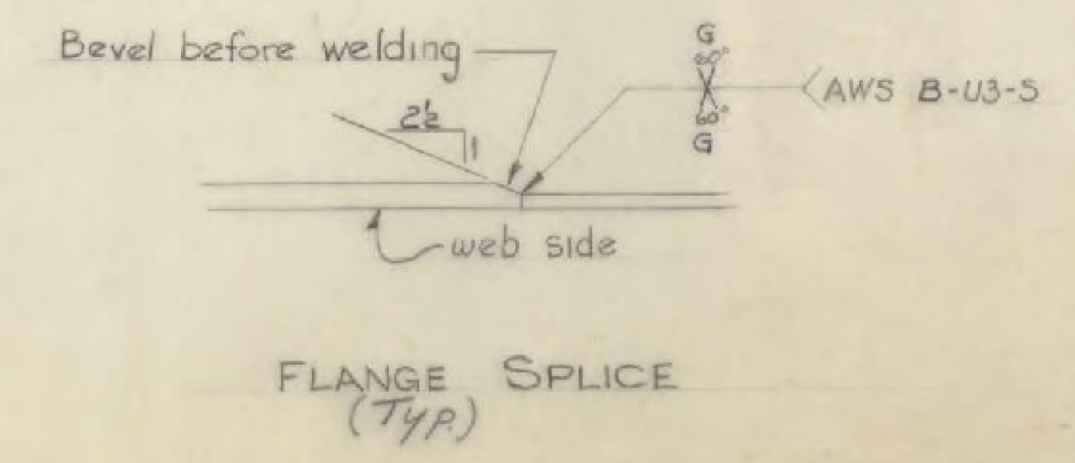


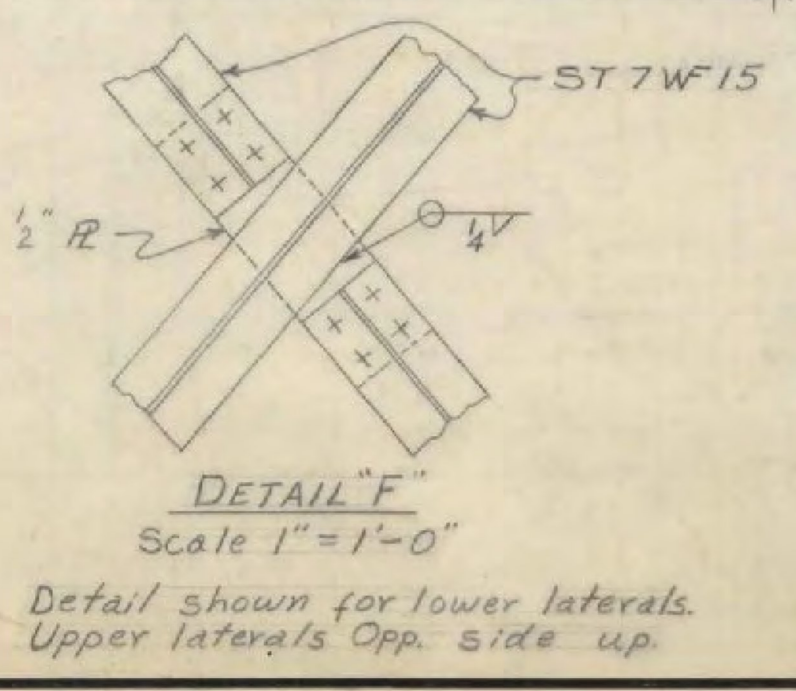
SECTION A-A



SECTION B-B



Web splices to be located by the Contractor. Splices shall be butt welds extending full height of web.



STATE OF VERMONT  
DEPARTMENT OF HIGHWAYS

TOWN OF HARTFORD  
ROUTE NO. I-91  
GIRDER DETAILS - NB & SB  
INT 91 OVER WHITE RIVER  
SCALE 1/4" = 1'-0"

SURVEYED BY \_\_\_\_\_  
DRAWN BY NBT CHECKED BY RLM 11-5-63  
PROJECT NO. I-91-2(3)  
SHEET 20 OF 60

WINDSOR - HARTFORD  
IM BPNT (13)  
PROJECT BRIDGE 44  
SHEET 32 OF 36  
FOR INFORMATION ONLY