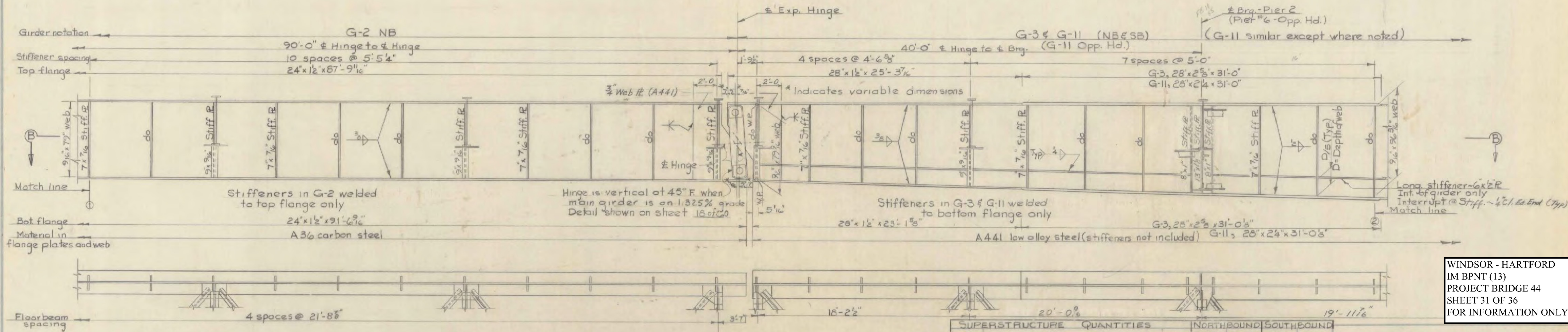
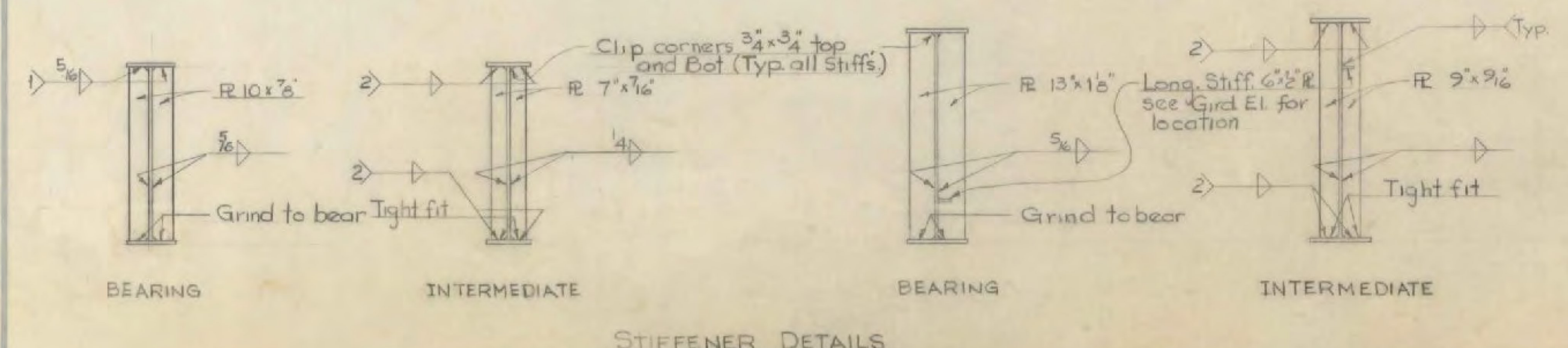


SECTION AA



SECTION B-B



STIFFENER DETAILS

WELDING NOTES (Stiffeners)
 1. Weld to top flange at abutment only
 2. Weld to top or bottom flange as indicated on Girder Elevation, opposite end to have tight fit (AASHTO 2.10.32)
 3. Where size of fillet weld is not shown use minimum size allowed by AWS Spec. D 2.0-63 para 217(b).
 4. Full penetration groove welds may be substituted for grinding of bearing stiffeners.
*** Stage II Construction**

SUPERSTRUCTURE QUANTITIES		NORTHBOUND		SOUTHBOUND		
ITEM NO.	ITEM	UNIT	TOTAL	FINAL	TOTAL	FINAL
106-A	CHAN. EXCAV. OF EARTH	C.Y.				
106-B	CHAN. EXCAV. OF ROCK	C.Y.				
106-C	UNCLASS. CHAN. EXCAV.	C.Y.				
107	STRUCT. EXCAV.	C.Y.				
401-AA	CONC. CLASS AA	C.Y.	1260	1,284	1240	1,257
402	REINF. STEEL	LEBS	283,000	307,568	278,200	295,191
407	ASPHALTIC-ASE. COATING	S.Y.				
408	Rebaring Admixture for Concrete	CY.	1260	227	1240	206
440	Water Repellent	Gal.	142	70	140	66
515	TAR EMULSION FOR BRIDGE FLOORS	GAL.	1584	*	1557	*
361B	BITUMINOUS CONCRETE PAVEMENT (DENSE GRADED TOP AND BOTTOM COURSE)	TON	340	*	330	*
372C	Joint Sealer-Performed (Type 'A')	L.F.	369	448	369	448
404A	STRUCTURAL STEEL	LBS	2412,720	2,501,913	2,461,720	2,460,440
550C	GRANITE BRIDGE CURB	L.F.	2378	2,479	2338	2,434
572	BRIDGE RAILING	L.F.	2447	2,487	2403	2,447

WINDSOR - HARTFORD
 IM BPNT (13)
 PROJECT BRIDGE 44
 SHEET 31 OF 36
 FOR INFORMATION ONLY

STATE OF VERMONT
 DEPARTMENT OF HIGHWAYS
 TOWN OF HARTFORD
 ROUTE NO. I-91 LOG STA.
 GIRDER DETAILS - NB & SB
 INT. 91 OVER WHITE RIVER
 SCALE 1/4" = 1'-0"
 SURVEYED BY _____
 DRAWN BY NBT CHECKED BY FLM 4-5-63
 PROJECT NO. I-91-2(3)
 SHEET 19 OF 60