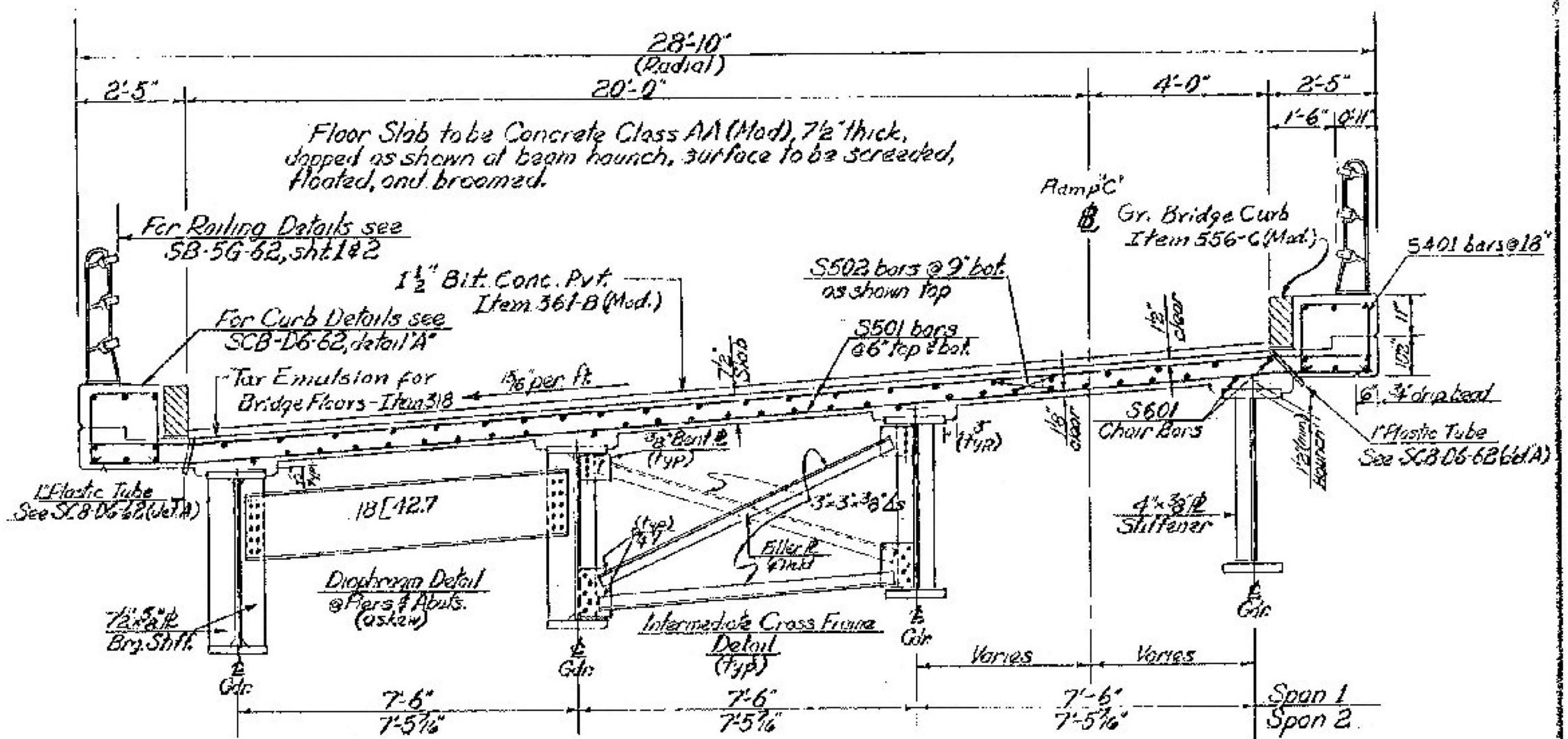
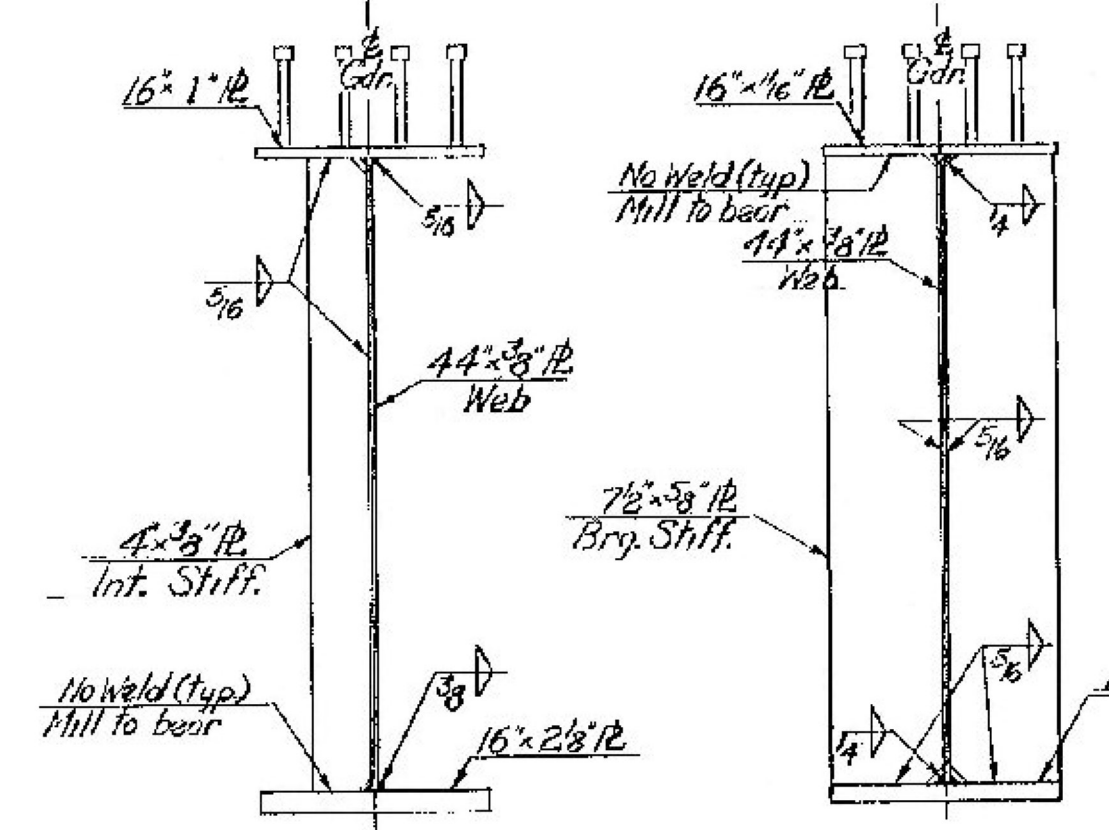
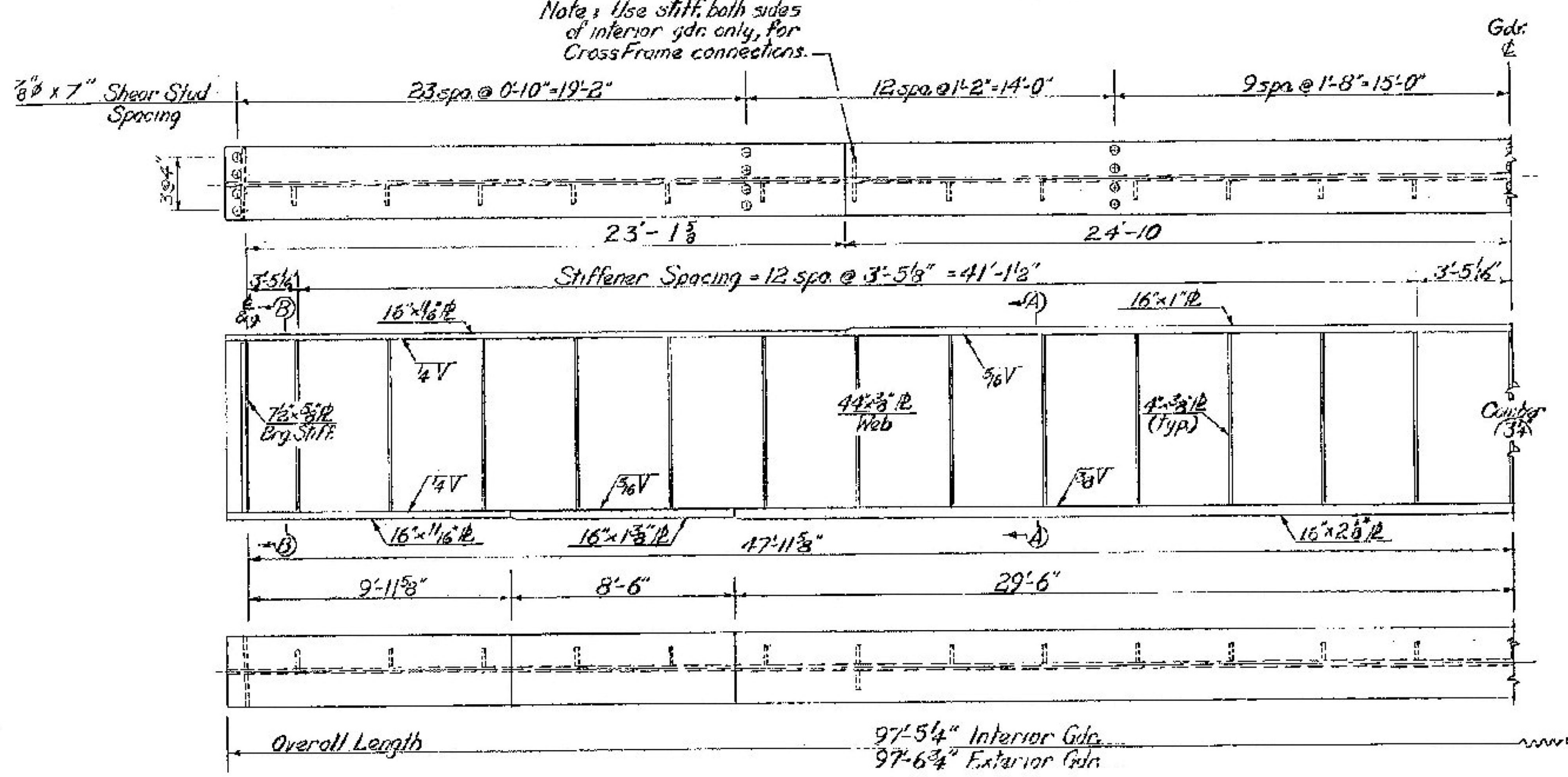


FRAMING PLAN
Scale 3/32"=1'-0"



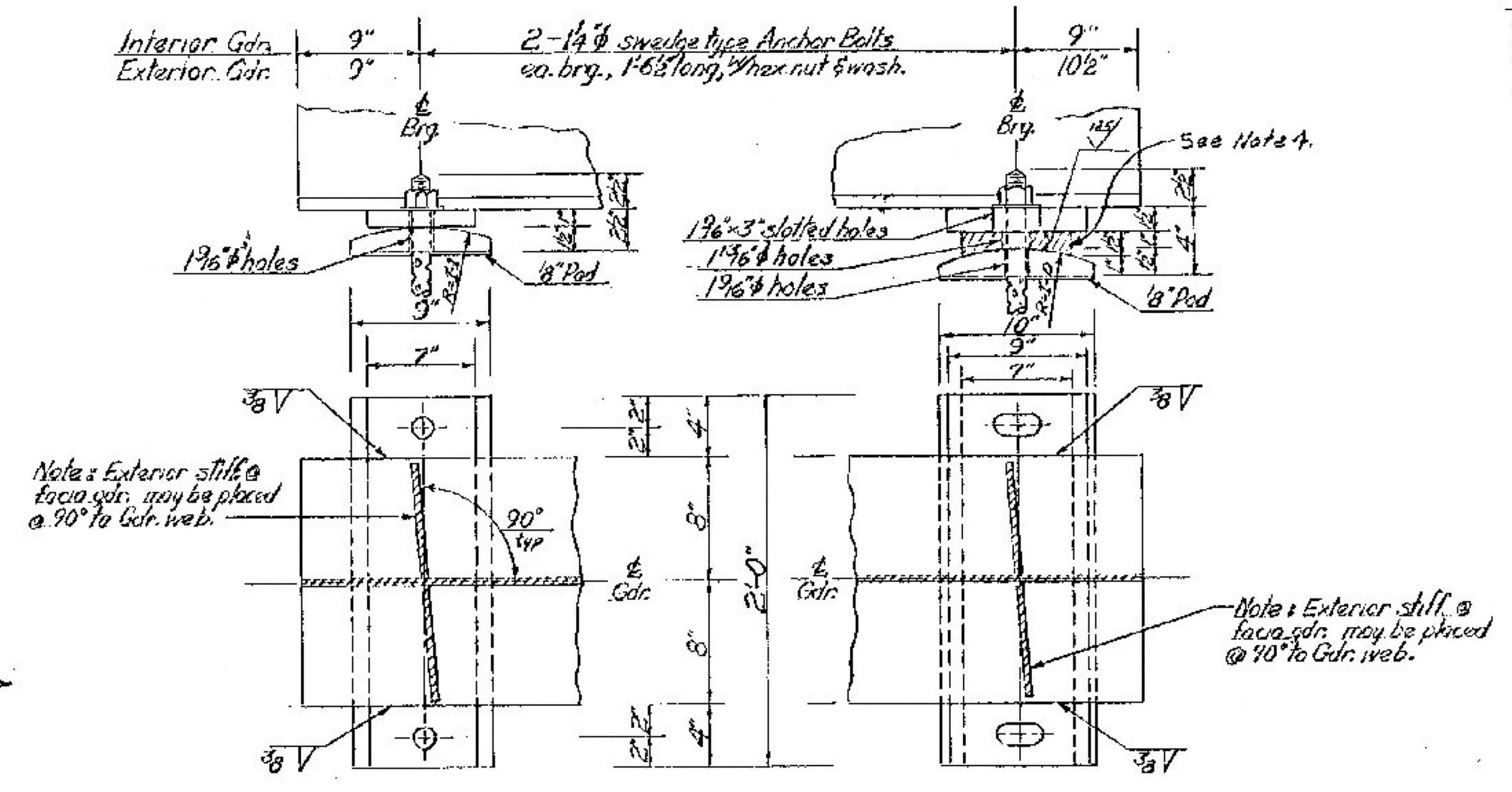
TYPICAL SECTION
Scale 3/8"=1'-0"



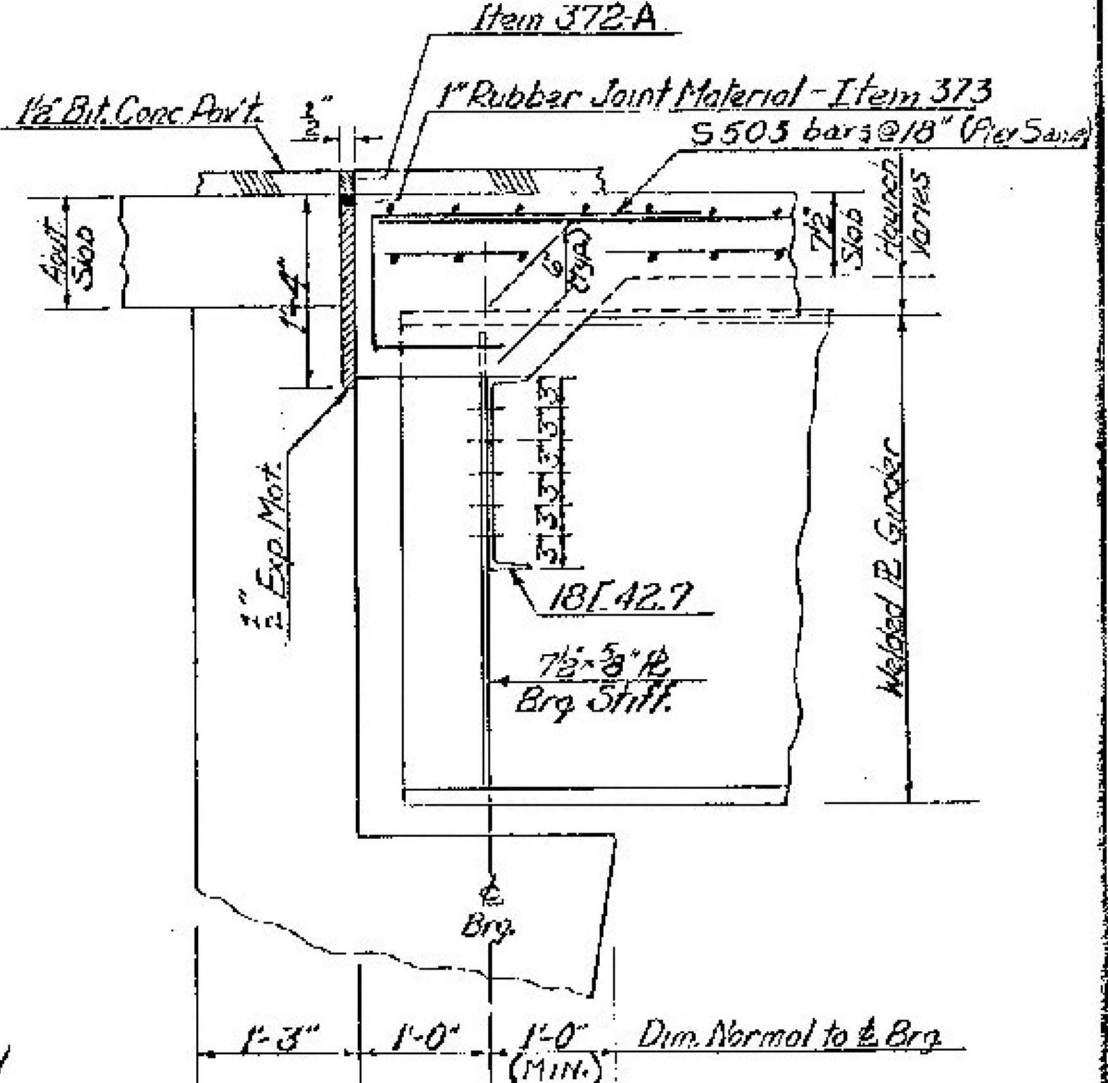
GIRDER DETAILS
Not to Scale

SECTION A-A
Scale 1/4"=1'-0"

SECTION B-B
Scale 1/4"=1'-0"



FIXED BEARING DEVICE DETAILS
Scale 1/2"=1'-0"



SECTION AT ABUTMENTS
Scale 3/4"=1'-0"

- NOTES**
- Items indicated on this sheet are included in the superstructure quantities.
 - Spiral Reinforcement - Item #03. Channels, spiral reinforcing or other mechanical shear connector devices may be substituted for the indicated welded studs, upon the approval of the Engineer.
 - Camber indicated is the ordinate at midpoint of beam.
 - The 1 1/2" x 7 1/2" x 0.125" in the Expansion Bearing shall be Cast Bronze conforming to ASTM B22-40T, class B. This plate shall have prepanned recesses, comprising not less than 25% of the bearing area, filled with a lubricating compound. The coefficient of friction shall be less than 0.10. It is not specified in A36 steel.
 - Shop splices in the web and flanges shall be A.W.S. prequalified full penetration type and shall be fully detailed on the shop drawings.

WINDSOR - HARTFORD
IM BPNT (13)
PROJECT BRIDGE 41C
SHEET 23 OF 36
FOR INFORMATION ONLY

STATE OF VERMONT
DEPARTMENT OF HIGHWAYS

TOWN OF **HARTFORD**
ROUTE NO. I-92 STA. 27+02.80
FRAMING PLAN-TYPICAL SECTION
Ramp "C" over Interstate I-89
SCALE as noted

SURVEYED BY
DRAWN BY **RND** CHECKED BY **DHR/GRM**
PROJECT NO. I-91-1(25) (2.1)
SHEET 23 OF 36