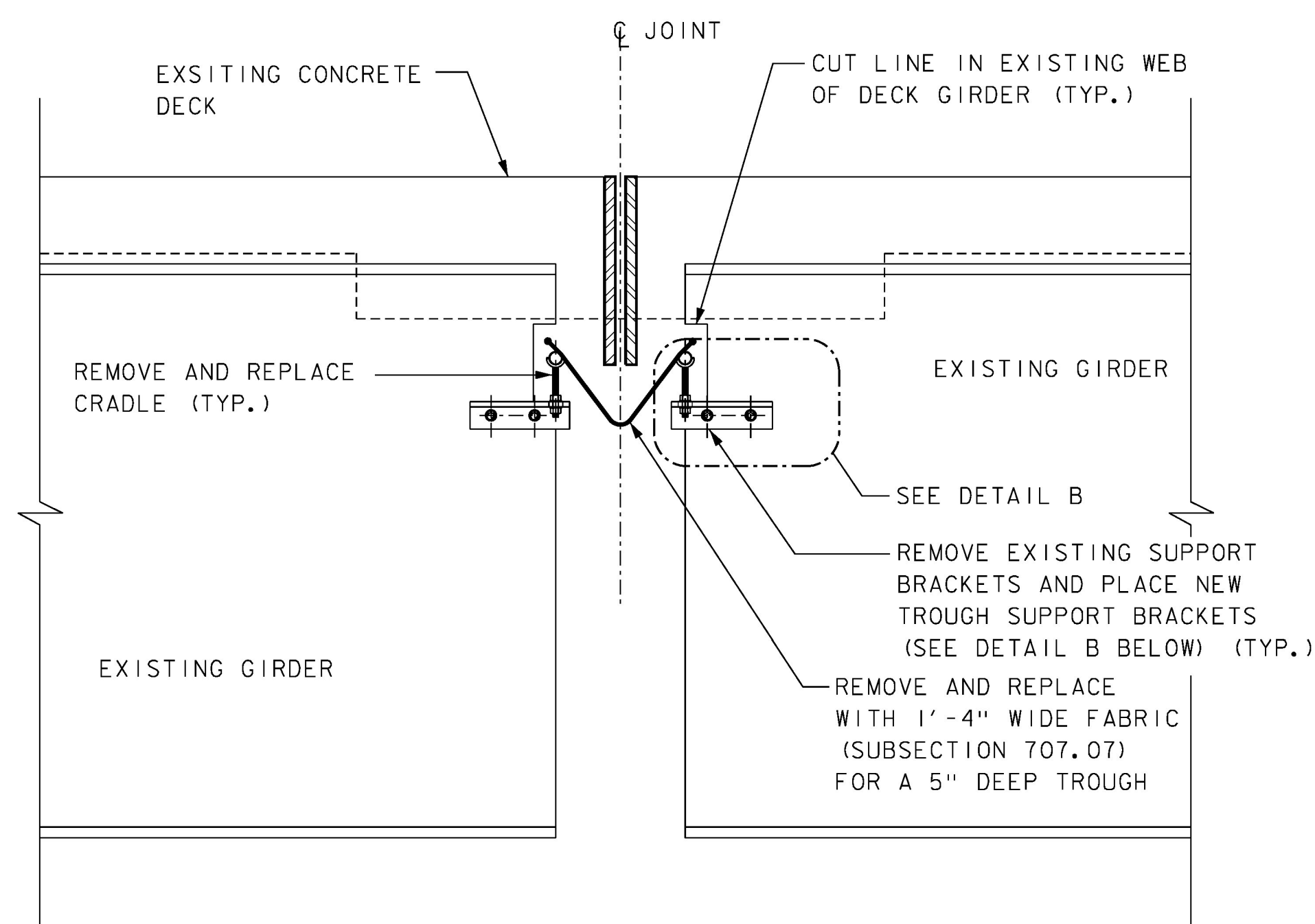


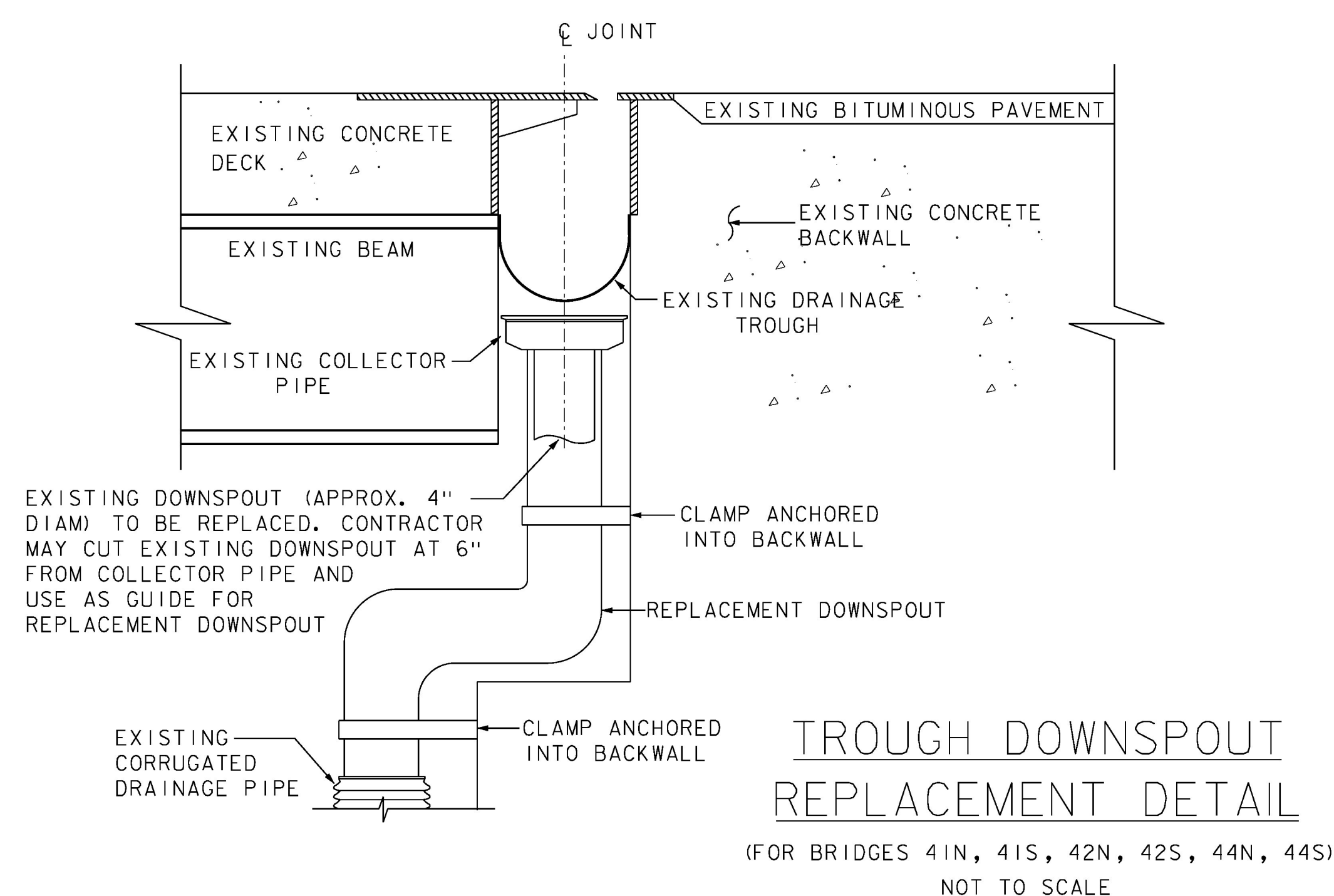
**DRAIN TUBE EXTENSION DETAIL**  
NOT TO SCALE

**DRAINAGE TUBE EXTENSION NOTE:**

1. IF EXISTING DRAIN TUBE IS TOO SHORT TO PROVIDE ADEQUATE CONNECTION, THE CONTRACTOR SHALL COMPLETELY FILL THE TUBE WITH POLYURETHANE SEALANT CONFORMING TO SUBSECTION 707.05. TUBES TO BE FILLED WITH POLYURETHANE SEALANT SHALL BE APPROVED BY THE ENGINEER PRIOR TO BEING FILLED.



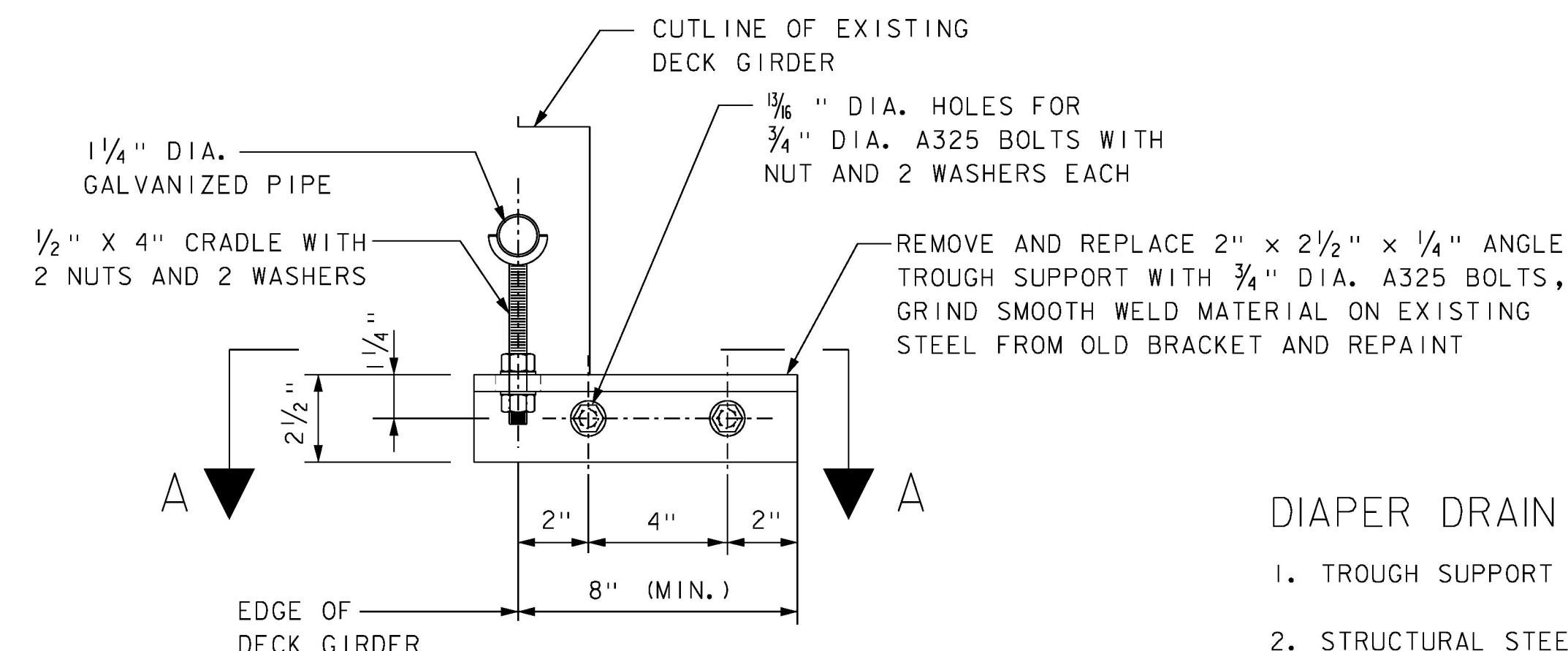
**TYPICAL SECTION AT EXISTING DIAPER DRAIN**  
SCALE: 1" = 1'-0"



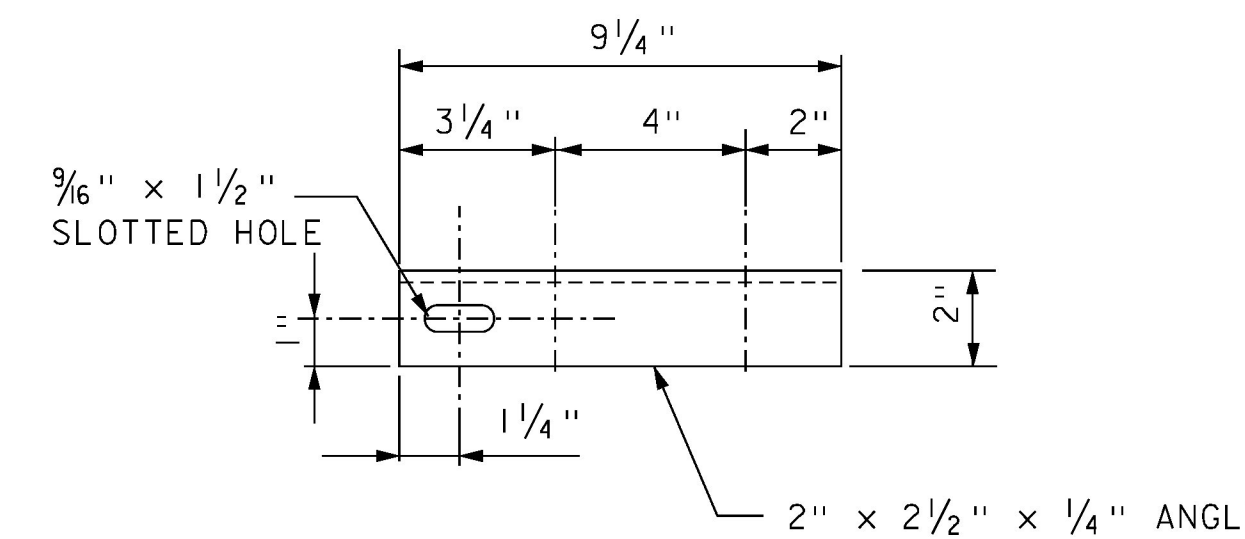
**TROUGH DOWNSPOUT REPLACEMENT DETAIL**  
(FOR BRIDGES 41N, 41S, 42N, 42S, 44N, 44S)  
NOT TO SCALE

**TROUGH DOWNSPOUT NOTES:**

1. ALL EXISTING DIMENSIONS SHALL BE FIELD VERIFIED.
2. REPLACEMENT DOWNSPOUT SHALL BE CONNECTED TO DRAINAGE TROUGH AS DIRECTED BY THE ENGINEER.
3. THE DRAINAGE PIPES, TAP SCREWS, CUTTING OF THE EXISTING STRUCTURAL STEEL AS REQUIRED, REMOVAL AND DISPOSAL OF THE EXISTING DOWNSPOUT, AND RELATED HARDWARE WILL BE PAID UNDER ITEM 506.75, STRUCTURAL STEEL.
4. THESE DETAILS ARE ILLUSTRATED AS AN EXAMPLE. CONTRACTOR TO SUBMIT FABRICATION DRAWINGS FOR APPROVAL.



**DETAIL B**  
SCALE: 3" = 1'-0"  
**DIAPER DRAIN REPAIR DETAILS**



**TROUGH SUPPORT BRACKET DETAIL A-A**  
PLAN VIEW  
SCALE: 3" = 1'-0"

**DIAPER DRAIN REPAIR NOTES:**

1. TROUGH SUPPORT BRACKETS SHALL NOT BE WELDED TO GIRDER WEB.
2. STRUCTURAL STEEL TUBING SHALL CONFORM TO ASTM-500 OR ASTM-501 AND SHALL BE GALVANIZED IN ACCORDANCE WITH ASTM A-123 AFTER FABRICATION. ALL PLATES, CRADLES, BARS AND ANGLES SHALL CONFORM TO ASTM A-36 AND SHALL ALSO BE GALVANIZED IN ACCORDANCE WITH ASTM-123 AFTER FABRICATION.
3. THE 1/4" (NOMINAL DIAMETER) GALVANIZED STEEL PIPE, PREFORMED FABRIC MATERIAL, CRADLES AND RELATED HARDWARE, TAP SCREWS, CUTTING OF THE EXISTING STRUCTURAL STEEL AS REQUIRED, REMOVAL AND DISPOSAL OF THE EXISTING DRAIN TROUGH SYSTEM AND FLUSHING OF ALL PIER CAPS TO BE PAID UNDER ITEM 506.75, STRUCTURAL STEEL.
4. THESE DETAILS ARE ILLUSTRATED AS AN EXAMPLE. CONTRACTOR TO SUBMIT FABRICATION DRAWINGS FOR APPROVAL.

**PROJECT STANDARD  
DETAILS SHEET (1)**

PROJECT NAME: WINDSOR-HARTFORD	PLOT DATE: 25-JUNE-2015
PROJECT NUMBER: IM BPNT (13)	DRAWN BY: S.BROWN
FILE NAME: z525457det_2.dgn	CHECKED BY: R.GAUDREAU
PROJECT LEADER: G.K.DONINGTON	SHEET 3 OF 36
DESIGNED BY: S.BROWN	
det2.dgn	

