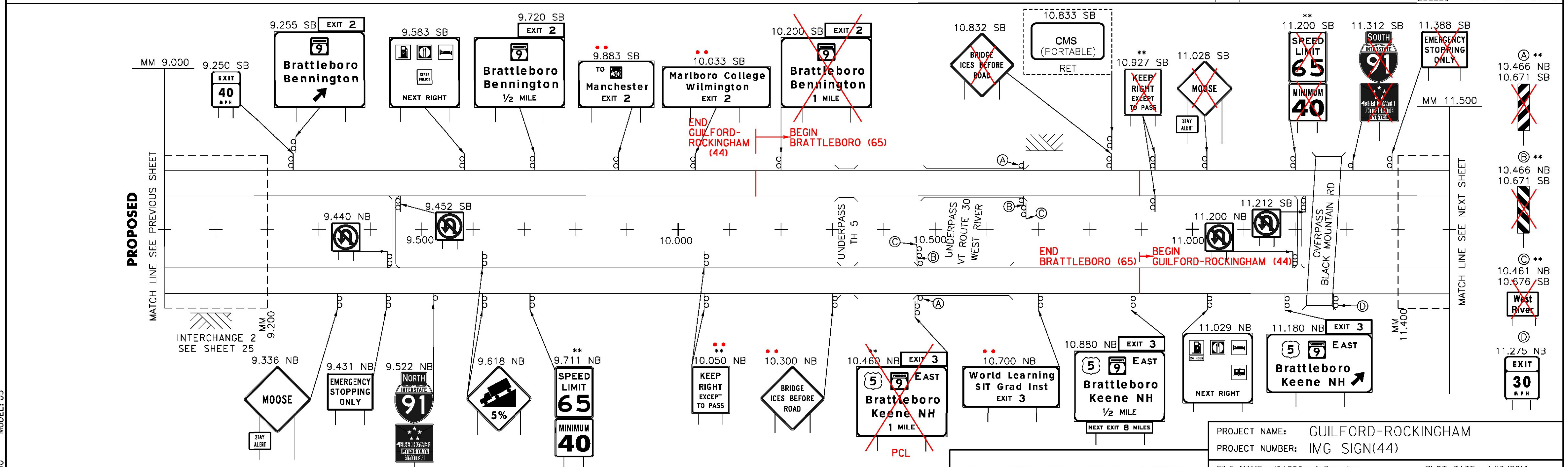


REMOVING SIGNS
 TYPE A: 42
 TYPE B: 9
 BRIDGE PLAQUE: 5

ALL EXISTING SIGNS AND POSTS TO BE REMOVED UNLESS OTHERWISE NOTED

LEGEND
 [RET] - RETAIN
 [R&S] - REMOVE & SALVAGE



CLD 12-0350 MODEL: 05
 ** = SIGN INSTALLATION TO BE COORDINATED WITH ACTIVE BRIDGE PROJECT.
 *** = SIGN INSTALLATION COORDINATED WITH ACTIVE BRIDGE PROJECT.
 ALL PROPOSED SIGNS ARE NEW UNLESS OTHERWISE NOTED

NOT TO SCALE

LEGEND
 [RET] - RETAIN
 [S&V] - SALVAGE

CLD CONSULTING ENGINEERS
 540 Commercial Street, Manchester, NH 03101
 (603) 868-8223 • Fax: (603) 868-8802
 clc@cldeengineers.com • www.cldeengineers.com
 Maine • New Hampshire • Vermont

PROJECT NAME: GUILFORD-ROCKINGHAM
 PROJECT NUMBER: IMG SIGN(44)
 FILE NAME: z12A528mainline.dgn
 PROJECT LEADER: C. GREGORY
 DESIGNED BY: J. SMITH
 MAINLINE SIGN LAYOUT 5
 PLOT DATE: 4/17/2014
 DRAWN BY: S. GOODWIN
 CHECKED BY: D. MUNRO
 SHEET 9 OF 157