

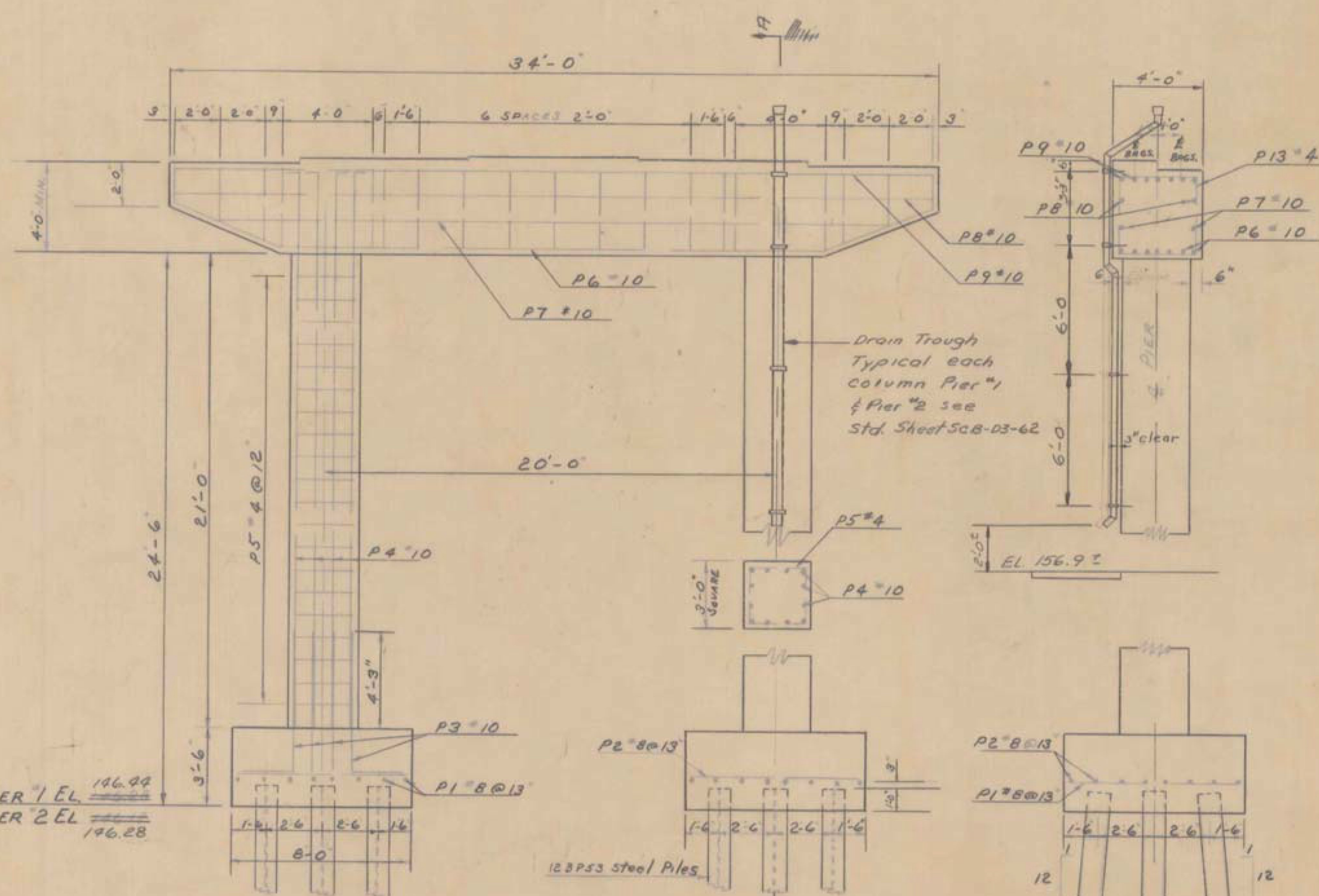
PLAN

175.23	174.94	q. 2m	174.78	174.94
175.51	175.21	q. 2m	175.06	175.21
175.61	175.31	q. 2m	175.16	175.31
175.51	175.21	q. 2m	175.06	175.21
175.23	174.94	q. 2m	174.78	174.94

PIERS - BRIDGE SEAT ELEVATIONS

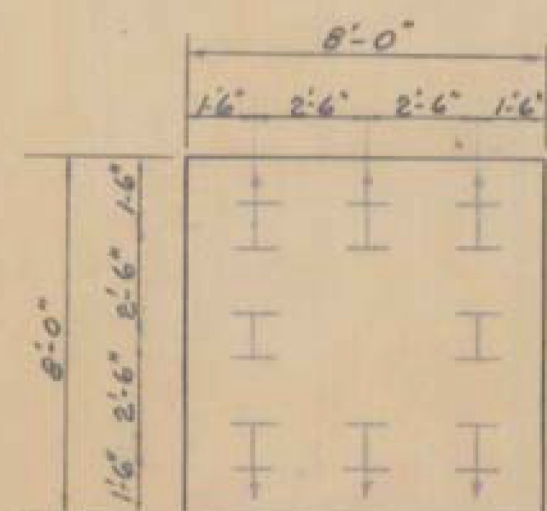


CAP REINFORCEMENT - TOP



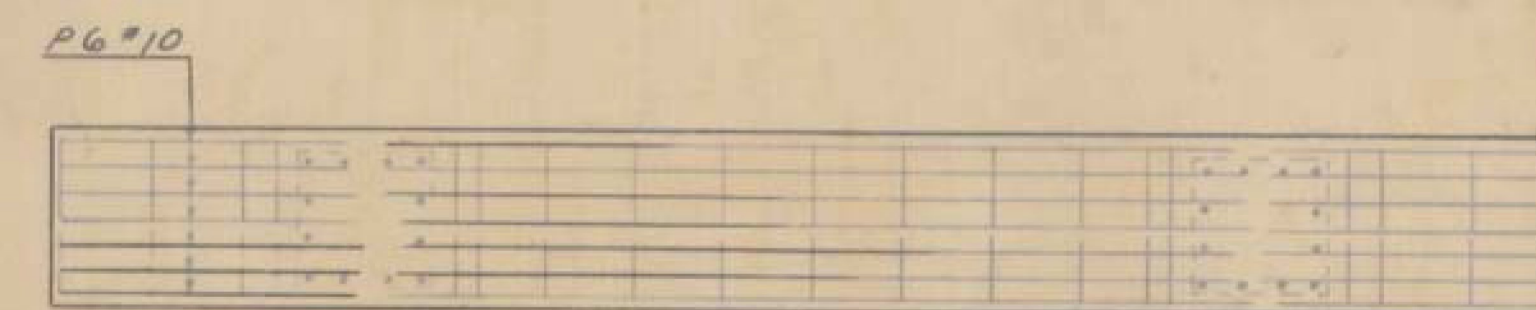
ELEVATION

SECTION A-A



PLAN OF PILES

	No. Piles	Size	Est Length of Piles	Splices Allowed for Piles Not Exceeding Plan Length (to be paid for only if used)	Splices Estimated for Piles Exceeding Plan Length (to be paid for only if used)
Pier #1	16	12BP53	60	—	4
Pier #2	16	12BP53	60	—	4



CAP REINFORCEMENT - BOTTOM

NOTES

- BRIDGE SEAT ELEVATIONS ARE FOR 6 BRSS.
- SLOPE BRIDGE SEATS 1/4" PER FOOT FOR DRAINAGE.
- COAT BRIDGE SEATS WITH ASPHALTIC-ASBESTOS COATING, ITEM 407, AFTER SUPERSTRUCTURE IS IN PLACE.
- 12BP53 STEEL PILES TO BE DRIVEN TO 35 TON BEARING CAPACITY. ESTIMATED LENGTH = 53 FEET.
- BOTTOM OF ALL PILES TO BE AT LEDGE.
- FOR GENERAL NOTES SEE SHEET BR-401.

ITEM NO.	ITEM	UNIT	NET	OVERRUN	TOTAL	FINAL
106-A	CHAN. EXCAV. OF EARTH	C.Y.				
106-B	CHAN. EXCAV. OF ROCK	C.Y.				
106-C	UNCLASS. CHAN. EXCAV.	C.Y.				
107	STRUCT. EXCAV.	C.Y.	135		130	
401-B	CONC. CLASS 8 (MOD. 1)	C.Y.	44		102	
402	REINF. STEEL	LBS.	SEE REINF. SCHEDULE			
407	ASPHALTIC-ASE COATING	S.Y.	27		28	
502-B	TREATED TIMBER PILING	L.F.				
503	SPICES FOR STEEL PILING	EA.	8		0	
504	STEEL PILING (12BP53) (In place)	L.F.	1720		1,754	
502-A	UNTREATED TIMBER PILING	L.F.				
	Cut-offs @ 50% Unit Price				166	

Stage I Construction

STATE OF VERMONT
DEPARTMENT OF HIGHWAYS

TOWN OF SWANTON - HIGHGATE

ROUTE No. I-89 LOG STA.

INTERSTATE OVER ROUTE 78
DETAILS - PIERS #152 (N.B.)

SCALE 3/4" = 1'-0"

SURVEYED BY NEETER-MARTIN J.C. (N.B.)

DRAWN BY A.V.C. CHECKED BY J.C. (N.B.)

PROJECT NO. I-89-3(32)

SHEET 147 OF 240

BR 409 OF 407

SWANTON
IM 089-3(70)
SHEET 28 OF 31
FOR REFERENCE
ONLY