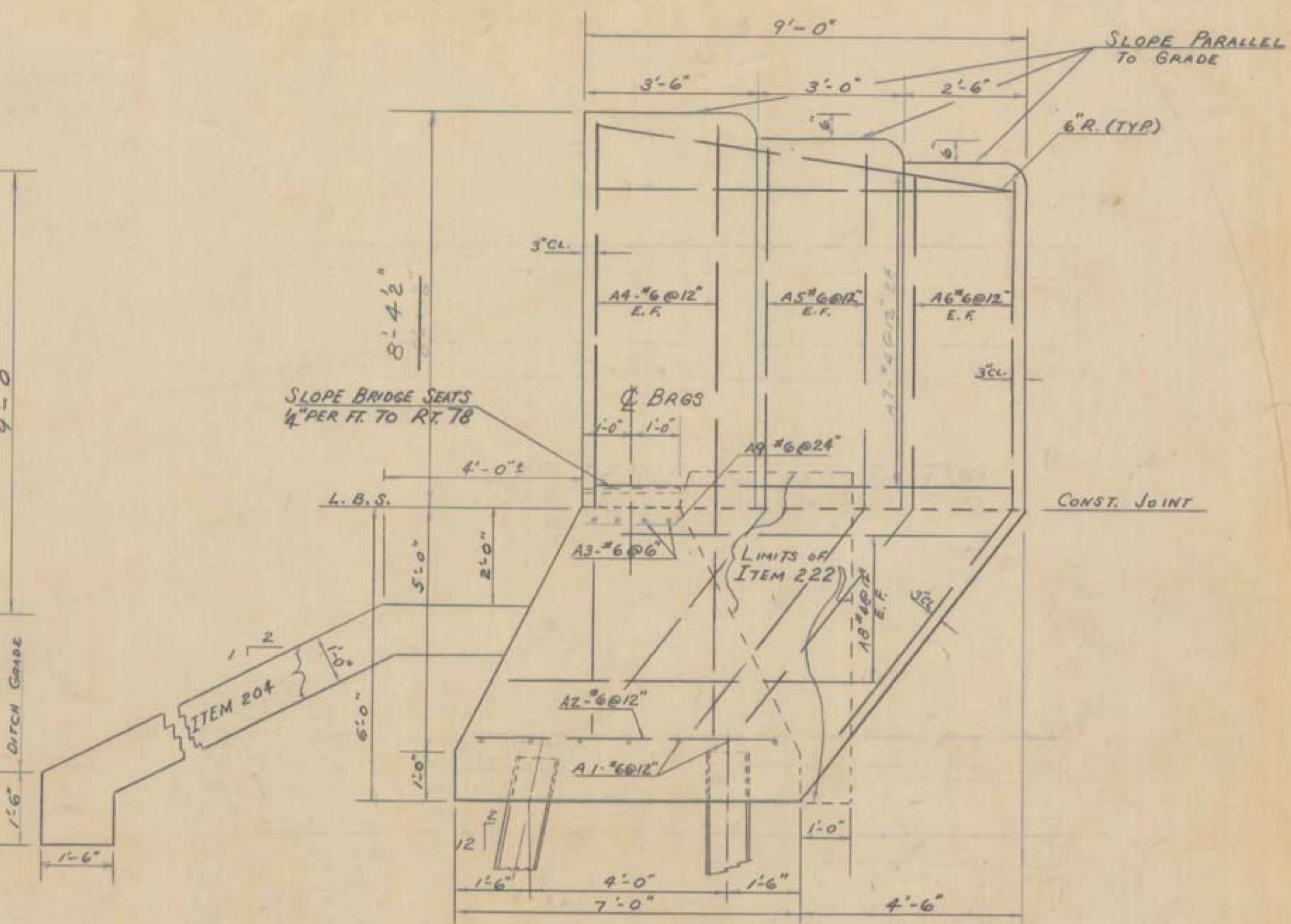
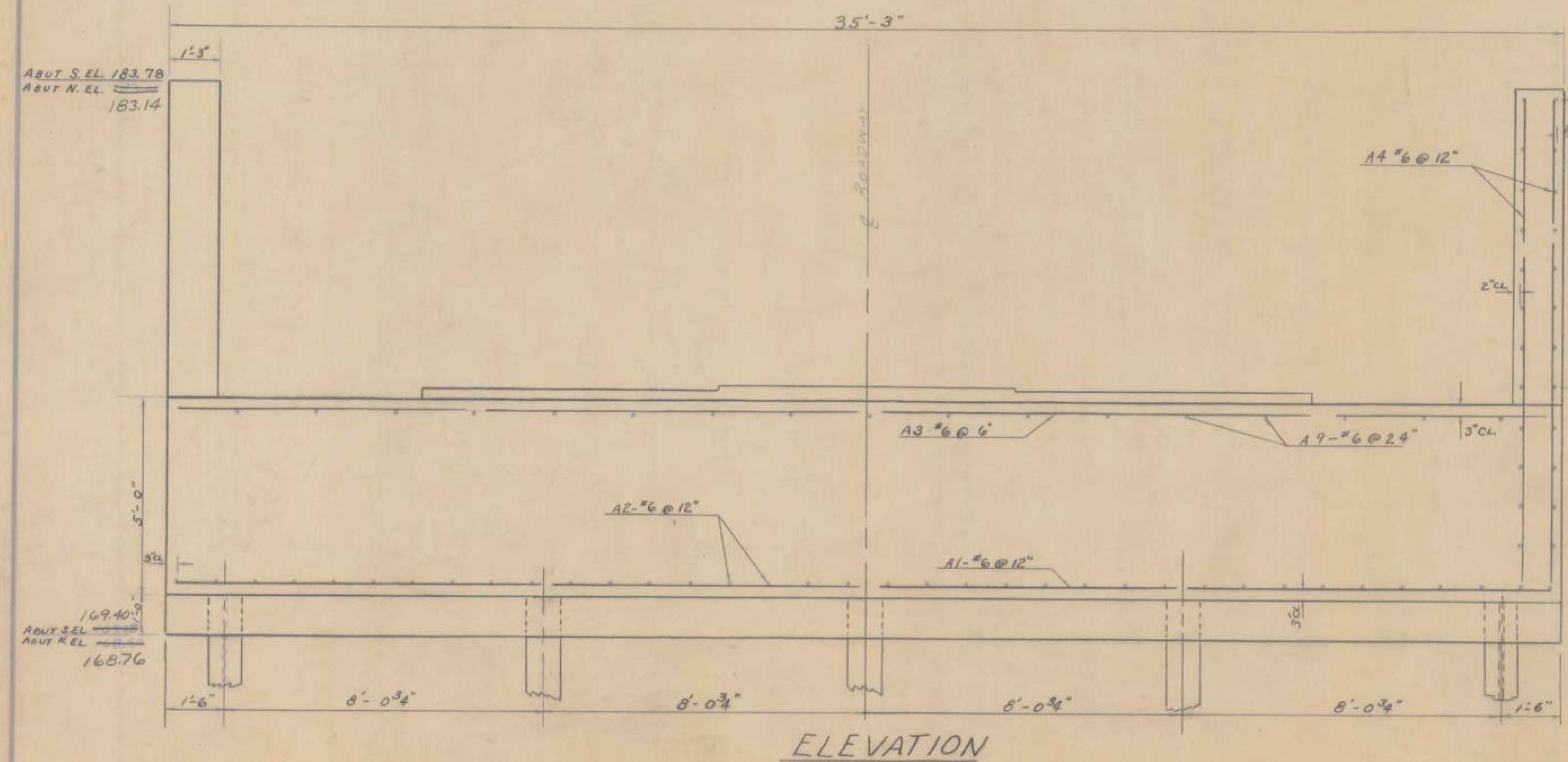


PLAN



SECTION A-A



ELEVATION

	No. PILES	SIZE	EST. LENGTH OF PILES	SPICES ALLOWED FOR PILES NOT EXCEEDING PLAN LENGTH (TO BE PAID FOR ONLY IF USED)	SPICES ESTIMATED FOR PILES EXCEEDING PLAN LENGTH (TO BE PAID FOR ONLY IF USED)
ABUT #1	10	12BP53	85'	10	2
ABUT #2	10	12BP53	85'	10	2

NOTES

1. COAT EXPOSED BRIDGE SEATS WITH ITEM 407, ASPHALTIC-ASB. COATING, 1/2" THICK, AFTER SUPERSTRUCTURE IS IN PLACE.
2. PILES TO BE 12BP53, EST. LGTH. = 80'
3. PILES DRIVEN TO 35 TON BEARING CAPACITY.
4. BRIDGE SEAT ELEVATIONS ARE FOR 2 BARS.
5. BOTTOM OF ALL PILES TO BE AT LEDGE.
6. SEE GENERAL NOTES SHEET BR = 401

SWANTON
IM 089-3(70)
SHEET 27 OF 31
FOR REFERENCE
ONLY

ITEM NO.	ITEM	UNIT	NET	TOTAL	FINAL
106-A	CHAN. EXCAV. OF EARTH	C.Y.			
106-B	CHAN. EXCAV. OF ROCK	C.Y.			
106-C	UNCLASS. CHAN. EXCAV.	C.Y.			
107	STRUCT. EXCAV.	C.Y.	25		0
401-B	CONC. CLASS B (MOD.)	C.Y.	73		94
402	REINF. STEEL	LB	(SEE REINF. SCHEDULE)		
407	ASPHALTIC ASB. COATING	S.Y.	81		8
502-B	TREATED TIMBER PILING	L.F.			
503	SPICES FOR STEEL PILING	EA	24		20
504	STEEL PILING (12BP53) (In place)	L.F.	1700		1533
502-A	UNTREATED TIMBER PILING	L.F.			
204	SUBBASE OF CRUSHED ROCK, MODIFIED, (UNDER STRUCTURE)	C.Y.	73		109
222	Gravel Backfill	C.Y.	30		0
	Cut-offs @ 50% Unit Price	L.F.			167

STAGE I CONSTRUCTION

STATE OF VERMONT
DEPARTMENT OF HIGHWAYS

TOWN OF SWANTON-HIGHGATE
ROUTE No. I-89 LOG STA.
INTERSTATE OVER ROUTE 78
DETAILS OF ABUTS. (NORTH SOUTH)
SCALE 1/2" = 1'-0" (N.B.)
SURVEYED BY WEBSTER-MARTIN J.C. (N.B.)
A.J.C. (N.B.)
DRAWN BY J.C. (N.B.)
PROJECT No. I-89-3(32)
SHEET 106 OF 246