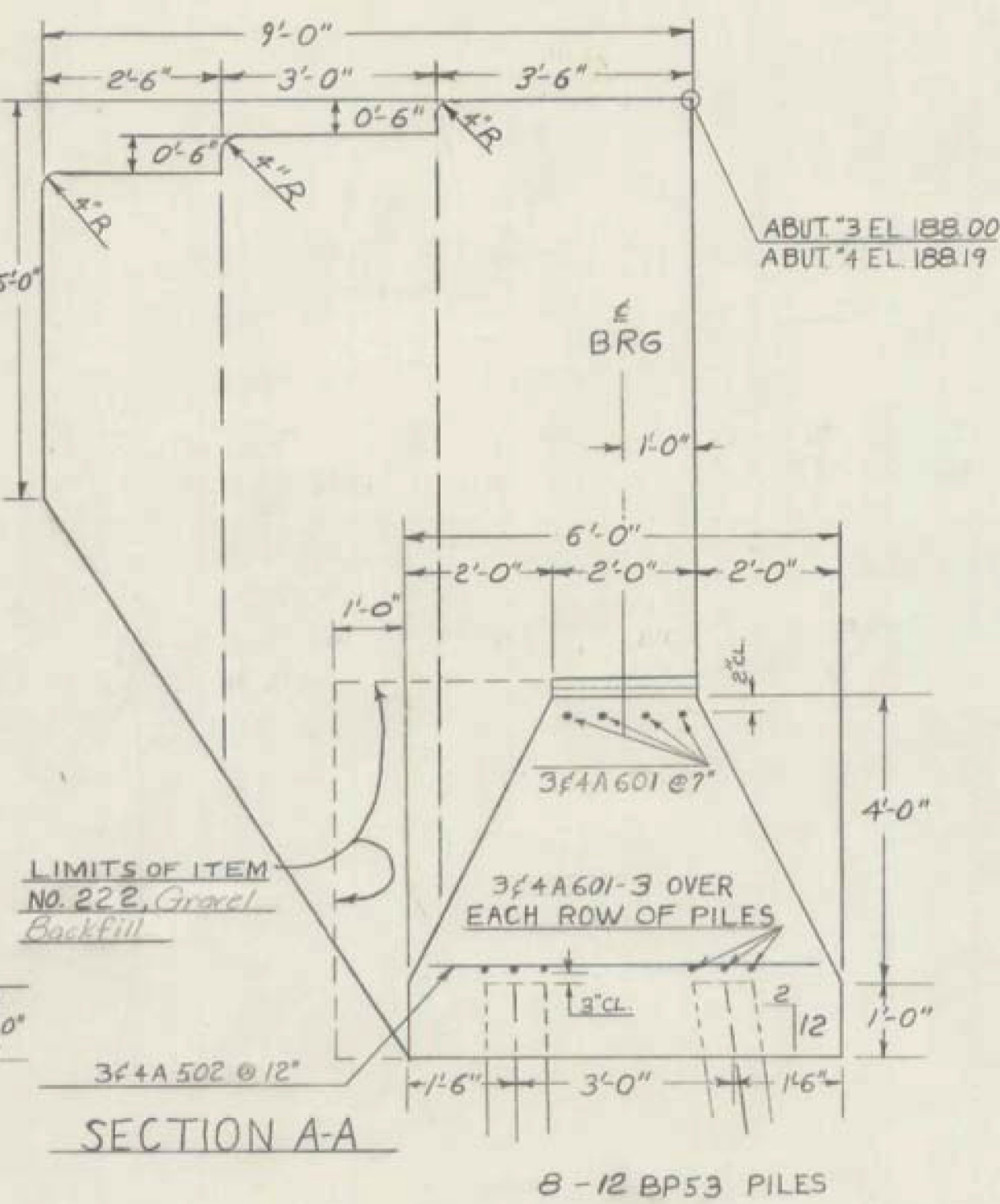
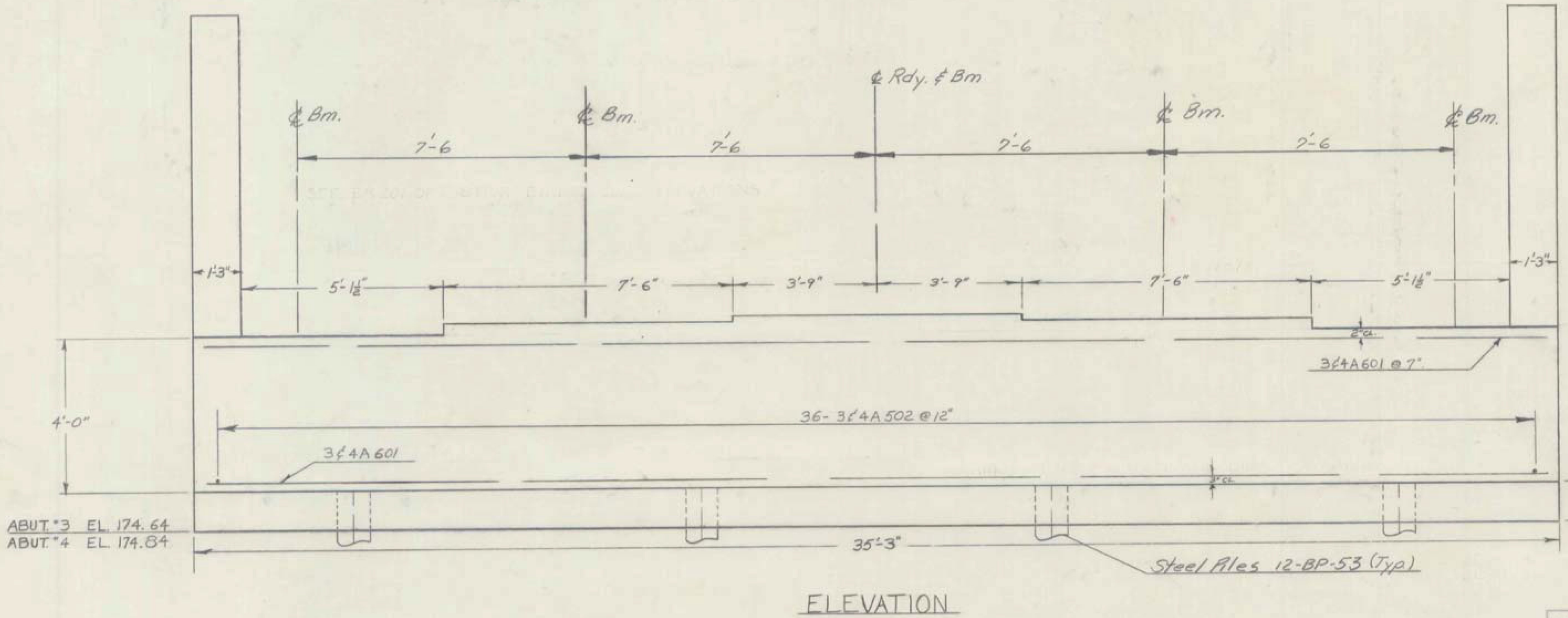


**NOTES:**  
 1- For bridge seat elevations see BR 301  
 2- Maximum pile design load is 40 tons per pile.



LOCATION	NO. PILES	SIZE	EST LENGTH OF PILES	SPLICES ALLOWED FOR PILES NOT EXCEEDING PLAN LENGTH (TO BE PAID FOR ONLY IF USED)	SPLICES ESTIMATED FOR PILES EXCEEDING PLAN LENGTH (TO BE PAID FOR ONLY IF USED)
ABUT #3	8	12 BP53	85 Ft.	8	2
PIER #3	12	12 BP53	55 Ft.	—	2
PIER #4	12	12 BP53	55 Ft.	—	2
ABUT #4	8	12 BP53	75 Ft.	8	2

ITEM NO.	ITEM	UNIT	NET	TOTAL	FINAL
	CHAN. EXCAV. OF EARTH	C.Y.			
	CHAN. EXCAV. OF ROCK	C.Y.			
	UNCLASS. CHAN. EXCAV.	C.Y.			
	STRUCT. EXCAV.	C.Y.			
	CONC. CLASS AA (MOD.)	C.Y.			
	CONC. CLASS B (MOD.)	C.Y.			
	REINF. STEEL	LBS.			
	ASPHALTIC-ASB. COATING	S.Y.			
	TREATED TIMBER PILING	L.F.			
	SPLICES FOR STEEL PILING	EA.			
	STEEL PILING	L.F.			
	UNTREATED TIMBER PILING	L.F.			

**SWANTON**  
 IM 089-3(70)  
 SHEET 21 OF 31  
 FOR REFERENCE  
 ONLY

BR. 306 OF 308

**STATE OF VERMONT**  
 DEPARTMENT OF HIGHWAYS

TOWN OF SWANTON - HIGHGATE INT.  
 ROUTE No. I 89 STA. 591-6+6  
 NB I-89 over the St. J. & L. C. Railroad

ABUTMENTS #3 & #4 DETAILS  
 SCALE 1/4" = 1'-0"

SURVEYED BY \_\_\_\_\_  
 DRAWN BY J. LYLES CHECKED BY *HL*  
 PROJECT No. I 89-3(32)  
 SHEET 140 OF 240