

SHOP NOTE:
SEE DRAWING M1 FOR RUNNING DIMENSIONS DETAIL

TOP VIEW

BOTTOM VIEW

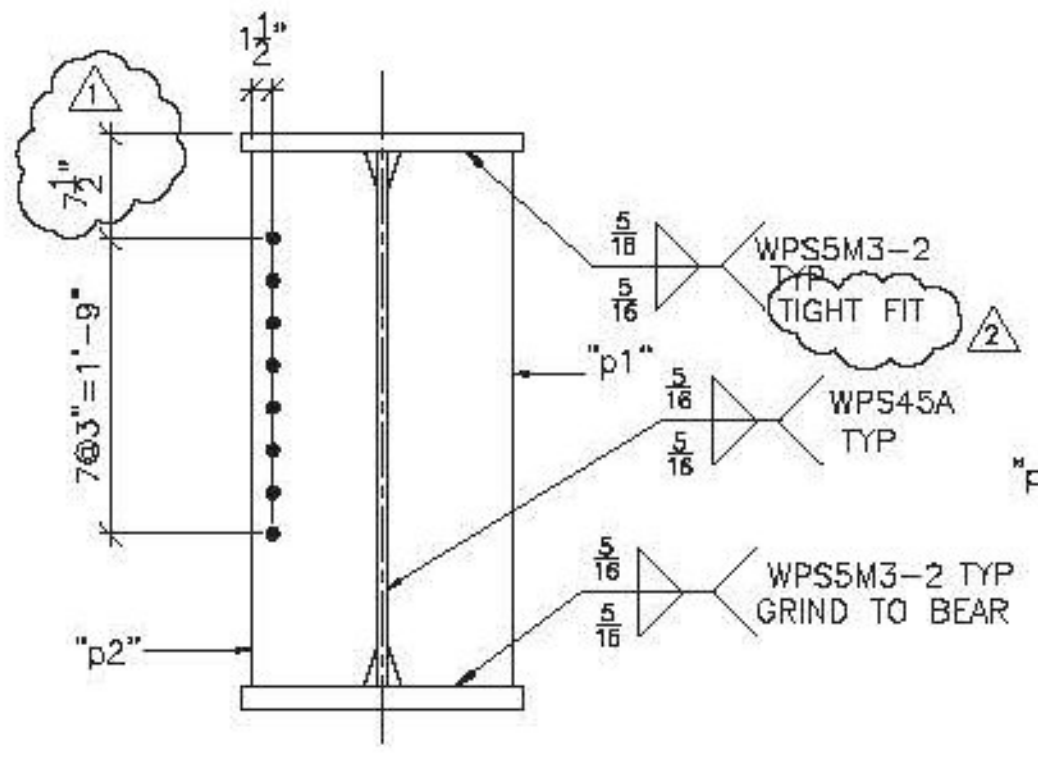
Vermont Agency of Transportation
RECEIVED
CK'D BY RKJUC CK'D BY WL
February 17, 2015
RESUBMIT NO. Approved
BY KH DATE 2-19-2015

* STIFFENER FOR LATERAL SLIDE SUPPORT

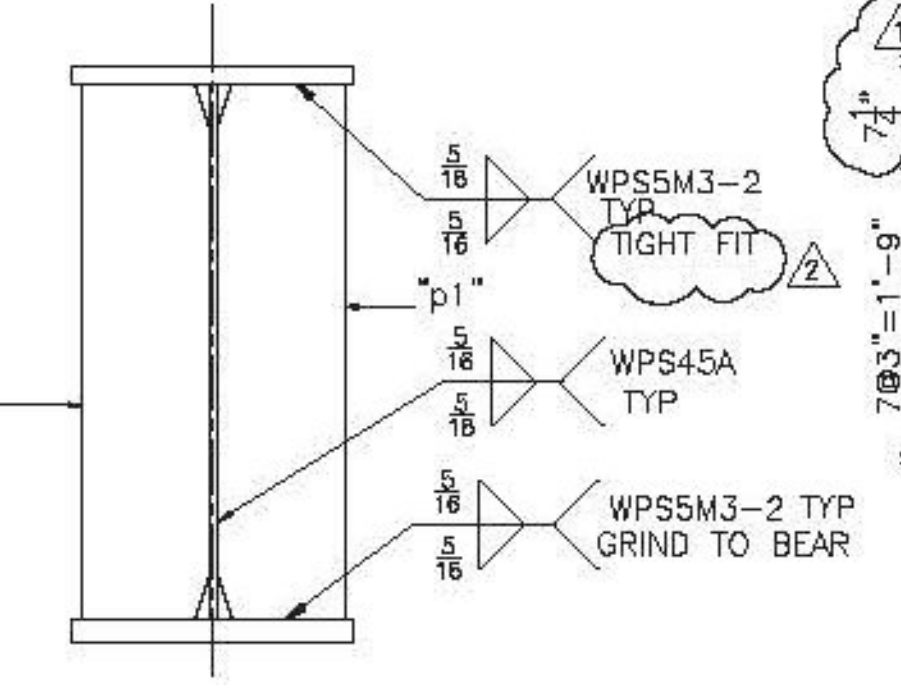
BILL OF MATERIAL

SHIP	SHIP MARK	NO. PCS.	PIECE MARK	DESCRIPTION	LENGTH	REMARKS	WT.
1	G1			WELDED PLATE GIRDER			37868
		1	wp1	R 2 X 38	53'-6 9/16"	CVN	4328
		1	wp2	R 2 X 38	80'-0"	CVN	8466
		1	tf1	R 1 1/2 X 20	80'-0"	CVN	6806
		1	tf2	R 1 1/2 X 20	53'-6 9/16"	CVN	4556
		1	bf1	R 1 1/2 X 20	44'-5 1/4"	CVN	4915
		1	bf2	R 1 1/2 X 20	44'-5 1/4"	CVN	4915
		1	bf3	R 1 1/2 X 20	44'-5 5/8"	CVN	4915
		6	p1	SEE SHT. M2			
		2	p2	SEE SHT. M2			
		7	p3	SEE SHT. M2			
		1	dp1	1/4" THK. DRIP BAR SEE SHT. M1 & M2			

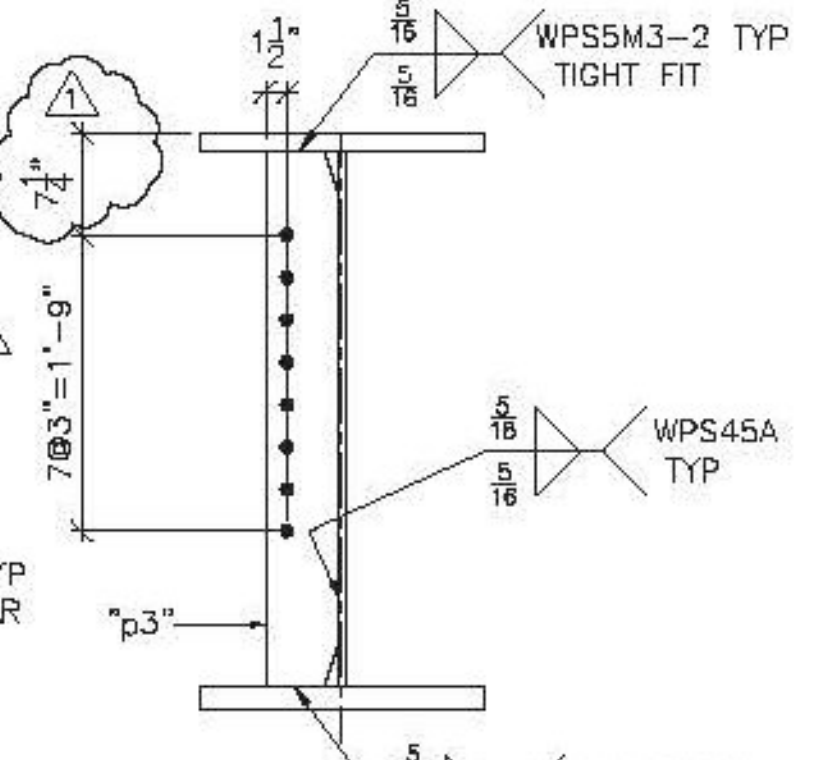
BOTTOM FLANGE R MATERIAL SHALL BE ASTM A709 GR. HPS 70W



SECTION B



SECTION C



SECTION D

SEE SHEET M1 FOR CAMBER AND SECTIONS & DETAILS NOT SHOWN

SHOP NOTE:

ENTIRE TOP FLANGE IS IN COMPRESSION
ENTIRE BOTTOM FLANGE IS IN TENSION

FINISH	SSPC SP10				
MATERIAL	ASHTO M270 (ASTM A709) GR. 50W U.O.N.				
HOLES	15/16" U.O.N.				
ELECTRODES					
WELDS	PER WPS	2/13/15	AS NOTED	JAC	
SURFACE PREP		1/29/15	AS NOTED	JAC	
		NO DATE	DESCRIPTION	BY	

ARC
ADVANCED RESOURCES & CONST. ENTERPRISES, INCORPORATED
P.O. BOX 120 KINGFIELD, ME. 04947
PHONE: (207) 265-2646 - FAX: (207) 265-4054

DRAFTER	JAC	STRINGER DETAILS, G1	PROJECT NO.	14-180
DATE	1/6/15	HARTFORD, VT I-91 NB OVER US RTE. 5		
CHECKED	JS	PROJECT NUMBER IM 091-2(79)		
DATE	1/14/15	G.C. PCL CIVIL CONSTRUCTORS	DWG. NO.	2