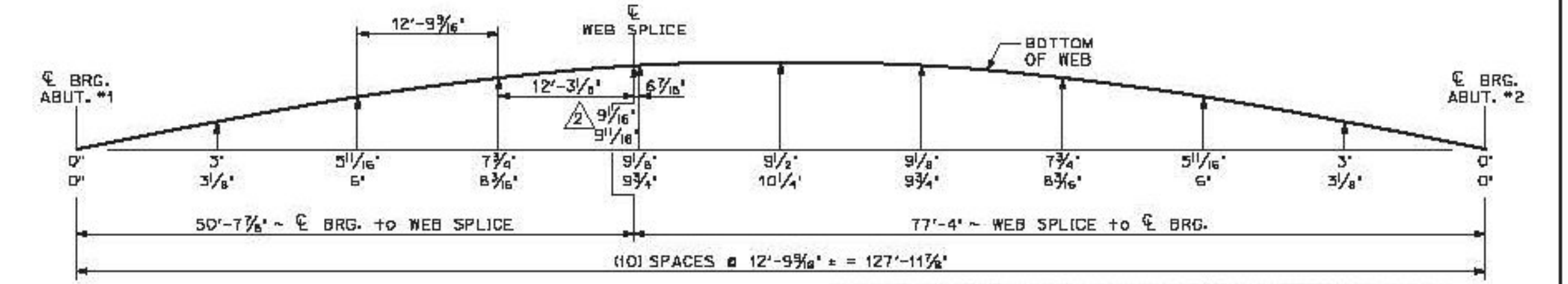
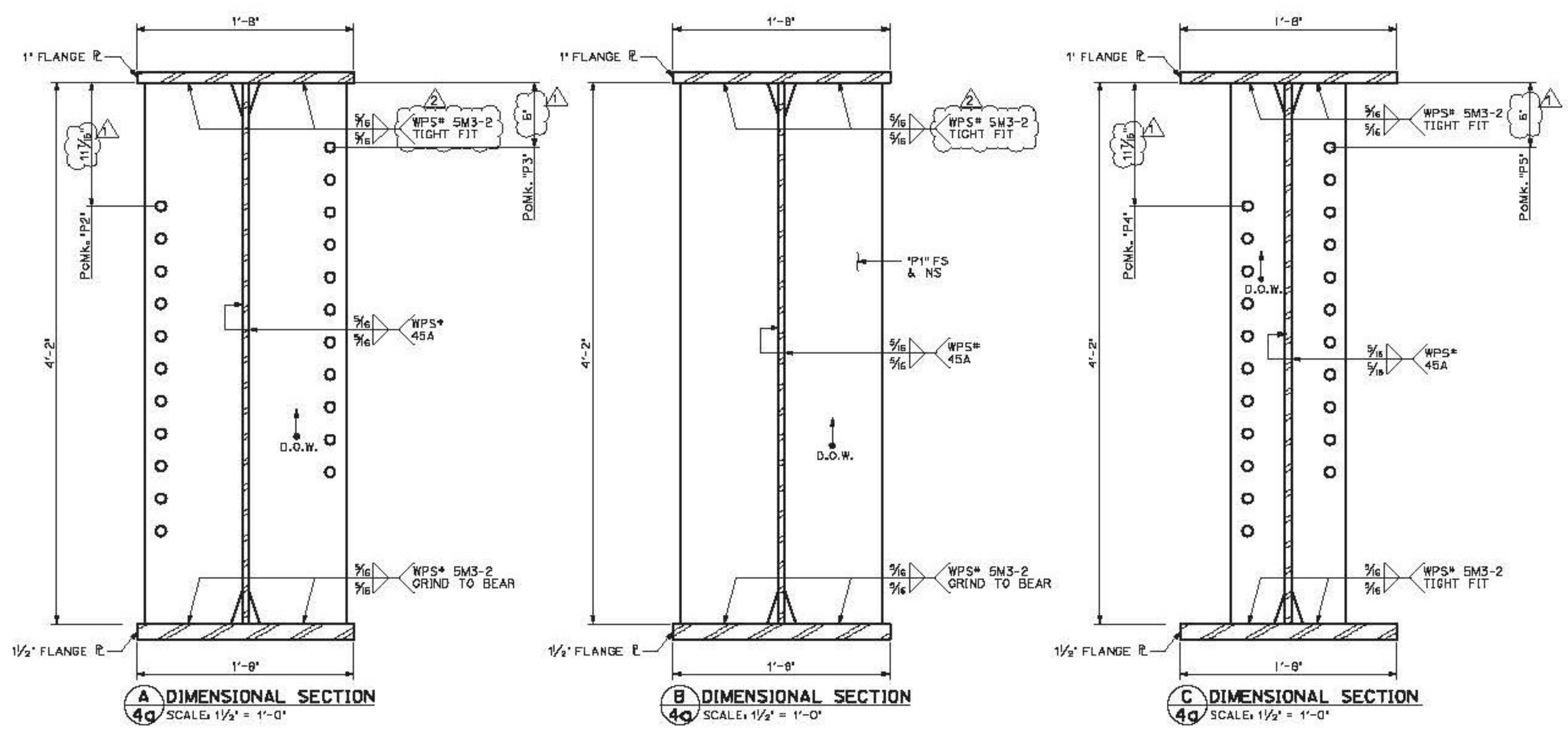


SHIP MARK CHANGED FROM 'G9' TO 'G9'. TYPICAL ALL APPLICABLE DETAILS

**1 DIMENSIONAL PLANS & ELEVATIONS - GIRDER 'G9'**  
 HORIZONTAL SCALE: 1/4" = 1'-0"  
 VERTICAL SCALE: EXAGGERATED 2x



THE TWO CAMBER DIMENSIONS SHOWN REPRESENT THE FOLLOWING:  
 TOP DIMENSION - TOTAL CAMBER IN FINISHED BEAM IN A NO-LOAD POSITION  
 BTM. DIMENSION - TOTAL CAMBER IN BEAM @ TIME OF FABRICATION



**BILL OF MATERIALS**

SHIP	SHIP MARK	NO. PCS.	PIECE MARK	DESCRIPTION	LENGTH	REMARKS	MAT'L
1	G9			BRIDGE GIRDER ASSEMBLY	133'-9 1/2"	38,225#	
		1	WP5	R 9/8" x 50'	53'-4 1/4"	5700#	CVN (LENGTH VERIFIED)
		1	WP6	R 9/8" x 50'	80'-1 3/4"	8550#	CVN
		1	TF5	R 1" x 20"	80'-1"	5475#	CVN
		1	TF6	R 1" x 20"	53'-4 3/4"	3650#	CVN
		1	BF5	R 1 1/2" x 20"	80'-0 1/4"	8200#	CVN
		1	BF6	R 1 1/2" x 20"	53'-4"	5450#	CVN
		4	P1	SEE SHEET 8a			
		2	P2	SEE SHEET 8a			
		2	P3	SEE SHEET 8a			
		5	P4	SEE SHEET 8a			
		6	P5	SEE SHEET 8a			

Vermont Agency of Transportation  
**RECEIVED**  
 CK'D BY RKJC OK'D BY WL  
 February 17, 2015  
 RESUBMIT NO Approved  
 BY KH DATE 2-19-2015

PROJECT No. IM 091-2(79)  
 ITEM No. 506.55

FINISH	SSPC SP10
MATERIAL	AASHTO M270 (ASTM A709) GRADE 50W
HOLES	15/16" @ U.N.O.
ELECTRODES	PER WELD PROCEDURE
WELDS	PER WELD PROCEDURE
SURFACE PREP	SSPC SP6

REVISIONS

NO.	DATE	DESCRIPTION	BY
-----	------	-------------	----

ARC  
 ADVANCED RESOURCES & CONST. ENTERPRISES, INCORPORATED  
 P.O. BOX 120 KINGFIELD, ME. 04947  
 PHONE: (207) 265-2646 - FAX: (207) 265-4054

DRAFTER: JHH  
 DATE: JAN 2015  
 CHECKED: GNM  
 DATE: JAN 2015

SOUTHBOUND GIRDER 'G9'  
 HARTFORD, VT I-91 SB OVER US RTE 6  
 PROJECT NUMBER IM 091-2(79)  
 PCL CIVIL CONSTRUCTORS

PROJECT NO. 14-180  
 DWG. NO. 40