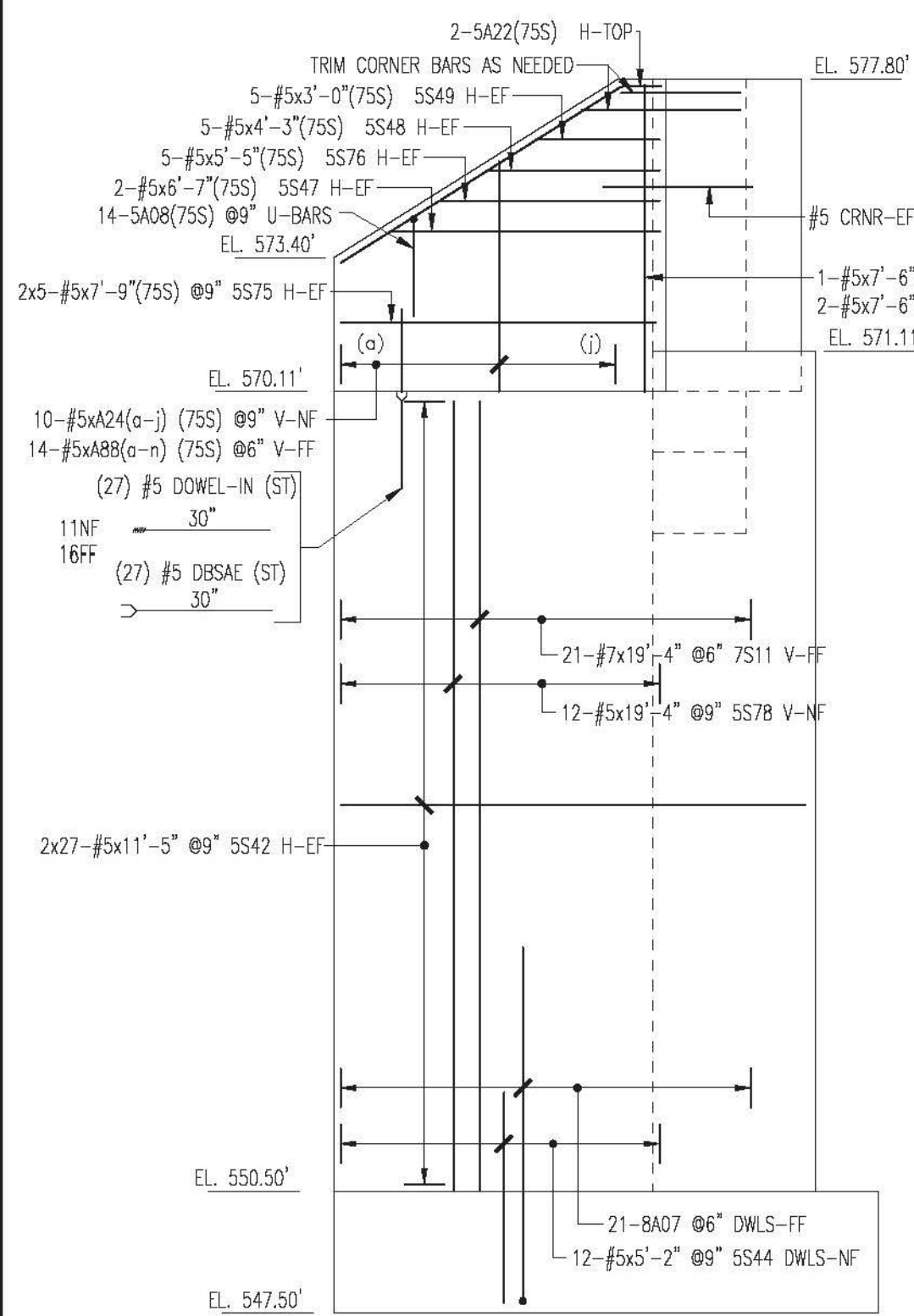
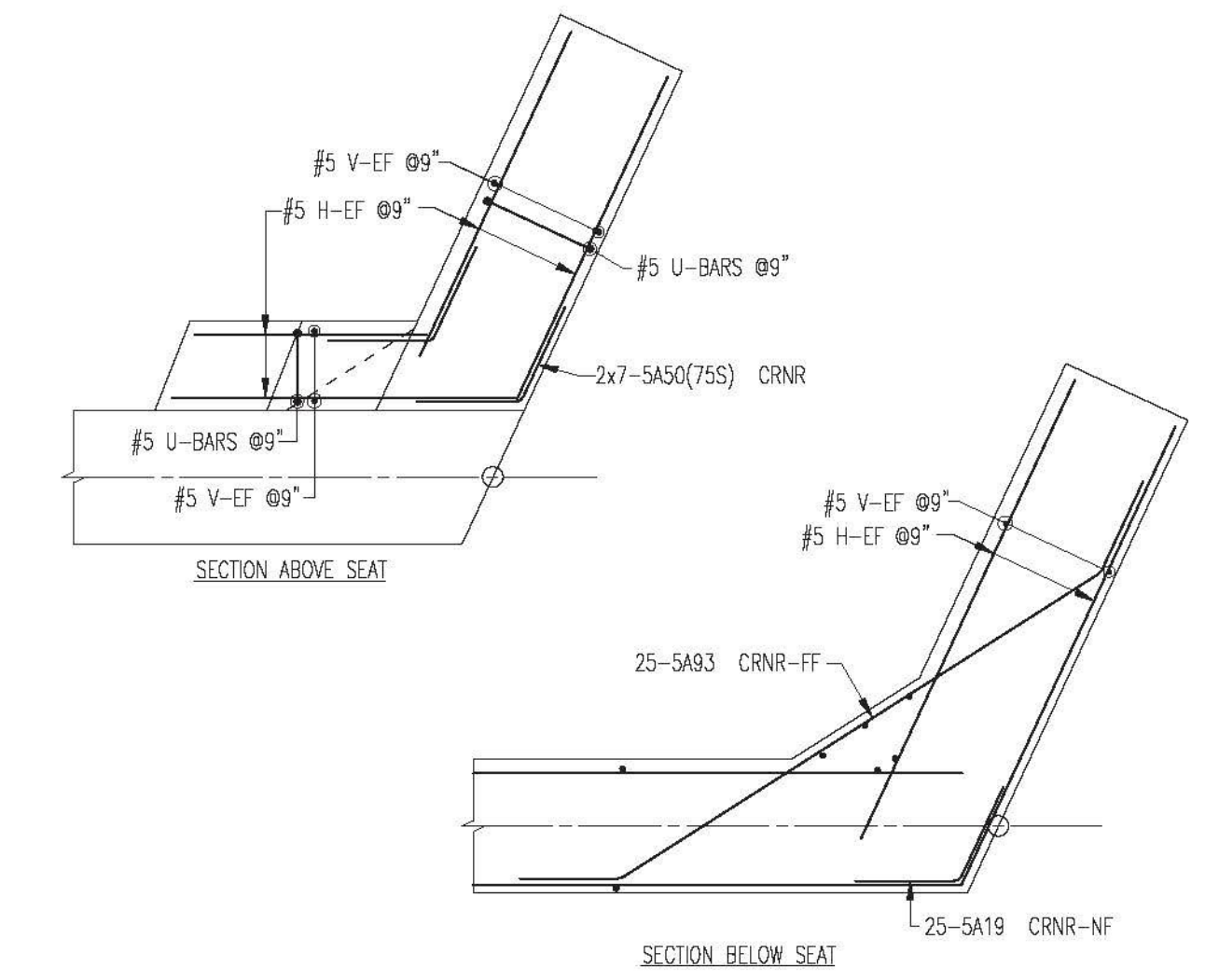
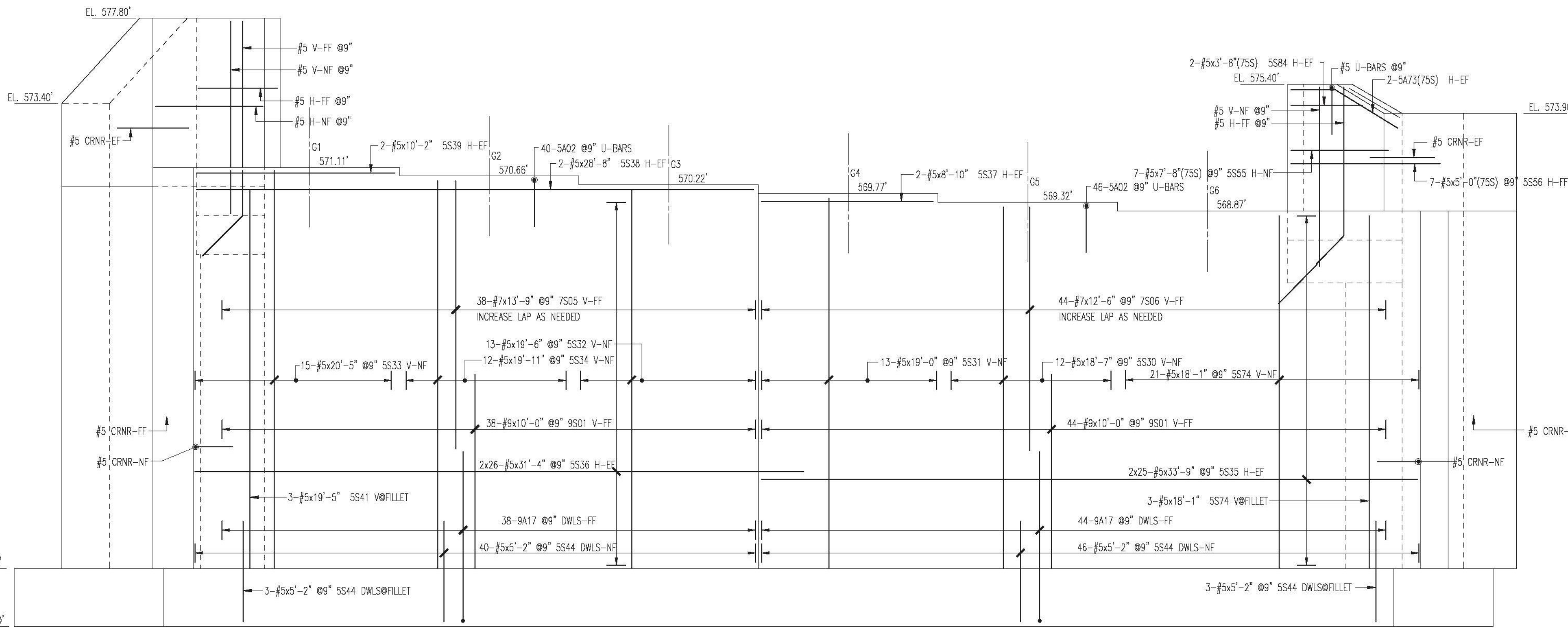


ABUTMENT 2 FOOTING REINFORCEMENT PLAN

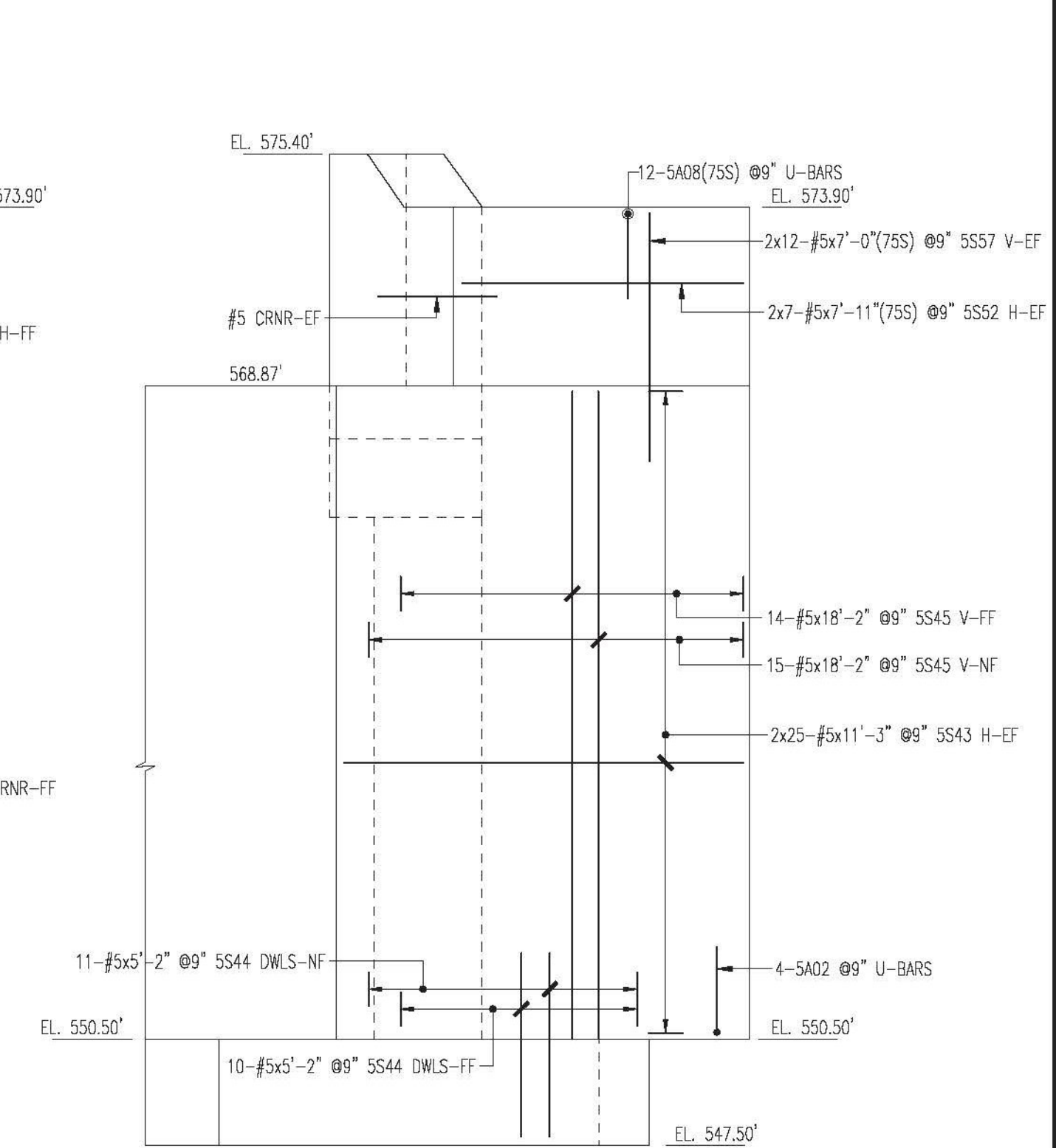


WINGWALL 3 (WW3) ELEVATION

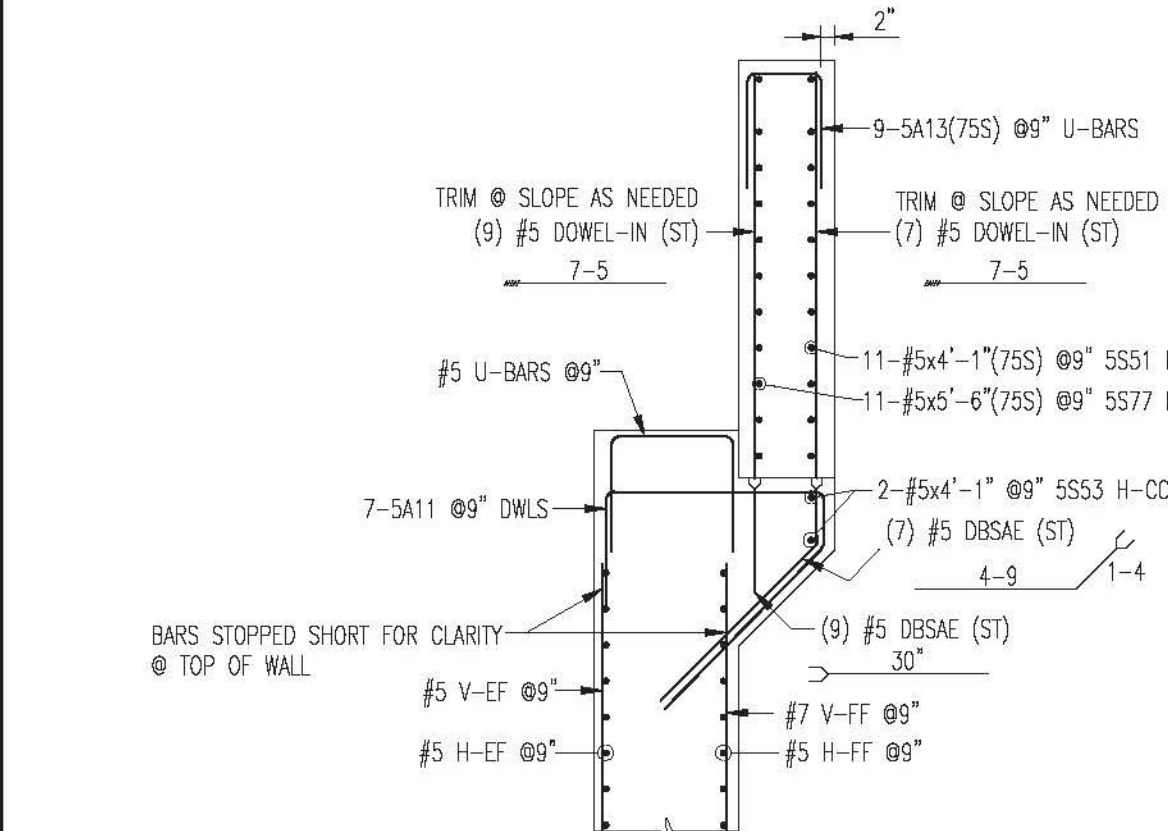
NOTE: ALL DOWEL BAR SUBS NOT INCLUDED IN THE BAR SCHEDULES DUE TO NOT BEING A "LIVE BAR" IN REBARCAD—THUS, THEY ARE CALLED OUT, QUANTITY, SIZES AND LENGTHS ON APPROPRIATE ELEVATIONS



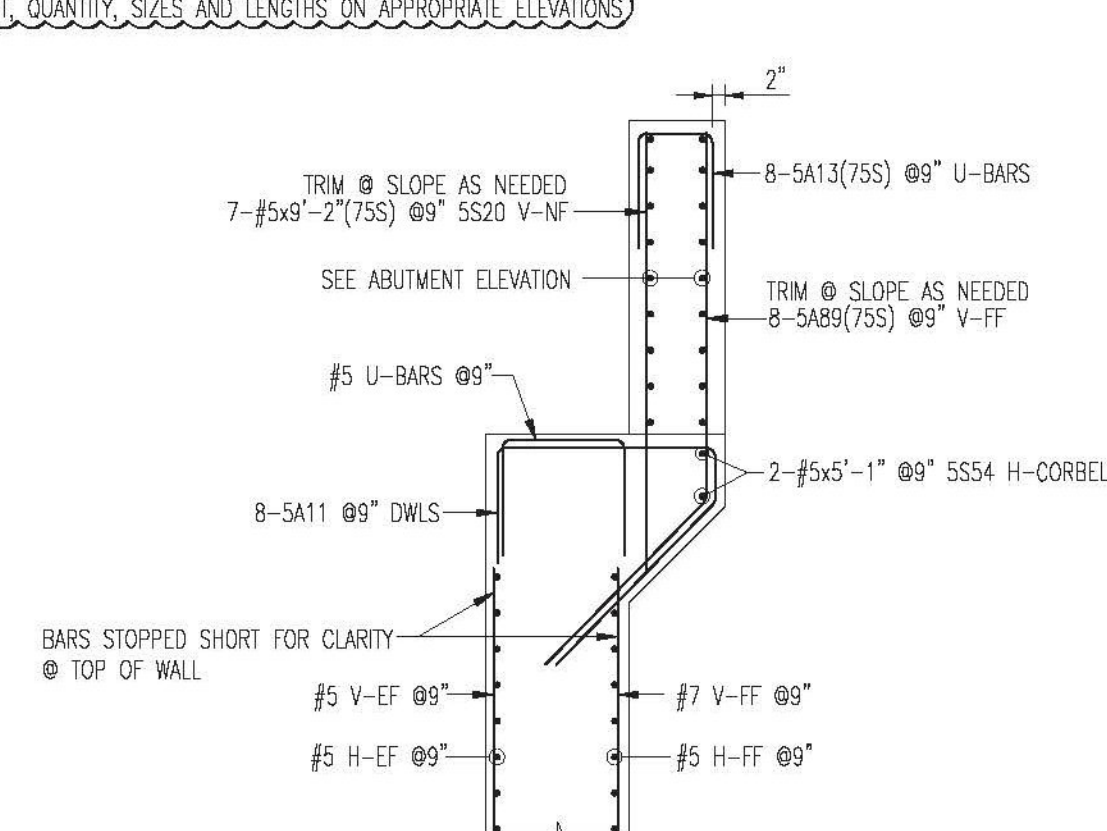
ABUTMENT 2 ELEVATION



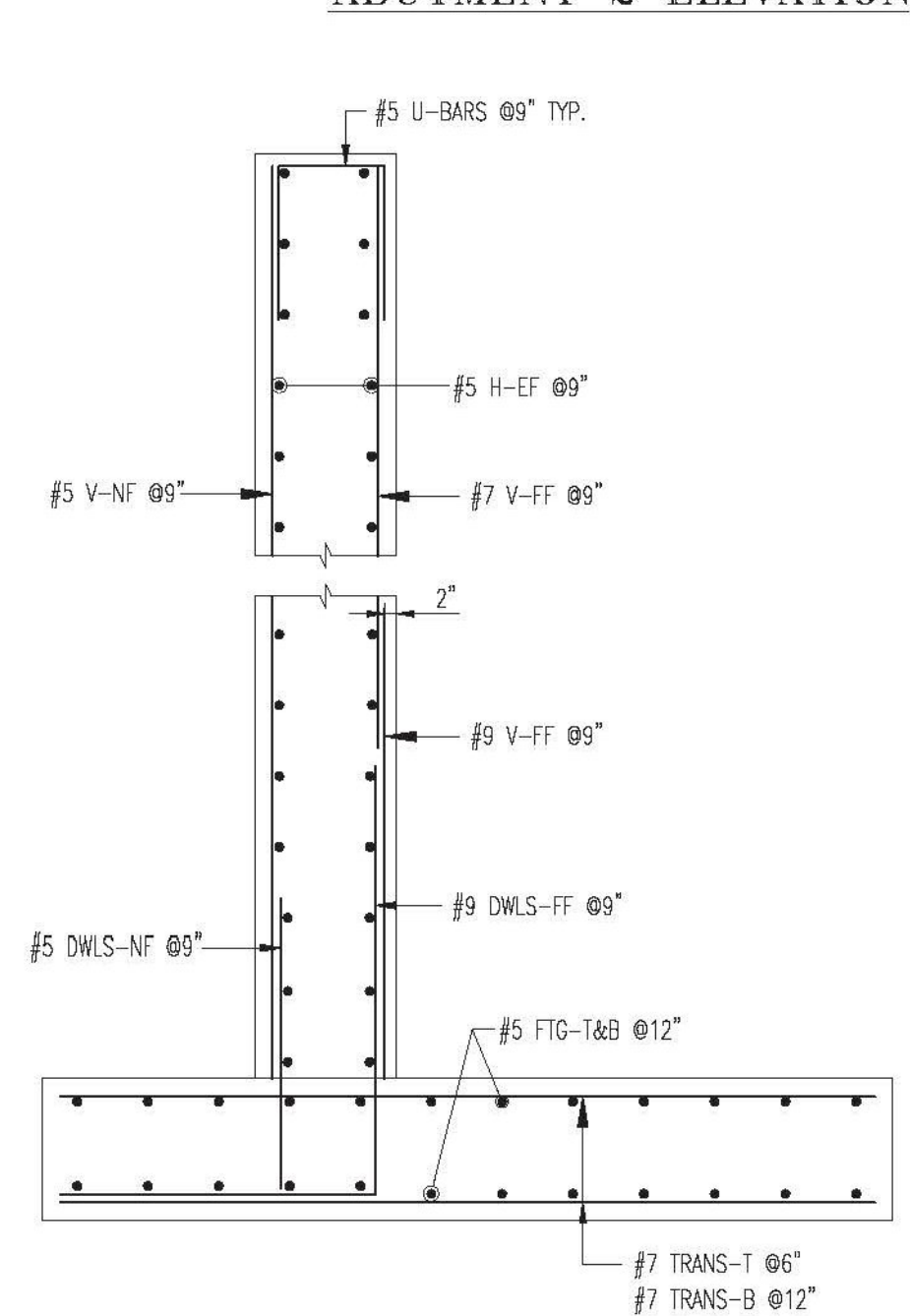
WINGWALL 4 (WW4) ELEVATION



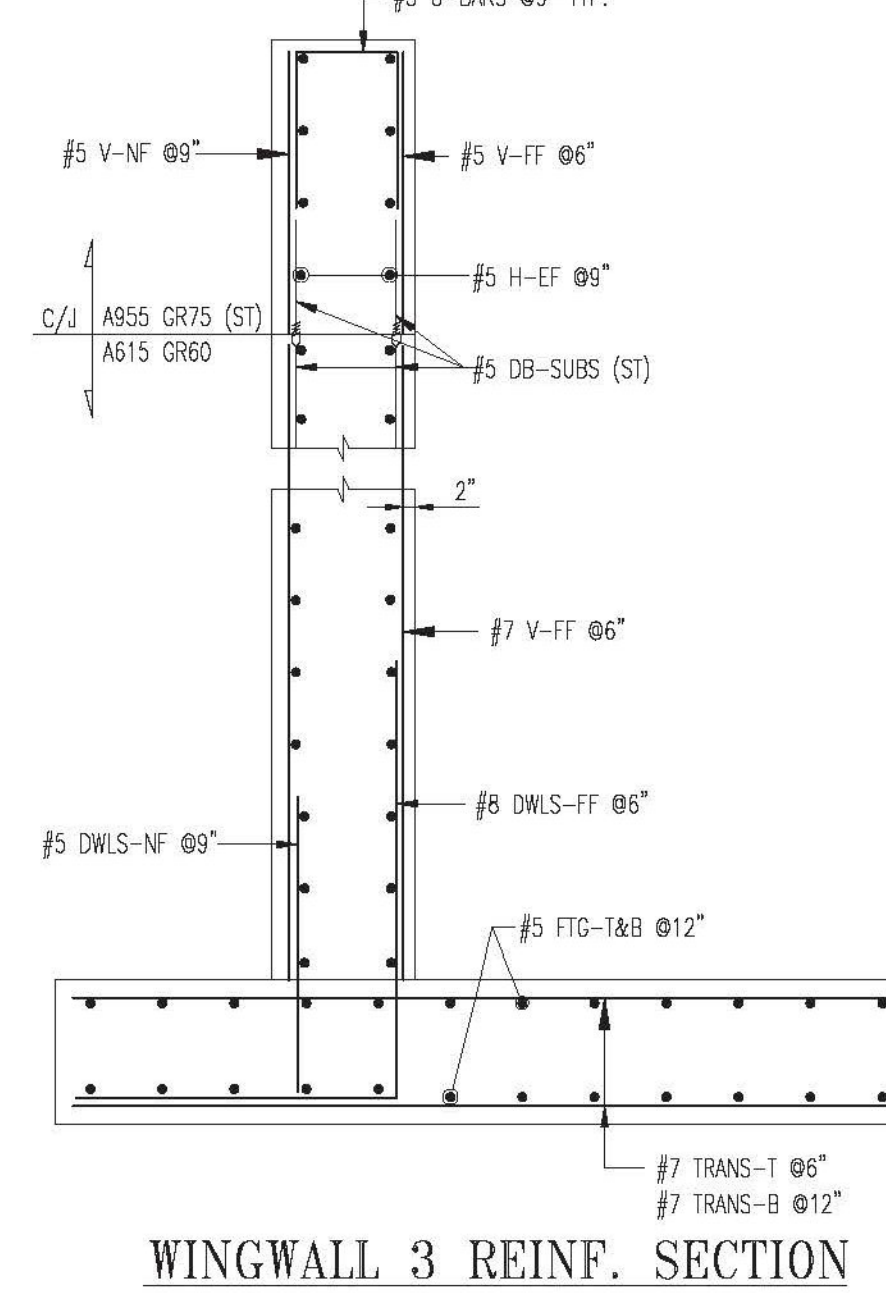
CHEEKWALL @ WW3 SECTION



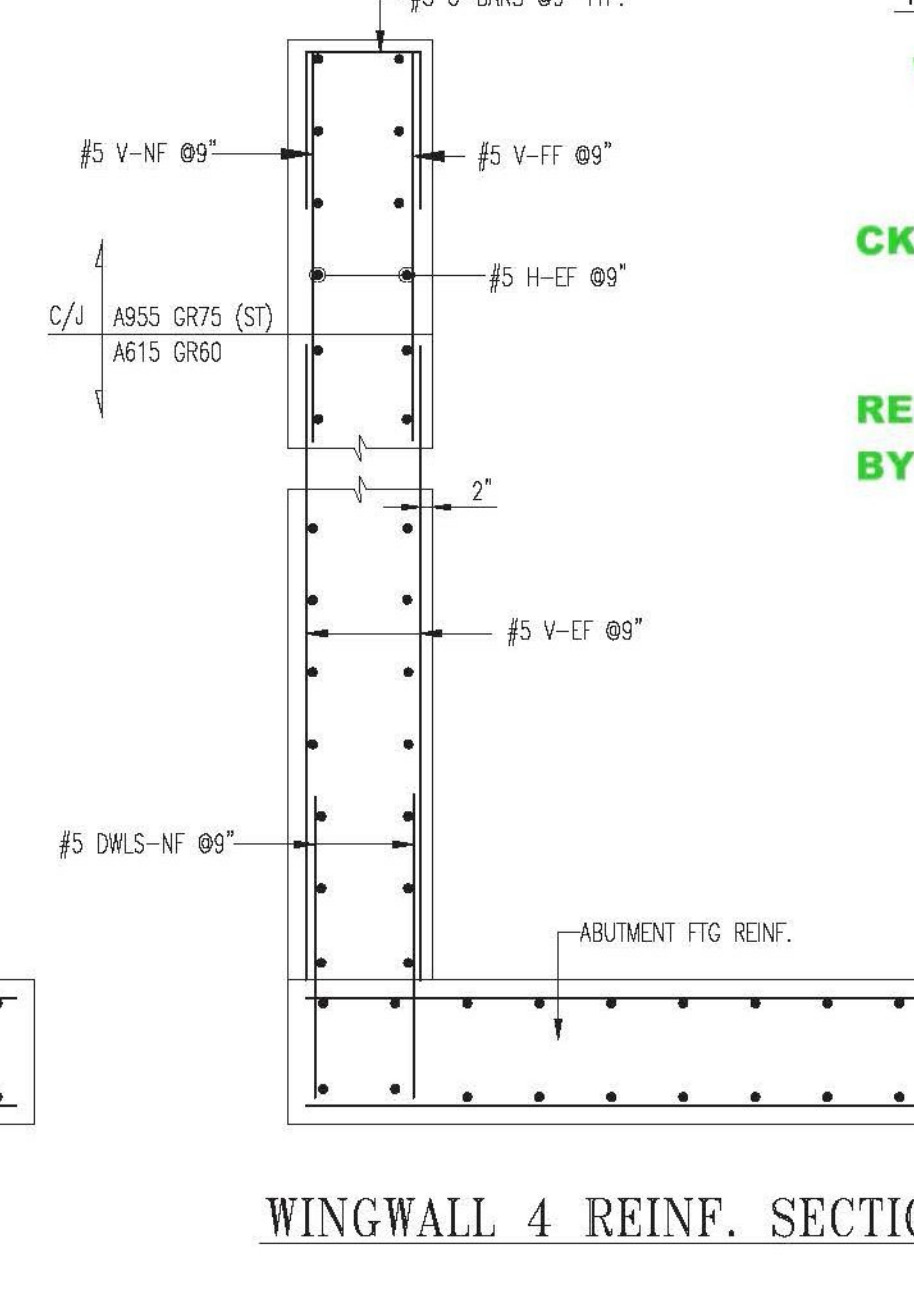
CHEEKWALL @ WW4 SECTION



ABUTMENT WALL REINFORCEMENT SECTION



WINGWALL 3 REINF. SECTION



WINGWALL 4 REINF. SECTION

ALL MATERIAL ON THIS DRAWING SHALL BE AASHTO M31 U.N.O.

LAP CHART-U.N.O.

#	SIZE	TOP BARS	OTHER BARS
#11			
#10			
#9	64"	54"	
#7	41"	41"	
#6	31"	31"	
#4	20"	20"	
#3			

SEE SHEET R065 FOR BAR LISTS 3" CLR COVER U.N.O.

ALL MATERIAL ON THIS DRAWING NOTED AS (75S) SHALL BE ASTM "ASTM A955" STAINLESS STEEL

* -Top bars are horiz. bars with more than 12" of concrete cast below the bars.

Vermont Agency of Transportation
RECEIVED

CK'D BY RK/GL OK'D BY WL

March 9, 2015

RESUBMIT NO Approved
BY KH DATE 3-12-2015

No.	Description	Date	By
2	FINAL APPROVAL PRINT	03/09/15	CPS
1	APPROVAL PRINT	02/13/15	CPS

Revisions and Issue Record

The full intent and purpose of this drawing is the placing of reinforcing steel bars ONLY. It is NOT to be used as a means of communication between the Architect, Engineer, Contractor or any other Sub-trades.

THIS DRAWING IS NOT TO BE SCALED.

HarrisRebar
Barber Steel
National Strength. Local Service.

DETAILED AT:
CANAM
NEW HAMPSHIRE

Project: BRIDGE 43 S REPLACEMENT
I-91 HARTFORD VT

Drawing: I-91 SOUTHBOUND
ABUTMENT 2 W/ WINGWALLS 3&4

Customer: PCL CIVIL CONSTRUCTORS
Engineer: G LAROCHE

Refer to Release:

Date	Drawn	Chkd.	JOB No.	Dwg. No.
02/06/15	CPS		33505535	R02S