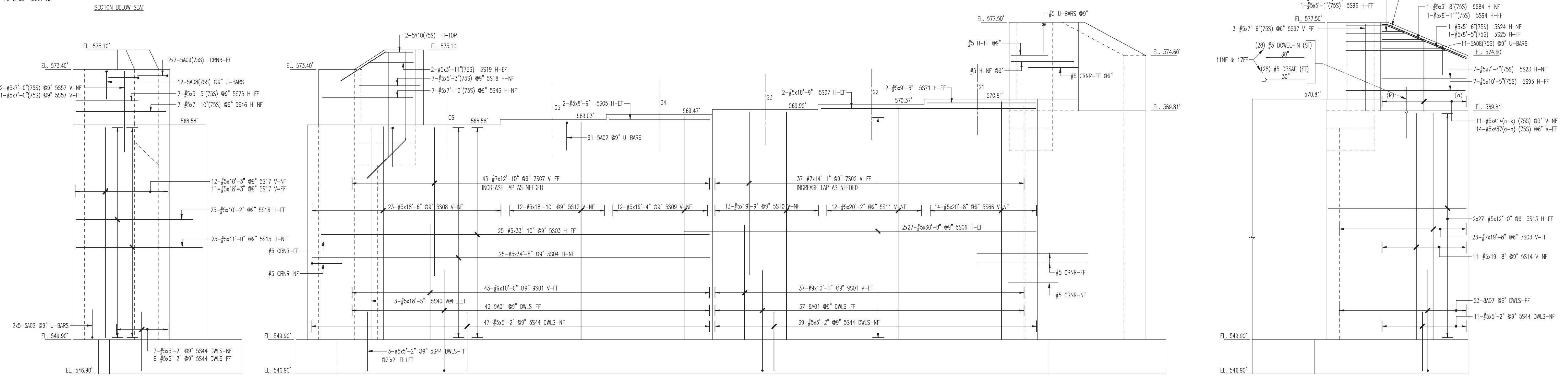
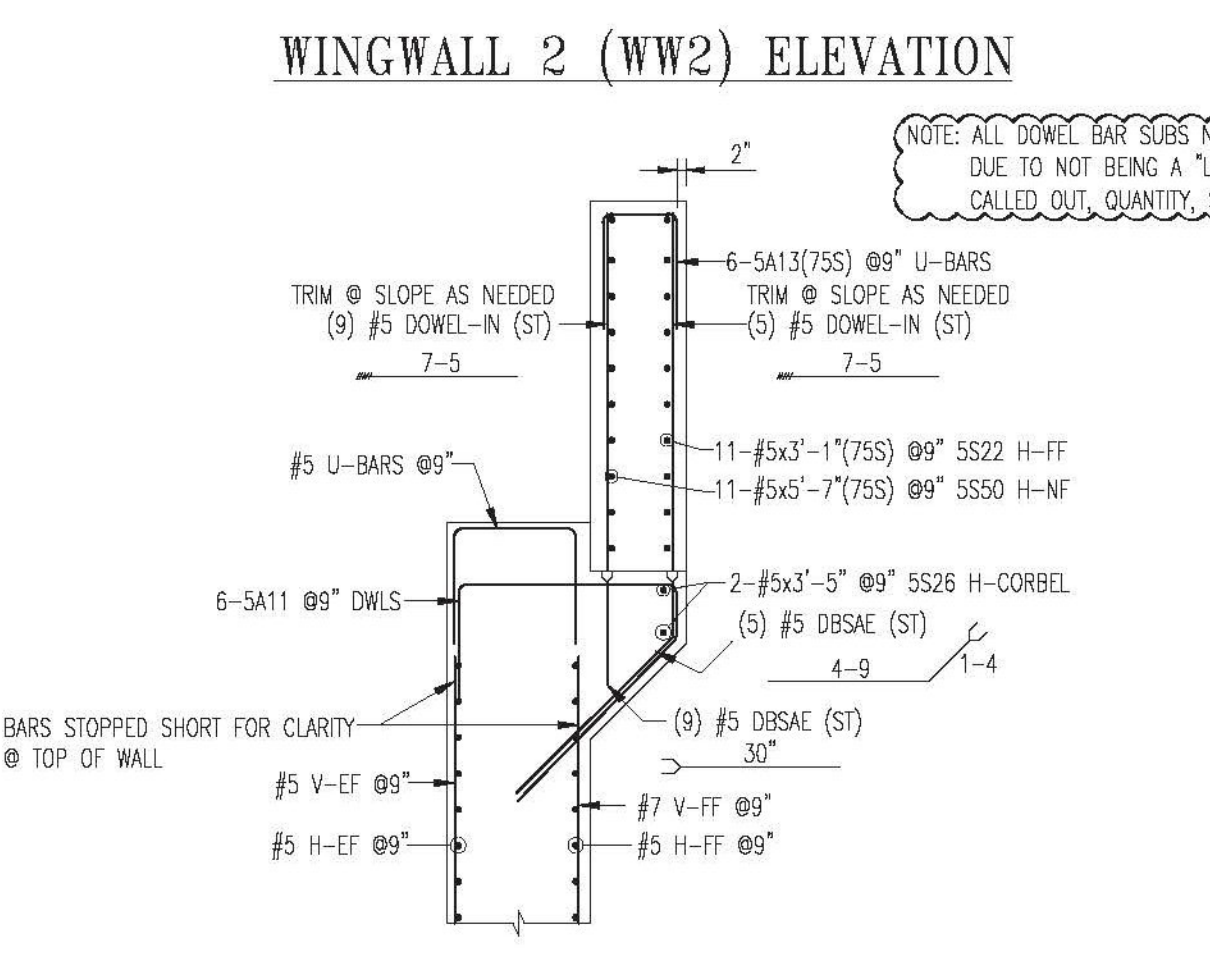


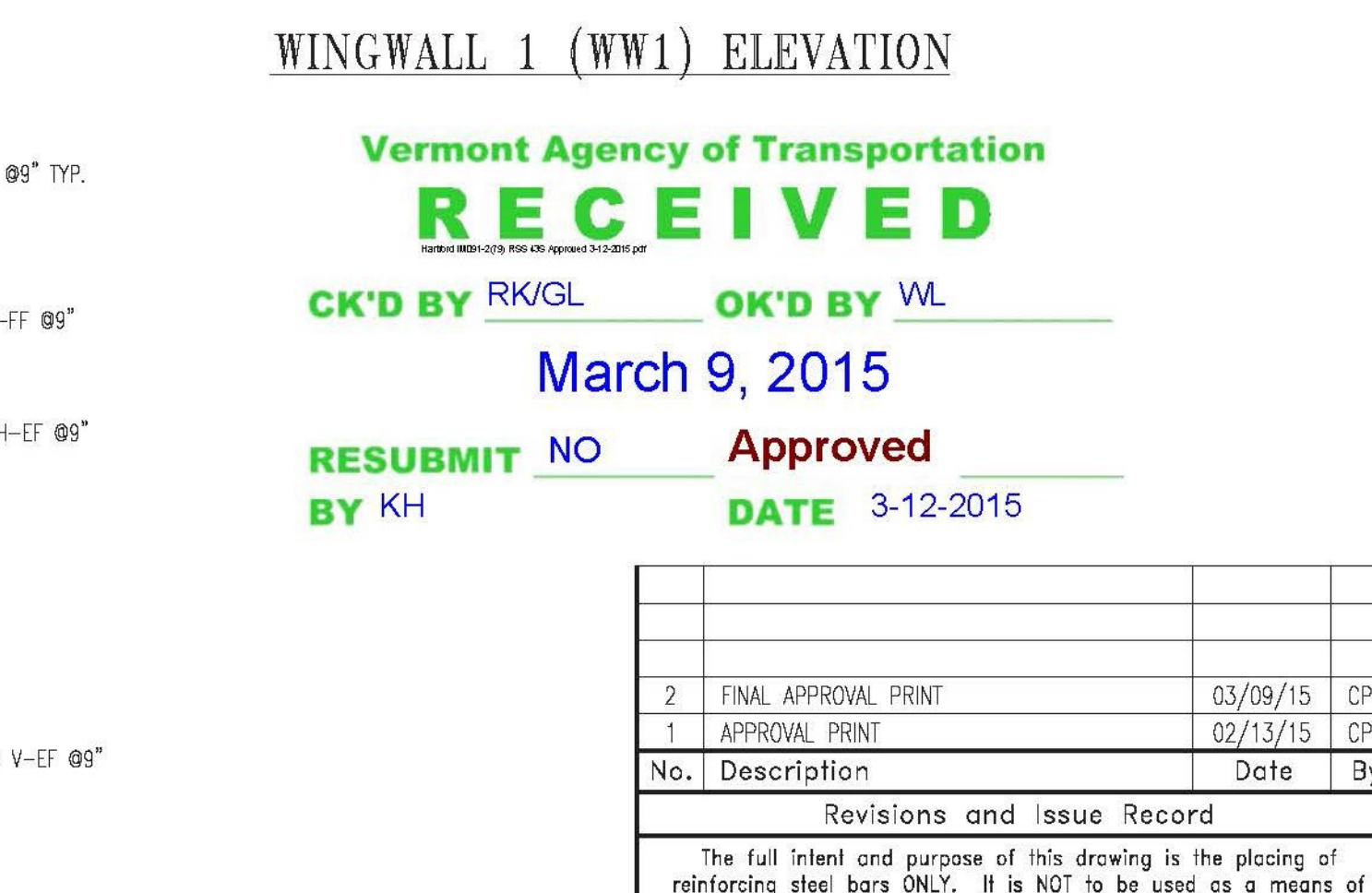
ABUTMENT 1 FOOTING REINFORCEMENT PLAN



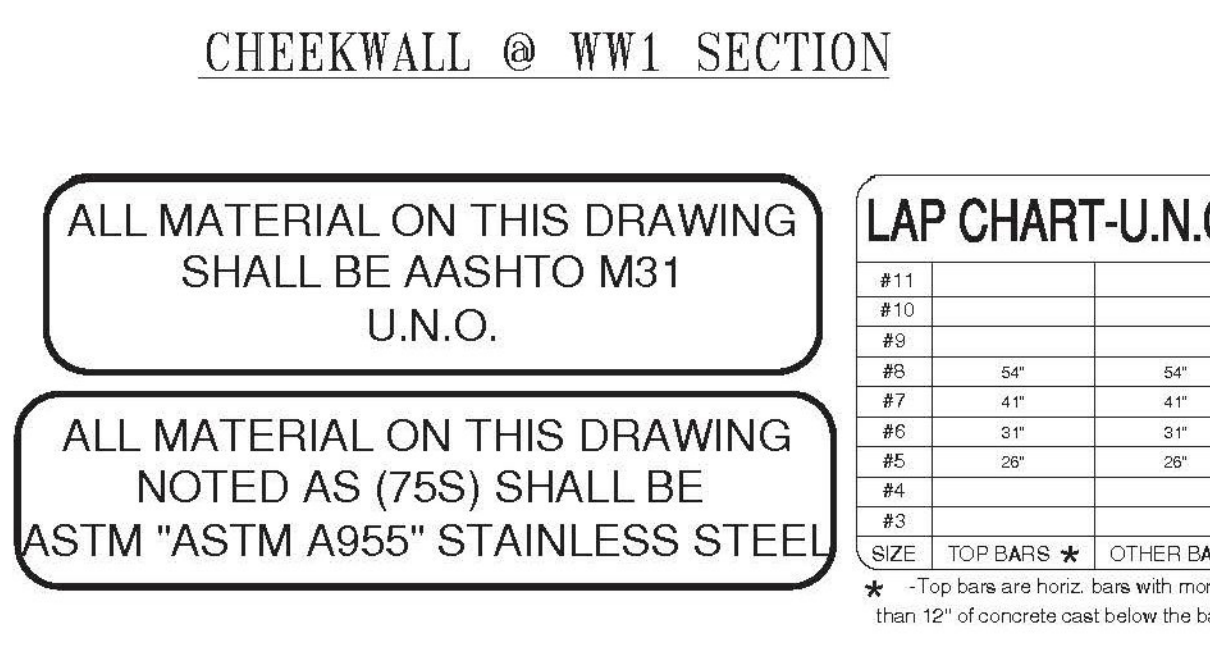
ABUTMENT 1 ELEVATION



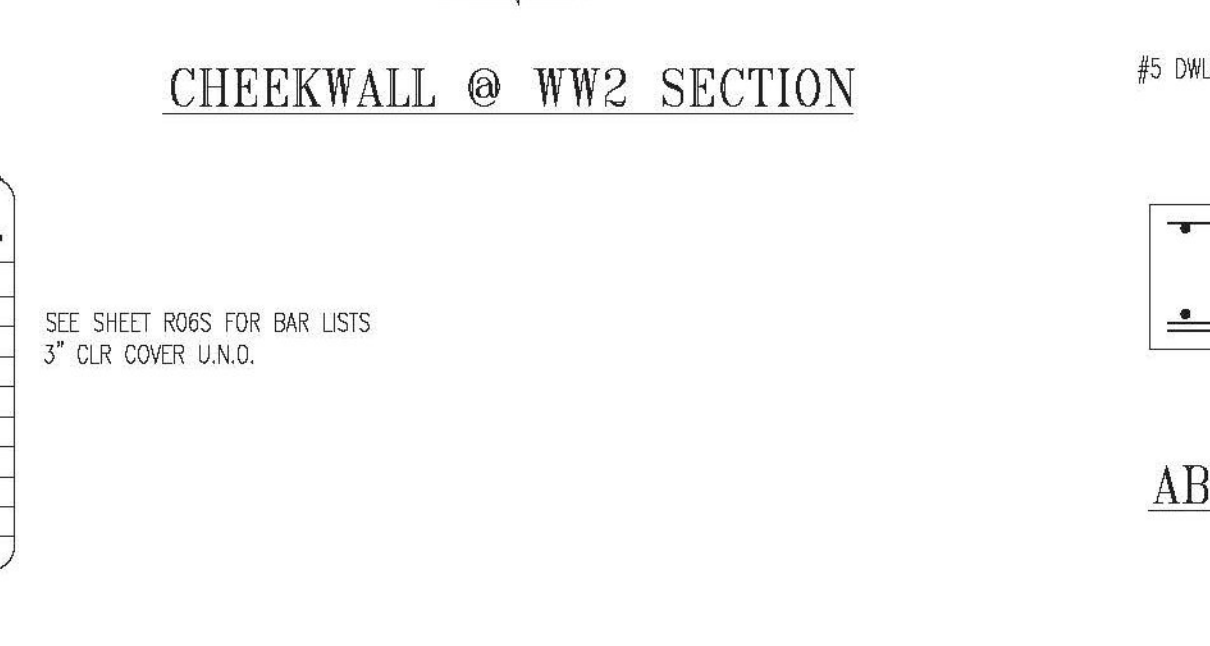
WINGWALL 2 (WW2) ELEVATION



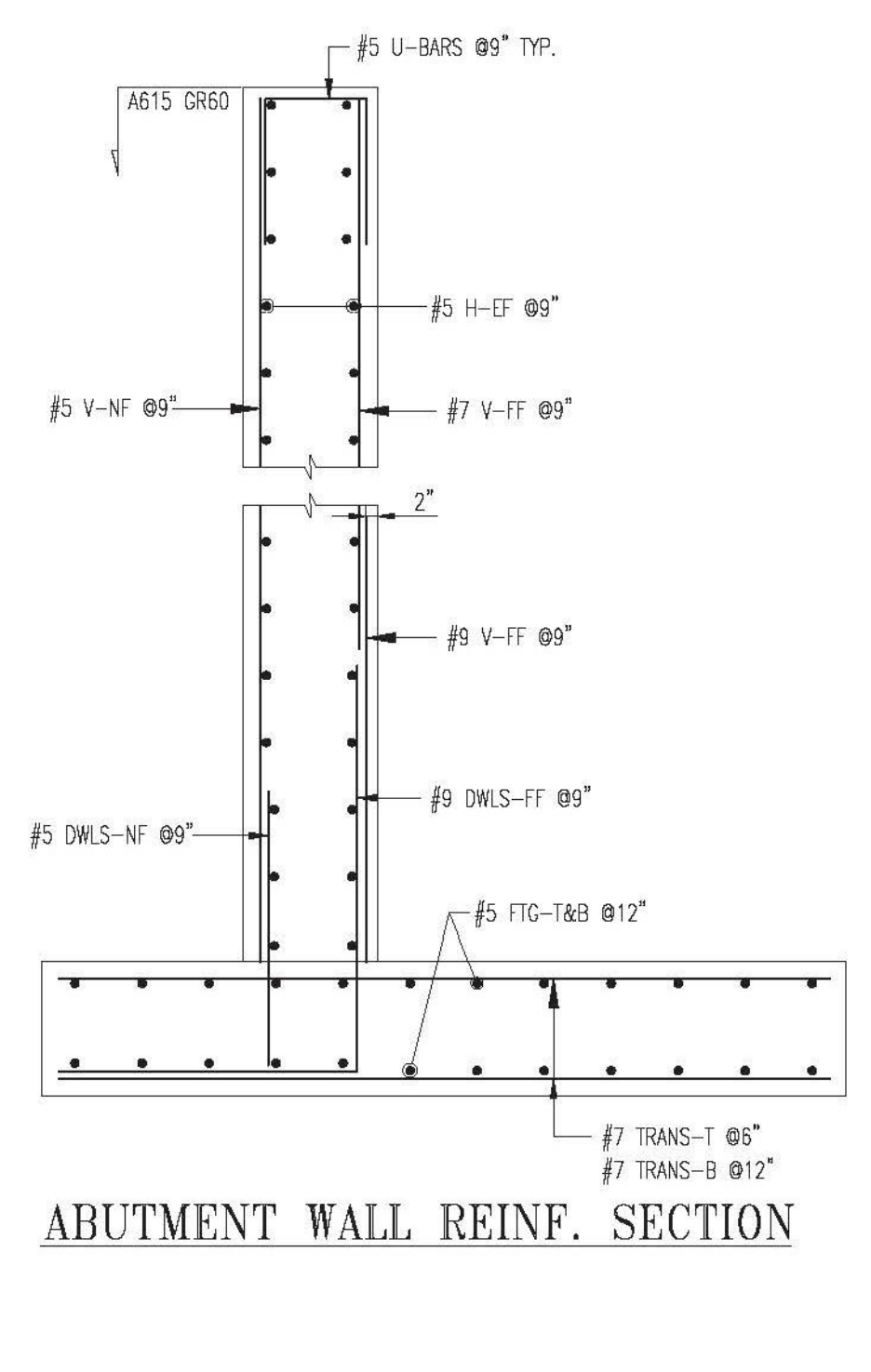
WINGWALL 1 (WW1) ELEVATION



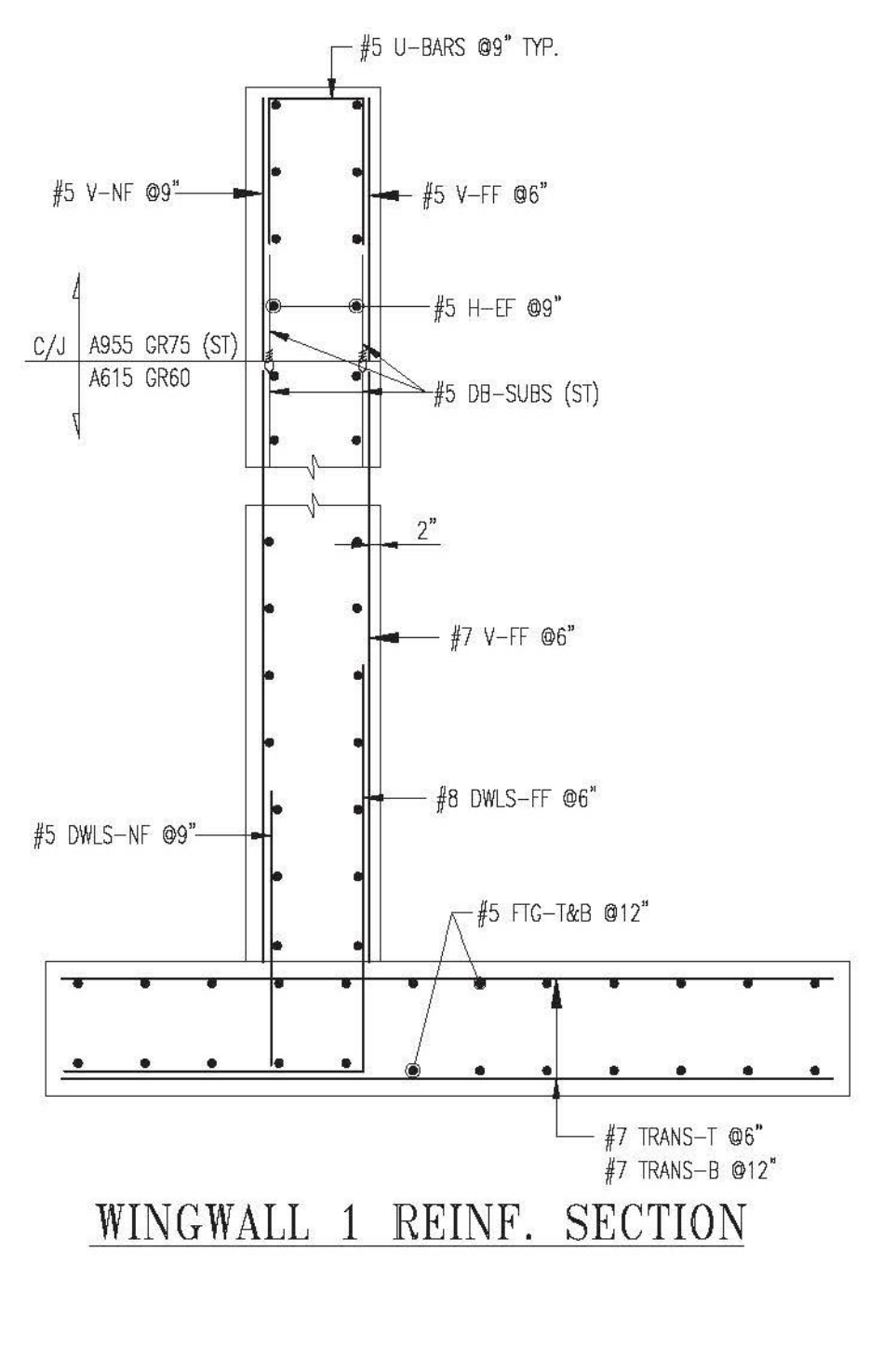
CHEEKWALL @ WW1 SECTION



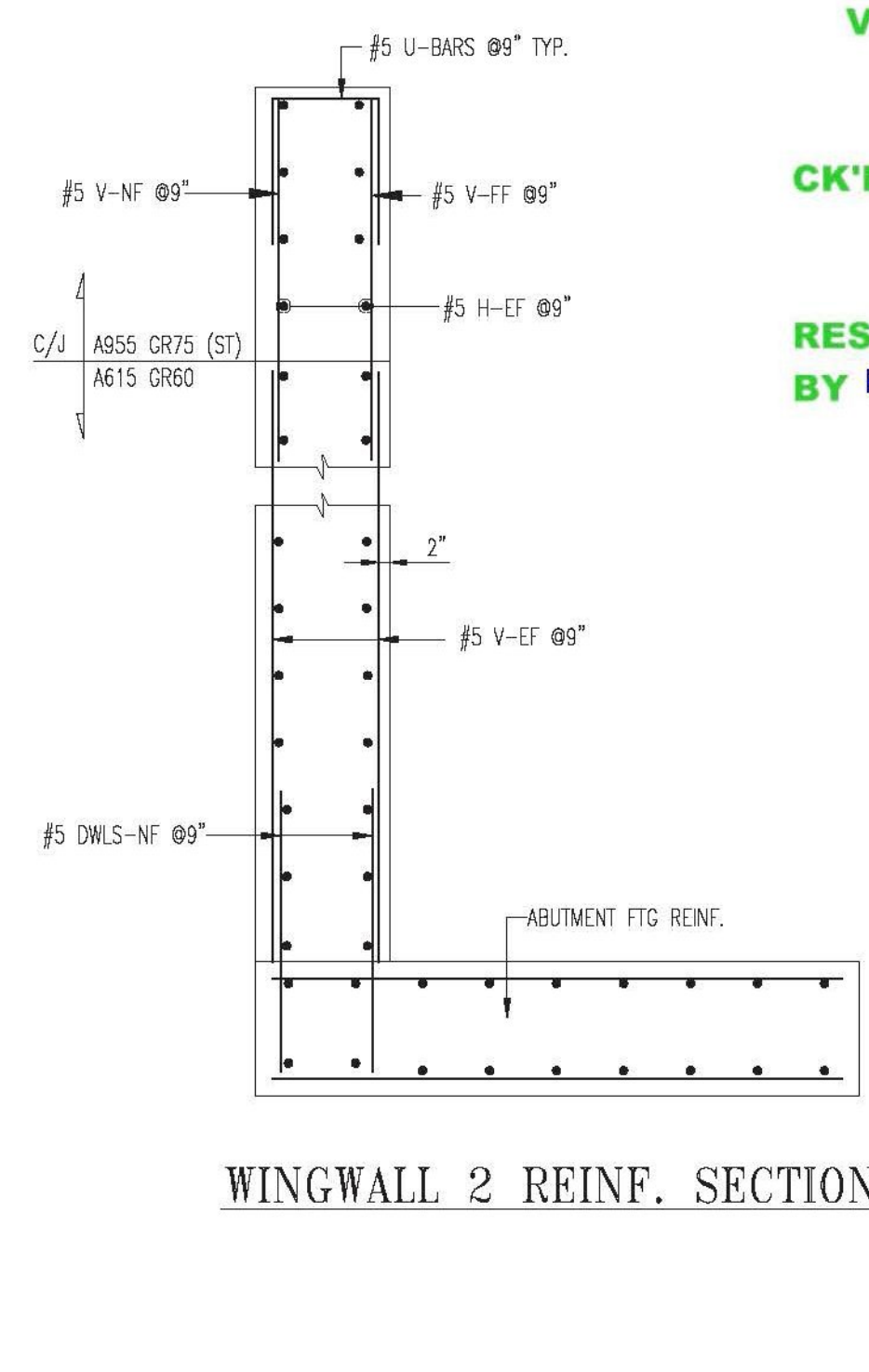
CHEEKWALL @ WW2 SECTION



ABUTMENT WALL REINF. SECTION



WINGWALL 1 REINF. SECTION



WINGWALL 2 REINF. SECTION

NOTE: ALL DOWEL BAR SUBS NOT INCLUDED IN THE BAR SCHEDULES DUE TO NOT BEING A "LIVE BAR" IN REBARCAD--THUS, THEY ARE CALLED OUT, QUANTITY, SIZES AND LENGTHS ON APPROPRIATE ELEVATIONS

LAP CHART-U.N.O.

#11	#10	#9	#8	#7	#6	#5	#4
54"	54"	54"	54"	54"	54"	54"	54"
44"	44"	44"	44"	44"	44"	44"	44"
34"	34"	34"	34"	34"	34"	34"	34"
24"	24"	24"	24"	24"	24"	24"	24"
14"	14"	14"	14"	14"	14"	14"	14"

SIZE: TOP BARS * OTHER BARS
 * Top bars are horiz. bars with more than 12" of concrete cast below the bars.

ALL MATERIAL ON THIS DRAWING SHALL BE AASHTO M31 U.N.O.
 ALL MATERIAL ON THIS DRAWING NOTED AS (75S) SHALL BE ASTM "ASTM A955" STAINLESS STEEL

Vermont Agency of Transportation
RECEIVED
 CK'D BY RK/GL OK'D BY WL
 March 9, 2015
 RESUBMIT NO Approved
 BY KH DATE 3-12-2015

No.	Description	Date	By
2	FINAL APPROVAL PRINT	03/09/15	CPS
1	APPROVAL PRINT	02/13/15	CPS

Revisions and Issue Record

The full intent and purpose of this drawing is the placing of reinforcing steel bars ONLY. It is NOT to be used as a means of communication between the Architect, Engineer, Contractor or any other Sub-trades.

THIS DRAWING IS NOT TO BE SCALED.

HarrisRebar
 National Strength. Local Service.

DETAILED AT:
 CANAAN
 NEW HAMPSHIRE

Project: BRIDGE 43 S REPLACEMENT
 I-91 HARTFORD VT

Drawing: I-91 SOUTHBOND
 ABUTMENT 1 W/ WINGWALLS 1&2

Customer: PCL CIVIL CONSTRUCTORS
 Engineer: G. LAROCHE

Refer to Release:

Date	Drawn	Chkd.	JOB No.	Dwg. No.
02/06/15	CPS		33505535	R01S

W:\sample\Projects\33505535\Placing Drawings\R01S.dwg